



(12) **EUROPEAN PATENT APPLICATION**

(88) Date of publication A3:
25.11.2009 Bulletin 2009/48

(51) Int Cl.:
G09G 3/32^(2006.01)

(43) Date of publication A2:
02.11.2006 Bulletin 2006/44

(21) Application number: **06007905.0**

(22) Date of filing: **13.04.2006**

(84) Designated Contracting States:
AT BE BG CH CY CZ DE DK EE ES FI FR GB GR HU IE IS IT LI LT LU LV MC NL PL PT RO SE SI SK TR
 Designated Extension States:
AL BA HR MK YU

(72) Inventors:
 • **Kim, Woochan**
Gangdong-gu
Seoul (KR)
 • **Yoon, Jong Geun**
Anyang-si
Gyeonggi-do (KR)

(30) Priority: **26.04.2005 KR 20050034752**
05.07.2005 KR 20050060495

(74) Representative: **Viering, Jentschura & Partner**
Postfach 22 14 43
80504 München (DE)

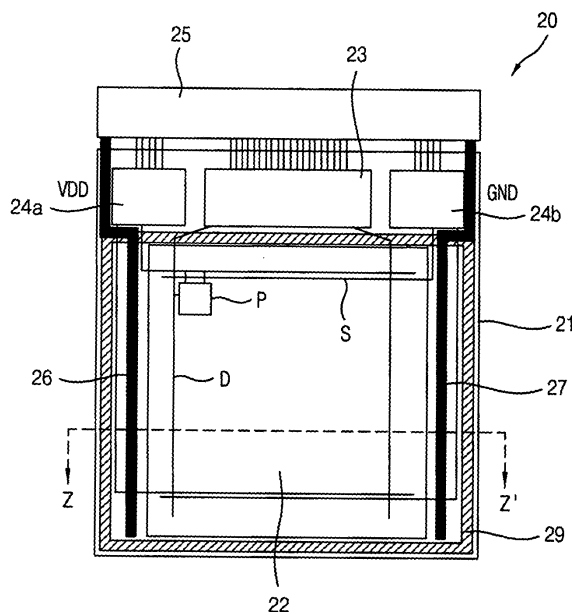
(71) Applicant: **LG Display Co., Ltd.**
Seoul 150-721 (KR)

(54) **Electro luminescence display device**

(57) The present invention provides electro luminescence display devices comprising a pixel circuit comprising a pixel circuit comprising a plurality of pixels on a substrate; a data driver formed on one side of the pixel circuit for supplying a data signal to the plurality of pixels;

at least one scan driver formed on at least one side of the pixel circuit for supplying a scan signal to the plurality of pixels; and a plurality of wirings connected to an outer circuit, wherein at least one of the plurality of wings is formed on a portion of perimeter of one or more of the data driver, the pixel circuit or the substrate.

Fig. 2a





EUROPEAN SEARCH REPORT

Application Number
EP 06 00 7905

DOCUMENTS CONSIDERED TO BE RELEVANT			
Category	Citation of document with indication, where appropriate, of relevant passages	Relevant to claim	CLASSIFICATION OF THE APPLICATION (IPC)
X Y	US 2004/256620 A1 (YAMAZAKI SHUNPEI [JP] ET AL) 23 December 2004 (2004-12-23) * paragraphs [0002], [0041] - [0044]; figures 4A,4B *	1,10-16 2-9	INV. G09G3/32
X Y	US 2003/222589 A1 (OSAME MITSUAKI [JP] ET AL) 4 December 2003 (2003-12-04) * abstract * * paragraphs [0002], [0127] - [0130]; figures 11A,11B *	1,10-16 2-9	
X	EP 1 503 422 A (SAMSUNG SDI CO LTD [KR]) 2 February 2005 (2005-02-02) * abstract * * paragraphs [0003], [0013], [0056] - [0063]; figure 3 *	1,10,11	
X Y	US 2003/030381 A1 (YAMAZAKI SHUNPEI [JP] ET AL) 13 February 2003 (2003-02-13) * paragraphs [0106] - [0111], [0115], [0117] - [0123]; figures 3A,4 *	1-9 2-9	
The present search report has been drawn up for all claims			
Place of search Munich		Date of completion of the search 16 October 2009	Examiner Adarska, Veneta
CATEGORY OF CITED DOCUMENTS X : particularly relevant if taken alone Y : particularly relevant if combined with another document of the same category A : technological background O : non-written disclosure P : intermediate document		T : theory or principle underlying the invention E : earlier patent document, but published on, or after the filing date D : document cited in the application L : document cited for other reasons & : member of the same patent family, corresponding document	

1
EPO FORM 1503 03.02 (P04C01)

ANNEX TO THE EUROPEAN SEARCH REPORT
ON EUROPEAN PATENT APPLICATION NO.

EP 06 00 7905

This annex lists the patent family members relating to the patent documents cited in the above-mentioned European search report. The members are as contained in the European Patent Office EDP file on
The European Patent Office is in no way liable for these particulars which are merely given for the purpose of information.

16-10-2009

Patent document cited in search report	Publication date	Patent family member(s)	Publication date
US 2004256620 A1	23-12-2004	CN 1573846 A	02-02-2005
		US 2008164474 A1	10-07-2008
		US 2007222380 A1	27-09-2007

US 2003222589 A1	04-12-2003	CN 1432984 A	30-07-2003
		TW 280532 B	01-05-2007
		US 2005231122 A1	20-10-2005
		US 2008170005 A1	17-07-2008

EP 1503422 A	02-02-2005	CN 1577413 A	09-02-2005
		JP 2005049808 A	24-02-2005
		KR 20050013874 A	05-02-2005
		US 2005023956 A1	03-02-2005

US 2003030381 A1	13-02-2003	CN 1407373 A	02-04-2003
		JP 2003058075 A	28-02-2003
		KR 20030014598 A	19-02-2003
		TW 546597 B	11-08-2003
