

(19)



(11)

EP 1 531 450 B1

(12)

EUROPEAN PATENT SPECIFICATION

(45) Date of publication and mention of the grant of the patent:
09.01.2013 Bulletin 2013/02

(51) Int Cl.:
G09G 3/32^(2006.01)

(21) Application number: **04090399.9**

(22) Date of filing: **18.10.2004**

(54) Organic electroluminescent display device

Organische elektrolumineszente Anzeigevorrichtung

Dispositif d'affichage électroluminescent organique

(84) Designated Contracting States:
DE FR GB

(30) Priority: **14.11.2003 KR 2003080739**

(43) Date of publication of application:
18.05.2005 Bulletin 2005/20

(73) Proprietor: **Samsung Display Co., Ltd.**
Yongin-City, Gyeonggi-Do, 446-711 (KR)

(72) Inventor: **Kwak, Won-Kyu,**
c/o Samsung SDI Co. Ltd.
Suwon-si,
Gyeonggi-do (KR)

(74) Representative: **Hengelhaupt, Jürgen et al**
Gulde Hengelhaupt Ziebig & Schneider
Patentanwälte - Rechtsanwälte
Wallstrasse 58/59
10179 Berlin (DE)

(56) References cited:
EP-A- 0 762 374 EP-A- 1 361 562
WO-A-03/077231 US-B1- 6 421 033

EP 1 531 450 B1

Note: Within nine months of the publication of the mention of the grant of the European patent in the European Patent Bulletin, any person may give notice to the European Patent Office of opposition to that patent, in accordance with the Implementing Regulations. Notice of opposition shall not be deemed to have been filed until the opposition fee has been paid. (Art. 99(1) European Patent Convention).

Description

CROSS REFERENCE TO RELATED APPLICATIONS

[0001] This application claims priority to and the benefit of Korean Patent Application No. 2003-80739, filed on November 14, 2003 in the Korean Intellectual Property Office.

BACKGROUND OF THE INVENTION

Field of the invention

[0002] The present invention relates to a self-emissive organic display device, and more particularly, to a sequential driving type organic electroluminescent display device in which red, green and blue light emitting elements are time-divisionally driven by one driving element and a driving method of the sequential driving type organic electroluminescent display device.

Description of Related Art

[0003] Liquid crystal display (LCD) device and organic electroluminescent display device are often used in portable information appliances due to their lightweight and thin characteristics. The organic electroluminescent display device is being noticed as the next generation flat panel display device as the organic electroluminescent display device has better luminance and viewing angle characteristics compared to the LCD device.

[0004] Ordinarily, one pixel of an active matrix organic electroluminescent display device includes red, green and blue unit pixels, wherein each red, green and blue unit pixel is equipped with an electroluminescent (EL) device. Red, green and blue organic emitting layers are respectively interposed between anode electrode and cathode electrode in each EL device so that light is emitted from the red, green and blue organic emitting layers by a voltage applied to the anode electrode and cathode electrode.

[0005] FIG. 1 illustrates structure of a conventional active matrix organic electroluminescent display device.

[0006] Referring to FIG. 1, a conventional active matrix organic electroluminescent display device 10 includes a pixel part 100, a gate line driving circuit 110, a data line driving circuit 120 and a control part (not illustrated in FIG. 1). The pixel part 100 includes a plurality of gate lines 111~11m for providing scan signals S1~Sm from the gate line driving circuit 110, a plurality of data lines 121~12n for providing data signals DR1, DG1, DB1~DRn, DGN, DBn from the data line driving circuit 120 and a plurality of power supply lines 131~13n for providing power supply voltage VDD1~VDDn.

[0007] The pixel part 100 includes a plurality of pixels P11~Pmn arranged in a matrix format and connected to the plurality of gate lines 111~11m, the plurality of data lines 121~12n and the plurality of power supply lines

131~13n. Each of the pixels P11~Pmn includes three unit pixels, i.e., corresponding ones of red, green and blue unit pixels PR11~PRmn, PG11~PGmn, PB11~PBmn, so that each of the red, green and blue unit pixels PR11~PRmn, PG11~PGmn, PB11~PBmn is connected to a corresponding one of the gate lines, a corresponding one of the data lines and a corresponding one of the power supply lines.

[0008] For example, a pixel P11 includes a red unit pixel PR11, a green unit pixel PG11 and a blue unit pixel PB11, and is connected to a first gate line 111 for providing a first scan signal S1, a first data line 121 and a first power supply line 131.

[0009] In more detail, the red unit pixel PR11 of the pixel P11 is connected to the first gate line 111, an R data line 121R for providing an R data signal DR1 and an R power supply line 131 R. In addition, the green unit pixel PG11 is connected to the first gate line 111, a G data line 121G for providing G data signal DG1 and a G power supply line 131G. Further, the blue unit pixel PB11 is connected to the first gate line 111, a B data line 121 B for providing a B data signal DB1 and a B power supply line 131 B.

[0010] FIG. 2 illustrates a pixel circuit P11 of a conventional organic electroluminescent display device. In particular, FIG. 2 illustrates a circuit diagram of the pixel P11 of FIG. 1, which includes red, green and blue unit pixels.

[0011] Referring to FIG. 2, the red unit pixel PR11 of the pixel P11 includes a switching transistor M1_R for which the scan signal S1 applied from the first gate line 111 is supplied to a gate, and the data signal DR1 is supplied to a source from the red data line 121R. The red unit pixel PR11 also includes a driving transistor M2_R for which a gate is connected to a drain of the switching transistor M1_R, and a power supply voltage VDD1 is supplied to a source from the power supply line 131R. Further, the red unit pixel PR11 includes a capacitor C1_R connected between the gate and the source of the driving transistor M2_R, and a red EL device EL1_R having an anode connected to a drain of the driving transistor M2_R and a cathode connected to a ground voltage VSS.

[0012] Similarly, the green unit pixel PG11 includes a switching transistor M1_G for which the scan signal S1 applied from the first gate line 111 is supplied to a gate, and the data signal DG1 is supplied to a source from the green data line 121G. The green unit pixel PG11 also includes a driving transistor M2_G for which a gate is connected to a drain of the switching transistor M1_G, and the power supply voltage VDD1 is supplied to a source from the power supply line 131 G. Further, the green unit pixel PG11 includes a capacitor C1_G connected between the gate and the source of the driving transistor M2_G, and a green EL device EL1_G having an anode connected to a drain of the driving transistor M2_G and a cathode connected to a ground voltage VSS.

[0013] Further, the blue unit pixel PB11 includes a switching transistor M1_B for which the scan signal S1

applied from the first gate line 111 is supplied to a gate, and the data signal DB1 is supplied to a source from the blue data line 121 B. The blue unit pixel PB11 also includes a driving transistor M2_B for which a gate is connected to a drain of the switching transistor M1_B, and the power supply voltage VDD1 is supplied to a source from the power supply line 131 B. Further, the blue unit pixel PB11 includes a capacitor C1_B connected between the gate and the source of the driving transistor M2_B, and a blue EL device EL1_B having an anode connected to a drain of the driving transistor M2_B and a cathode connected to a ground voltage VSS.

[0014] In operation of the above described pixel circuit P11, the switching transistors M1_R, M1_G, M1_B of the red, green and blue unit pixels are driven, and red, green and blue data DR1, DG1, DB1 are applied to the gates of the driving transistors M2_R, M2_G, M2_B from the red, green and blue data lines 121R, 121G, 121B, respectively, when the scan signal S1 is applied to the gate line 111.

[0015] The driving transistors M2_R, M2_G, M2_B supply to the EL devices EL1_R, EL1_G, EL1_B a driving current corresponding to the difference between the data signals DR1, DG1, DB1 applied to the gate and the power supply voltage VDD1 respectively supplied from the red, green and blue power supply lines 131R, 131G, 131B. The driving current applied through the driving transistors M2_R, M2_G, M2_B to drive the pixel P11 drives the EL devices EL1_R, EL1_G, EL1_B. The capacitors C1_R, C1_G, C1_B store the data signals DR1, DG1, DB1 applied, respectively, to the red, green and blue data lines 121 R, 121G 121B.

[0016] Operation of a conventional organic electroluminescent display device having the above described structure are described as follows in reference to driving waveform diagrams of FIG. 3.

[0017] First, the first gate line 111 is driven, and pixels P11~P1n connected to the first gate line 111 are driven when the scan signal S1 is applied to the first gate line 111.

[0018] In other words, the switching transistors of red, green and blue unit pixels PR11~PR1n, PG11~PG1n, PB11~PB1n of the pixels P11~P1n connected to the first gate line 111 are driven by the scan signal S1 applied to the first gate line 111. Red, green and blue data signals D(S1)(DR1~DRn, DG1~DGn, DB1~DBn) are simultaneously applied to the gates of the driving transistors of the red, green and blue unit pixels, respectively, through the red, green and blue data lines 121R~12nR, 121G~12nG, 121B~12nB composing first to nth data lines 121~12n according to the driving of the switching transistors.

[0019] The driving transistors of the red, green and blue unit pixels supply a driving current corresponding to the red, green and blue data signals D(S1)(DR1~DRn, DG1~DGn, DB1~DBn) applied to the red, green and blue data lines 121R~12nR, 121G~12nG, 121B~12nB, respectively, to the red, green and blue EL devices. Therefore, the EL devices of the red, green and blue unit pixels

PR11~PR1n, PG11~PG1n, PB11~PB1n of the pixels P11~P1n connected to the first gate line 111 are simultaneously driven when the scan signal S1 is applied to the first gate line 111.

[0020] Similarly, if a scan signal S2 for driving a second gate line 112 is applied, data signals D(S2)(DR1~DRn, DG1~DGn, DB1~DBn) are applied to red, green and blue unit pixels PR21~PR2n, PG21~PG2n, PB21~PB2n of pixels P21~P2n connected to the second gate line 112 through red, green and blue data lines 121R~12nR, 121G~12nG, 121B~12nB composing first to nth data lines 121~12n.

[0021] EL devices of the red, green and blue unit pixels PR21~PR2n, PG21~PG2n, PB21~PB2n of the pixels P21~P2n connected to the second gate line 112 are simultaneously driven by a driving current corresponding to the data signals D(S2)(DR1~DRn, DG1~DGn, DB1~DBn).

[0022] EL devices of red, green and blue unit pixels PRm1~PRmn, PGm1~PGmn, PBm1~PBmn of pixels Pm1~Pmn connected to the mth gate line 11 m are simultaneously driven according to red, green and blue data signals D(Sm)(DR1~DRn, DG1~DGn, DB1~DBn) applied to the red, green and blue data lines 121R~12nR, 121G~12nG, 121B~12nB when a scan signal Sm is finally applied to mth gate line 11m by repeating the foregoing actions.

[0023] Therefore, an image is displayed by sequentially driving pixels (P11~P1n)~(Pm1~Pmn) connected to the respective gate lines 111~11m, thereby driving pixels during one frame when the scan signals S1~Sm are sequentially applied starting with the first gate line 111 and ending with the mth gate line 11 m.

[0024] However, in an organic electroluminescent display device having this structure, each pixel includes red, green and blue unit pixels, and driving elements for driving red, green and blue EL devices(i.e., a switching thin film transistor, driving thin film transistor and a capacitor) are respectively arranged per the red, green and blue unit pixels. Further, data lines and power supply lines for supplying data signal and power supply ELVDD to each driving element are respectively arranged per the unit pixels.

[0025] Therefore, three data lines and three power supply lines are arranged per pixel, and at least six transistors including three switching thin film transistors and three driving thin film transistors and three capacitors are required in each pixel. On the other hand, at least four signal lines are required as a separate emission control line for providing emission control signal is required in case that each pixel is controlled by emission control signals. Therefore, the circuit structure for the pixels in a conventional organic electroluminescent display device is complicated as a plurality of wirings and a plurality of elements are arranged per each pixel, and yield is reduced as probability of generating defects is increased accordingly.

[0026] Further, the area of each pixel is reduced as the

resolution of the display device is being increased, and not only is it difficult to arrange many elements on one pixel, but also the aperture ratio is reduced accordingly. [0027] Sequential driving type electroluminescent display devices are also known from EP-A-0 762 374 and US-B-6,421,033.

SUMMARY OF THE INVENTION

[0028] Therefore, in order to solve the foregoing problems associated with the conventional organic electroluminescent display devices, in one exemplary embodiment of the present invention, a pixel circuit of an organic electroluminescent display device appropriate for high accuracy fineness is provided as recited in the appended claims.

BRIEF DESCRIPTION OF THE DRAWINGS

[0029] The above and other features of the present invention will become more apparent to those of ordinary skill in the art with the following description in detail of certain exemplary embodiments thereof with reference to the attached drawings in which:

FIG. 1 is a structural view of a conventional organic electroluminescent display device;

FIG. 2 is a circuit diagram of a pixel circuit of the organic electroluminescent display device of FIG. 1; FIG. 3 is a waveform diagram of operation of the organic electroluminescent display device of FIG. 1; FIG. 4 is a block structural view of an organic electroluminescent display device according to a first exemplary embodiment of the present invention;

FIG. 5A illustrates a block structural view of a pixel part applicable to the organic electroluminescent display device of FIG. 4;

FIG. 5B illustrates a block structural view of another pixel part applicable to the organic electroluminescent display device of FIG. 4;

FIG. 6 is a drawing schematically illustrating a pixel circuit of an organic electroluminescent display device according to the first exemplary embodiment of the present invention;

FIG. 7A is a block structural view of a pixel circuit of the pixel part of FIG. 5A;

FIG. 7B is a block structural view of a pixel circuit of the pixel part of FIG. 5B;

FIG. 8A is a detailed circuit diagram of the pixel circuit of FIG. 7A;

FIG. 8B is a detailed circuit diagram of the pixel circuit of FIG. 7B;

FIG. 9 is a driving waveform diagram of a pixel circuit of an organic electroluminescent display device according to the first exemplary embodiment of the present invention;

FIG. 10 is a driving waveform diagram illustrating white balance control in an organic electrolumines-

cent display device according to the first exemplary embodiment of the present invention;

FIG. 11 is a block structural view of an organic electroluminescent display device according to a second exemplary embodiment of the present invention; and FIG. 12 is a block structural view of an organic electroluminescent display device according to a third exemplary embodiment of the present invention.

DETAILED DESCRIPTION

[0030] The present invention will now be described in detail in connection with certain exemplary embodiments with reference to the accompanying drawings. In the drawings, like reference numerals/characters designate like elements.

[0031] FIG. 4 illustrates a block structural view of an organic electroluminescent display device according to a first exemplary embodiment of the present invention.

[0032] Referring to FIG. 4, an organic electroluminescent display device 50 according to the first exemplary embodiment includes a pixel part 500, a gate line driving circuit 510, a data line driving circuit 520 and an emission control signal generating circuit 590. The gate line driving circuit 510 sequentially generates scan signals S1'-Sm' to gate lines of the pixel part 500 during one frame. The data line driving circuit 520 sequentially supplies red, green and blue data signals D1'-Dn' to data lines of the pixel part 500 whenever scan signals are applied during one frame. The emission control signal generating circuit 590 sequentially supplies emission control signals EC_11, 21 - EC_1m, 2m for controlling emission of red, green and blue EL devices to emission control lines 591-59m of the pixel part 500 whenever scan signals are applied during one frame. In this and other embodiments, the EL devices may be arranged in stripe type, delta type or mosaic type. Further, at least one of the gate line driving circuit 510, the data line driving circuit 520 and the emission control generating circuit may have a redundancy function.

[0033] FIG. 5A illustrates one example of block structure of pixel part in an organic electroluminescent display device according to the first exemplary embodiment of the present invention.

[0034] Referring to FIG. 5A, a pixel part 500' of an organic electroluminescent display device 50' includes a plurality of gate lines 511-51m to which scan signals S1'~Sm' are supplied from a gate line driving circuit 510, a plurality of data lines 521-52n to which data signals D1'~Dn' are supplied from a data line driving circuit 520. The pixel part 500' also includes a plurality of emission control lines 591-59m to which emission control signals EC_11, 21 - EC_1 m, 2m are supplied from an emission control signal generating circuit 590, and a plurality of power supply lines 531-53n for supplying power supply voltage VDD1-VDDn.

[0035] The pixel part 500' further includes a plurality of pixels P11'-Pmn' arranged in a matrix format, and con-

nected to the plurality of gate lines 511-51m, the plurality of data lines 521-52n, the plurality of emission control lines 591-59m and the plurality of power supply lines 531-53n. Each of the plurality of pixels P11'-Pmn' is connected to one corresponding gate line in the plurality of gate lines 511-51m, one corresponding data line in the plurality of data lines 521-52n, one corresponding emission control line in the plurality of emission control lines 591-59m and one corresponding power supply line in the plurality of power supply lines 531-53n.

[0036] For example, the pixel P11' is connected to the first gate line 511 for supplying the first scan signal S1', the first data line 521 for supplying the first data signal D1', the first emission control line 591 for supplying the first emission control signal EC_11, 21, and the first power supply line 531 for supplying the first power supply voltage VDD1.

[0037] Therefore, corresponding scan signals are applied to the pixels P11'~Pmn' through corresponding scan lines, and the corresponding red, green and blue data signals are sequentially supplied to the pixels P11'~Pmn' through corresponding data lines. Further, corresponding emission control signals are sequentially supplied to the pixels P11'~Pmn' through corresponding emission control lines, and corresponding power supply voltage is supplied to the pixels P11'~Pmn' through corresponding power supply lines. Each of the pixels indicates a certain color, such that an image is displayed during one frame by sequentially applying corresponding red, green and blue data signals to the pixels whenever corresponding scan signals are applied to the pixels and sequentially driving red, green and blue EL devices according to emission control signals, thereby sequentially emitting lights corresponding to the red, green and blue data signals.

[0038] FIG. 6 schematically illustrates a pixel circuit for one pixel in a time-divisional driving type organic electroluminescent display device according to the first exemplary embodiment of the present invention. FIG. 6 illustrates one pixel P11' in a plurality of pixels.

[0039] Referring to FIG. 6, the pixel includes an active element 570 connected to the first gate line 511, the first data line 521, the first emission control line 591 and the first common power supply line 531, and red, green and blue EL devices EL1_R', EL1_G', EL1_B' connected in parallel between the active element 570 and a common voltage (e.g., ground) VSS. First electrodes, e.g., anode electrodes, are connected to the active element 570, and second electrodes, e.g., cathode electrodes, are commonly connected to the common voltage VSS in the red, green and blue EL devices EL1_R', EL1_G', EL1_B'.

[0040] The red, green and blue EL devices EL1_R', EL1_G', EL1_B' should be time-divisionally driven so that a pixel P11' displays a certain color by driving the three red, green and blue EL devices EL1_R', EL1_G', EL1_B' during one frame since the red, green and blue EL devices EL1_R', EL1_G', EL1_B' share one active element 570 in a pixel circuit having the structure of FIG. 6. That

is, the red, green and blue EL devices EL1_R', EL1_G', EL1_B' are sequentially driven time-divisionally during one frame so that the pixel P11' realizes a certain color by dividing one frame into three sub frames and driving one of the red, green and blue EL devices EL1_R', EL1_G', EL1_B' during each sub frame.

[0041] In other words, the active element 570 drives the red EL device EL1_R' using the emission control signals EC_11, EC_21 generated to the emission control line 591 from the emission control signal generating circuit 590 so that red color corresponding to red data is emitted if red data DR1' is applied as a data D1' applied to the data line 521 as the scan signal S1' is applied from the gate line 511 to the active element 570 in the first sub frame of one frame. Similarly, when the scan signal S1' is applied from the gate line 511 to the active element 570 in the second sub frame, green data DG1' is applied as the data D1' applied to the data line 521, and the green EL device EL1_G' is emitted by the emission control signals EC_11, EC_21 generated to the emission control line 591 from the emission control signal generating circuit 590 so that green color corresponding to the green data is emitted. Finally, when the scan signal S1' is applied from the gate line 511 to the active element 570 in the third sub frame, blue data DB1' is applied as the data D1' applied to the data line 521, and the blue EL device EL1_B' is emitted by the emission control signals EC_11, EC_21 generated to the emission control line 591 from the emission control signal generating circuit 590 so that blue color corresponding to the blue data is emitted. Therefore, red, green and blue EL devices are sequentially driven time-divisionally during one frame so that each pixel emits a certain color to display an image.

[0042] Although red, green and blue colors are emitted to realize a certain color in each pixel by driving the EL devices in the order of red, green and blue EL devices during the three sub frames of one frame in the first exemplary embodiment of the present invention, emission sequence of red, green and blue EL devices or red, green, blue and white EL devices may be temporarily or permanently changed, and/or one frame may be divided into more than three sub frames so that at least one color out of red, green and blue colors is further emitted in the remaining sub frame(s) in order to adjust chromaticity, brightness or luminance.

[0043] For example, one color of red, green, blue or white can be further emitted during an additional one sub frame such as RRGB, RGGB, RGBB and RGBW by dividing one frame into four sub frames, and the additional emitted color is emitted from an appropriate sub frame in a plurality of sub frames, wherein one EL device in the red, green, blue and white EL devices is driven, or at least two EL devices in the red, green, blue and white EL devices are driven so that one color of red, green, blue or white is further emitted during the additional one or more sub frames.

[0044] Further, although the first exemplary embodiment of the present invention discloses that red, green

and blue EL devices are sequentially driven during one frame of three sub frames, the plurality of sub frames are sequentially driven time-divisionally by dividing red, green, blue or white into a plurality of sub frames during one frame, or the plurality of sub frames are sequentially driven time-divisionally by dividing at least two colors in the red, green, blue and white into a plurality of sub frames during one frame.

[0045] FIG. 7A illustrates a block structural view of a pixel circuit of time-divisional driving type organic electroluminescent display device according to one exemplary embodiment of the present invention, and FIG. 8A illustrates one example of detailed circuit diagram of the pixel circuit of FIG. 7A. Pixel circuits of FIG. 7A and FIG. 8A illustrate examples of pixel circuit for sequentially driving red, green and blue EL devices EL1_R', EL1_G', EL1_B' time-sharingly during one frame.

[0046] Referring to FIG. 7A and FIG. 8A, the pixel P11' includes one gate line 511, one data line 521, two emission control lines 591 a, 591 b, the power supply line 531, and an indication unit 560 time-divisionally driven by signals applied through the lines. The indication unit 560 includes a light emitting element for self-emitting light. The light emitting element includes red, green and blue EL devices EL1_R', EL1_G', EL1_B' for emitting red, green and blue respectively.

[0047] Further, the pixel P11' includes the active element 570 for sequentially driving the red, green and blue EL devices EL1_R', EL1_G', EL1_B' time-divisionally. The active element 570 includes a driving unit 540 for supplying driving current corresponding to red, green and blue data signals DR1', DG1', DB1' to the EL devices EL1_R', EL1_G', EL1_B' of the indication unit 560 whenever the scan signal S1' is applied, and a sequential control unit 550 for controlling the driving current corresponding to the red, green and blue data signals DR1', DG1', DB1'. The data signals are sequentially supplied to the red, green and blue EL devices EL1_R', EL1_G', EL1_B' from the driving unit 540 according to the emission control signals EC_11, EC_21.

[0048] As shown in FIG. 8A, the driving unit 540 includes a switching transistor M51 in which the scan signal S1' is supplied to a gate from the gate line 511, and red, green and blue data signals DR1', DG1', DB1' are time-divisionally supplied to a source from the data line 521. The driving unit 540 also includes a driving transistor M52 having a gate connected to a drain of the switching transistor M51. A power supply voltage VDD1 is supplied to a source from the power supply voltage line 531, and a drain is connected to the sequential control unit 550. A capacitor C51 is connected between a gate and a source of the driving transistor M52.

[0049] Although the driving unit 540 includes two thin film transistors of switching transistor and driving transistor and one capacitor in the described exemplary embodiment of the present invention, any suitable structure capable of driving light emitting element including the indication unit 560 may be used. Further, the driving unit

540 of FIG. 7A may also include any device capable of improving driving characteristics for driving the light emitting element of the indication unit 560, e.g., a threshold compensation device. Although all thin film transistors in the driving unit 540 are P type thin film transistors, the thin film transistors can be N type thin film transistors or any combination of N type thin film transistors and P type thin film transistors. In addition, N type or P type thin film transistor of depletion mode or enhancement mode may be used. Further, the driving unit 540 may be constructed using various types of switching elements such as thin film diode, diode, TRS (triodic rectifier switch), etc. instead of or in addition to the thin film transistors.

[0050] The sequential control unit 550 is connected between the driving unit 540 and the indication unit 560 to time-divisionally drive red, green and blue EL devices EL1_R', EL1_G', EL1_B' of the indication unit 560 according to the first and second emission control signals EC_11, EC_21 supplied through the emission control lines 591a, 591 b from the emission control signal generating circuit 590.

[0051] The sequential control unit 550 includes first, second and third control devices connected between the drain of the driving transistor M52 and anodes of the red, green and blue EL devices EL1_R', EL1_G', EL1_B' respectively, to time-divisionally control driving of the red, green and blue EL devices EL1_R', EL1_G', EL1_B' according to the emission control signals EC_11, EC_21.

[0052] In exemplary embodiments of the present invention, the sequential control unit 550 time-divisionally controls the red, green and blue EL devices EL1_R', EL1_G', EL1_B' using two emission control signals EC_11, EC_21 only. The first emission control signal EC_11 is commonly applied to gates of first thin film transistors M55_R1, M55_G1, M55_B1 of the first, second and third control devices, respectively, and the second emission control signal EC_21 is commonly applied to gates of second thin film transistors M55_R2, M55_G2, M55_B2 of the first, second and third control devices, respectively.

[0053] In more detail, the first control device includes the P type thin film transistor M55_R1 and the N type thin film transistor M55_R2 for which the first and second emission control signals EC_11, EC_21 are respectively applied to the gates. Sources of the thin film transistors M55_R1 and M55_R2 are connected to the drain of the driving transistor M52 and an anode of the red EL device EL1_R', respectively. Further, drains of the thin film transistors M55_R1 and M55_R2 are connected to each other. This way, the first control device is configured to drive the red EL device EL1_R' correspondingly to the red data signal applied through the driving transistor M52, in response to the first emission control signal EC_11 and the second emission control signal EC_21.

[0054] The second control device includes the N type thin film transistor M55_G1 and the P type thin film transistor M55_G2 for which the first and second emission control signals EC_11, EC_21 are respectively applied to the gates. Drains of the thin film transistors M55_G1

and M55_G2 are connected to the drain of the driving transistor M52 and an anode of the green EL device EL1_G' respectively. Further, sources of the thin film transistors M55_G1 and M55_G2 are connected to each other. This way, the second control device is configured to drive the green EL device EL1_G' correspondingly to the green data signal applied through the driving transistor M52, in response to the first emission control signal EC_11 and the second emission control signal EC_21.

[0055] The third control device includes the N type thin film transistor M55_B1 and the N type thin film transistor M55_B2 for which the first and second emission control signals EC_11, EC_21 are respectively applied to the gates. A drain of the thin film transistor M55_B1 is connected to the drain of the driving transistor M52, and a source of the thin film transistor M55_B2 is connected to an anode of the blue EL device EL1_B'. Further a source of the thin film transistor M55_B1 is connected to a drain of the thin film transistor M55_B2. This way, the third control device is configured to drive the blue EL device EL1_B' correspondingly to the blue data signal applied through the driving transistor M52, in response to the first emission control signal EC_11 and the second emission control signal EC_21.

[0056] Although the sequential control unit 550 includes N type and P type thin film transistors in the described embodiment, the sequential control unit 550 can be formed of N type thin film transistors, P type thin film transistors, or any suitable combination of N type thin film transistors and P type thin film transistors in other embodiments, in which N type or P type thin film transistors may operate in depletion mode or enhancement mode. Further, the sequential control device 550 can be constructed by using various types of switching elements such as a thin film diode, a diode, a TRS, etc. instead of or in addition to the thin film transistors. The sequential control unit 550 can be constructed as any suitable device capable of sequentially driving the red, green and blue EL devices.

[0057] Although in the described exemplary embodiment of the present invention, red, green and blue EL devices are used as red, green and blue light emitting elements driven using one active element, a structure in which red, green and blue light emitting elements are driven using one active element can also be applied to other light emitting display devices such as FED (field emission display) and PDP (plasma display panel).

[0058] The process of time-divisionally driving a pixel circuit of an organic electroluminescent display device in exemplary embodiments of the present invention is described as follows.

[0059] Conventionally, each one of scan signals S1-Sm is sequentially applied to a plurality of gate lines from the gate line driving circuit 110 so that m scan signals are applied during one frame, and red, green and blue data signals DR1-DRn, DG1-DGn, DB1-DBn are simultaneously applied to red, green and blue data lines from the data line driving circuit 120 whenever the respective

scan signals S1-Sm are applied so that pixels are driven as illustrated in FIG. 3.

[0060] In the described exemplary embodiments of the present invention, however, one frame is divided into three sub frames, scan signals are respectively applied to gate lines from the gate line driving circuit 510 during each sub frame so that 3m scan signals are applied during one frame. In the case of the first pixel, when the scan signal S1' is applied to the first gate line 511 during the first sub frame, the switching transistor M51 is turned on so that the red data signal DR1' is supplied to driving transistor M52 from the data line 521, wherein the sequential control unit 550 drives the red EL device EL1_R' correspondingly to the red data signal DR1' as thin film transistors M55_R1, M55_R2 (i.e., the first control device) are turned on in response to the first emission control signal EC_11 and the second emission control signal EC_21, respectively.

[0061] Next, the sequential control unit 550 drives the green EL device EL1_G' correspondingly to the green data signal DG1' as the scan signal S1' is applied to the first gate line 511 during the second sub frame so that the green data signal DG1' is supplied to the driving transistor M52 from the data line 521, and the thin film transistors M55_G1, M55_G2 (i.e., the second control device) are turned on by the first and second emission control signals EC_11, EC_21.

[0062] Finally, the sequential control unit 550 drives the blue EL device EL1_B' correspondingly to the blue data signal DB1' as the scan signal S1' is applied to the first gate line 511 during the third sub frame so that the blue data signal DB1' is supplied to the driving transistor M52 from the data line 521, and the thin film transistors M55_B1, M55_B2 (i.e., the third control device) are turned on by the first and second emission control signals EC_11, EC_21, respectively.

[0063] In this manner, the red data signals DR1'-DRn', the green data signals DG1'-DGn' and the blue data signals DB1'-DBn' are sequentially applied to the data lines so that red, green and blue EL devices EL_R', EL_G', EL_B' of pixels P11'-Pmn' are sequentially driven time-divisionally whenever the scan signals S1'-Sm' are applied during the respective sub frames during one frame.

[0064] Therefore, circuit structure can be simplified in a pixel circuit of the present invention as the red, green and blue EL devices EL_R', EL_G', EL_B' of the pixel P11' share an active element 570 so that each pixel requires one gate line, one data line, and one power supply line only. Further, each of the pixels requires two emission control lines only so that wiring of the pixel circuit is more simplified, and the emission of red, green and blue EL devices is more simply controlled.

[0065] FIG. 5B illustrates another block structure of a pixel part 500" in an organic electroluminescent display device 50" according to the first exemplary embodiment of the present invention. FIG. 7B illustrates another block structural view of a pixel circuit P11" of a time-divisional driving type organic electroluminescent display device of

the present invention illustrated in FIG. 5B, and FIG. 8B illustrates a detailed circuit diagram of the pixel circuit P11" of FIG. 7b.

[0066] The Pixel circuit P11" illustrated in FIG. 5B, FIG. 7B and FIG. 8B is substantially the same as the pixel circuit P11' of FIG. 5A, FIG. 7A and FIG. 8A except that a separate power supply line is installed so that a power supply voltage VDD1 is supplied to a capacitor C51' of a driving unit 540' in an active element 570', through a power supply line 531 b, and the power supply voltage VDD1 is supplied to a source of a driving transistor M52' through a power supply line 531 a. This is different from the pixel circuit P11' wherein the same power supply voltage VDD1 is supplied to the capacitor C51 of the driving unit 540 and the source of the driving transistor M52 through the same power supply line 531. Hence, in the pixel circuit P11", data signals are stored in the capacitor C51' more stably by separating power supply line supplied to the capacitor C51' from the power supply line supplied to the driving transistor M52'. In the pixel circuit P11", a driving transistor M51' is coupled in substantially the same manner as the driving transistor M51 is in the pixel circuit P11'.

[0067] A method for time-divisionally and sequentially driving an organic electroluminescent display device according to the first exemplary embodiment of the present invention as described above is described in detail as follows in references to the driving waveform diagram of FIG. 9. The description will be made in reference to the illustrated embodiment of FIGs. 5A, 7A and 8A with the understanding that the description applies equally as well to the illustrated embodiment of FIGs. 5B, 7B and 8B.

[0068] First, when a scan signal S1'(R) is applied to the first gate line 511 from the gate line driving circuit 510 during a first sub frame 1SF_R in a first frame 1F, the first gate line 511 is driven, and red data signals DR1'-DRn' are supplied as the data signals D1'-Dn' to the driving transistor of the pixels P11'~P1n' connected to the first gate line 511 from the data line driving circuit 520'.

[0069] When the first and second emission control signals EC_11, EC_21 from the emission control signal generating circuit 590 in low and high states, respectively, for controlling the red EL device EL_R' of the pixels P11'~P1n' connected to the first gate line 511, are applied to the sequential control unit 550 through the emission control lines 591 a, 591 b, the thin film transistors M55_R1 and M55_R2 are turned on, and driving current corresponding to the red data signals DR1'-DRn' is supplied to the red EL device so that the red EL device is driven.

[0070] Subsequently, when the second scan signal S1'(G) is applied to the first gate line 511 during a second sub frame 1SF_G of the first frame 1F, green data signals DG1'-DGn' are supplied to the driving transistor through the data lines 521-52n. When the first and second emission control signals EC_11, EC_21 from the emission control signal generating circuit 590 in high and low states, respectively, for controlling the green EL device EL_G' of the pixels P11'~P1n' connected to the first gate

line 511 are applied to the sequential control unit 550 through the emission control lines 591a, 591b, the thin film transistors M55_G1, M55_G2 are turned on, and driving current corresponding to the green data signals DG1'-DGn' is supplied to the green EL device so that the green EL device is driven.

[0071] Finally, when the third scan signal S1'(B) is applied to the first gate line 511 during a third sub frame 1SF_B of the first frame 1F, blue data signals DB1'-DBn' are supplied to the driving transistor through the data lines 521-52n. When the first and second emission control signals EC_11, RC_21 from the emission control signal generating circuit 590, both in the high state, for controlling the blue EL device EL_B' of the pixels P11'~P1n' connected to the first gate line 511 are applied to the sequential control unit 550 through the emission control lines 591 a, 591 b, the thin film transistors M55_B1, M55_B2 are turned on, and driving current corresponding to the blue data signals DB1'-DBn' is supplied to the blue EL device so that the blue EL device is driven.

[0072] Subsequently, when a scan signal S2' is applied to the second gate line 512 per each sub frame of one frame, red, green and blue data signals DR1'-DRn', DG1'-DGn', DB1'-DBn' are sequentially applied to the data lines 521-52n. Further, first and second emission control signals EC_12, EC_22 from the emission control signal generating unit 590 for sequentially controlling the red, green and blue EL devices of the pixels P21'~P2n' connected to the second gate line 512 are sequentially applied to the sequential control unit 550 through the emission control lines 591 a and 591 b as described above. Therefore, the thin film transistors M55_R1 and M55_R2, M55_G1 and M55_G2, and M55_B1 and M55_B2 are sequentially turned on, and driving currents corresponding to red, green and blue data signals DR1'-DRn', DG1'-DGn', DB1'-DBn' are sequentially supplied to the red, green and blue EL devices so that the red, green and blue EL devices are time-divisionally driven.

[0073] The red, green and blue data signals DR1'-DRn', DG1'-DGn', DB1'~DBn' are sequentially applied to the data lines 521-52n, and emission control signals EC_1m, EC_2m from the emission control signal generating circuit 590 for time-divisionally controlling the red, green and blue EL devices of the pixels Pm1'~Pmn' connected to the mth gate line 51m are sequentially applied to the sequential control unit 550 when the scan signal is applied to the mth gate line 51m per each sub frame of one frame by repeating the above described actions. Accordingly, the thin film transistors M55_R1 and M55_R2, M55_G1 and M55_G2, and M55_B1 and M55_B2 are sequentially turned on, and driving currents corresponding to the red, green and blue data signals DR1'-DRn', DG1'-DGn', DB1'-DBn' are sequentially supplied to the red, green and blue EL devices so that the red, green and blue EL devices are time-divisionally driven.

[0074] Therefore, one frame is divided into three sub frames in the described exemplary embodiment, and an

image is displayed by time-divisionally sequentially driving red, green and blue EL devices during the three sub frames. The image displayed using sequential driving of the EL devices is perceived by people as simultaneous driving of the EL devices since the sequential driving time of the red, green and blue EL devices is very fast although the red, green and blue EL devices are sequentially driven.

[0075] Further, an organic electroluminescent display device of the present invention is capable of controlling white balance by controlling emission time of the red, green and blue EL devices, wherein the organic electroluminescent display device is capable of controlling white balance by controlling turn on times of the thin film transistors M55_R1 and M55_R2, M55_G1 and M55_G2, and M55_B1 and M55_B2 of the sequential control unit 550 of FIG. 8A and FIG. 8B, thereby controlling emission time of the red, green and blue EL devices.

[0076] In more detail, turn on times t_r , t_g , t_b of the first and second emission control signals EC_11, EC_21 generated from the emission control signal generating means 590 are controlled per each sub frame as illustrated in FIG. 10, and times for turning on the thin film transistors M55_R1 and M55_R2, M55_G1 and M55_G2, and M55_B1 and M55_B2 of the sequential control unit 550 are determined accordingly.

[0077] Therefore, as sequential emission of the red, green and blue EL devices is controlled by the two emission control signals EC_11, EC_21 in the exemplary embodiments of the present invention, white balance is controlled by controlling emission time of two EL devices in the red, green and blue EL devices as illustrated in FIG. 10. While FIG. 10 illustrates controlling of the white balance by controlling emission times t_r , t_g of the red and green EL devices, the white balance can also be controlled by controlling emission times of the green and blue EL devices or the blue and red EL devices.

[0078] As described above, in exemplary embodiments of the present invention, not only white balance is controlled by controlling red, green and blue emission times, but also the red, green and blue emission times may further be controlled to optimize brightness in the state that the red, green and blue emission times are primarily controlled so that white balance is controlled.

[0079] FIG. 11 illustrates a block structural view of an organic electroluminescent display device 60 having a pixel part 600 according to a second exemplary embodiment of the present invention. The organic electroluminescent display device 60 of FIG. 11 has the similar structure and operation as the organic electroluminescent display device 50 of FIG. 4 except that two gate line driving circuits 510a, 510b and two emission control signal generating circuits 590a, 590b are arranged.

[0080] That is, it is constructed in such a way that scan signals are supplied to some of the gate lines from the first gate line driving circuit 510a, and scan signals are supplied to the rest of the gate lines from the second gate line driving circuit 510b, wherein the scan signals are

applied to the upper part of the gate lines from the first gate line driving circuit 510a, and the scan signals are sequentially applied to the lower part of the gate lines from the second gate line driving circuit 510b. In further embodiments, the scan signals may be applied to even numbered gate lines from a first gate line driving circuit, and the scan signals may be applied to odd numbered gate lines from a second gate line driving circuit so as to reduce density of the gate lines arranged in the pixel part. In such cases, each of the first and second gate line driving circuits 510a, 510b may have circuitry for generating only half the scan signals so as to save cost and space.

[0081] In the organic electroluminescent display device 60, scan signals may be substantially simultaneously supplied to the gate lines from the driving circuits 510a, 510b to reduce delay and/or to supply redundancy. To provide such signal delay reduction or redundancy capabilities, the first and second gate line driving circuits 510a, 510b may generate scan signals S11~S1m and scan signals S21~S2m, respectively, corresponding to all of the scan lines.

[0082] In the organic electroluminescent display device 60, emission control signals are supplied to some of the emission control lines from first emission control signal generating circuit 590a, and emission control signals are supplied to the rest of the emission control lines from a second emission control signal generating circuit 590b, wherein the emission control signals are applied to the upper part of the emission control signal lines from the first emission control signal generating circuit 590a, and the emission control signals are sequentially applied to the lower part of the emission control signal lines from the second emission control signal generating circuit 590b. In further embodiments, the emission control signals may be applied to even numbered emission control lines from a first emission control signal generating circuit, and the emission control signals may be applied to odd numbered emission control lines from a second emission control signal generating circuit, so as to reduce density of emission control lines arranged in the pixel part. In such cases, each of the first and second emission control line generating circuits 590a, 590b may have circuitry for generating only half the emission control signals so as to save cost and space.

[0083] In the organic electroluminescent display device 60, emission control signals may be substantially simultaneously supplied to the emission control lines from the first and second emission control signal generating circuits 590a, 590b to reduce delay and/or to supply redundancy. To provide such signal delay reduction or redundancy capabilities, the first and second emission control generating circuits 590a, 590b may generate emission control signals EC_111, EC_121~EC_11m, EC_12m and emission control signals EC_211, EC_221~EC_21m, EC_22m, respectively, corresponding to all of the emission control lines.

[0084] FIG. 12 illustrates a block structural view of an organic electroluminescent display device 70 having a

pixel part 700 according to a third exemplary embodiment of the present invention. The organic electroluminescent display device 70 of FIG. 12 has the similar structure and operation as the organic electroluminescent display device 60 of FIG. 11 except that arrangement positions of two gate line driving circuits 510a', 510b' and two emission control signal generating circuits 590a', 590b' are different from the corresponding circuits of FIG. 11. The first gate line driving circuit 510a' may generate scan signals S11'~S1m', and the second gate line driving circuit 510b' may generate scan signals S21'~S2m'. In other embodiments, the first and second gate line driving circuits 510a', 510b' may each generate only half of the scan signals so as to save cost and space.

[0085] The first emission control signal generating circuit 590a' may generate emission control signals EC_111', EC_121'-EC_11 m', EC_12m', and the second emission control signal generating circuit 590b' may generate emission control signals EC_211', EC_221'-EC_21m', EC_22m'. In other embodiments, the first and second emission control signal generating circuits may each generate only half of the emission control signals so as to save cost and space.

[0086] While it is shown in certain exemplary embodiments of the present invention that a plurality of gate line driving circuits and emission control signal generating circuits can be used in an organic electroluminescent display device, a plurality of data line driving circuits may also be used in other embodiments.

[0087] An organic electroluminescent display device according to the above described embodiments of the present invention enables high accuracy fineness by having a driving thin film transistor and a switching thin film transistor shared by red, green and blue EL devices so that the red, green and blue EL devices are time sharingly driven and improves opening ratio and yield by decreasing the number of elements and wirings. An organic electroluminescent display device according to the present invention also results in the reduction of RC delay and voltage drop (IR drop).

[0088] Further, an organic electroluminescent display device according to the present invention also enables controlling of white balance and brightness by controlling emission time of the red, green and blue EL devices.

[0089] While the invention has been shown and described with reference to certain exemplary embodiments thereof, it will be understood by those skilled in the art that the foregoing and other changes in form and details may be made therein without departing from the scope of the invention. The scope of the present invention is indicated by the appended claims, and all changes that come within the meaning and range of equivalents thereof are intended to be embraced therein.

Claims

1. A pixel circuit (P11',P11") of an organic electrolumi-

nescent display device comprising:

a red, a green and a blue EL device (EL1_R', EL1_G', EL1_B");

a driving unit (640) connected to the red, green and blue EL devices to drive the red, green and blue EL devices; and

a sequential control unit (650) for sequentially controlling driving of the red, green and blue EL devices in response to a first and a second emission control signal (591a, 591b),

characterised in that

the sequential control unit comprises a first, a second and a third control devices for sequentially controlling emission of respectively, the red, green and blue EL devices by controlling a supply of driving current to the red, green and blue EL devices from a driving transistor (M52) using the first and second emission control signals,

wherein each of the first, second and third control devices comprises a first and a second thin film transistor (M55_R1, M55_R2, M55_G1, M55_G2, M55_B1, M55_B2) that are connected in series and are connected, between the driving unit and respectively, the red, green and blue EL devices, so that the first and second emission control signals are applied, respectively, to gates of the first and second thin film transistors, wherein the first thin film transistor (M55_R1) of the first control device is of a first type and the second thin film transistor (M55_R2) of the first control device is of a second type different from the first type,

wherein the first thin film transistor (M55_G1) of the second control device is of the second type and the second thin film transistor (M55_G2) of the second control device is of the first type, and wherein the first and the second thin film transistors (M55_B1, M55_B2) of the third control device are both of either the first type or the second type.

2. The pixel circuit of an organic electroluminescent display device according to claim 1, wherein the pixel circuit is adapted to control white balance of the display device, the white balance being controlled by controlling an active "on" time of the first and second emission control signals applied to the sequential control unit, thereby controlling the time during which driving current is applied to corresponding said EL devices using the first and second thin film transistors.

3. The pixel circuit of an organic electroluminescent display device according to one of claims 1 or 2, wherein the driving unit comprises:

a third thin film transistor (M51) having a gate connected to a gate line (511), and one of a source and a drain connected to a data line (521);
 the during transistor (M52) having a gate connected to the other one of the source and the drain of the third thin film transistor, and one of a source and a drain connected to a power supply line (531); and
 a capacitor (651) connected between the gate and said one of the source and the drain of the during transistor.

4. A flat panel display device comprising:

a plurality of gate line (511-51m), data lines (521-52n) and power supply lines (531-53n) and a plurality of pixel circuits (P11'-Pmm'), each said pixel circuit being connected to a corresponding said gate line, a corresponding said data line and a corresponding said power supply line,
 wherein each of the pixel circuits is a pixel circuit according to one of the preceding claims.

Patentansprüche

1. Pixelschaltung (P11', P11'') einer organischen elektrolumineszenten Anzeigevorrichtung, aufweisend:

eine rote, eine grüne und eine blaue EL-Vorrichtung (EL1_R', EL1_G', EL1_B');
 eine Ansteuerereinheit (540), die zur Ansteuerung der roten, grünen und blauen EL-Vorrichtung mit der roten, grünen und blauen EL-Vorrichtung verbunden ist; und
 eine Ablaufsteuerungseinheit (550) zur aufeinanderfolgenden Steuerung der Ansteuerung der roten, grünen und blauen EL-Vorrichtung in Reaktion auf ein erstes und ein zweites Emissionskontrollsignal (591a, 591b),
dadurch gekennzeichnet, dass
 die Ablaufsteuerungseinheit eine erste, eine zweite und eine dritte Steuervorrichtung zur aufeinanderfolgenden Steuerung der Emission jeweils der roten, grünen und blauen EL-Vorrichtung durch die Steuerung einer Versorgung der roten, grünen und blauen EL-Vorrichtung mit einem Ansteuerstrom von einem Ansteuertransistor (M52) mittels des ersten und zweiten Emissionskontrollsignals aufweist,
 wobei die erste, zweite und dritte Steuervorrichtung jeweils einen ersten und einen zweiten Dünnfilmtransistor (M55_R1, M55_R2, M55_G1, M55_G2, M55_B1, M55_B2) aufweisen, die in Reihe geschaltet sind und zwischen die Ansteuerereinheit und jeweils die rote, grüne

und blaue EL-Vorrichtung geschaltet sind, so dass das erste und zweite Emissionskontrollsignal jeweils an Gates des ersten und des zweiten Dünnfilmtransistors angelegt werden,
 wobei der erste Dünnfilmtransistor (M55_R1) der ersten Steuervorrichtung einem ersten Typ entspricht und der zweite Dünnfilmtransistor (M55_R2) der ersten Steuervorrichtung einem zweiten Typ entspricht, der anders als der erste Typ ist,
 wobei der erste Dünnfilmtransistor (M55_G1) der zweiten Steuervorrichtung dem zweiten Typ entspricht und der zweite Dünnfilmtransistor (M55_G2) der zweiten Steuervorrichtung dem ersten Typ entspricht, und
 wobei sowohl der erste als auch der zweite Dünnfilmtransistor (M55_B1, M55_B2) der dritten Steuervorrichtung entweder dem ersten Typ oder dem zweiten Typ entsprechen.

2. Pixelschaltung einer organischen elektrolumineszenten Anzeigevorrichtung nach Anspruch 1, wobei die Pixelschaltung zur Steuerung des Weißabgleichs der Anzeigevorrichtung ausgebildet ist, wobei der Weißabgleich durch die Steuerung einer aktiven "Ein"-Zeit des ersten und zweiten Emissionskontrollsignals, die an der Ablaufsteuerungseinheit anliegen, gesteuert wird, so dass die Zeit gesteuert wird, während der mittels des ersten und zweiten Dünnfilmtransistors ein Ansteuerstrom an den entsprechenden besagten EL-Vorrichtungen anliegt.

3. Pixelschaltung einer organischen elektrolumineszenten Anzeigevorrichtung nach einem der Ansprüche 1 oder 2, wobei die Ansteuerereinheit aufweist:

einen dritten Dünnfilmtransistor (M51), der ein Gate, das mit einer Gate-Leitung (511) verbunden ist, und eine/eines von einer Source und einem Drain aufweist, die/das mit einer Datenleitung (521) verbunden ist;
 wobei der Ansteuertransistor (M52) ein Gate, das mit der/dem anderen der Source und des Drain des dritten Dünnfilmtransistors verbunden ist, und eine/eines von einer Source und einem Drain aufweist, die/das mit einer Energieversorgungsleitung (531) verbunden ist; und
 einen Kondensator (C51), der zwischen das Gate und die/das besagte eine von der Source und dem Drain des Ansteuertransistors geschaltet ist.

4. Flachtafelanzeigevorrichtung, aufweisend:

eine Vielzahl von Gate-Leitungen (511-51m), Datenleitungen (521-52n) und Energieversorgungsleitungen (531-53n); und
 eine Vielzahl von Pixelschaltungen (P11'-

Pmn'), wobei jede besagte Pixelschaltung mit einer entsprechenden besagten Gate-Leitung, einer entsprechenden besagten Datenleitung und einer entsprechenden besagten Energieversorgungsleitung verbunden ist, wobei jede der Pixelschaltungen eine Pixelschaltung nach einem der vorhergehenden Ansprüche ist.

Revendications

1. Circuit de pixel (P11', P11'') d'un dispositif d'affichage électroluminescent organique, comprenant :

des dispositifs EL rouge, vert et bleu (EL1_R', EL1_G', EL1_B') ;
une unité d'attaque (540) connectée aux dispositifs EL rouge, vert et bleu pour attaquer les dispositifs EL rouge, vert et bleu ; et
une unité de commande séquentielle (550) destinée à commander séquentiellement l'attaque des dispositifs EL rouge, vert et bleu en réponse à des premier et deuxième signaux de commande d'émission (591a, 591b),

caractérisé en ce que

l'unité de commande séquentielle comprend des premier, deuxième et troisième dispositifs de commande destinés à commander séquentiellement l'émission respective des dispositifs EL rouge, vert et bleu en commandant la fourniture d'un courant d'attaque aux dispositifs EL rouge, vert et bleu par un transistor d'attaque (M52) en utilisant les premier et deuxième signaux de commande d'émission, dans lequel chacun des premier, deuxième et troisième dispositifs de commande comprend des premier et deuxième transistors à couches minces (M55_R1, M55_R2, M55_G1, M55_G2, M55_B1, M55_B2) qui sont connectés en série et qui sont respectivement connectés entre l'unité d'attaque et les dispositifs EL rouge, vert et bleu, de manière à ce que les premier et deuxième signaux de commande d'émission soient respectivement appliqués aux grilles des premier et deuxième transistors à couches minces, dans lequel le premier transistor à couches minces (M55_R1) du premier dispositif de commande est d'un premier type et le deuxième transistor à couches minces (M55_R2) du premier dispositif de commande est d'un deuxième type différent du premier type, dans lequel le premier transistor à couches minces (M55_G1) du deuxième dispositif de commande est du deuxième type et le deuxième transistor à couches minces (M55_G2) du deuxième dispositif de commande est du premier type, et

dans lequel les premier et deuxième transistors à couches minces (M55_B1, M55_B2) du troisième dispositif de commande sont tous deux soit du premier type soit du deuxième type.

5

2.

10

15

20

25

30

35

40

45

50

55

2. Circuit de pixel d'un dispositif d'affichage électroluminescent organique selon la revendication 1, dans lequel le circuit de pixel est apte à commander l'équilibre des blancs du dispositif d'affichage, l'équilibre des blancs étant commandé par commande d'un temps "passant" actif des premier et deuxième signaux de commande d'émission appliqués à l'unité de commande séquentielle, pour ainsi commander le temps pendant lequel un courant d'attaque est appliqué auxdits dispositifs EL correspondants en utilisant les premier et deuxième transistors à couches minces.

3. Circuit de pixel d'un dispositif d'affichage électroluminescent organique selon l'une des revendications 1 ou 2, dans lequel l'unité de commande comprend :

un troisième transistor à couches minces (M51) ayant une grille connectée à une ligne de grille (511) et l'un d'une source et d'un drain connecté à une ligne de données (521) ;
le transistor d'attaque (M52) ayant une grille connectée à l'autre de la source et du drain du troisième transistor à couches minces, et l'un d'une source et d'un drain connecté à une ligne d'alimentation électrique (531) ; et
un condensateur (C51) connecté entre la grille et ledit un de la source et du drain du transistor d'attaque.

4. Dispositif d'affichage à panneau plat comprenant :

une pluralité de lignes de grilles (511-51m), de lignes de données (521-52n) et de lignes d'alimentation électrique (531-53n) ; et
une pluralité de circuits de pixels (P11'-Pmn'), chaque circuit de pixel étant connecté à une ligne de grille correspondante, à une ligne de données correspondante et à une ligne d'alimentation électrique correspondante, chacun des circuits de pixels étant un circuit de pixel selon l'une des revendications précédentes.

FIG. 12

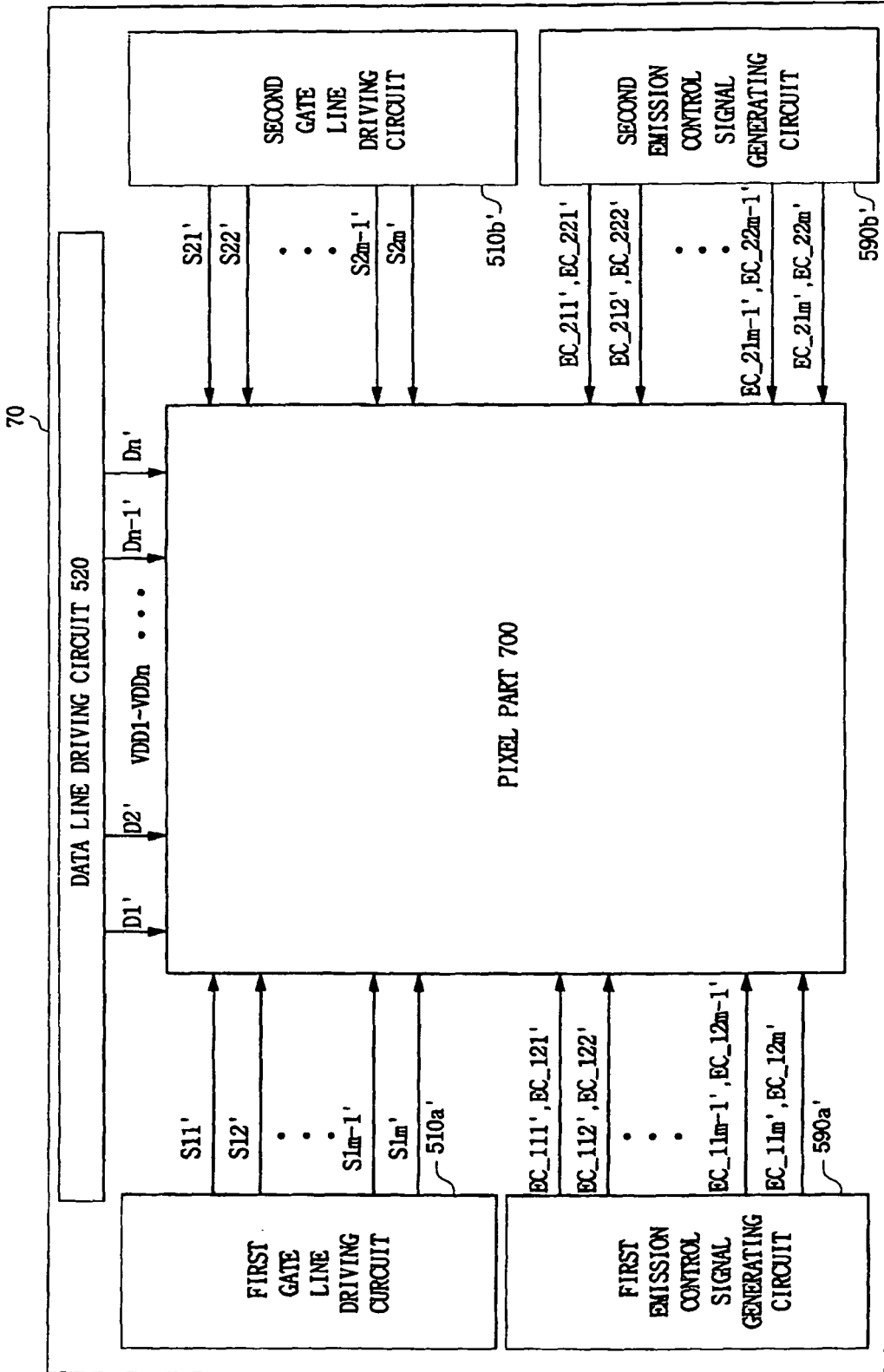


FIG. 1

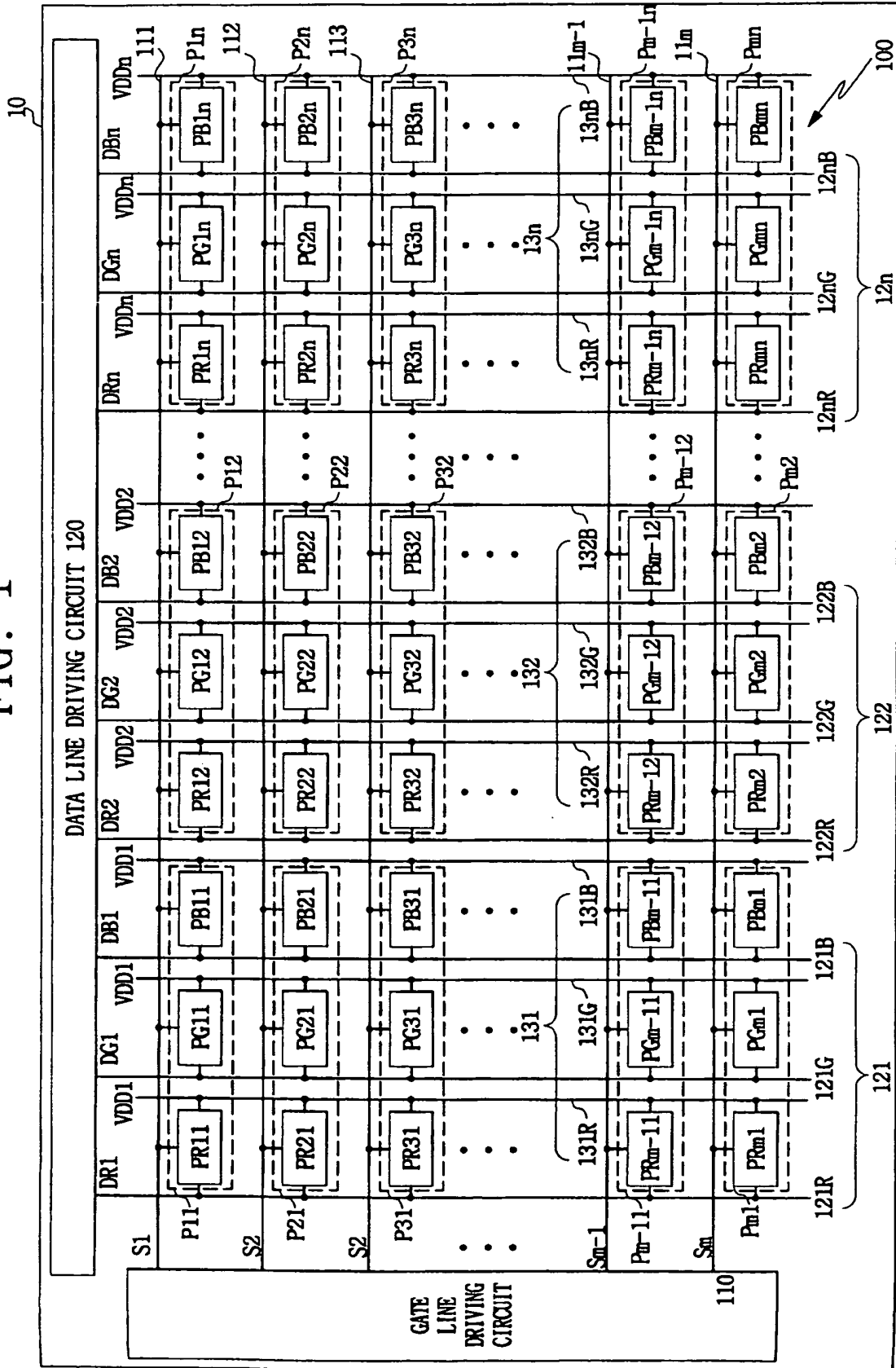


FIG. 2

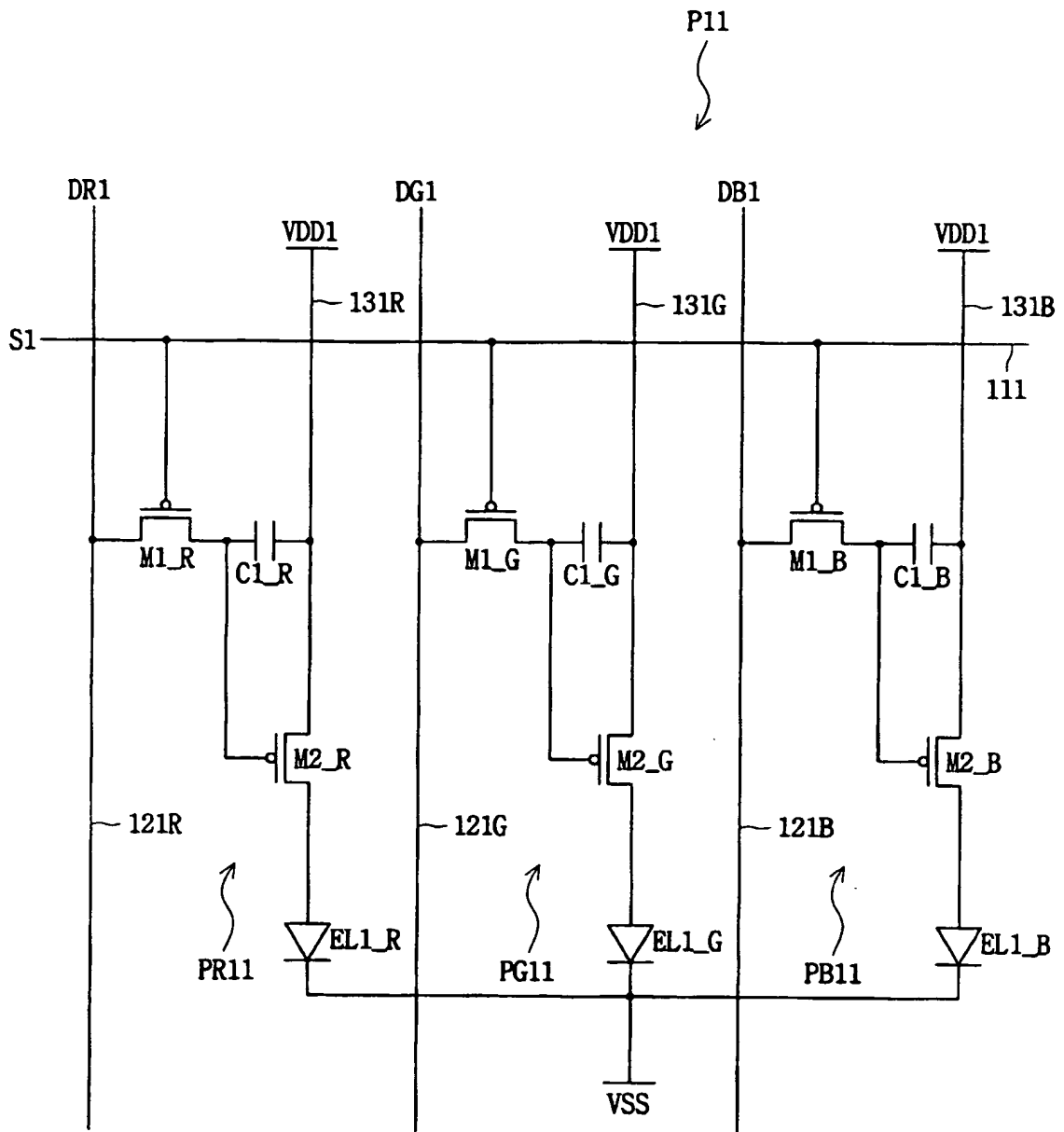


FIG. 3

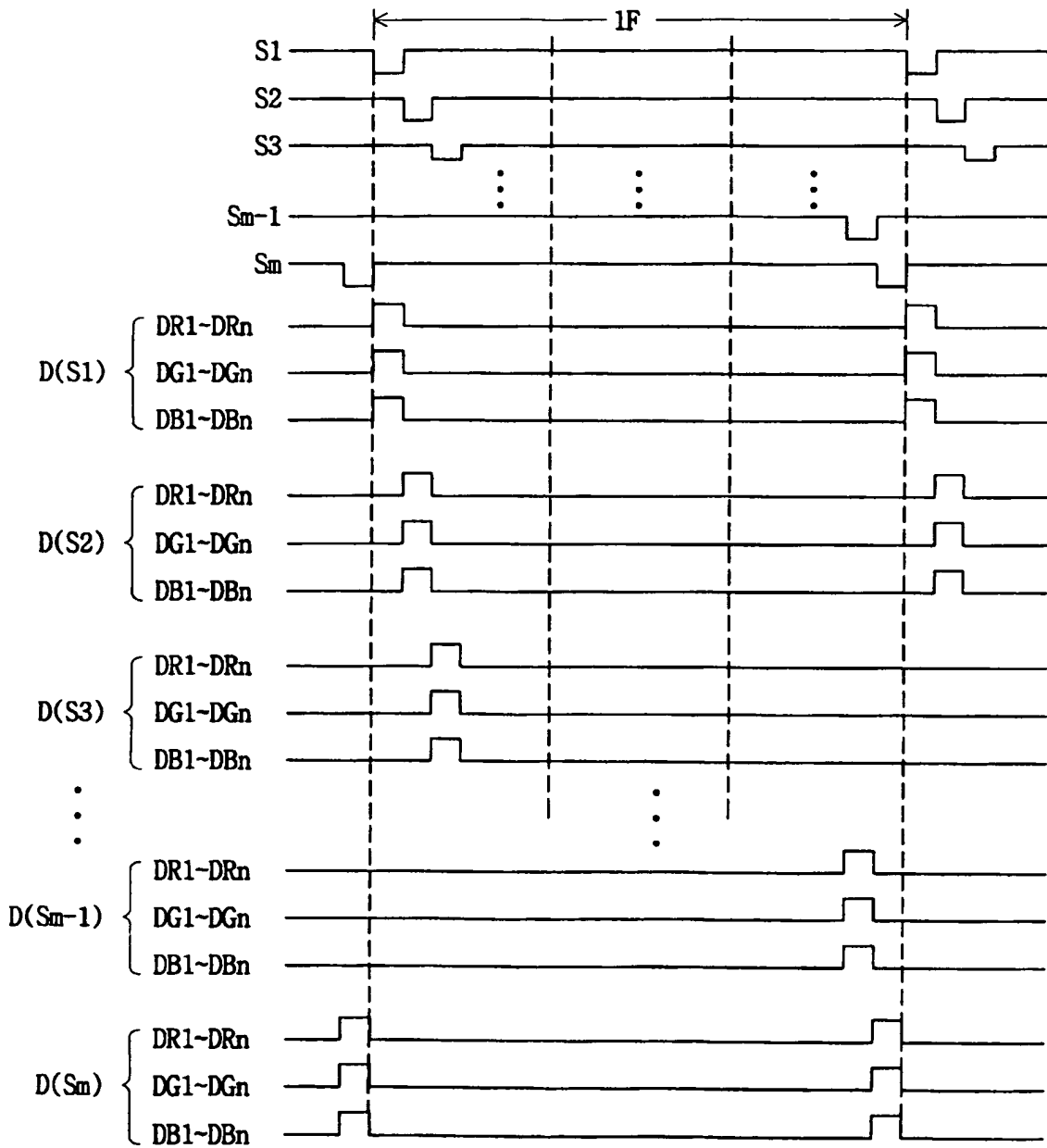


FIG. 4

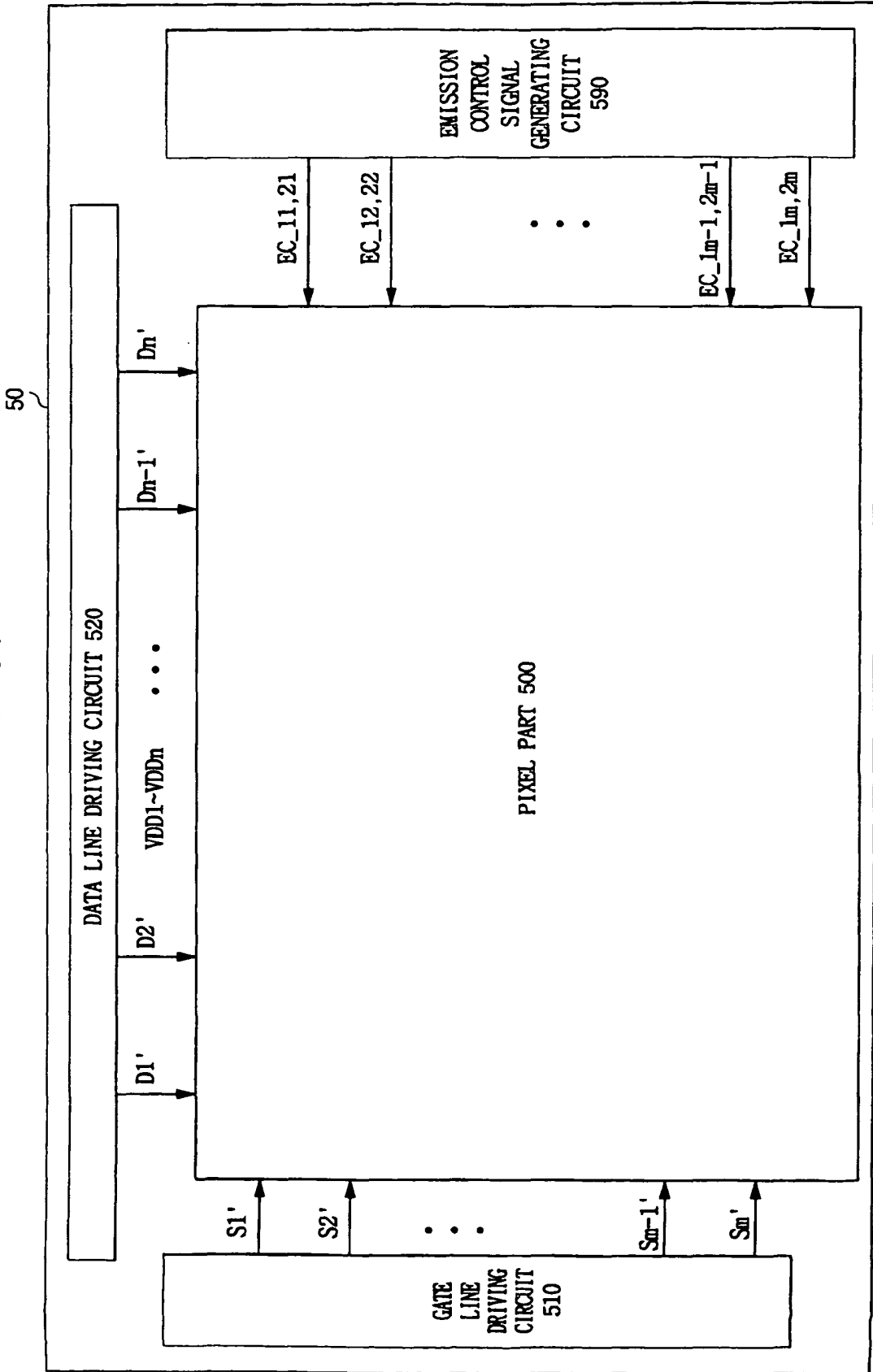


FIG. 5A

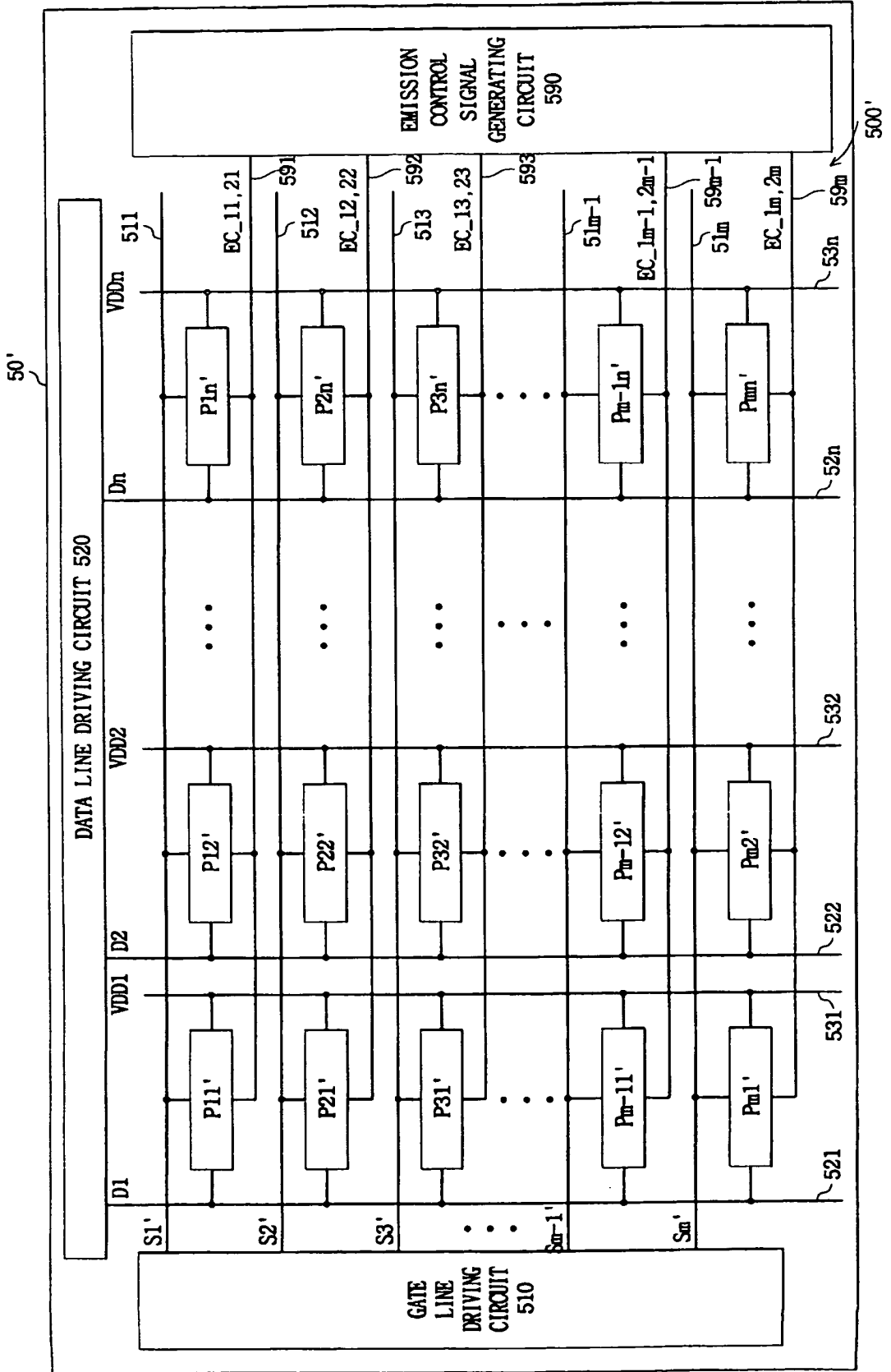


FIG. 5B

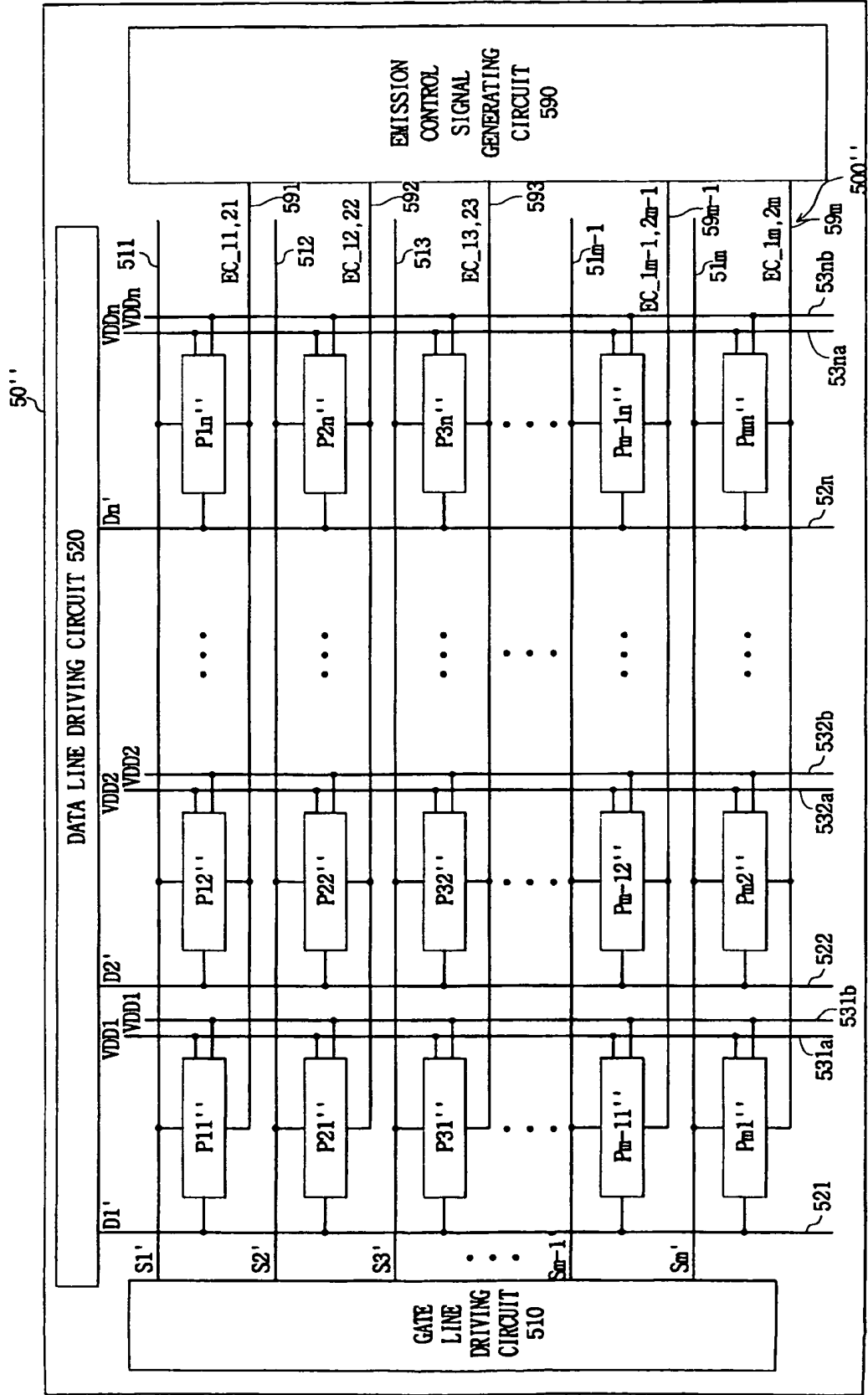


FIG. 6

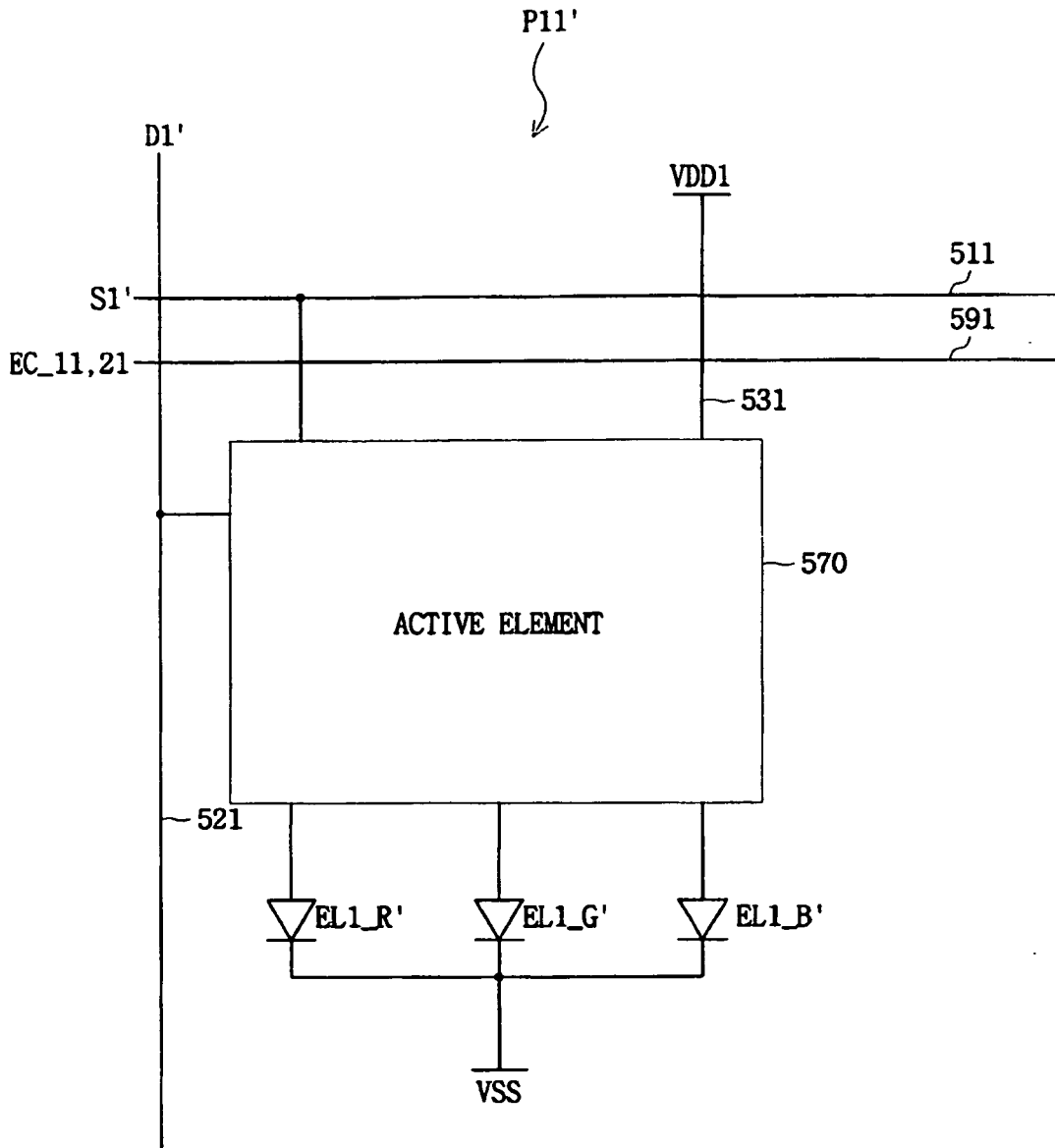


FIG. 7A

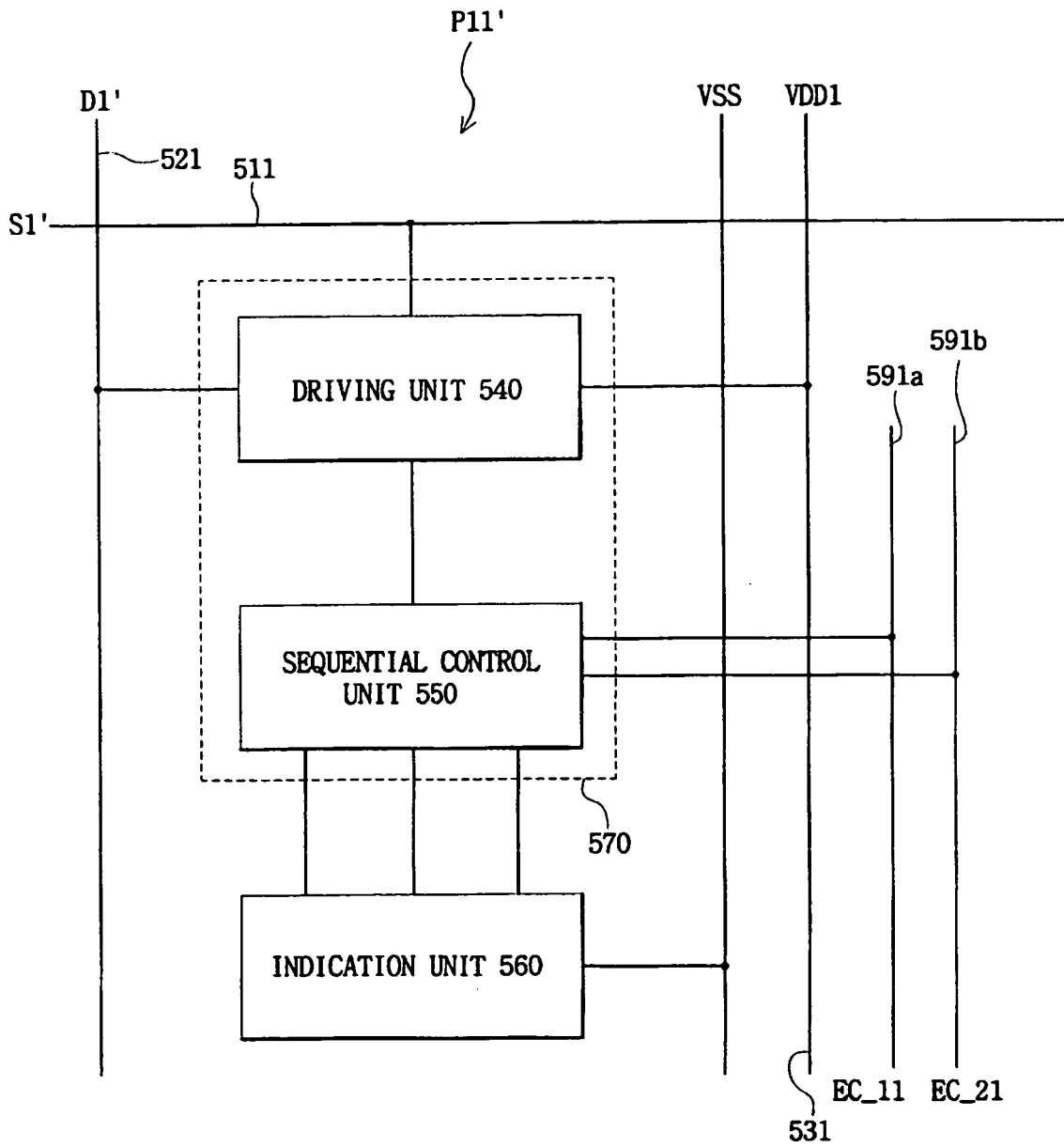


FIG. 7B

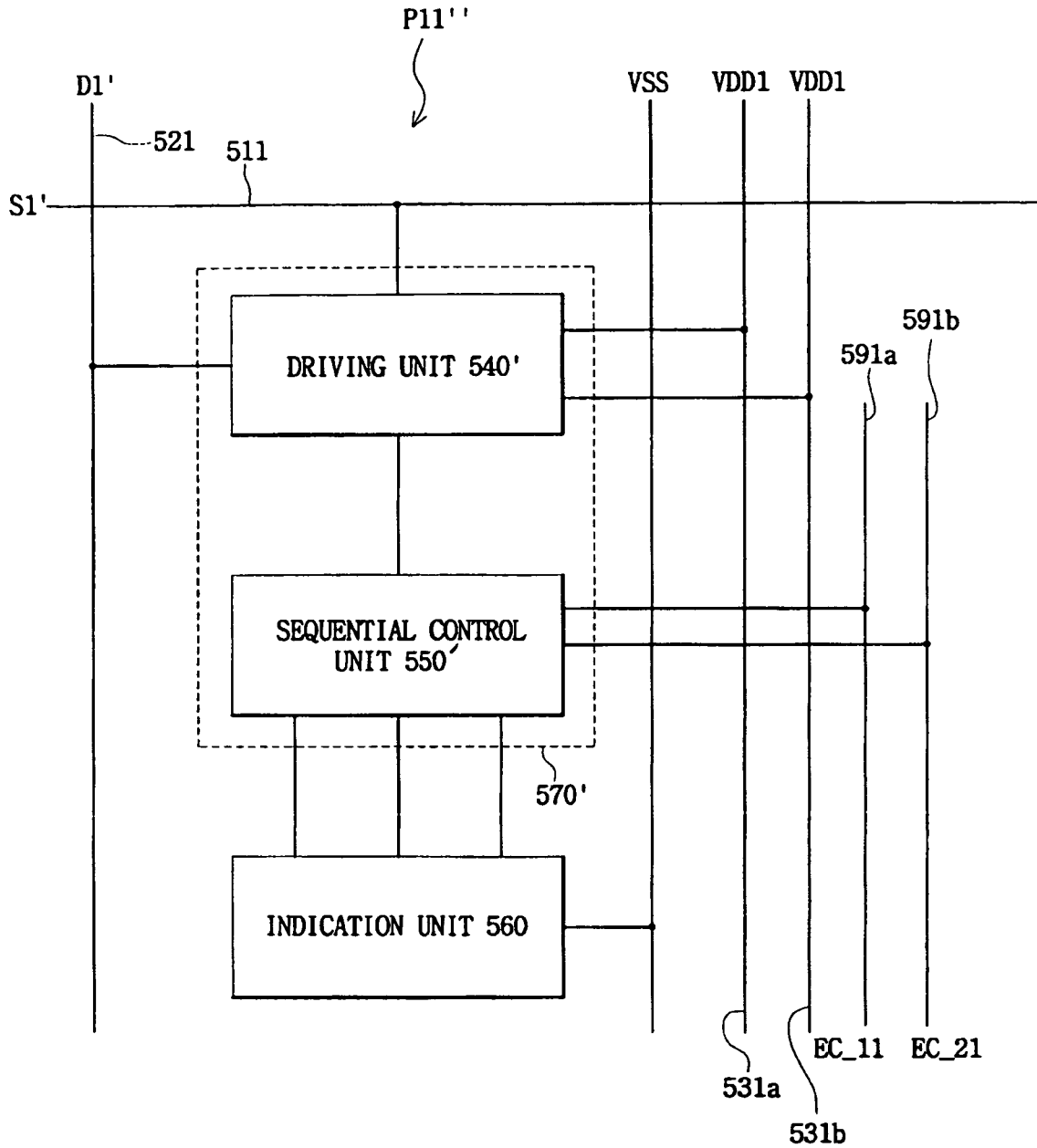


FIG. 8B

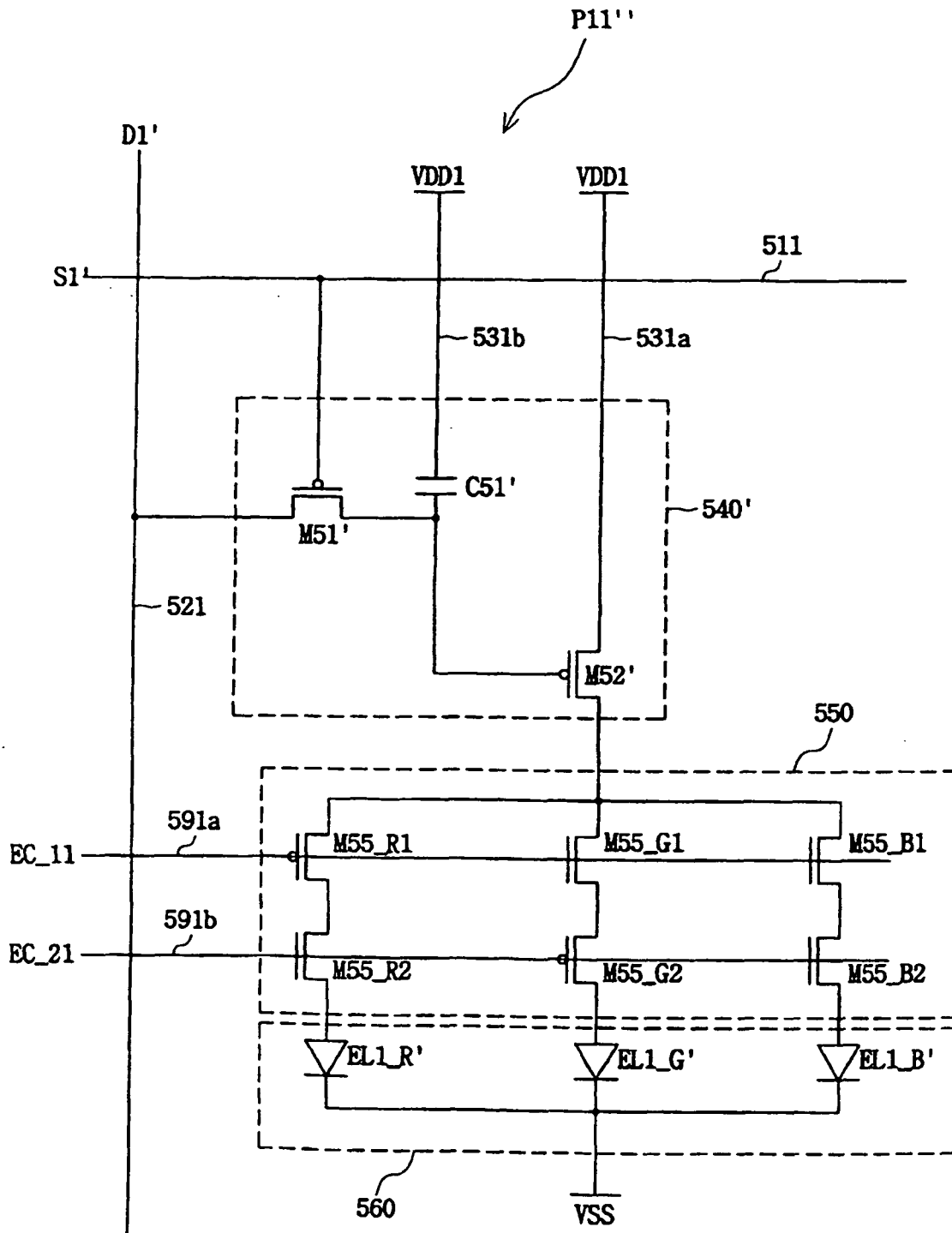


FIG. 9

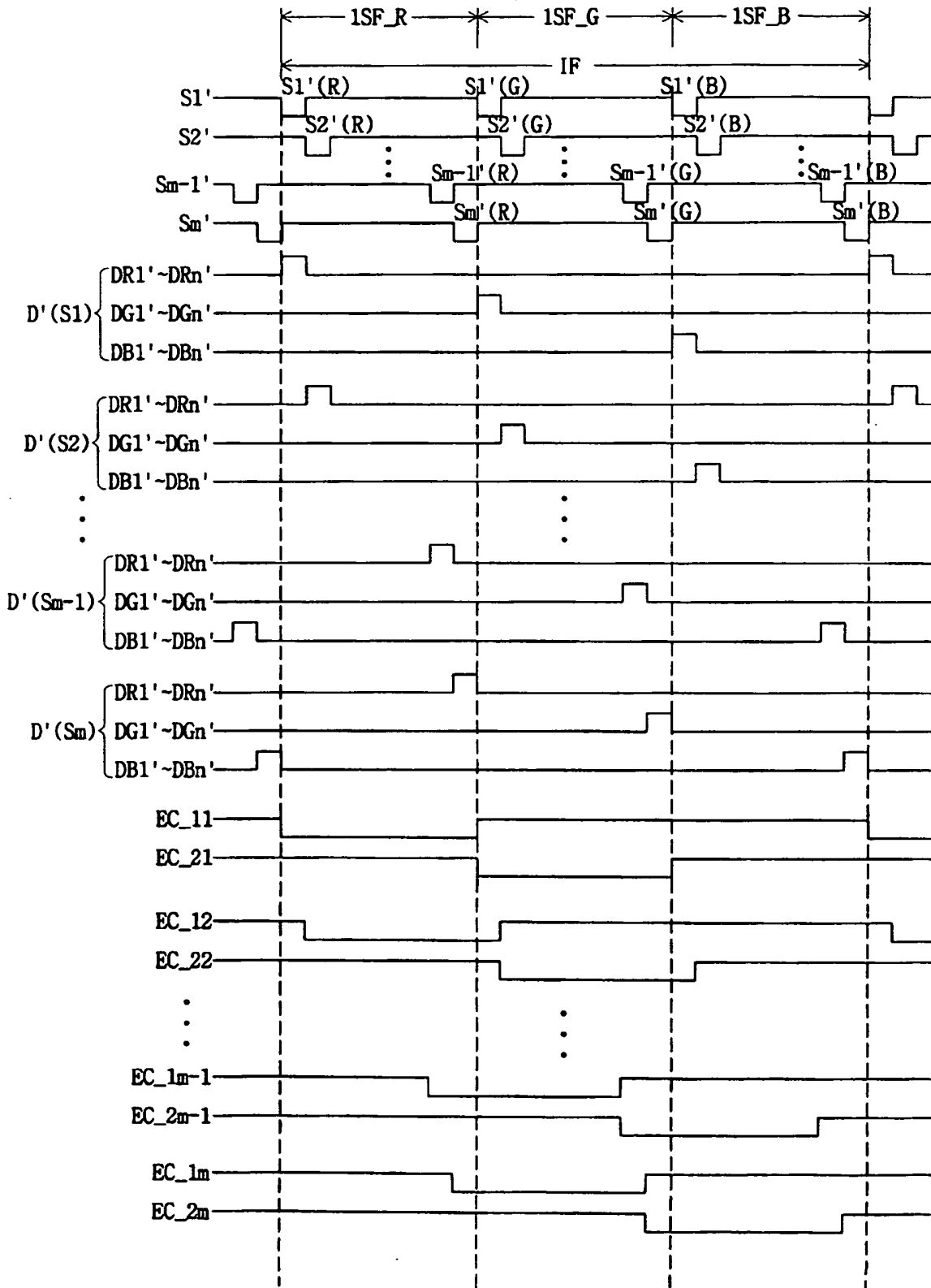


FIG. 10

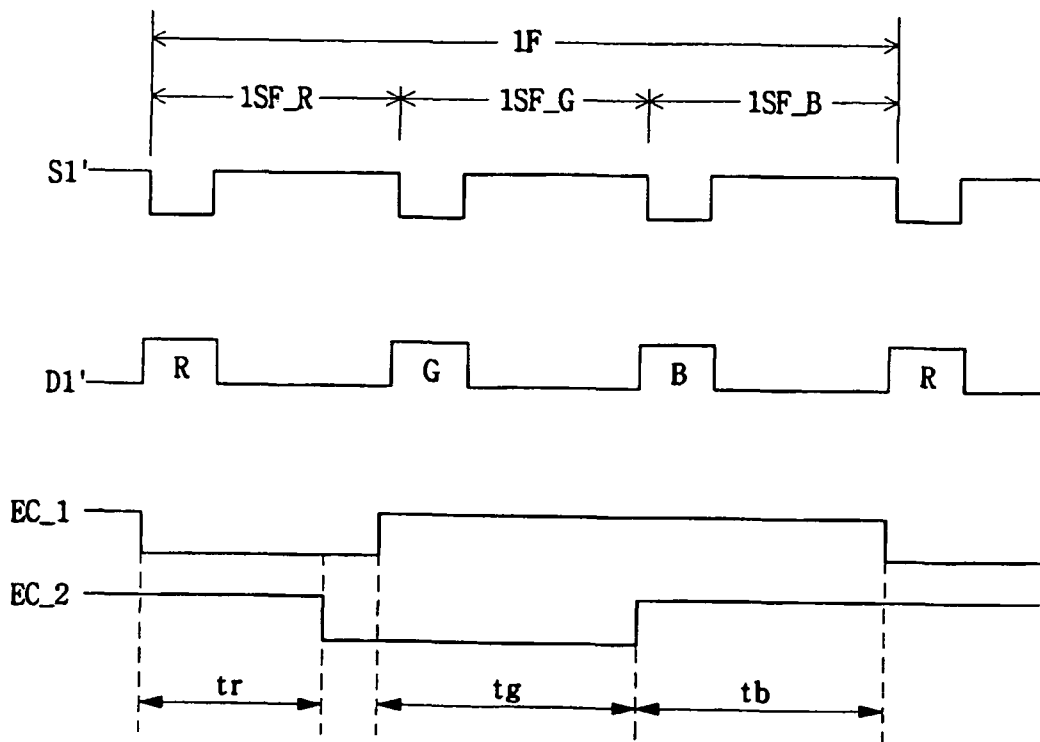
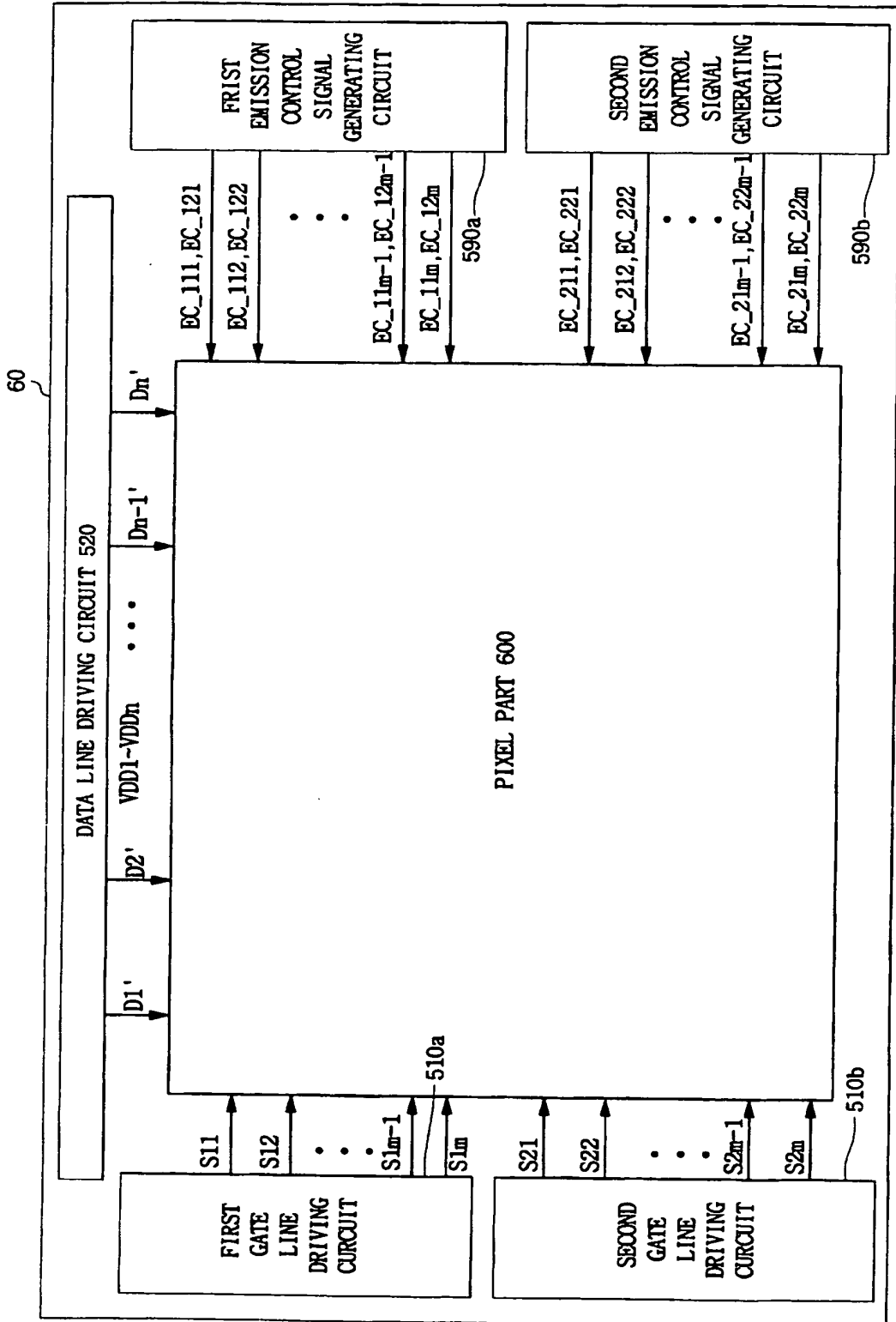


FIG. 11



REFERENCES CITED IN THE DESCRIPTION

This list of references cited by the applicant is for the reader's convenience only. It does not form part of the European patent document. Even though great care has been taken in compiling the references, errors or omissions cannot be excluded and the EPO disclaims all liability in this regard.

Patent documents cited in the description

- KR 200380739 [0001]
- EP 0762374 A [0027]
- US 6421033 B [0027]

专利名称(译)	有机电致发光显示装置		
公开(公告)号	EP1531450B1	公开(公告)日	2013-01-09
申请号	EP2004090399	申请日	2004-10-18
[标]申请(专利权)人(译)	三星斯笛爱股份有限公司		
申请(专利权)人(译)	三星SDI CO., LTD.		
当前申请(专利权)人(译)	三星DISPLAY CO., LTD.		
[标]发明人	KWAK WON KYU C O SAMSUNG SDI CO LTD		
发明人	KWAK, WON-KYU, C/O SAMSUNG SDI CO. LTD.		
IPC分类号	G09G3/32 H01L51/50 G09G3/20 G09G3/22 G09G3/291 G09G3/296 G09G3/30		
CPC分类号	G09G3/2022 G09G3/3233 G09G2300/0465 G09G2300/0814 G09G2300/0842 G09G2300/0861 G09G2300/0866 G09G2310/0235 G09G2310/06 G09G2320/043		
代理机构(译)	hengelhaupt, Jürgen		
优先权	1020030080739 2003-11-14 KR		
其他公开文献	EP1531450A8 EP1531450A3 EP1531450A2		
外部链接	Espacenet		

摘要(译)

1. 一种用于在显示时间段期间发射特定颜色的显示装置的像素电路，所述像素电路包括至少两个发光元件，每个所述发光元件用于在所述显示时间段期间发射对应的一种颜色。有源元件共同连接到所述至少两个发光元件，以响应于至少一个发射控制信号来驱动所述至少两个发光元件。有源元件在显示时间周期的显示时间子周期期间使用至少一个发射控制信号以时分方式驱动至少两个发光元件。所述至少两个发光元件通过以时分方式发射所述颜色中的相应颜色来实现所述显示时间周期中的特定颜色，所述颜色中的相应颜色在每个显示时间子周期期间被发射。

