



(11) **EP 3 229 272 A1**

(12) **EUROPEAN PATENT APPLICATION**

(43) Date of publication:
11.10.2017 Bulletin 2017/41

(51) Int Cl.:
H01L 27/32^(2006.01) G06F 1/16^(2006.01)

(21) Application number: **16181191.4**

(22) Date of filing: **26.07.2016**

(84) Designated Contracting States:
AL AT BE BG CH CY CZ DE DK EE ES FI FR GB GR HR HU IE IS IT LI LT LU LV MC MK MT NL NO PL PT RO RS SE SI SK SM TR
Designated Extension States:
BA ME
Designated Validation States:
MA MD

(72) Inventors:
• **CHOI, YeongRak**
03727 Seoul (KR)
• **OH, ChangHo**
137-804 Seoul (KR)
• **PARK, KwanHo**
413-902 Gyeonggi-do (KR)
• **LEE, Sungtae**
21341 Incheon (KR)

(30) Priority: **05.04.2016 KR 20160041384**

(74) Representative: **Harden, Henry Simon et al**
Kilburn & Strode LLP
20 Red Lion Street
London WC1R 4PJ (GB)

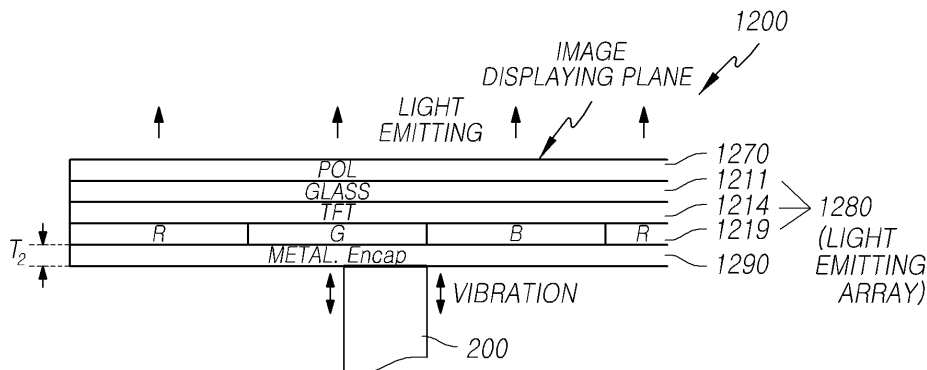
(71) Applicant: **LG Display Co., Ltd.**
Yeongdeungpo-gu
Seoul
150-721 (KR)

(54) **ORGANIC LIGHT EMITTING DISPLAY DEVICE**

(57) Embodiments of the present disclosure relate to an organic light emitting display device which directly vibrates an organic light emitting display panel (1200) to generate sound, and includes: an organic light emitting display panel (1200) including a light emitting layer (1280) including an organic light emitting material layer (1219) and an encapsulation layer (1290) disposed at one side of the light emitting layer; and a sound generating actuator (200) in direct contact with the organic light

emitting display panel to vibrate the organic light emitting display panel to generate sound. Especially, the organic light emitting display panel employs the bottom emission scheme, and thus can prevent generation of a weighted color mixing phenomenon in a wide viewing angle at the time of panel vibration and reduce the thickness or weight of the panel to thereby enhance the sound generation characteristic.

FIG. 7A



EP 3 229 272 A1

Description

CROSS REFERENCE TO RELATED APPLICATION

[0001] This application claims priority from Korean Patent Application No. 10-2016-0041384, filed on April 5, 2016, which is hereby incorporated by reference for all purposes as if fully set forth herein.

BACKGROUND OF THE INVENTION

1. Field of the invention

[0002] The present disclosure relates to an Organic Light Emitting Display (OLED) device and, more particularly, to an organic light emitting display device including a sound generating apparatus configured to directly vibrate an organic light emitting display panel to generate sound.

2. Description of the Prior Art

[0003] With the development of various portable electronic devices, such as a mobile communication terminal and a notebook computer, a requirement for a flat panel display device applicable thereto is increasing.

[0004] The flat panel display devices, which are being researched, include a Liquid Crystal Display Device, a Plasma Display Panel, a Field Emission Display Device, a Light Emitting Diode Display Device, and an Organic Light Emitting Diode Display Device.

[0005] Among these display devices, the Liquid Crystal Display (LCD) device includes: an array substrate including a thin film transistor; an upper substrate including a color filter and/or a black matrix, etc.; and a liquid crystal material layer formed therebetween, wherein an alignment state of the liquid crystal layer is controlled according to an electric field applied between opposite electrodes of a pixel area, and thereby the transmittance of light is adjusted to display an image.

[0006] In a display panel of such a liquid crystal display device, an Active Area (AA) configured to provide an image to a user and a Non-active Area (NA), which is a peripheral area of the Active Area (AA), are defined. The display panel is usually manufactured by attaching a first substrate, which is an array substrate having a thin film transistor formed therein to define a pixel area, and a second substrate, which is an upper substrate having a black matrix and/or color filter layer formed thereon, to each other.

[0007] The array substrate or first substrate, on which a thin film transistor is formed, includes a plurality of gate lines GS extending in a first direction and a plurality of data lines DL extending in a second direction perpendicular to the first direction, and one pixel area P is defined by each gate line and each data line. One or more thin film transistors are formed in one pixel area P, and gate and source electrodes of each thin film transistor may be

connected to a gate line and a data line, respectively.

[0008] Among these display devices, the liquid crystal display device does not have its own light-emitting element and thus needs a separate light source. Therefore, the liquid crystal display device has a back-light unit having a light source, such as an LED, which is arranged at the rear surface thereof and irradiates a light toward a front surface of the liquid crystal panel thereof, thereby at last implementing a recognizable image.

[0009] Meanwhile, the organic light emitting display device recently coming into the spotlight as a display device has advantages of a fast response rate, a high light emitting efficiency, a high luminance and a wide viewing angle because of using an Organic Light Emitting Diode (OLED) which emits light by itself.

[0010] The organic light emitting display device as described above is a self-light-emitting element. Therefore, the organic light emitting display device does not require a back-light, which is used in a liquid crystal display device using a non-light-emitting element, and thus can be made to be light and thin. Further, the organic light emitting display device has an excellent viewing angle and an excellent contrast ratio and is advantageous in view of the power consumption, in comparison with the liquid crystal display device. Moreover, the organic light emitting display device can be driven by a low voltage direct current, has a rapid response speed, and includes solid internal components. Therefore, the organic light emitting display device is strong against an external impact, can be used in a wide temperature range, and requires a low manufacturing cost.

[0011] In displaying an image, the organic light emitting display device uses a top emission scheme or a bottom emission scheme according to the structure of the organic light emitting display device. In the bottom emission scheme, a visible light generated in an organic light emitting layer is displayed toward the lower side of a substrate having a transistor disposed thereon. In contrast, in the top emission scheme, the visible light generated in the organic light emitting layer is displayed toward the upper side of the substrate having a transistor disposed thereon.

[0012] In such an organic light emitting display device, sub-pixels including organic light emitting diodes are arranged in a matrix form and brightness of selected sub-pixels by a scan signal is controlled depending on gradation of data. Further, the organic light emitting display device is a self-light emitting device, and thus has a lower power consumption, a high response speed, a high light-emitting efficiency, a high luminance, and a wide viewing angle.

[0013] Meanwhile, a set apparatus or finished product including such a display device as described above may include, for example, a television (TV), a computer monitor, and an advertising panel.

[0014] Such a display device or set apparatus includes a sound output device, such as a speaker, for generating and outputting sound relating to an image.

[0015] It is general that a company which manufactures a display device, such as a liquid crystal display device or an organic light emitting diode display device, manufactures only a display panel or display device, while another company which manufactures a speaker assembles the speaker with the manufactured display device, so as to finally complete a set apparatus capable of outputting an image and sound.

[0016] FIG. 1 is a schematic plan view of a speaker included in a conventional display device.

[0017] As shown in FIG. 1, the conventional display device 1 or set apparatus includes a speaker 2 disposed at a rear or lower part of a display panel thereof.

[0018] In this structure, the sound generated by the speaker 2 does not progress toward a viewer, who is viewing an image from the front side of the display device 1, but progresses toward the rear side or the underside of the display panel rather than the display panel on which the image is being displayed. Therefore, the sound may disturb the viewer's immersion.

[0019] Further, when the sound generated from the speaker 2 progresses toward the rear side or underside of the display panel, the sound quality may be degraded due to an interference with sound reflected by a wall or floor.

[0020] Also, the sound generated by a speaker included in the conventional display device is not oriented toward a viewer of the display device and may thus undergo diffraction, which degrades the sound localization. Moreover, in configuring a set apparatus, such as a TV, a speaker may occupy a predetermined space, which imposes a restriction on the design and spatial disposition of the set apparatus.

[0021] Therefore, there has been an increasing requirement for a technology which can improve the quality of sound output from a display device and prevent the viewer's immersion from being disturbed.

SUMMARY OF THE INVENTION

[0022] The present disclosure has been made to overcome the above-mentioned problems of the prior arts and, in one aspect, is to provide a panel vibration type sound generating display device, which can generate sound by directly vibrating a display panel of the display device.

[0023] In another aspect, the present disclosure is to provide a display device using an organic light emitting display panel, in which the display panel is directly vibrated to generate sound without large degradation in the image output characteristic and the sound generating actuator can be easily arranged.

[0024] In another aspect, the present disclosure is to provide an organic light emitting display device, which directly vibrates a bottom emission type organic light emitting display panel, which has the smaller influence by the panel vibration among the top emission type organic light emitting display panel and the bottom emis-

sion type organic light emitting display panel, to generate sound.

[0025] In another aspect, the present disclosure is to provide an organic light emitting display device including a panel vibration type sound generating apparatus, which has a support hole formed through a support part of the organic light emitting display device and a sound generating actuator inserted in and fixed to the support hole, so that the display device has a reduced thickness while having an excellent sound generation performance. The support part may also be termed a support member or support structure.

[0026] In another aspect, the present disclosure is to provide an organic light emitting display device, which includes a sound generating baffle part coupled to the the organic light emitting display panel and a support structure thereof to form an air gap for transferring of sound at an edge of a predetermined area including a sound generating actuator.

[0027] In view of the above aspects, an organic light emitting display device according to an embodiment of the present disclosure may include: an organic light emitting display panel including a light emitting layer including an organic light emitting material layer and an encapsulation layer disposed at one side of the light emitting layer; and a sound generating actuator in direct contact with the organic light emitting display panel to vibrate the organic light emitting display panel to generate sound.

[0028] The organic light emitting display panel is a bottom emission type organic light emitting display panel in which light of the organic light emitting material layer is emitted through the substrate. Further, based on a definition that a surface through which light of the organic light emitting display panel is emitted is an image displaying plane, the light emitting layer and the encapsulation layer may be sequentially laminated under the image displaying plane, and the sound generating actuator may be disposed to be in contact with the encapsulation layer.

[0029] The encapsulation layer in contact with the sound generating actuator may be a metal thin film layer having a second thickness of 0.05 to 0.2 mm.

[0030] The light emitting layer of the organic light emitting display panel may employ an R-G-B organic light emitting material layer configured to output lights of red, green, and blue without a separate color filter or may include a white organic light emitting material layer and a color filter layer disposed on the white organic light emitting material layer.

[0031] The display device may further include a support part, such as a cover bottom, configured to cover and support at least a rear surface of the organic light emitting display panel, wherein the sound generating actuator is inserted in and fixed to a support hole formed at the cover bottom.

[0032] The sound generating actuator may include: a plate inserted in the support hole; a magnet disposed on the plate; a center pole disposed at a center of the plate;

a bobbin disposed to surround the center pole and be in contact with the display panel; and a coil wound around the bobbin. The plate may be a lower plate, for example.

[0033] The lower plate of the sound generating actuator further includes an extension part extending outward, and the extension part may be fixed to the lower surface of the cover bottom through a bolt, a PEM™ nut, or an adhesive member.

[0034] An air gap is formed between the organic light emitting display panel and the support part, and the display device may further include a baffle part including an adhesive member and a sealing part arranged between the lower surface of the display panel and the upper surface of the support member at an edge of the air gap.

[0035] An embodiment of the present disclosure as described above can provide a panel vibration type sound generating display device, which generates sound by directly vibrating a display panel.

[0036] Further, among various types of organic light emitting display panels, the organic light emitting display panel formed by simply attaching multiple layers or substrates can minimize the degradation of the image output characteristic in spite of direct vibration of the display panel for the sound generation.

[0037] Moreover, among the top emission scheme and bottom emission scheme for the light emitting, the disclosed organic light emitting display device employs the bottom emission scheme in which the encapsulation layer having no light emitting device is in direct contact with the sound generating actuator, and thus can minimize the degradation of the image quality by vibration of the light emitting device at the time of vibration of the display panel for the sound generation.

[0038] Also, a support hole is formed through a support part of the organic light emitting display device and the sound generating actuator is inserted in and fixed to the support hole. Therefore, the organic light emitting display device has an excellent sound generation performance while having a reduced thickness.

[0039] In addition, the display device includes a sound generating baffle part coupled to the organic light emitting display panel and a support structure thereof at an edge of an air gap for transferring of sound, which enhances sealing of the air gap and thus can enhance the sound output characteristic and prevent sound leakage.

[0040] Disclosed herein is an organic light emitting display device comprising: an organic light emitting display panel including a light emitting layer and an encapsulation layer disposed at one side of the light emitting layer, the light emitting layer including a substrate, a plurality of thin film transistors arranged on the substrate, and an organic light emitting material layer to emit light between two electrode layers disposed at one side of the thin film transistors; and a sound generating actuator disposed to be in contact with one surface of the organic light emitting display panel and configured to vibrate the organic light emitting display panel to generate sound.

[0041] The organic light emitting display panel of the

organic light emitting display device may be a bottom emission type organic light emitting display panel in which light of the organic light emitting material layer is emitted through the substrate.

[0042] The light emitting layer and the encapsulation layer of the organic light emitting display device may be sequentially laminated under the image displaying plane, and the sound generating actuator disposed to be in contact with the encapsulation layer, based on a definition that a surface through which light of the organic light emitting display panel is emitted is an image displaying plane.

[0043] The light emitting layer of the organic light emitting display device may comprise the substrate, the thin film transistors, and the organic light emitting material layer, which are sequentially arranged under the image displaying plane, the polarization layer being further disposed on the substrate.

[0044] The encapsulation layer of the organic light emitting display device may be a metal thin film layer having a second thickness of 0.05 to 0.2 mm.

[0045] The organic light emitting material layer of the organic light emitting display device may be a white organic light emitting material layer configured to emit white light, and the light emitting layer may further comprise a color filter layer disposed on the white organic light emitting material layer.

[0046] The organic light emitting display device may further comprise a support part configured to cover and support at least a rear surface of the organic light emitting display panel, wherein the sound generating actuator is inserted in a support hole disposed at the support part to be fixed to the support part.

[0047] The sound generating actuator of the organic light emitting display device may comprise: a lower plate inserted in the support hole; a magnet disposed on the lower plate; a center pole disposed at a center of the lower plate; a bobbin disposed to surround the center pole and be in contact with the organic light emitting display panel; and a coil wound around the bobbin.

[0048] The support part of the organic light emitting display device may be a cover bottom, the lower plate further including an extension part extending outward, the extension part being fixed to a lower surface of the cover bottom.

[0049] The organic light emitting display device may further comprise a baffle part disposed between the support part and the one surface of the organic light emitting display panel to define an air gap, which is a space in which the display panel can be vibrated by the sound generating actuator.

[0050] The baffle part of the organic light emitting display device may be disposed at an edge of the air gap and comprise an adhesive member attached to the lower surface of the organic light emitting display panel and the upper surface of the support part, and a sealing part disposed outside the adhesive member.

[0051] The sealing member of the organic light emitting display device may have a thickness larger than the thick-

ness of the adhesive member.

BRIEF DESCRIPTION OF THE DRAWINGS

[0052] The above and other objects, features and advantages of the present invention will be more apparent from the following detailed description taken in conjunction with the accompanying drawings, in which:

FIG. 1 is a schematic plan view of a speaker included in a conventional display device;

FIGs. 2A to 2C are schematic views of a display device including a panel vibration type sound generating apparatus according to an embodiment of the present disclosure wherein FIG. 2A is a plan view, and FIGs. 2B and 2C are sectional views;

FIGs. 3A and 3B are sectional views of a liquid crystal display device including a backlight unit;

FIG. 4 illustrates a case in which a sound generating actuator according to an embodiment of the present disclosure is installed in a liquid crystal display device;

FIG. 5 is a cross-sectional view of an organic light emitting display panel used in a display device according to an embodiment of the present disclosure;

FIG. 6 is a sectional view of a top emission type organic light emitting display panel in which light is emitted toward a Thin Film Transistor (TFT) with reference to a substrate of a light emitting layer thereof; FIGs. 7A and 7B are sectional views of a bottom emission type organic light emitting display panel applicable to a display device according to an embodiment of the present disclosure, wherein FIG. 7A illustrates a case of employing color-specific organic light emitting layers and FIG. 7B illustrates a case of using a white organic light emitting layer and a color filter layer;

FIG. 8 is a detailed sectional view illustrating a lamination structure of a bottom emission type organic light emitting display panel used in embodiments of the present disclosure;

FIGs. 9A and 9B are sectional views of two types of sound generating actuators used according to embodiments of the present disclosure;

FIGs. 10A and 10B illustrate a state in which a sound generating actuator according to an embodiment of the present disclosure vibrates a display panel to generate sound;

FIGs. 11A and 11B illustrate an example of a coupling state between a sound generating actuator according to an embodiment of the present disclosure and a cover bottom, which is a supporting structure of a display device;

FIGs. 12A and 12B illustrate other embodiments of a coupling state between a sound generating actuator and a cover bottom;

FIG. 13 illustrates a case in which an air gap configured to receive generated sound is limited by an ex-

ternal frame of the sound generating actuator;

FIGs. 14A to 14C illustrate an example of a baffle part according to the present embodiment, formed between a display panel and a middle cabinet, which is one of structures for supporting the display panel, in order to form a sound transferring air gap between the display panel, which serves as a vibrating plate, and a cover bottom; and

FIG. 15 is a graph illustrating a sound output characteristic in the case of using a panel vibration type sound generating apparatus according to the present embodiment, in comparison with a conventional speaker.

5

10

15

20

25

30

35

40

45

50

55

DETAILED DESCRIPTION OF THE EXEMPLARY EMBODIMENTS

[0053] Hereinafter, embodiments of the present disclosure will be described with reference to the accompanying drawings. In assigning reference numerals to elements in the drawings, the same elements will be designated by the same reference numerals as far as possible although they are illustrated in different drawings. Further, in the following description of the present invention, a detailed description of known functions and configurations incorporated herein will be omitted when it may make the subject matter of the present invention rather unclear.

[0054] In addition, terms, such as first, second, A, B, (a), (b) or the like may be used herein in describing elements of the present invention. Each of these terminologies is not used to define an essence, order or sequence of a corresponding component but used merely to distinguish the corresponding component from other component(s). In the case that it is described that a certain element "is connected to", "is coupled to", or "is connected with" another element, it should be understood that not only the certain element can be directly connected or coupled to the another element, but also an additional element may be "interposed" between the elements or the elements may be connected or coupled to each other through an additional element.

[0055] FIGs. 2A to 2C are schematic views of a display device including a panel vibration type sound generating apparatus according to the present embodiment, wherein FIG. 2A is a plan view and FIGs. 2B and 2C are sectional views.

[0056] As shown in FIGs. 2A to 2C, a display device according to the present embodiment includes a display panel 100 configured to display an image, and a sound generating actuator 200 which is attached to a surface of the display panel and vibrates the display panel to generate sound.

[0057] A display device according to the present disclosure, which is described below in more detail with reference to FIGs. 4 to 7B, is a device having a sound generating actuator 200 attached to a display panel 100 to directly vibrate the display panel 100 and thus generates

sound by the vibration. In this configuration, an organic light emitting display panel is used as the display panel 100.

[0058] The display panel 100 used in the present embodiment is a display panel directly vibrated by the sound generating actuator 200 to generate sound, includes in principle all types of display panels including a liquid crystal display panel, an Organic Light Emitting Diode (OLED) display panel, and a Plasma Display Panel (PDP), and is not limited to a specific display panel, as long as the display panel is directly vibrated by the sound generating actuator 200 to generate sound wave.

[0059] However, when the display panel is a liquid crystal display panel, the display panel has many laminated layers and requires an indirect light source type back-light having a separate light source disposed therein. Therefore, it is difficult to install the sound generating actuator 200. Moreover, when the liquid crystal display panel is directly vibrated, the directivity of the liquid crystal material may be shaken and thus cause distortion of an image.

[0060] In contrast, in the case of the organic light emitting display panel, since the organic light emitting element used therein is a self light-emitting element, the organic light emitting display panel does not require a separate light source and has one panel in which multiple layers including a polarization layer, a glass substrate, and an encapsulation layer are integrated. Therefore, even when the OLED display panel is directly vibrated by the sound generating actuator 200, the vibration has nearly no influence on the light emitting property of the organic light emitting layer and thus causes no image distortion.

[0061] A display device according to the present embodiment has a feature of using the organic light emitting display panel 100 as a display panel, which is described below in detail with reference to FIGs. 3A to 5.

[0062] Especially, the organic light emitting display panel employs a top emission scheme in which light is emitted toward a Thin Film Transistor (TFT) disposed on a glass substrate of a light emitting panel layer with reference to a position of the glass substrate or a bottom emission scheme in which the light is emitted in the opposite direction thereof.

[0063] Among the top emission and bottom emission schemes described above, a display panel of the present embodiment employs the bottom emission scheme, which can reduce the degradation of the screen quality by the direct vibration of the panel and can reduce the thickness and weight of the entire panel to enable the panel to have an excellent sound generating characteristic by vibration, which is described below in detail with reference to FIGs. 6 to 8.

[0064] FIGs. 3A and 3B are sectional views of liquid crystal display devices each including a backlight unit and FIG. 4 illustrates a liquid crystal display device in which a sound generating actuator according to an embodiment of the present disclosure is installed.

[0065] FIGs. 3A and 3B are sectional views of liquid crystal display devices having two types of backlight units, wherein an edge type backlight unit is used in FIG. 3A and a direct type backlight unit is used in FIG. 3B.

[0066] The liquid crystal display device including the backlight unit as shown in FIGs. 3A and 3B includes: a liquid crystal display panel 140; a back light unit 120 or 160 disposed thereunder to irradiate light onto the display panel 140; and a cover bottom 110 which supports the back light unit, extends on the entirety of the rear surface of the display device, and is made of metal or plastic.

[0067] The liquid crystal display device may further include: a guide panel 130 configured to support a light source housing 127 of the backlight unit at one side surface thereof and the display panel 140 at the top thereof; and a case top 150 configured to surround a side surface of the cover bottom or guide panel and extend to a part of the front surface of the display panel.

[0068] The liquid crystal display device described above includes a backlight unit for providing light to the display panel, and the backlight unit may be divided into an edge type backlight unit and a direct type backlight unit according to the arrangement of the light source and the transfer type of light.

[0069] The edge-type backlight unit 120 as shown in FIG. 3A may include: a light source 128, such as an LED, and a light source module 127, which are arranged at one side of the display device, the light source module including a holder or housing configured to fix the light source, a light source driving circuit, etc.; a Light Guide Plate (LGP) 124 configured to diffuse light to the entire panel area; a reflection plate 122 configured to reflect light toward the display panel; and at least one optical sheet 126 disposed on the light guide plate to improve the luminance, diffuse the light, and protect the light guide plate.

[0070] In the edge-type backlight unit, light from the light source enters, is spread over the entire surface of the display device through total reflection thereof by the light guide plate, and then exits toward the display panel.

[0071] As shown in FIG. 3B, the direct type backlight unit 160 may include a light source PCB 161 disposed on a cover bottom 110, a diffusion plate 165 disposed above and spaced a predetermined distance apart from the light source PCB to diffuse the light, at least one optical sheet 166 disposed on the diffusion plate, and a plurality of Diffusion Plate Supports (DPSs) 164 arranged on the light source PCB 161 to prevent a deflection of the diffusion plate.

[0072] The light source PCB 161 is disposed on the entire surface of the display device, and a plurality of LED chips 162, which are light sources, and light diffusion lenses 163 configured to diffuse light from the light sources are arranged on the light source PCB.

[0073] The liquid crystal display panel 140 used in the liquid crystal display device includes: a plurality of gate lines; a plurality of data lines; pixels defined at intersecting areas between the gate lines and data lines; an array

substrate including a thin-film transistor, which is a switching device configured to adjust a light transmission degree at each pixel; an upper substrate including a color filter and/or a black matrix, etc.; and a liquid crystal material layer disposed between a pixel electrode and a common electrode.

[0074] In the liquid crystal display panel, when a predetermined electric field is established between the pixel electrode and the common electrode by a switching of a thin film transistor, the liquid crystal material layer comes to have a predetermined alignment characteristic according to the electric field and thus has a changed transmittance to display an image.

[0075] Therefore, as shown in FIG. 4, when the liquid crystal display panel is directly vibrated by a sound generating actuator to generate sound, the alignment of the liquid crystal material may shake to change the transmittance of the pixels and thus distort an image.

[0076] Further, as shown in FIG. 4, when a liquid crystal display device has a sound generating actuator 200 mounted therein, the sound generating actuator should extend through or be installed on a part of the backlight unit 120.

[0077] As a result, the light may not be transferred to a pixel or pixels arranged above the area through or on which the sound generating actuator is disposed, so that a certain shadow zone is generated.

[0078] In the structure as described above in which an actuator is directly attached to the display panel, the use of liquid display panel to generate sound may degrade the image output characteristic.

[0079] Therefore, in a display device according to an embodiment of the present disclosure, the display panel to which the sound generating actuator is directly attached is limited to an organic light emitting display panel.

[0080] FIG. 5 is a cross-sectional view of an organic light emitting display panel used in a display device according to an embodiment of the present disclosure.

[0081] As shown in FIGs. 2A to 2C, an organic light emitting display device according to an embodiment of the present disclosure includes, in large, an organic light emitting display panel 100 and a sound generating actuator 200 which is attached to a surface of the organic light emitting display panel 100 and vibrates the organic light emitting display panel 100 to generate sound.

[0082] The organic light emitting display panel 100 used in the present embodiment may include: a light emitting layer including a substrate, a plurality of thin film transistors arranged on the substrate, and an organic light emitting material layer disposed at one side of the thin film transistors to emit light between two electrode layers; and an encapsulation layer disposed at one side of the light emitting layer.

[0083] The organic light emitting display panel according to the present embodiment may be divided into a top emission type panel and a bottom emission type panel according to the direction in which the light from the organic light emitting material layer progresses.

[0084] In brief, in the top emission type organic light emitting display panel, the light generated in the organic light emitting material layer progresses upward, which is opposite to the substrate of the light emitting layer, and one surface, which is opposite to the substrate, serves as an image displaying plane.

[0085] In contrast, in the bottom emission type organic light emitting display panel, the light generated in the organic light emitting material layer progresses toward the substrate of the light emitting layer and is emitted through the substrate, and the outer surface the substrate of the light emitting layer serves as an image displaying plane.

[0086] In embodiments of the present disclosure, it may be more advantageous to use the bottom emission type organic light emitting display panel between the two types of organic light emitting display panels, which is described hereinafter in detail with reference to FIGs. 6 to 8.

[0087] FIG. 6 is a sectional view of a top emission type organic light emitting display panel in which light is emitted toward a Thin Film Transistor (TFT) with reference to a substrate of a light emitting layer thereof.

[0088] As shown in FIG. 6, the top emission type organic light emitting display panel 1100 may include a light emitting layer 1180 and an encapsulation layer 1190 disposed at one side of the light emitting layer to protect the light emitting layer.

[0089] The light emitting layer 1180 is an array substrate including a self-emissive organic light emitting material layer, and is formed by sequentially laminating a glass substrate 1182, a TFT layer 1184 including a plurality of TFTs arranged on the glass substrate 1182; and an organic light emitting material layer 1186 disposed at one side of the TFT layer.

[0090] Although not illustrated, a first electrode (anode or cathode) and a second electrode (cathode or anode), which are connected to a source or drain electrode of a TFT, are arranged, and the organic light emitting material layer is disposed between the two electrode layers.

[0091] According to an electric potential difference generated between the two electrodes by a switching operation of the TFT, the organic light emitting device emits light through self-emission.

[0092] From among the two side surfaces of the light emitting layer, the side at which the glass substrate is disposed is protected by the glass substrate from introduction of external moisture or alien materials. However, the side opposite to the glass substrate, that is, the side at which the organic light emitting display layer is disposed, needs to be protected from external moisture or alien materials, which may be introduced thereinto.

[0093] The encapsulation layer 1190 is a protective layer used for this purpose, and is attached to the upper surface of the organic light emitting material layer of the light emitting layer to prevent the organic light emitting device from being damaged.

[0094] In the present specification, the encapsulation layer is not limited to the term thereof, should be con-

strued to include all types of protective layers arranged to protect an organic light emitting material layer of a light emitting layer of an organic light emitting display panel, and may be expressed by another term, such as a protective layer, a second substrate layer, etc.

[0095] In the top emission type panel as illustrated in FIG. 6, the light is emitted in a direction opposite to the glass substrate 1182 of the light emitting layer and an image displaying plane is placed in the direction, and the encapsulation layer 1190 is disposed in the direction of the image displaying plane, that is, the encapsulation layer 1190 is disposed directly on the outer surface of the organic light emitting material layer 1186.

[0096] The sound generating actuator 200 is attached to the glass substrate 1182 of the light emitting layer 1180, which is the opposite side to the image displaying plane.

[0097] In the top emission type panel, the organic light emitting material layer 1186 including light emitting devices of various colors including R, G, and B is disposed directly under the image displaying plane, wherein two colors may be mixed when the display device is viewed in a wide viewing angle.

[0098] That is, as shown in FIG. 6, since an organic light emitting material layer of R, G, and B is disposed adjacent to the image displaying plane, a color-mixture zone A formed by mixing of two colors may be observed between the red R and the green G in a view of a wide viewing angle.

[0099] Therefore, when a sound generating actuator according to the present embodiment is applied to the top emission type organic light emitting display panel, the vibration of the organic light emitting display panel may intensify the color mixing as described above, which may thereby degrade the screen quality.

[0100] Further, as shown in FIG. 6, in the top emission type panel, the encapsulation layer 1190 is disposed at the side of the image displaying plane. Therefore, the encapsulation layer 1190 is required to be transparent and is thus required to be made of a glass material, etc.

[0101] Also, in the top emission type panel, the encapsulation layer 1190 serves as the image displaying plane exposed to a viewer and is thus required to have a predetermined strength or higher to be robust against an external impact, etc.

[0102] Therefore, in the top emission type panel, the encapsulation layer 1190 should be formed as a glass layer having a first thickness T1, which is relatively thick. In a large TV, etc., the first thickness T1 of the encapsulation layer 1190 is required to have a value of at least about 1 mm.

[0103] In an embodiment of the present disclosure, a sound generating actuator uses a display panel as a vibration plate and directly vibrates the display panel to generate sound. Therefore, when the display panel is thick or heavy, it is difficult for the actuator to vibrate the display panel, which may result in degradation of sound implementation performance, or reduction in the sound

output which can be made by the same actuator.

[0104] In consideration of such disadvantages of the top emission type organic light emitting display panel, an embodiment of the present disclosure uses a bottom emission type organic light emitting display panel, which is described below in detail.

[0105] FIGs. 7A and 7B are sectional views of a bottom emission type organic light emitting display panel applicable to a display device according to an embodiment of the present disclosure, wherein FIG. 7A illustrates a case of employing color-specific glass light emitting layers and FIG. 7B illustrates a case of using a White Organic Light Emitting Device (WOLED) layer and a color filter layer, and the following description discusses FIG. 7A as a representative.

[0106] It is recommended that an organic light emitting display panel used in an organic light emitting display device according to an embodiment of the present disclosure be a bottom emission type organic light emitting display panel in which light from an organic light emitting material layer is emitted through a substrate of a light emitting layer.

[0107] As shown in FIGs. 7A and 7B, the organic light emitting display panel 1200 of the organic light emitting display device according to an embodiment of the present disclosure may include an encapsulation layer 1290 to which a sound generating actuator is attached, a light emitting layer 1280 disposed on the encapsulation layer, and a polarization layer 1270 disposed on the light emitting layer.

[0108] The light emitting layer 1280 is an array substrate including a self-emissive organic light emitting material layer, and is formed by sequentially laminating a substrate 1211 made of glass, a TFT layer 1214 including a plurality of TFTs arranged on the glass substrate 1211; and an organic light emitting material layer 1219 disposed at one side of the TFT layer.

[0109] As described in more detail with reference to FIG. 8, a first electrode (anode or cathode) and a second electrode (cathode or anode), which are connected to a source or drain electrode of a TFT, are arranged, and the organic light emitting material layer 1219 is disposed between the two electrode layers.

[0110] According to an electric potential difference generated between the two electrodes by a switching operation of the TFT, the organic light emitting device emits light through self-emission.

[0111] In this event, one surface of the polarization layer 1270 serves as the image displaying plane on which an image is displayed, and the polarization layer 1270, the light emitting layer 1280, and the encapsulation layer 1290 are sequentially arranged under the image displaying plane. In some cases, the polarization layer 1270 may be omitted.

[0112] FIG. 7A illustrates a structure in which the light emitting material layer 1219 of the light emitting layer 1280 without a separate color filter is configured by organic light emitting materials outputting lights of corre-

sponding colors (R, G, and B), respectively, and FIG. 7B illustrates a structure in which the organic light emitting material layer is a white light emitting material layer 1264 configured to emit a white light and a color filter layer 1248 is disposed on the white organic light emitting material layer.

[0113] In the bottom emission type organic light emitting display panel 1200 as shown in FIGs. 7A and 7B, the light emitting layer 1280 includes a substrate 1211, a thin film transistor layer 1214, and an organic light emitting material layer 1219, which are sequentially arranged under the image displaying plane.

[0114] In this structure, light emitted from the organic light emitting material layer progresses through the thin film transistor layer 1214 and the substrate 1211. Therefore, on a premise that the substrate 1211 is at the lower side (bottom side), the illustrated panels are expressed as bottom emission type panels in which the light is emitted toward the substrate (bottom).

[0115] In the bottom emission type organic light emitting display panel 1200, the encapsulation layer 1290 is disposed adjacently to the organic light emitting material layer 1219 in order to protect the organic light emitting material layer 1219.

[0116] Therefore, although the encapsulation layer 1190 is disposed at the side of the image displaying plane in the top emission type panel (see FIG. 6), the encapsulation layer 1290 is disposed at the side opposite to the image displaying plane and the sound generating actuator 200 is attached to the encapsulation layer 1290 in the bottom emission type panel as shown in FIGs. 7A and 7B.

[0117] In the bottom emission type panel as shown in FIGs. 7A and 7B, since the encapsulation layer 1290 is disposed at the side opposite to the image displaying plane, the encapsulation layer 1290 is not required to be made from a transparent material and does not require rigidity large enough to provide protection from an external impact.

[0118] That is, in the bottom emission type panel, it is enough for the encapsulation layer 1290 to have a function of blocking moisture or alien materials just as an organic light emitting material layer of the light emitting layer 1280.

[0119] Therefore, the encapsulation layer 1290 of the organic light emitting display panel according to the present embodiment may be implemented by a metal thin film having a second thickness T2 smaller than the first thickness T1 of the encapsulation layer 1190 of the top emission type panel.

[0120] Actually, the second thickness of the encapsulation layer 1290 of the organic light emitting display panel according to the present embodiment may have a value of about 0.05 to 0.2 mm.

[0121] The material of the encapsulation layer 1290 of the organic light emitting display panel according to the present embodiment is not limited to metal and may include all materials by which the organic light emitting ma-

terial layer can be protected and can be configured as a thin film.

[0122] However, in order to prevent hydrogen or oxygen from coming into the organic light emitting material layer 1219 and oxidizing the organic light emitting device, the encapsulation layer 1290 may be made of an iron-nickel alloy preventing permeation of hydrogen or oxygen, a so-called Invar™ metal material.

[0123] Further, the encapsulation layer 1290 may be made of a metal material having a predetermined reflection property or higher.

[0124] As shown in FIGs. 7A and 7B, the light emitted from the organic light emitting material layer 1219 should be output to the image displaying plane which is opposite to the encapsulation layer 1290. Therefore, when the encapsulation layer 1290 is made of a metal material having a predetermined reflection property or higher, the encapsulation layer 1290 has a kind of reflection plate function, which can improve the optical efficiency of the display panel.

[0125] The bottom emission type organic light emitting display panel according to embodiments of the present disclosure as shown in FIGs. 7A and 7B has the organic light emitting material layer 1219, which is disposed at a position far from the image displaying plane, and thus can minimize the color mixing phenomenon in a large viewing angle as described above with reference to FIG. 6. Especially, the bottom emission type organic light emitting display panel is more advantageous than the top emission type organic light emitting display panel in that the former has nearly no observed color mixing phenomenon even when the display panel is vibrated to generate sound.

[0126] Further, the bottom emission type organic light emitting display panel according to embodiments of the present disclosure can reduce the thickness of the encapsulation layer, in comparison with the top emission type panel as shown in FIG. 6.

[0127] In result, by the reduction in the thickness and weight of the display panel which should be vibrated to generate sound, the bottom emission type organic light emitting display panel allows the sound generating actuator to easily generate the vibration, has an improved sound reproduction performance in comparison with the top emission type panel, and can increase the sound output on a condition of the same actuator.

[0128] Meanwhile, differently from FIG. 7A employing a color-specific glass light emitting layer, FIG. 7B illustrates a panel in which the organic light emitting material layer is a White Organic Light Emitting Device (WOLED) layer 1264 emitting a white light and a color filter layer 1248 is disposed on the WOLED layer.

[0129] Since the optical efficiency of a white organic light emitting device is usually better than that of other color-specific organic light emitting devices, the structure as shown in FIG. 7B can further improve the optical efficiency of the organic light emitting display device.

[0130] As described above, use of an organic light

emitting display panel other than a liquid crystal display panel as a display panel in providing a display device which directly vibrates the display panel to generate sound facilitates the arrangement of the sound generating actuator and can prevent the sound generating actuator from degrading the screen quality.

[0131] Especially, among various types of organic light emitting display panels, the bottom emission type organic light emitting display panel can prevent generation of a weighted color mixing phenomenon in a wide viewing angle at the time of panel vibration and can reduce the thickness or weight of the panel to thereby enhance the sound generation characteristic.

[0132] FIG. 8 is a detailed sectional view illustrating a lamination structure of a bottom emission type organic light emitting display panel used in embodiments of the present disclosure.

[0133] For convenience of description, In FIG. 8, the light emitting direction or the image displaying plane is oriented downward in the drawing on the contrary to FIG. 7.

[0134] As shown in FIG. 8, the polarization layer 1270 is disposed on the image displaying plane, a light emitting layer 1280 is laminated on and in contact with the polarization layer, and an encapsulation layer 1290 is disposed on one surface of the light emitting layer 1280. The sound generating actuator 200 is attached to the encapsulation layer 1290.

[0135] Hereinafter, elements of the light emitting layer 1280 of the bottom emission type organic light emitting display panel according to the present embodiment are described in detail.

[0136] On a substrate 1211 of the light emitting layer 1280, a buffer layer 1220, a light blocking layer 1222, a first interlayer insulation film 1224, a semiconductor layer 1226, a gate insulation film 1228, a gate electrode 1230, a second interlayer insulation film 1232, a source electrode 1242, a drain electrode 1244, a third interlayer insulation film 1246, a color filter 1248, a planarization layer 1250, a first electrode 1260, a bank 1262, an organic light emitting material layer 1264, a second electrode 1266, and a passivation layer 1268 may be arranged.

[0137] The substrate 1211 of the light emitting layer 1280 may be a glass substrate without being limited thereto, and may be a plastic substrate including polyethylene terephthalate (PET), polyethylene naphthalate (PEN), and polyimide.

[0138] The buffer layer 1220 is a layer for blocking permeation of alien material into the substrate 1211 or improving the interface characteristic or the degree of flatness, and may be configured as a single layer or multiple layers made of silicon nitride (SiNx) or silicon oxide (SiOx).

[0139] The light blocking layer 1222 is a layer for blocking light incident to a channel area of the semiconductor layer 1226. To this end, the light blocking layer may be configured as a metal layer which is opaque to block the light. Further, the light blocking layer 1222 may be elec-

trically connected to the drain electrode 1244 to prevent generation of a parasitic capacitance.

[0140] The first interlayer insulation film 1224 insulates the light blocking layer 1222 and the semiconductor layer 1226 from each other. This first interlayer insulation film 1224 includes an insulating material and may be laminated on the buffer layer 1220 and the light blocking layer 1222.

[0141] The semiconductor layer 1226 includes silicon (Si) and is disposed on the first interlayer insulation film 1224, and may include an active area establishing a channel, and a source area and a drain area, which are arranged at both sides of the active area and doped with impurities of a high concentration.

[0142] The gate insulation film 1228 insulates the semiconductor layer 1226 and the gate electrode 1230 from each other. The gate insulation film 1228 includes an insulating material and may be laminated on the semiconductor layer 1226.

[0143] The gate electrode 1230 is disposed on the gate insulation film 1228 and receives a gate voltage supplied from a gate line.

[0144] The second interlayer insulation film 1232 protects the gate electrode 1230 and insulates the gate electrode 1230, the source electrode 1242, and the drain electrode 1244 from one another. This second interlayer insulation film 1232 includes an insulating material and may be laminated on the first interlayer insulation film 1224, the semiconductor layer 1226, and the gate electrode 1230.

[0145] The source electrode 1242 and the drain electrode 1244 are disposed on the second interlayer insulation film 1232 and are in contact with the semiconductor layer 1226 through a first contact hole and a second contact hole formed through the second interlayer insulation film 1232. The drain electrode 1244 is in contact with the light blocking layer 1222 through a third contact hole.

[0146] The source electrode 1242 and the drain electrode 1244, the semiconductor layer 1226 in contact with these electrodes, the gate insulation film 1228 and the gate electrode 1230 disposed on the semiconductor layer 1226 may configure the thin film transistor layer 1214.

[0147] The third interlayer insulation film 1246 protects the source electrode 1242 and the drain electrode 1244.

[0148] The color filter 1248 may be placed on a position overlapping the organic light emitting material layer 1264 on the second interlayer insulation film 1232 in order to change the color of light emitted toward the substrate 1211 in the bottom emission type panel.

[0149] The planarization layer 1250 may protect the source electrode 1242 and the drain electrode 1244 and may planarize the surface on which the first electrode 1260 is disposed.

[0150] The first electrode 1260 is disposed on the planarization layer 1250 and is in contact with the drain electrode 1244 through a fourth contact hole formed through the planarization layer 1250. The first electrode 1260 functions as an anode electrode, and has a rela-

tively large work function value and may be made of a transparent conductive material to allow the light generated in the organic light emitting material layer 1264 to pass therethrough.

[0151] For example, the first electrode 1260 may be made from a metallic oxide such as Indium Tin Oxide (ITO) or Indium Zinc Oxide (IZO), a compound of a metal and an oxide such as ZnO:Al or SnO₂:Sb, a conductive polymer such as poly(3-methylthiophen), poly[3,4-(ethylen-1,2-dioxy)thiophen](PEDT), polypyrrole, and polyaniline, and the like. Further, the first electrode 1260 may be made of Carbon Nanotube (CNT), graphene, silver nano wire, etc.

[0152] The organic light emitting material layer 1264 is disposed on the first electrode 1260 and may be configured by a single layer made of a light emitting material or multiple layers including a hole injection layer, a hole transfer layer, a light emitting layer, an electron transfer layer, and an electron injection layer. This organic light emitting material layer 1264 may be a white light organic light emitting material layer configured to output white light, and may be applied over the entire surface without being patterned. The organic light emitting material layer 1264 does not require a patterning process and thus can simplify the process and reduce the cost.

[0153] The second electrode 1266 is disposed on the organic light emitting material layer 1264, is a cathode electrode (negative electrode), and may be made of a conductive material having a relatively small work function value. The second electrode 1266 may be configured by a single layer of a single metal including Ag or an alloy further including Mg at a predetermined proportion or multiple layers thereof, according to the bottom emission scheme.

[0154] The first electrode 1260 connected to the thin film transistor, the second electrode 1266 disposed to face the first electrode 1260, and the organic light emitting material layer 1264 disposed between the first electrode 1260 and the second electrode 1266 may be collectively referred to as an organic light emitting device.

[0155] When a predetermined voltage is applied between the first electrode 1260 and the second electrode 1266, a hole injected from the first electrode 1260 and an electron provided by the second electrode 1266 are transferred to the organic light emitting material layer 1264 to establish an exciton. Then, when the exciton is shifted from an excited state to a ground state, light is generated and is emitted in the form of visible rays.

[0156] The bank is disposed on an edge of the first electrode 1260 and may have an opening through which the first electrode 1260 is exposed. The bank may be made of an inorganic insulation material, such as SiO_x, SiN_x, or SiON.

[0157] The passivation layer 1268 protects the organic layer from moisture and oxygen and may have a multi-layer structure including an inorganic material, an organic material, and a mixture material thereof.

[0158] Each of the light blocking layer 1222, the gate

electrode 1230, the source electrode 1242, and the drain electrode 1244 may include a low reflective layer 1271 at an upper part thereof. The low reflective layer can prevent reflection of an external light, so as to prevent the occurrence of problems of visibility degradation, luminance decrease, degradation of contrast range characteristic, etc.

[0159] The low reflective layer 1271 may be formed of a material that absorbs external light introduced through the substrate 1211, or may be coated with a light absorbent. Here, the external light may refer to a non-polarized light which has not passed through a polarizing plate or a polarizing layer.

[0160] The material that absorbs external light may be formed of a metal that absorbs light, or an alloy thereof, and may have a black-based color. For example, the low reflective layer 1271 may be made of one of Mo, Cr, Ti, Nb, Mn, and Ta, or an alloy thereof. However, embodiments are not limited thereto, and may include another metal that absorbs light. Accordingly, the low reflective layer 1271 can prevent the external light from being reflected again to the outside.

[0161] Further, the low reflective layer 1271 is made of a metal oxide or an alloy of a metal absorbing light and a metal oxide, and thus can block light introduced from the outside. The low reflective layer 1271 may be made of a metal oxide, such as Indium Tin Oxide (ITO), Indium Zinc Oxide (IZO), or Indium Tin Zinc Oxide (ITZO), and the external light cannot go outside due to the destructive interference between the light reflected by a surface of the low reflective layer 1271 and the light having passed the low reflective layer 1271 and then reflected by an interface between the conductive layer and the low reflective layer 1271.

[0162] The organic light emitting display panel 1200 according to the present embodiment may further include a transmittance adjustment film (not illustrated) and/or transparent multi-layer film (not illustrated) disposed at one surface of the substrate 1211 to absorb light having a wavelength in a visible ray range.

[0163] The transmittance adjustment film absorbs the light entering the substrate 1211 from the outside and thus can greatly lower the reflectance of the substrate 1211 through absorption of external light with a predetermined transmittance ratio.

[0164] The transparent multi-layer film has a lamination structure including a plurality of refraction layers having different refractive ratios between adjacent layers, and removes the external light by destructive interference of lights reflected by refraction layers having various refractive ratios, so as to reduce the reflectance of the external light.

[0165] The transmittance adjustment film and/or transparent multi-layer film as described above may configure the polarization layer 1270 described above itself or a part thereof.

[0166] The sound generating actuator 200 according to the present embodiment, which is described below in

more detail with reference FIGs. 9A and 9B, includes a magnet, a plate supporting the magnet, a center pole protruding from a central area of the plate, and a bobbin disposed to surround the center pole and having a coil wound thereon, to which an electric current for generating sound is applied, wherein a distal end of the bobbin is attached to one surface of the display panel.

[0167] Further, as shown in FIGs. 2B and 2C, the organic light emitting display device according to the present embodiment may include a support part configured to support one or more among the rear surface or a side surface of the display panel, and the plate of the sound generating actuator is fixed to the support part.

[0168] The support part includes a cover bottom 300 disposed at the rear surface of the organic light emitting display panel 100, and may further include a middle cabinet 500 which is coupled to the cover bottom while surrounding the side surface of the organic light emitting display panel and receives and supports one side edge of the display panel.

[0169] The cover bottom of the support part may be a plate-shaped member made of metal or plastic extending over the entire rear surface of the display device.

[0170] It should be construed that the cover bottom 300 in the present disclosure is not limited to the term thereof but may be used as other expressions, such as a plate bottom, a back cover, a base frame, a metal frame, a metal chassis, a chassis base, or m-chassis, and has a concept including all types of frames or plate-shaped structures, which are arranged on the rear base part of the display device as supports for supporting the display panel.

[0171] The organic light emitting display device according to the present embodiment may further include a baffle part 400 configured to form an air gap, which is a space disposed between the organic light emitting display panel 100 and a support part, i.e., the cover bottom 300 or the middle cabinet 500, to transfer the generated sound wave.

[0172] That is, by sealingly coupling the organic light emitting display panel to the cover bottom 300 at an edge of the air gap 600, the air gap may be defined as an area sealed in all directions, and such a sealed air gap may be expressed as a baffle structure.

[0173] The baffle part 400 may include an adhesive member 412, which is disposed at an edge of the cover bottom or middle cabinet and is attached to the lower surface of the display panel, and a sealing part 414 disposed outside the adhesive member to reinforce the sealing of the air gap 600.

[0174] The adhesive member 412 may be configured by a double sided tape, it is preferred that the height of the sealing part 414 is higher than the height of the adhesive member 412 as described below in more detail with reference to FIGs. 7A to 7C.

[0175] FIGs. 9A and 9B are sectional views of two types of sound generating actuators used according to embodiments of the present disclosure.

[0176] A sound generating actuator 200 used in the present embodiment may include a magnet 220, which is a permanent magnet, plates 210 and 210' configured to support the magnet, a center pole 230 protruding from a central area of the plate 210, a bobbin 250 disposed to surround the center pole 230, and a coil 260 wound around the bobbin, wherein an electric current for generating sound is applied to the coil 260.

[0177] The sound generating actuator used in the present embodiment may include both a first structure in which the magnet is disposed outside the coil and a second structure in which the magnet is disposed inside the coil.

[0178] FIG. 9A illustrates the first structure having the magnet disposed outside the coil, which may be called a dynamic type or an external magnet type.

[0179] In the sound generating actuator of the first structure, the lower plate 210 is fixed to a support hole 310 formed at the cover bottom 300 and the magnet 220, which is a permanent magnet having an annular shape, is disposed outside the lower plate.

[0180] The upper plate 210' is disposed on the magnet 220, and an external frame 240 protruding from the upper plate is disposed outside the upper plate.

[0181] The center pole 230 protrudes from the central area of the lower plate 210 and the bobbin 250 surrounds the center pole 230.

[0182] The coil 260 is wound around a lower portion of the bobbin 250, and the electric current for generating sound is applied to the coil.

[0183] A damper 270 may be disposed between an upper part of the bobbin and the external frame 240.

[0184] The lower plate 210 and the upper plate 210' fix the sound generating actuator 200 to the cover bottom 300 while supporting the magnet 220, the lower plate 210 has a cylindrical shape as shown in FIG. 9A, the magnet 220 having a ring shape is disposed on the lower plate 210, and the upper plate 210' is disposed on the magnet.

[0185] As the lower plate 210 and the upper plate 210' are coupled to the cover bottom 300, the magnet 220 disposed between the lower plate 210 and the upper plate 210' can be fixedly supported.

[0186] The plate may be formed of a material having a magnetic property, such as ferrite Fe. The plate is not limited to the term thereof and may be expressed by another term, such as a yoke.

[0187] The center pole 230 and the lower plate 210 may be integrally formed.

[0188] The bobbin 250 is a cylindrical structure formed by a paper or aluminum sheet, and the coil 260 is wound around a predetermined lower area of the bobbin. A combination of the bobbin and the coil may be referred to as a voice coil.

[0189] When the electric current is applied to the coil, a magnetic field is formed around the coil. Then, due to an external magnetic field formed by the magnet 220, the entire bobbin moves upward while being guided by the center pole according to Fleming's Law.

[0190] Meanwhile, since the distal end of the bobbin 250 is attached to the rear surface of the organic light emitting display panel 100, the bobbin vibrates the organic light emitting display panel according to the applying or non-applying of the electric current, and such a vibration generates a sound wave.

[0191] An adhesive member 910 configured to attach the bobbin to the organic light emitting display panel 100 may be disposed on the distal end of the bobbin, and the adhesive member may be configured by a double-sided adhesive tape.

[0192] Although not illustrated, in addition to the adhesive member, at least one plate may be arranged on the distal end of the bobbin, and the plate may be integrally formed with the adhesive member 910. The plate transfers the vibration according to the movement of the bobbin to the display panel.

[0193] The plate may be made of plastic or metal. In order to discharge the heat generated in the bobbin and the sound generating actuator, the plate may be made of a metal material.

[0194] The magnet 220 may use a sintered magnet, such as a barium ferrite, and may use a cast magnet made from an alloy of ferric oxide (Fe₂O₃), barium carbonate (BaCO₃), strontium ferrite having an improved magnetic component, aluminum (Al), nickel (Ni), and cobalt (Co), without being limited thereto.

[0195] A damper 270 is disposed between an upper part of the bobbin 250 and the external frame 240, and the damper 270 has a wrinkle structure and thus contracts or expands to adjust the up-down vibration of the bobbin according to the up-down movement of the bobbin. That is, since the damper 270 is connected to the bobbin 250 and to the external frame 240, the up-down vibration of the bobbin is restricted by the restoring force of the damper 270. Specifically, when the bobbin 250 vibrates upward beyond a predetermined height or downward beyond a predetermined level, the restoring force of the damper 270 can return the bobbin to its original position.

[0196] The damper may be expressed by another term, such as an edge.

[0197] FIG. 9B illustrates the second structure having the magnet disposed inside the coil, which may be expressed as a micro type or an internal magnet type.

[0198] In the sound generating actuator of the second structure, the lower plate 210 is fixed to a support hole 310 formed at the cover bottom 300, the magnet 220 is disposed at a central area of the lower plate, and the center pole extends upward from the top of the magnet.

[0199] The upper plate 210' protrudes from a peripheral part of the lower plate, and the external frame 240 is disposed on the edge of the upper plate.

[0200] The bobbin 250 is disposed to surround the magnet 220 and the center pole 230, and the coil 260 is wound around the bobbin.

[0201] The damper 270 is disposed between the external frame 240 and the bobbin.

[0202] The sound generating actuator of the second structure has a smaller leakage of magnetic flux than that of the first structure and can have a reduced entire size. However, the sound generating actuator of the second structure may undergo reduction of magnetic flux due to heating by the user of Neodymium (Nd) magnet, and is difficult to manufacture.

[0203] In the present embodiment, both the actuators of the first structure and the second structure may be used, and the following description discusses the first structure as a representative for convenience of description.

[0204] The sound generating actuator used in a display device according to the present embodiment is not limited to the type illustrated in FIGs. 9A and 9B, and includes other types of actuators as long as the actuators can vibrate a display panel up and down to generate sound in response to application of the electric current.

[0205] FIGs. 10A and 10B illustrate a state in which a sound generating actuator according to an embodiment of the present disclosure vibrates an organic light emitting display panel to generate sound.

[0206] FIG. 10A illustrates a state in which the electric current has been applied, wherein the center pole connected to the lower surface of the magnet serves as the N pole and the upper plate connected to the upper surfaces of the magnet serves as the S pole to establish an external magnetic field between coils.

[0207] In this state, if an electric current for generating sound is applied to a coil, an applied magnetic field is generated around the coil. The applied magnetic field generates, together with the external magnetic field, a force of moving the bobbin upward.

[0208] By the force, the bobbin moves upward and the organic light emitting display panel attached to the distal end of the bobbin moves upward, as shown in FIG. 10A.

[0209] In this state, if the application of the electric current is interrupted or the electric current is applied in the opposite direction, a force of moving the bobbin downward is generated in the same principle, and the display panel thus moves downward, as shown in FIG. 10B.

[0210] In this way, according to the direction and magnitude of the electric current applied to the coil, the organic light emitting display panel vibrates up and down to generate sound wave.

[0211] FIGs. 11A and 11B illustrate an example of a coupling state between a sound generating actuator according to an embodiment of the present disclosure and a cover bottom, which is a support part of a display device, and FIGs. 12A and 12B illustrating other embodiments of a coupling structure between the sound generating actuator and the cover bottom.

[0212] The sound generating actuator 200 according to the present embodiment may be inserted through and supported by a support hole formed on a cover bottom or back cover, which is a support part of a display device. FIGs. 11A to 12B illustrate various support structures.

[0213] In the support structure of FIG. 11A and 11B, a

support hole 310 is formed through the cover bottom 300, and at least one among the lower plate 210 of the sound generating actuator 200, the magnet 220, and the upper plate 210' is inserted and received in the support hole.

[0214] An extension part 212 extending outward from the lower plate is additionally formed on the lower surface of the lower plate 210, and the extension part 212 is fixed to the lower surface of the cover bottom 300 to allow the sound generating actuator 200 to be mounted to the cover bottom.

[0215] In this way, when the sound generating actuator 200 is inserted in and fixed to the support hole formed through the cover bottom, the distance between the display panel and the cover bottom can be reduced to thereby reduce the thickness of the display device.

[0216] In other words, although an air gap as a space in which the display panel can vibrate should be arranged between the display panel and the cover bottom, the sound generating actuator inserted in/fixed to the support hole of the cover bottom can minimize the air gap due to the reduced height of the sound generating actuator disposed between the rear surface of the display panel and the inner surface of the cover bottom.

[0217] In the structure illustrated in FIGs. 11A and 11B, a screw hole is formed on the rear surface of the cover bottom, and a bolt 320 or a screw is fastened through the screw hole formed through the extension part 212 of the lower plate to the screw hole of the cover bottom to fix the sound generating actuator to the cover bottom.

[0218] Meanwhile, in the structure illustrated in FIG. 12A, which is not a simple screw-coupling structure, a PEM™ nut 330 or self-clinching nut is placed to secure a predetermined distance between the cover bottom 300 and the extension part 212 of the lower plate, and the actuator is then fixed by the bolt 320.

[0219] Use of the PEM™ nut 330 or self-clinching nut as shown in FIG. 12A can secure a predetermined space between the sound generating actuator and the cover bottom 300 and thus can minimize the transferring of the vibration of the actuator to the cover bottom.

[0220] In the structure shown in FIG. 12B, an adhesive member, such as a double-sided tape, is disposed between the cover bottom and the extension part 212 of the lower plate of the actuator to attach and fix them to each other.

[0221] When the adhesive member as shown in FIG. 12B has a properly adjusted elasticity and thickness, the adhesive member can function as a kind of damper to minimize the transferring of the vibration of the actuator to the cover bottom.

[0222] The structure as shown in FIGs. 11A to 12B in which the sound generating actuator 200 attached to the organic light emitting display panel to directly vibrate the organic light emitting display panel is inserted in and fixed to a support hole formed through the cover bottom can reduce the thickness of the display device in comparison with the structure in which the actuator is completely received in the display device.

[0223] FIG. 13 illustrates a case in which an air gap configured to receive generated sound is limited by an external frame of the sound generating actuator.

[0224] As described above, in the structure according to the present embodiment in which an organic light emitting display panel directly vibrates to generate sound, the display panel functions as a kind of vibration plate of a speaker.

[0225] In a typical sound generating apparatus, a space closed by a vibration plate vibrated by a bobbin and an enclosure surrounding the vibration plate is a baffle space or an air gap for transferring of vibration or sound.

[0226] The shape and size of the baffle space or air gap determine the sound tone or sound output characteristic. Theoretically, the larger the baffle space or the air gap, the better the performance of the apparatus.

[0227] FIG. 13 illustrates a structure in which an external frame 240' functioning as an enclosure of a speaker is disposed around the bobbin of the sound generating actuator and extends up to and is attached to the organic light emitting display panel 100.

[0228] In this structure, an area B of the organic light emitting display panel defined by the external frame 240' functions as a vibration plate. In result, the space defined by the external frame 240' and the part B of the organic light emitting display panel is the baffle space or air gap 600'.

[0229] The structure illustrated in FIG. 13, in which the baffle space or the air gap 600' and the area B of the organic light emitting display panel, which generates sound, are relatively small, does not have a good sound output characteristic.

[0230] Therefore, embodiments of the present disclosure provide the baffle part 400 illustrated in FIGs. 14A to 14C in order to enlarge the baffle space or air gap and enhance the sealing of the space.

[0231] That is, by arranging a baffle part having a sealing structure between an edge part of the organic light emitting display panel and a support part thereunder, the entire area of the display panel can be substantially used as a vibration plate.

[0232] That is, as shown in FIGs. 2A to 2C, by sealingly coupling the organic light emitting display panel to the cover bottom 300 at an edge of the air gap 600, the air gap may be defined as an area sealed in all directions, and such a sealed air gap may be expressed as a baffle structure.

[0233] FIGs. 14A to 14C illustrate an example of a baffle part formed between an organic light emitting display panel and a middle cabinet, which is one of support parts for the organic light emitting display panel, in order to form an air gap between the organic light emitting display panel, which serves as a vibrating plate, and a cover bottom.

[0234] As shown in FIG. 14A, the panel vibration type sound generating apparatus according to the present embodiment should secure an air gap 600, which is a

space allowing the panel to be vibrated by the sound generating actuator 200, between the organic light emitting display panel 100 and a support part (cover bottom 300).

[0235] Further, one side of the organic light emitting display panel should be coupled to the support structure of the organic light emitting display panel to generate a sound wave during the vibration of the organic light emitting display panel. Especially, the generated sound should not leak to the outside through a side, etc. of the display device.

[0236] To this end, the organic light emitting display device according to the present embodiment has a baffle part 400 formed between the lower surface of the organic light emitting display panel and the support structure.

[0237] Specifically, it is preferred that a predetermined section (that is, air gap) is defined around the sound generating actuator, a baffle part is disposed between the upper surface of the cover bottom or middle cabinet and the lower surface of the display panel at an edge of the section, and the baffle part 400 includes an adhesive member 412, such as a double-sided tape attached between the lower surface of the display panel and the upper surface of the support structure of the display device, and a sealing part 414 disposed outside the adhesive member.

[0238] The section in which the baffle part is formed may be the entire display panel area defined by four outer sides of the display panel. However, the section is not limited to such a definition and may be defined by an area excluding the area in which a source PCB is disposed, as described below.

[0239] When two or more sound generating actuators are arranged to implement stereo or three-dimensional sound, two or more sections may be separately arranged to form the baffle part.

[0240] As shown in FIGs. 14A to 14C, the support part of the organic light emitting display device may include a middle cabinet 500, which is coupled to the cover bottom and is configured to allow a part of the display panel to be stably placed thereon, in addition to the cover bottom 300 covering the entire rear surface of the display panel.

[0241] The middle cabinet 500 is a frame-shaped member formed along the outer periphery of the display panel, and includes a horizontal support part 502 on which a part of the display panel is stably placed, and a vertical support part 504 bent in opposite directions from the horizontal support part to cover the side surface of the cover bottom and the side surface of the display panel. Therefore, the middle cabinet may have a shape of a letter "T" in general.

[0242] The middle cabinet 500 provides an external ornamental part of the side surface of the display device or set apparatus, and may not be used or integrally formed with the cover bottom in some cases.

[0243] According to the embodiment of FIGs. 14A to 14C, the adhesive member 412 of the baffle part 400 is

a double-sided tape disposed between the upper surface of the horizontal support part of the middle cabinet 500 and the display panel and fixes the lower surfaces of the display panel to the middle cabinet.

[0244] The sealing part 414 of the baffle part is placed outside of the adhesive member and preferably has a thickness or height larger than the thickness or height of the adhesive member.

[0245] The sealing member 414 may be made from a material, such as rubber having a large elasticity, and has a thickness t_2 larger than the thickness t_1 of the adhesive member 412 as illustrated in FIG. 7B.

[0246] That is, as illustrated in FIG. 14B, one adhesive surface of the adhesive member 412, which is a double-sided tape having a thickness t_1 , is attached to the inner part of the upper surface of the horizontal support part 502 of the middle cabinet 500, and the sealing part 414 made of an elastic material having a thickness larger than t_1 is disposed outside the adhesive member.

[0247] In this state, the organic light emitting display panel 100 is attached to the other adhesive surface of the adhesive member 412. Then, the organic light emitting display panel is attached to the middle cabinet while pressing, to a certain degree, the sealing part 414 having the larger thickness. (FIG. 14c)

[0248] As a result, the sealing of the air gap around the sound generating actuator is further enhanced.

[0249] The structure illustrated in FIG. 14C in which the organic light emitting display panel 100 and the cover bottom 300 are coupled to each other while forming the air gap 600 to be as wide as the thickness of the adhesive member 412 and the horizontal support part 502 of the middle cabinet can secure a vibration space in which the display panel can generate sound, and can prevent the internally generated sound wave from leaking to the outside along the side surface of the display device.

[0250] The baffle part 400 disposed at an edge of the air gap, which has a double structure of the adhesive member 412 and the sealing part 414 while allowing the sealing part to have a larger thickness, can further enhance the sealing of the air gap and prevent leakage of the sound.

[0251] It should be construed that the middle cabinet 500 used in the present specification may be replaced by another term, such as a guide panel, a plastic chassis, a p-chassis, a support main, a main support, or a mold frame, and includes all types of members, which are structures having a shape of a four-sided frame and having a sectional shape including multiple bent portions and are connected to the cover bottom to be used to support the display panel and the baffle part.

[0252] The middle cabinet 500 may be made of synthetic resin, such as polycarbonate, or a metal material, such as aluminum, and may be manufactured by a manufacturing method, such as injection molding, without being limited thereto.

[0253] Although a middle cabinet is used to support the cover bottom and the display panel in the embodiment

described above, the middle cabinet may not be always required.

[0254] Therefore, in some cases, the panel may have a structure in which the cover bottom 300 supports both the first display panel and the second display panel while forming an external lateral appearance of the display device without the middle cabinet. In this structure, the baffle part 400 may be disposed between a part of the edge of the cover bottom and the organic light emitting display panel.

[0255] When the middle cabinet does not exist, the cover bottom may have a stepped portion formed at an edge thereof and an adhesive member 412 and a sealing part 414 arranged on the upper surface of the stepped portion.

[0256] This embodiment has a simple structure without a middle support structure like the middle cabinet and includes the baffle part 400, which is disposed at an edge of the air gap and has a double structure of the adhesive member 412 and the sealing part 414 while allowing the sealing part to have a larger thickness. Therefore, the embodiment of FIG. 8 can secure a vibration space in which the display panel can generate sound, and can prevent the internally generated sound wave from leaking to the outside along the side surface of the display device.

[0257] The thickness of the air gap 600, that is, the distance G between the organic light emitting display panel and the cover bottom, may have a value of about 1.0 to 3.0 mm in the present embodiment. However, the thickness is not limited to the range and may have a value in a range different according to the degree of vibration of the display panel, etc.

[0258] However, in order to reduce the thickness of the organic light emitting display device, it is preferable to minimize the thickness G of the air gap in consideration of the quantity of vibration of the display panel by the sound generating actuator, the range of sound to be output, and the quantity of output. In the present embodiment, it has been confirmed that an optimum thickness G of the air gap is about 2.0 mm.

[0259] FIG. 15 is a graph illustrating a sound output characteristic in the case of using a panel vibration type sound generating apparatus according to the present embodiment, in comparison with a conventional speaker.

[0260] As a result of an actual experiment, a rapid sound intensity reduction (sound pressure reduction) as illustrated by a dotted line in FIG. 15 was observed in the middle/high sound range of 4000 Hz or higher when a speaker disposed at the rear surface or the lower end as shown in FIG. 1 separately from the display panel.

[0261] In contrast, as illustrated by a solid line in FIG. 15, the structure according to the present embodiment in which a sound generating actuator is fixed to a support structure to directly vibrate the organic light emitting display panel could reduce the sound pressure reduction in the middle/high sound range, and especially could greatly improve the sound output characteristic in the high sound range.

[0262] In result, use of the present embodiment can provide rich sound output in all sound ranges.

[0263] Embodiments of the present disclosure as described above, in which an organic light emitting display panel other than a liquid crystal display panel is used as a display panel for a display device which directly vibrates the display panel to generate sound, facilitates the arrangement of the sound generating actuator and can prevent the sound generating actuator from degrading the screen quality.

[0264] Especially, among various types of organic light emitting display panels, the bottom emission type organic light emitting display panel can prevent generation of a weighted color mixing phenomenon in a wide viewing angle at the time of panel vibration and can reduce the thickness or weight of the panel to thereby enhance the sound generation characteristic.

[0265] The above description and the accompanying drawings provide an example of the technical idea of the present invention for illustrative purposes only. Those having ordinary knowledge in the technical field, to which the present invention pertains, will appreciate that various modifications and changes in form, such as combination, separation, substitution, and change of a configuration, are possible without departing from the essential features of the present invention. Therefore, the embodiments disclosed in the present invention are intended to illustrate the scope of the technical idea of the present invention, and the scope of the present invention is not limited by the embodiment. The scope of the present invention shall be construed on the basis of the accompanying claims in such a manner that all of the technical ideas included within the scope equivalent to the claims belong to the present invention.

Claims

1. An organic light emitting display device comprising:

an organic light emitting display panel (1100, 1200) including a light emitting layer (1180, 1280) and an encapsulation layer (1190, 1290) disposed at one side of the light emitting layer (1180, 1280), the light emitting layer including a substrate (1182, 1211), a plurality of thin film transistors (1184, 1214) arranged on the substrate, and an organic light emitting material layer (1186, 1219, 1264) between two electrode layers disposed at one side of the thin film transistors; and
a sound generating actuator (200) disposed to be connected to a surface of the organic light emitting display panel (1100, 1200) and configured to vibrate the organic light emitting display panel to generate sound.

2. The organic light emitting display device of claim 1

wherein the organic light emitting display panel (1200) is a bottom emission type organic light emitting display panel.

3. The organic light emitting display device of any preceding claim further comprising an image displaying plane, through which light of the organic light emitting display panel (1100) is emitted, wherein the light emitting layer and the encapsulation layer (1290) are sequentially laminated under the image displaying plane, and the sound generating actuator (200) is disposed to be in contact with the encapsulation layer (1290). 5
4. The organic light emitting display device of any preceding claim wherein the encapsulation layer (1290) is a metal thin film layer having a thickness of 0.05 to 0.2 mm. 10
5. The organic light emitting display device of any preceding claim wherein the encapsulation layer (1290) is an iron-nickel alloy or Invar™ metal material. 15
6. The organic light emitting display device of one of claims 1 to 5 wherein the light emitting layer comprises a white organic light emitting material layer (1264) and a color filter layer (1248) disposed on the white organic light emitting material layer. 20
7. The organic light emitting display device of any preceding claim, wherein an air gap (600) is provided between the display panel and a support structure. 25
8. The organic light emitting display device of claim 7, wherein the support structure comprises a support hole (310), the sound generating actuator (200) being inserted through the support hole. 30
9. The organic light emitting display device of claim 8 wherein the support structure is configured to cover and support at least a rear surface of the organic light emitting display panel, wherein the sound generating actuator (200) is connected to the support hole (310). 35
10. The organic light emitting display device of claim 8 or 9 wherein the sound generating actuator (200) comprises: 40
 - a plate (210) inserted in the support hole (310); 45
 - a magnet disposed on the plate;
 - a center pole (230) disposed at a center of the plate;
 - a bobbin (250) disposed to surround the center pole and be connected to the display panel; and 50
 - a coil (260) wound around the bobbin. 55
11. The organic light emitting display device of claim 10

wherein the plate (210) of the sound generating actuator (200) further comprises an extension part (212) extending outward and connected to a lower surface of support structure.

12. The organic light emitting display device of claim 11 wherein the extension part (212) is connected to the lower surface of the support structure with a bolt, a PEM™ nut, or an adhesive member.
13. The organic light emitting display device of any of claims 7 to 12, further comprising a baffle part (400) between the display panel (100) and the support structure, the baffle part comprising an adhesive member (412) and a sealing part (414) disposed outside of the adhesive member.
14. The organic light emitting display device of any preceding claim, wherein the sound generating actuator is configured to directly vibrate the organic light emitting display panel.
15. The organic light emitting display device of any preceding claim, wherein the sound generating actuator is directly connected to the surface of the organic light emitting display panel.

FIG. 1

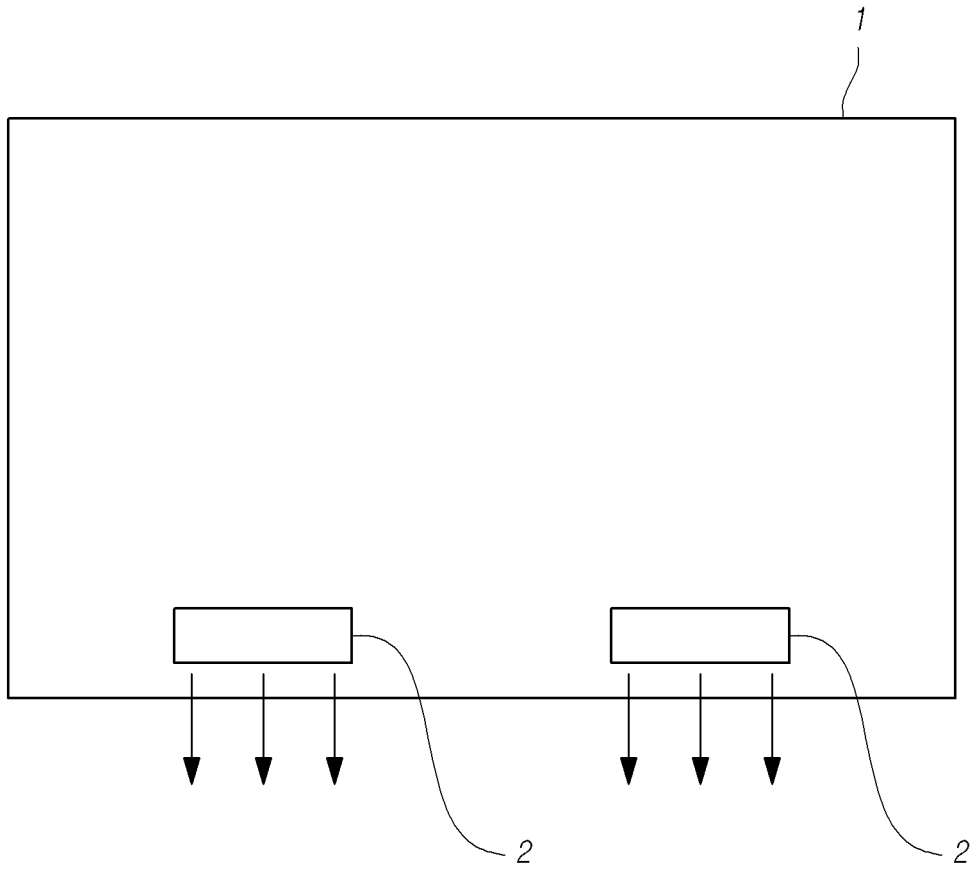


FIG. 2A

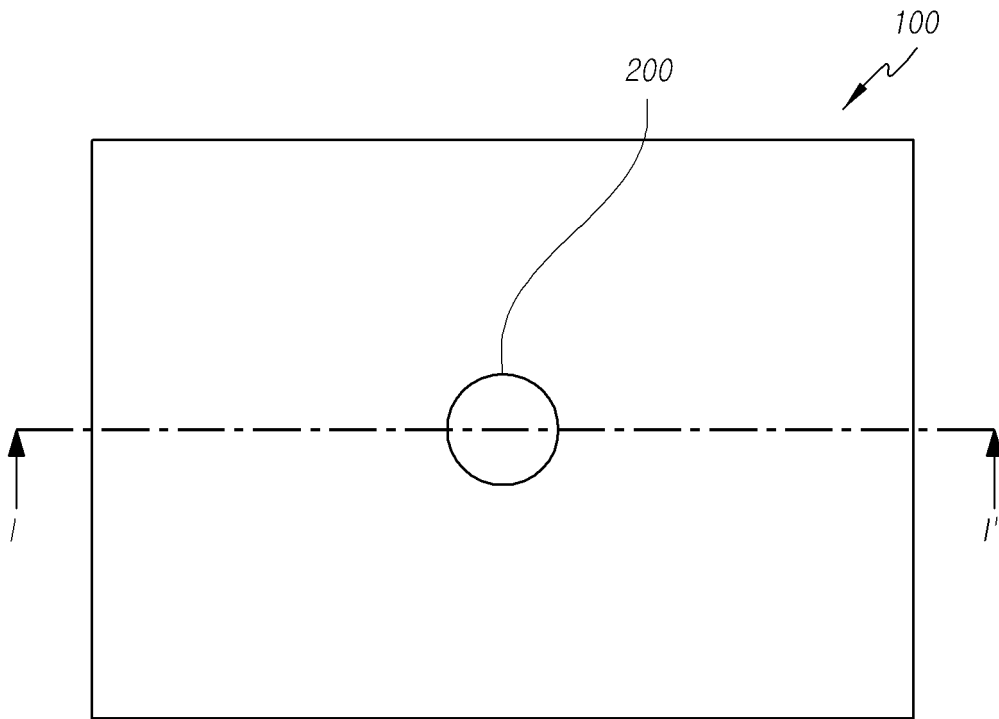


FIG. 2B

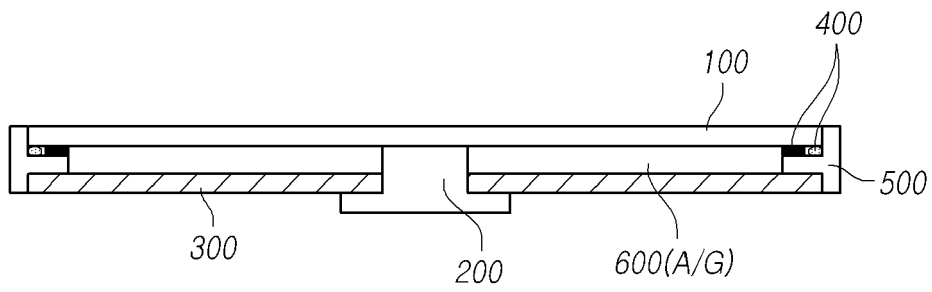


FIG. 2C

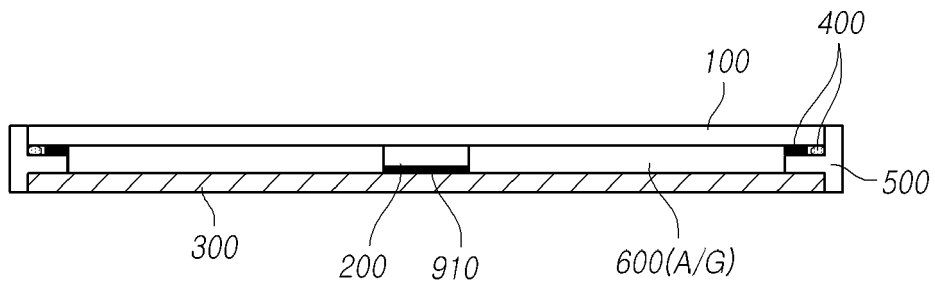


FIG. 3A

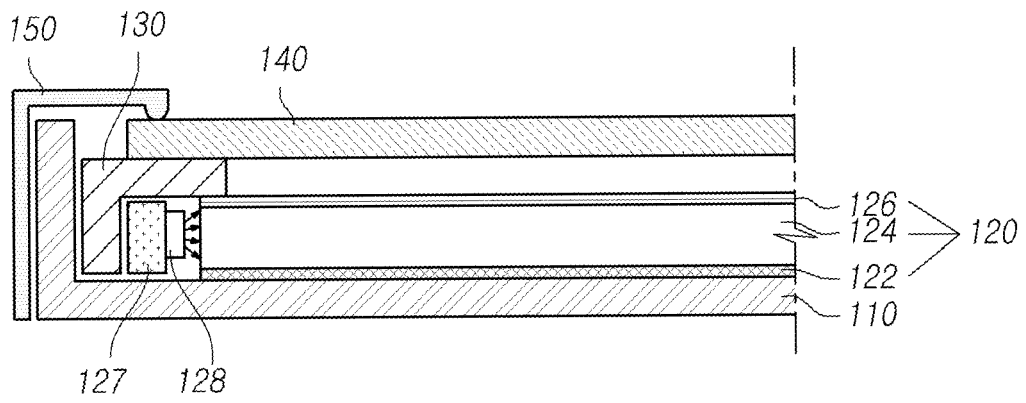


FIG. 3B

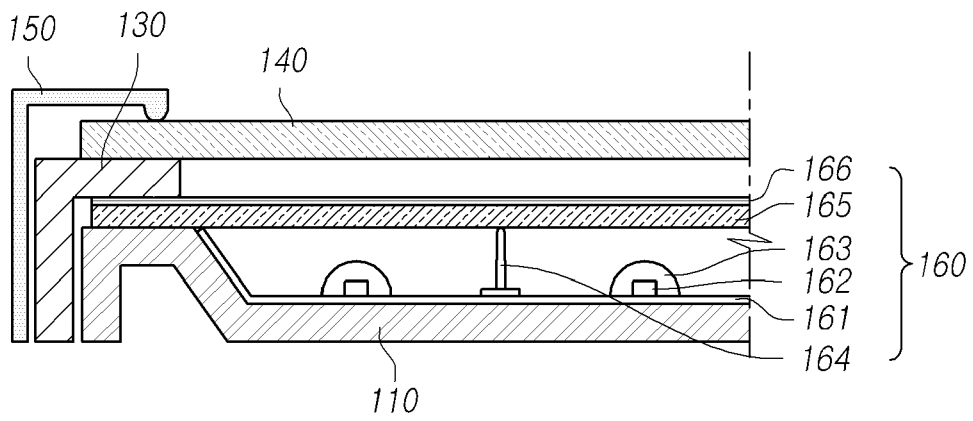


FIG. 4

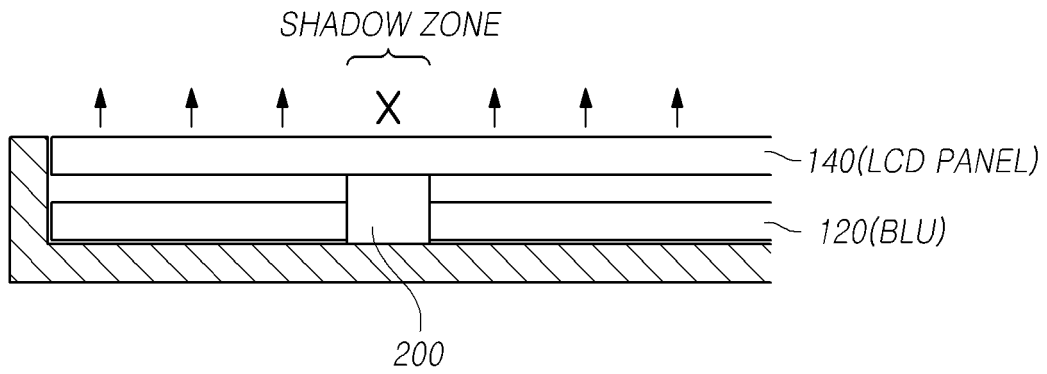


FIG. 5

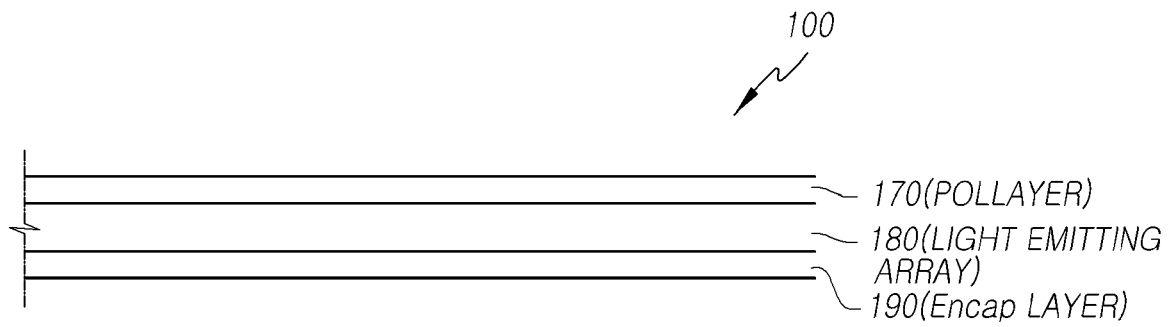


FIG. 6

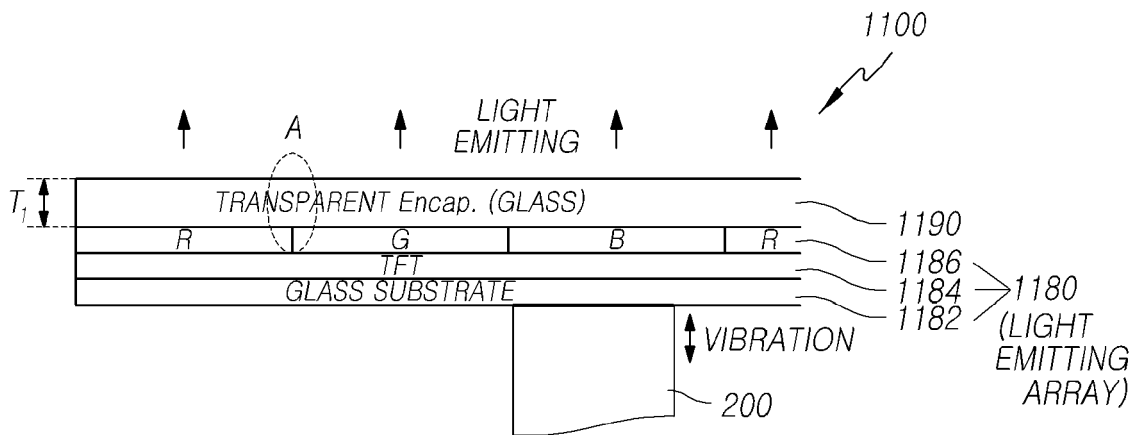


FIG. 7A

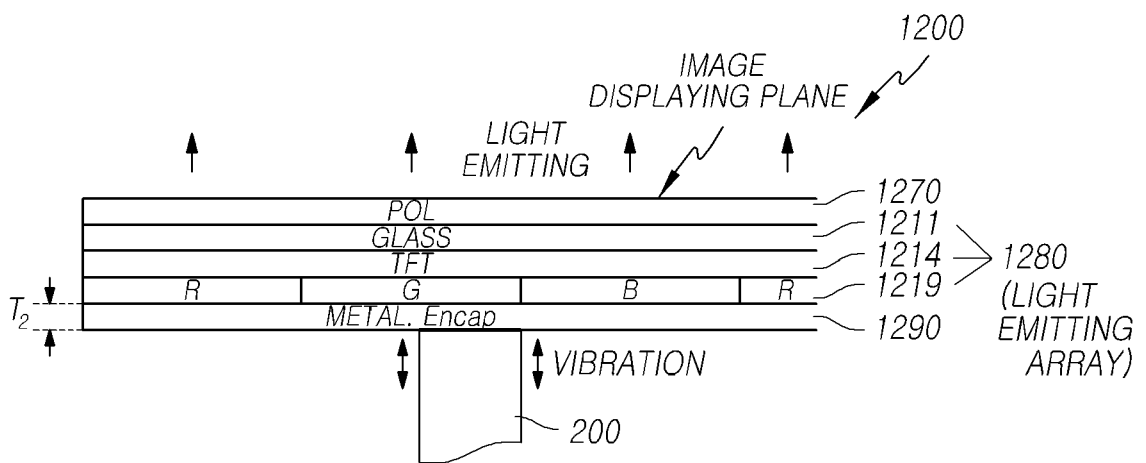


FIG. 7B

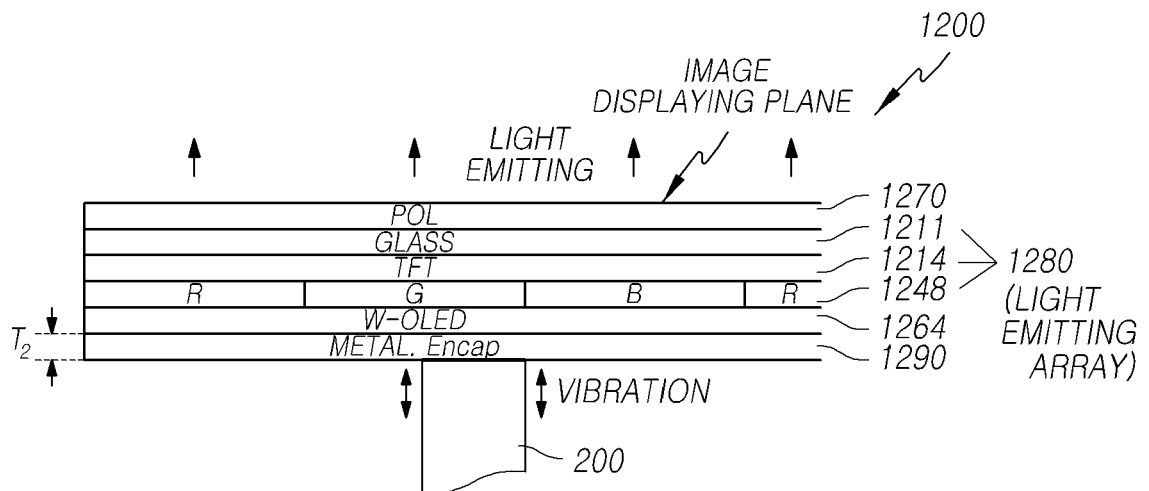


FIG. 8

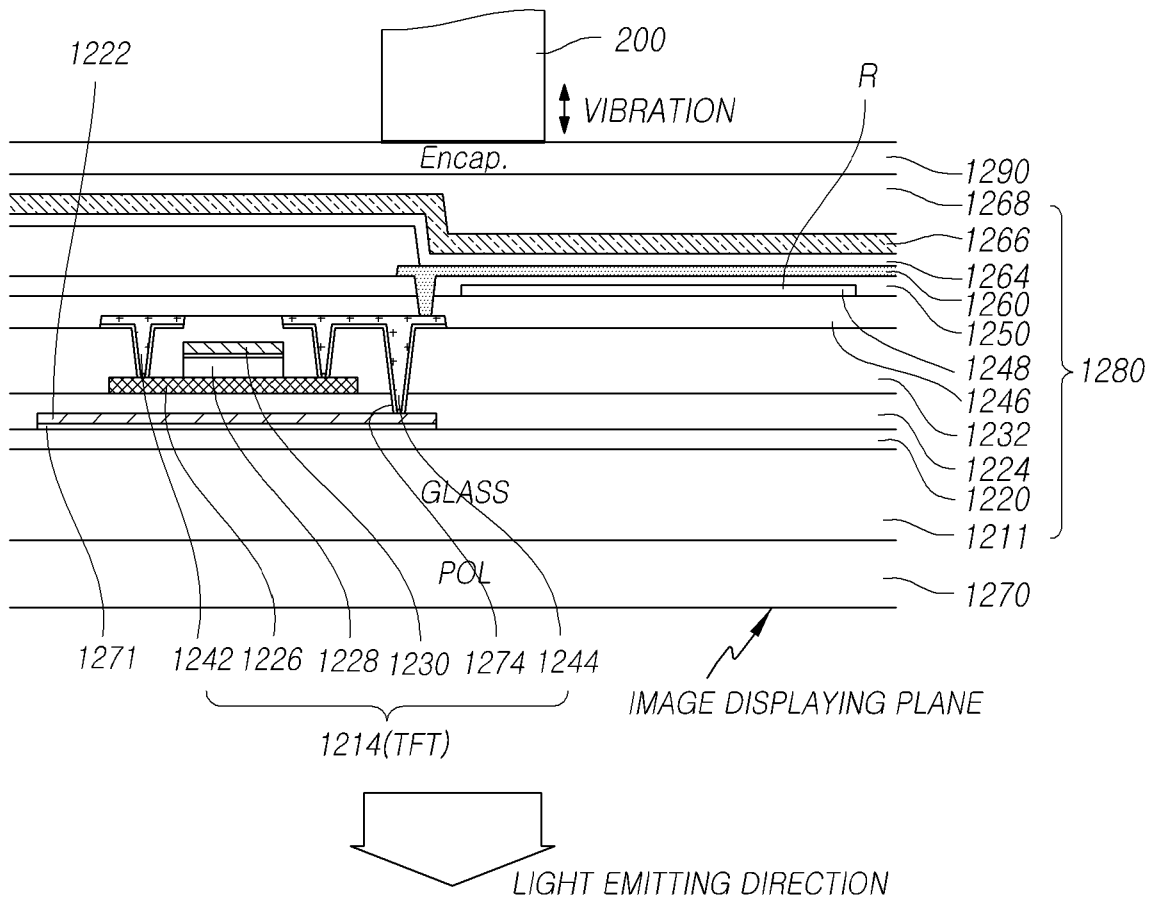


FIG. 9A

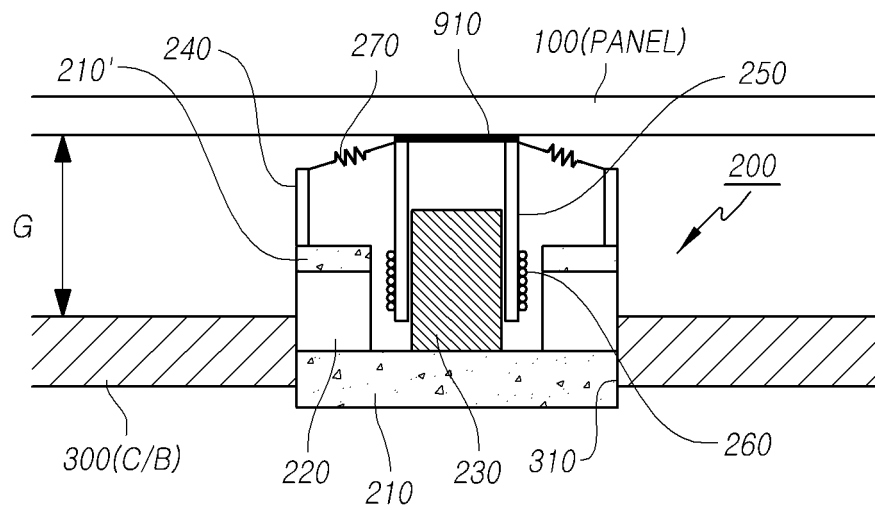


FIG. 9B

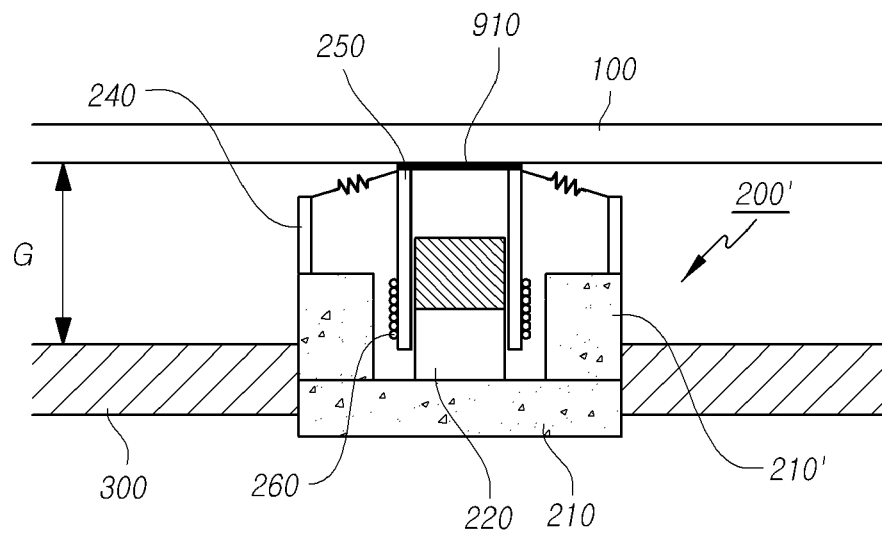


FIG. 10A

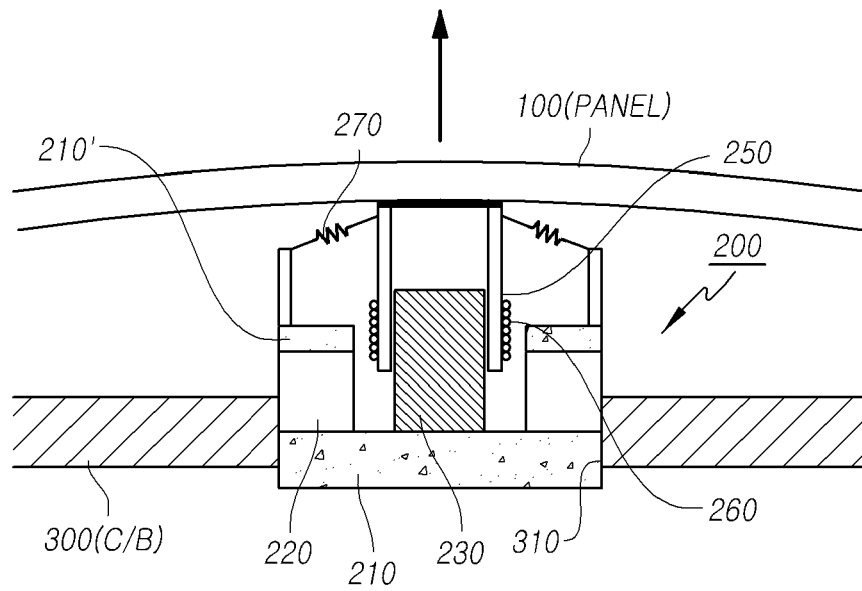


FIG. 10B

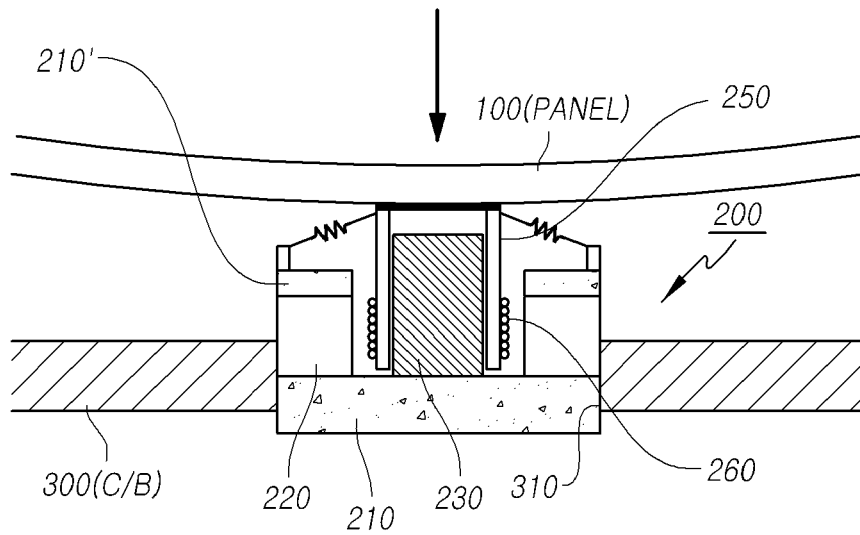


FIG. 11A

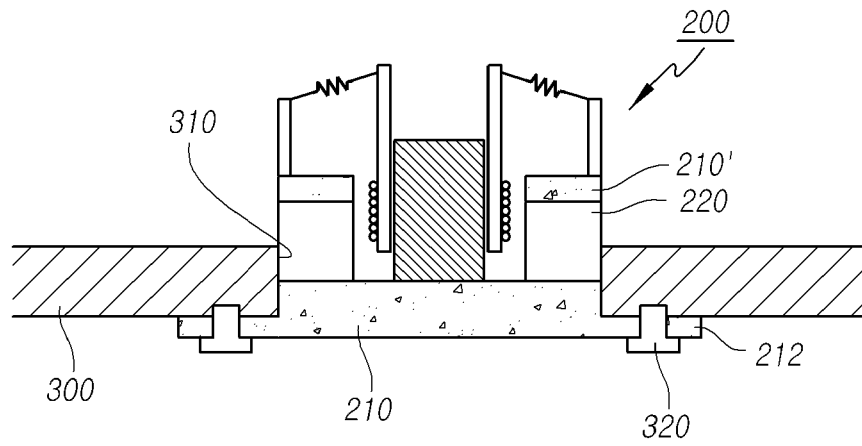


FIG. 11B

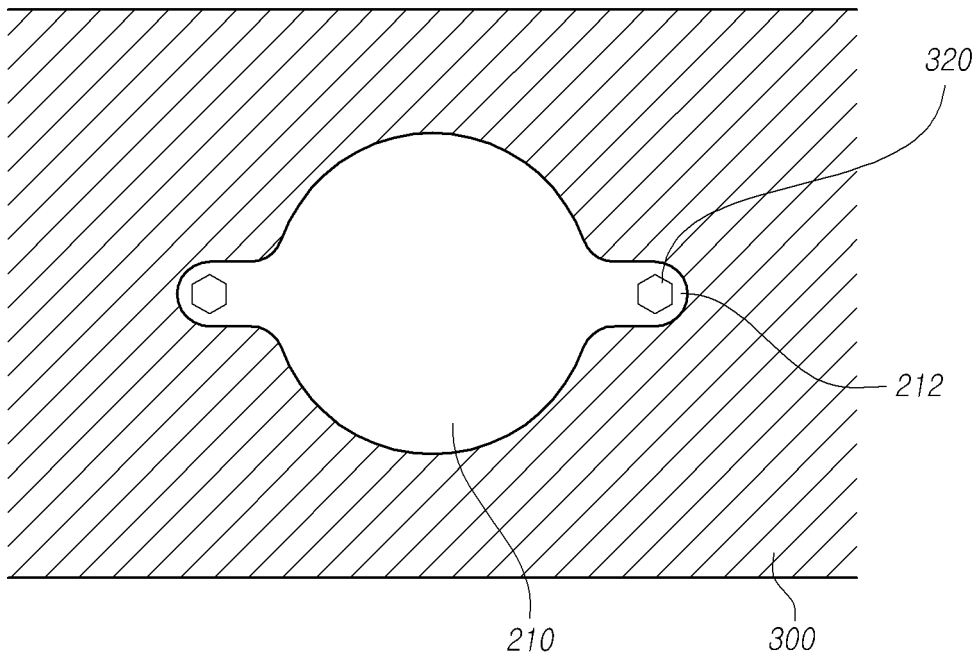


FIG. 12A

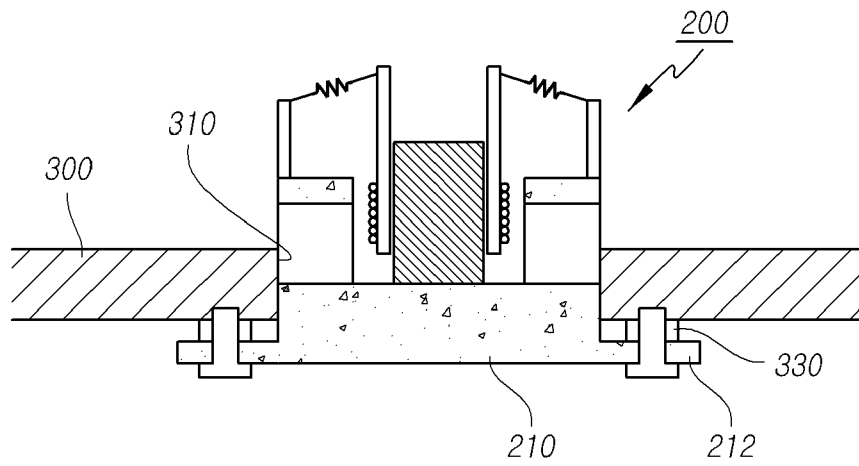


FIG. 12B

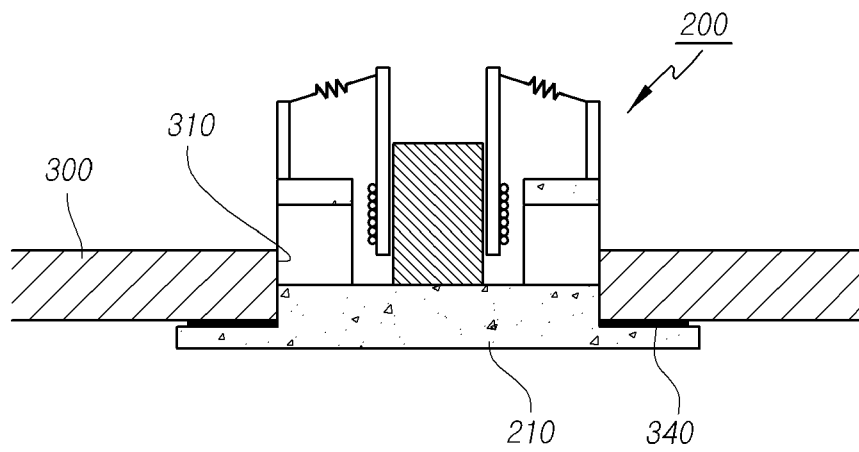


FIG. 13

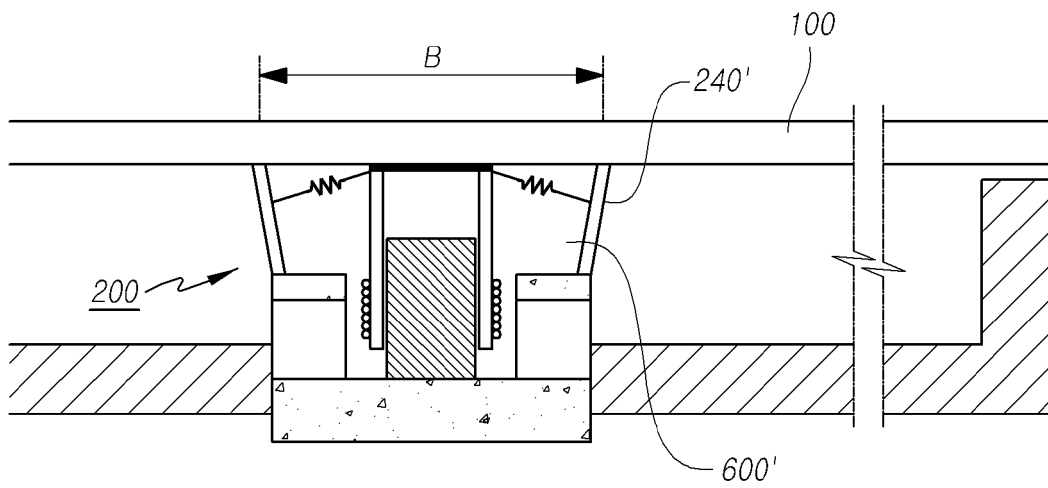


FIG. 14A

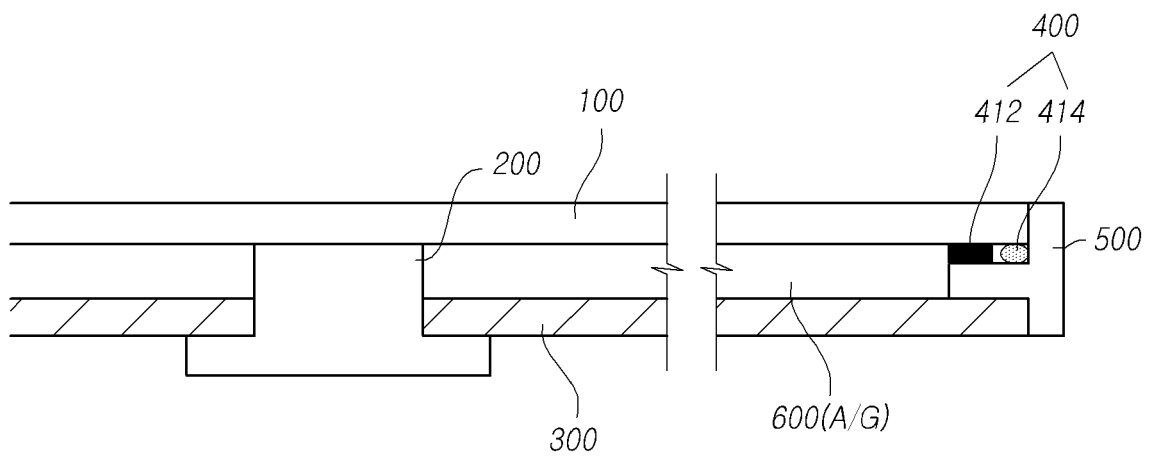


FIG. 14B

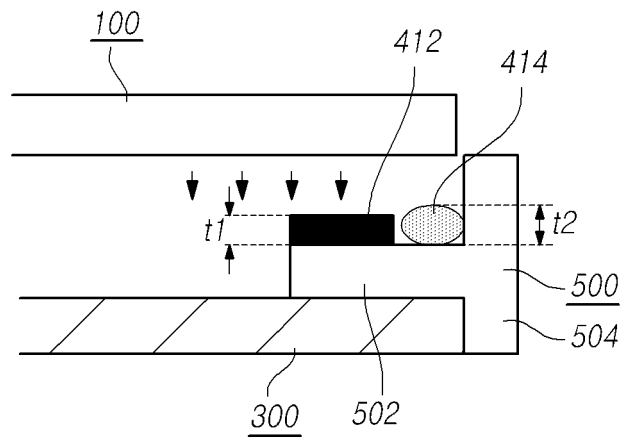


FIG. 14C

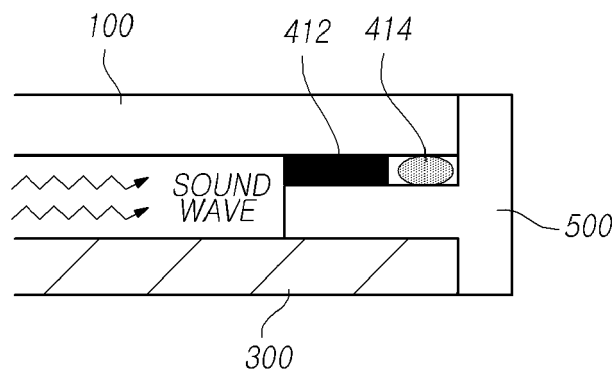
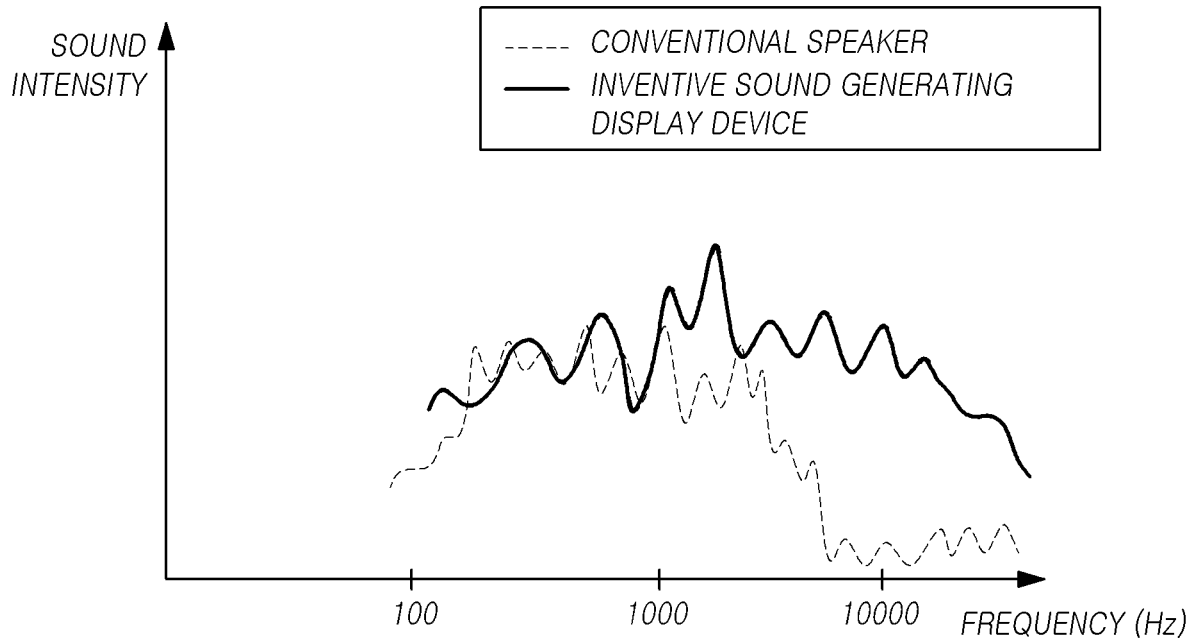


FIG. 15





EUROPEAN SEARCH REPORT

Application Number
EP 16 18 1191

5

10

15

20

25

30

35

40

45

50

55

DOCUMENTS CONSIDERED TO BE RELEVANT			
Category	Citation of document with indication, where appropriate, of relevant passages	Relevant to claim	CLASSIFICATION OF THE APPLICATION (IPC)
X	JP 2009 100223 A (KENWOOD CORP; KIDO JUNJI; GOTO DENSHI KK) 7 May 2009 (2009-05-07)	1-4, 6-12,14, 15	INV. H01L27/32 G06F1/16
Y	* figures 3,9-11 *	5	
A	* claim 5 * * paragraphs [0030], [0038], [0040], [0044], [0053] - [0063], [0065], [0069] - [0071], [0075], [0105] *	13	
X	US 2012/243719 A1 (FRANKLIN JEREMY C [US] ET AL) 27 September 2012 (2012-09-27)	1-4,6,7, 14,15	
Y	* figures 6-9 *	5	
A	* paragraphs [0002], [0003], [0004], [0007] - [0012], [0050] - [0058], [0061], [0068] *	8-13	
Y	US 2014/326402 A1 (LEE DONG JIN [KR] ET AL) 6 November 2014 (2014-11-06)	5	
	* paragraphs [0004] - [0007] *		
			TECHNICAL FIELDS SEARCHED (IPC)
			H01L G06F H04R
The present search report has been drawn up for all claims			
Place of search The Hague		Date of completion of the search 29 August 2017	Examiner De Laere, Ann
CATEGORY OF CITED DOCUMENTS X : particularly relevant if taken alone Y : particularly relevant if combined with another document of the same category A : technological background O : non-written disclosure P : intermediate document		T : theory or principle underlying the invention E : earlier patent document, but published on, or after the filing date D : document cited in the application L : document cited for other reasons & : member of the same patent family, corresponding document	

EPO FORM 1503 03/02 (P04C01)

**ANNEX TO THE EUROPEAN SEARCH REPORT
ON EUROPEAN PATENT APPLICATION NO.**

EP 16 18 1191

5 This annex lists the patent family members relating to the patent documents cited in the above-mentioned European search report.
The members are as contained in the European Patent Office EDP file on
The European Patent Office is in no way liable for these particulars which are merely given for the purpose of information.

29-08-2017

Patent document cited in search report	Publication date	Patent family member(s)	Publication date
JP 2009100223 A	07-05-2009	NONE	

US 2012243719 A1	27-09-2012	NONE	

US 2014326402 A1	06-11-2014	JP 2014220237 A	20-11-2014
		KR 101449984 B1	15-10-2014
		TW 201507540 A	16-02-2015
		US 2014326402 A1	06-11-2014

EPO FORM P0459

For more details about this annex : see Official Journal of the European Patent Office, No. 12/82

REFERENCES CITED IN THE DESCRIPTION

This list of references cited by the applicant is for the reader's convenience only. It does not form part of the European patent document. Even though great care has been taken in compiling the references, errors or omissions cannot be excluded and the EPO disclaims all liability in this regard.

Patent documents cited in the description

- KR 1020160041384 [0001]

专利名称(译)	有机发光显示装置		
公开(公告)号	EP3229272A1	公开(公告)日	2017-10-11
申请号	EP2016181191	申请日	2016-07-26
[标]申请(专利权)人(译)	乐金显示有限公司		
申请(专利权)人(译)	LG DISPLAY CO. , LTD.		
当前申请(专利权)人(译)	LG DISPLAY CO. , LTD.		
[标]发明人	CHOI YEONGRAK OH CHANGHO PARK KWANHO LEE SUNGTAE		
发明人	CHOI, YEONGRAK OH, CHANGHO PARK, KWANHO LEE, SUNGTAE		
IPC分类号	H01L27/32 G06F1/16		
CPC分类号	H04R9/02 H04R9/06 H04R2400/11 G06F1/1605 G06F1/1637 G06F1/1688 H01L27/3225 H04R1/028 H04R7/045 H04R7/10 H04R7/20 H04R9/025 H04R2307/023 H04R2307/025 H04R2440/05 H04R2499 /15 H01L27/322 H01L27/3262 H01L51/5246 H04R7/06 H04R9/045		
优先权	1020160041384 2016-04-05 KR		
外部链接	Espacenet		

摘要(译)

本公开的实施例涉及一种有机发光显示装置，其直接振动有机发光显示面板（1200）以产生声音，并且包括：包括发光层（1280）的有机发光显示面板（1200），包括发光层（1280）。有机发光材料层（1219）和设置在发光层一侧的封装层（1290）；以及与有机发光显示面板直接接触的声音产生致动器（200），以使有机发光显示面板振动以产生声音。特别地，有机发光显示面板采用底部发光方案，因此可以防止在面板振动时在宽视角中产生加权的混色现象，并减小面板的厚度或重量从而增强声音生成特征。

FIG. 7A

