

(19)



(11)

EP 2 827 371 B1

(12)

EUROPEAN PATENT SPECIFICATION

(45) Date of publication and mention of the grant of the patent:
22.08.2018 Bulletin 2018/34

(51) Int Cl.:
H01L 27/32^(2006.01) H01L 51/52^(2006.01)

(21) Application number: **14173094.5**

(22) Date of filing: **19.06.2014**

(54) Organic light emitting display apparatus and manufacturing method thereof

Organische lichtemittierende Anzeigevorrichtung und Herstellungsverfahren dafür
Affichage à diodes électroluminescentes organiques et son procédé de fabrication

(84) Designated Contracting States:
AL AT BE BG CH CY CZ DE DK EE ES FI FR GB GR HR HU IE IS IT LI LT LU LV MC MK MT NL NO PL PT RO RS SE SI SK SM TR

(30) Priority: **28.06.2013 KR 20130075544**
10.06.2014 KR 20140070124

(43) Date of publication of application:
21.01.2015 Bulletin 2015/04

(73) Proprietor: **LG Display Co., Ltd.**
Seoul 150-721 (KR)

(72) Inventors:
• **Kim, Eun-Ah**
Asan-si, Chungcheongnam-do (KR)
• **Lee, Joon-Suk**
Seoul (KR)

(74) Representative: **Viering, Jentschura & Partner mbB**
Patent- und Rechtsanwälte
Am Brauhaus 8
01099 Dresden (DE)

(56) References cited:
EP-A1- 2 503 851 WO-A1-02/089210
US-A1- 2007 194 307 US-B1- 6 407 408

EP 2 827 371 B1

Note: Within nine months of the publication of the mention of the grant of the European patent in the European Patent Bulletin, any person may give notice to the European Patent Office of opposition to that patent, in accordance with the Implementing Regulations. Notice of opposition shall not be deemed to have been filed until the opposition fee has been paid. (Art. 99(1) European Patent Convention).

Description**BACKGROUND OF THE INVENTION****Field of the Invention**

[0001] The present invention relates to an organic light emitting display apparatus to improve reliability and a manufacturing method thereof.

Discussion of the Related Art

[0002] Recent transition into an information-oriented society has caused rapid development in the field of displays to visually represent electrical information signals, and correspondingly a variety of flat panel display apparatuses exhibiting excellent properties, such as being thin and lightweight as well as requiring low power consumption, have been developed.

[0003] Representative examples of these flat panel display apparatuses may include Liquid Crystal Display (LCD) apparatuses, Plasma Display Panel (PDP) apparatuses, Field Emission Display (FED) apparatuses, Electro Luminescence Display (ELD) apparatuses, Electro-Wetting Display (EWD) apparatuses, and organic light emitting display apparatuses.

[0004] All of the aforementioned flat panel display apparatuses essentially include a flat display panel to display an image. The flat display panel is fabricated by bonding a pair of substrates to face each other with an inherent light emitting material or a polarizer interposed therebetween, and includes a display face defined by a display region and a peripheral non-display region around the display region. The display region is defined by a plurality of pixel areas.

[0005] Among the flat panel display apparatuses, organic light emitting display apparatuses are configured to display an image using self-illuminating organic light emitting devices. That is, the organic light emitting display apparatuses include a plurality of organic light emitting devices corresponding to a plurality of pixel areas.

[0006] Typically, such an organic light emitting device includes first and second electrodes arranged to face each other, and an organic layer formed of an organic material between the first and second electrodes to attain electroluminescence based on a drive current between the first and second electrodes.

[0007] One of the first and second electrodes (hereinafter referred to as "first electrode") corresponds to each pixel area, and the other (hereinafter referred to as "second electrode") corresponds to all of the pixel areas in common.

[0008] The second electrode is formed in wide area to correspond to all of the pixel areas, and thus has a higher resistance than that of the first electrode. In particular, in the case in which the organic light emitting display apparatus is top emission type, light emits through the second electrode. Therefore the second electrode may be

formed of a transparent conductive material that is as thin as possible in order to increase light emission efficiency, i.e. brightness, of each pixel area, thus having higher resistance.

5 [0009] The higher resistance of the second electrode, however, causes greater voltage drop (IR drop, I: electrical current, R: electrical resistance), and therefore the respective pixel areas may have different brightness based on a distance from a power source. That is, the
10 high resistance of the second electrode deteriorates brightness uniformity throughout the pixel areas. In addition, the high resistance of the second electrode increases power consumption of the organic light emitting display apparatus for acquisition of brightness over a critical value, despite voltage drop.

15 [0010] In particular, as the area of the organic light emitting display apparatus increases, deterioration of brightness uniformity and increase of power consumption due to the high resistance of the second electrode are worsened, which restricts increase in the area of the organic light emitting display apparatus.

20 [0011] To solve the above described problems, a general organic light emitting display apparatus may further include a bus electrode formed of a lower resistance material than the second electrode and connected to the
25 second electrode, in order to reduce a resistance of the second electrode.

30 [0012] In this case, the bus electrode is disposed to face the second electrode, and an organic layer is interposed between the bus electrode and the second electrode. Thus, for connection of the second electrode and the bus electrode, at least a portion of the bus electrode must be exposed without formation of the organic layer thereon.

35 [0013] In one example, to expose at least a portion of the bus electrode, selective etching of the organic layer may be contemplated. However, this etching may cause damage to the entire organic layer and leave an etched organic material as impurities, resulting in deterioration
40 in the reliability of the organic light emitting display apparatus.

45 [0014] US 2007/194307 describes an organic light emitting device including a substrate, and a plurality of sub-pixels, each sub-pixel including a thin film transistor formed on the substrate, a planarization layer formed on the thin film transistor, and having a contact hole exposing a portion of a source electrode or a drain electrode of the thin film transistor, a contact electrode formed on the planarization layer, and electrically connected with
50 the source electrode or the drain electrode of the thin film transistor through the contact hole, a first electrode spaced apart from the contact electrode, the first electrode formed on the planarization layer, an insulating layer formed on the first electrode and the contact electrode,
55 the insulating layer including a first opening exposing a portion of the first electrode and a second opening exposing a portion of the contact electrode, a light emitting layer formed in the first opening, a second electrode

formed on the light emitting layer and electrically connected with a portion of the contact electrode through the second opening.

[0015] WO02/089210 describes an electroluminescent device having a relief pattern including overhanging sections for patterning an electrode layer of the device. In order to prevent the take up and transport of fluid, from which a functional layer is obtainable, along the capillary channels formed by the overhanging sections, the relief pattern includes accompanying sections which are positioned at a distance of the overhanging sections and between the sections and the electroluminescent areas including the functional layers.

[0016] EP2503851 describes an organic EL display that has a reduced optical loss and high efficiency, and can be manufactured by an inexpensive method. The organic EL display is formed by bonding an organic EL element substrate including a substrate, reflective electrode, organic EL layer, separation wall, barrier layer, transparent electrode, and color conversion layer, and a sealing substrate together, wherein the reflective electrode includes a plurality of partial electrodes, the organic EL layer is formed on the reflective electrode and includes a plurality of parts separated by the separation wall, the transparent electrode is formed on the organic EL layer, the barrier layer covers the separation wall and the transparent electrode, and has a recessed part in a location corresponding to the reflective electrode, and the color conversion layer is formed in the recessed part.

[0017] US 6407408 describes an organic light emitting device having a first electrode, an insulating strip disposed over the first electrode, and a bus line disposed on top of the insulating strip, such that the bus line is electrically insulated from the first electrode by the insulating strip. An integrated mask is disposed over the bus line, such that a portion of the bus line remains exposed vis-a-vis the insulating strip and the integrated mask. An organic layer is disposed over the first electrode, such that the organic layer is electrically connected to the first electrode. A second electrode is disposed over the organic layer, such that the second electrode is electrically connected to the organic layer, and such that the second electrode is electrically connected to the exposed portion of the bus line.

SUMMARY OF THE INVENTION

[0018] Accordingly, the present invention is directed to an organic light emitting display apparatus and a manufacturing method thereof that substantially obviate one or more problems due to limitations and disadvantages of the related art.

[0019] An object of the present invention is to provide an organic light emitting display apparatus and a manufacturing method thereof, in which connection between a bus electrode and a second electrode may be accomplished without selective removal of an organic layer, resulting in improved reliability.

[0020] Additional advantages, objects, and features of the invention will be set forth in part in the description which follows and in part will become apparent to those having ordinary skill in the art upon examination of the following or may be learned from practice of the invention. The objectives and other advantages of the invention may be realized and attained by the structure particularly pointed out in the written description and claims hereof as well as the appended drawings.

[0021] To achieve these objects and other advantages and in accordance with the purpose of the disclosure, as embodied and broadly described herein, an organic light emitting display apparatus according to claim 1 is provided.

[0022] In accordance with another aspect of the invention, a manufacturing method of an organic light emitting display apparatus according to claim 10 is provided.

[0023] Preferred embodiments are described in the dependent claims.

[0024] It is to be understood that both the foregoing general description and the following detailed description of the present invention are exemplary and explanatory and are intended to provide further explanation of the invention as claimed.

BRIEF DESCRIPTION OF THE DRAWINGS

[0025] The accompanying drawings, which are included to provide a further understanding of the disclosure and are incorporated in and constitute a part of this application, illustrate embodiment(s) of the invention and together with the description serve to explain the principle of the invention. In the drawings:

FIG. 1 is an equivalent circuit diagram showing an organic light emitting display apparatus according to various embodiments of the present invention;

FIG. 2 is a sectional view showing each pixel area of FIG. 1;

FIG. 3A and FIG. 3B are a detailed views showing a bus electrode, an adherent pattern and a separation pattern as illustrated in FIG. 2;

FIG. 4 is a sectional view showing a common pad as illustrated in FIG. 1;

FIG. 5 is a flowchart showing a manufacturing method of an organic light emitting display apparatus according to various embodiments of the present invention;

FIG. 6 is a flowchart showing "formation of separation pattern" as illustrated in FIG. 5; and

FIGs. 7A to 7I are views sequentially showing respective operations of FIGs. 5 and 6.

DETAILED DESCRIPTION OF THE INVENTION

[0026] Hereinafter, an organic light emitting display apparatus and a manufacturing method thereof according to various embodiments of the present invention will be

described in detail with reference to the accompanying drawings.

[0027] First, an organic light emitting display apparatus according to various embodiments of the present invention will be described with reference to FIGs. 1 to 4.

[0028] FIG. 1 is an equivalent circuit diagram showing an organic light emitting display apparatus according to various embodiments of the present invention, FIG. 2 is a sectional view showing each pixel area of FIG. 1, FIG. 3 is a detailed view showing a bus electrode, an adherent pattern and a separation pattern as illustrated in FIG. 2, and FIG. 4 is a sectional view showing a common pad as illustrated in FIG. 1.

[0029] As exemplarily shown in FIG. 1, the organic light emitting display apparatus 100 according to various embodiments of the present invention includes gate lines GL and data lines DL crossing each other to define a plurality of pixel areas PA, a plurality of thin film transistors TFT corresponding to the plurality of pixel areas PA, and a plurality of organic light emitting devices ED corresponding to the plurality of pixel areas PA.

[0030] The organic light emitting display apparatus 100 may further include a common pad CPD connected to the plurality of organic light emitting devices ED in common and also connected to an external circuit.

[0031] The plurality of organic light emitting devices ED is connected to the plurality of thin film transistor TFT one to one. Thus, each organic light emitting device ED emits light based on a drive current corresponding to a potential difference between the thin film transistor TFT and the common pad CPD.

[0032] As exemplarily shown in FIG. 2, each pixel area PA includes an emission area and a non-emission area. The term "emission area" refers to an area (of a pixel area PA) where light is emitted by an organic light emitting device ED, while the term "non-emission area" refers to an area (of the pixel area PA) where light is not emitted, for example an area including driving circuitry, e.g. one or more thin film transistors TFT, for driving the organic light emitting device ED in the emission area EA.

[0033] The organic light emitting display apparatus includes a substrate 111, the thin film transistor TFT formed on the substrate 111, a protection layer 113 covering the thin film transistor TFT, and an overcoat layer 114 evenly formed on the protection layer 113.

[0034] For example, the thin film transistor TFT includes a gate electrode GE formed on the substrate and connected to the gate line GL, a gate insulating layer 112 covering the gate electrode GE, an active layer ACT formed on the gate insulating layer 112 and overlapping the gate electrode GE, a source electrode SE and a drain electrode DE formed on the gate insulating layer 112 and separated from each other. The source electrode SE is in contact with a side of the active layer ACT, and the drain electrode DE is in contact with the other side of the active layer ACT. One of the source electrode SE and the drain electrode DE is connected to the data line DL, and the other one is connected to the organic light emit-

ting devices ED. For example, the source electrode SE is connected to the data line DL, and the drain electrode DE is connected to the organic light emitting devices ED.

[0035] However, Fig. 2 shows only an example of the thin film transistor TFT, the thin film transistor TFT according to various embodiments of the present invention may have another structure.

[0036] In addition, the organic light emitting display apparatus 100 further includes a first electrode 121 corresponding to the emission area EA of each pixel area PA, a bus electrode 122 corresponding to at least a portion of the non-emission area NEA of the plurality of pixel areas PA, a bank 123 covering a rim of the first electrode 121, an adherent pattern 124 formed on at least a portion of the bus electrode 122, a separation pattern 125 covering at least a portion of the adherent pattern 124 and having an inverted tapered cross section, an organic layer 126 formed on the first electrode 121, and a second electrode 127 formed on the organic layer 126.

[0037] At least a portion of the bus electrode 122 surrounding the adherent pattern 124 may be a crevice 125d. In the crevice 125d, the portion of bus electrode 122 is hidden by the separation pattern 125, such that the organic layer 126 is not formed by the separation pattern 125. That is, the organic layer 126 is formed on the first electrode 121, the bank 123 and the adherent pattern 124, but also on a remaining area of the bus electrode 122 except for the crevice 125d.

[0038] The second electrode 127 is formed on the organic layer 126, but also on the crevice 125d of the bus electrode 122. Therefore, the second electrode 127 is in contact with the bus electrode 122 by the crevice 125d.

[0039] The first electrode 121 is formed on the overcoat layer 114, and corresponds to the emission area EA of each pixel area PA. The first electrode 121 is connected to the thin film transistor TFT through a contact hole CT. The contact hole CT penetrates the protection layer 113 and the overcoat layer 114 to expose a portion of the drain electrode DE of the thin film transistor TFT.

[0040] The bus electrode 122 is formed on the overcoat layer 114, in the same manner as the first electrode 121. The bus electrode 122 corresponds to at least a portion of the non-emission area NEA of the plurality of pixel areas PA. The bus electrode 122 is spaced apart from the first electrode 121 not to connect with the first electrode 121. The bus electrode 122 is connected to the common pad (CPD of FIG. 1).

[0041] The first electrode 121 and the bus electrode 122 are formed of a conductive material.

[0042] In one example, when the organic light emitting display apparatus 100 is a bottom emission type, each of the first electrode 121 and the bus electrode 122 is formed of a transparent conductive material which has a work function similar to the organic layer 126.

[0043] Alternatively, when the organic light emitting display apparatus 100 is a top emission type, each of the first electrode 121 and the bus electrode 122 may be a stack of multiple layers including a reflective conductive

material. In one example, each of the first electrode 121 and the bus electrode 122 may include a first layer formed of any one of Al and Ag or an alloy thereof, and a second layer formed of a material having a work function similar to the organic layer 126. In this case, the second layer may be formed of Indium Tin Oxide (ITO). The second layer may be disposed between the first layer and the organic layer 126. The first layer may be disposed on the overcoat layer 114 and the second layer may be disposed on the first layer.

[0044] The first electrode 121 and the bus electrode 122 are formed of same material and same structure via only one mask process. However, it is to be understood that the first electrode 121 and the bus electrode 122 may be formed of different materials or may have different configurations via different processes.

[0045] In addition, although not shown in detail in FIG. 2, the bus electrode 122 may be patterned in various ways so long as it is insulated from the first electrode 121. The bus electrode 122 is spaced apart from the first electrode 121 by a given distance, and may be arranged in the same direction as at least one of the gate lines (GL of FIG. 1) and the data lines (DL of FIG. 1). For example, the bus electrode 122 may run parallel to the gate lines or parallel to the data lines. Or the bus electrode 122 may be formed in mesh-shape.

[0046] The bank 123 is formed on the overcoat layer 114. The bank 123 overlaps the rim of each of the first electrode 122 and bus electrode 122.

[0047] In addition, the bank 123 is formed of an organic material in consideration of adhesion to the organic layer 126. For example, the bank 123 may be formed of a polyimide-based material or photo-acryl. For example, at least one sidewall, e.g. sidewalls, of the bank 123 may be inclined with respect to an upper side or surface of the first electrode 121 and/or bus electrode 122. For example, an angle between the at least one sidewall or sidewalls of the bank 123 and the upper side or surface of the first electrode 121 and/or bus electrode 122 may be greater than 90°. For example, a base area or area of a bottom side or lower surface of the bank 123 may be larger than an area of the upper side or surface of the bank 123. The bank 123 may have a trapezoidal shaped cross section.

[0048] The bank 123 described above is configured to cover stepped portions of the first electrode 121 and bus electrode 122, thus preventing early deterioration of the organic layer 126 at the stepped portions of the first and bus electrodes 121, 122.

[0049] The adherent pattern 124 is formed on at least a portion of the bus electrode 122.

[0050] The adherent pattern 124 may be formed simultaneously with formation of the bank 123. That is, the adherent pattern 124 is formed of the same material as the bank 123 at the same layer as the bank 123, and has a tapered cross section similar to the bank 123. For example, at least one sidewall, e.g. sidewalls, of the adherent pattern 124 may be inclined with respect to an upper

side or surface of the bus electrode 122. For example, an angle between the at least one sidewall or sidewalls of the adherent pattern 124 and the upper side or surface of the bus electrode 122 may be greater than 90°. For example, a base area or area of a bottom side or lower surface of the adherent pattern 124 may be larger than an area of the upper side or surface of the adherent pattern 124. For example, the adherent pattern 124 may have a trapezoidal cross section. For example, the adherent pattern 124 may be formed of an organic material, e.g. an organic insulating material, e.g. a polyimide-based material or photo-acryl.

[0051] In other words, the bank 123 and the adherent pattern 124 may be formed simultaneously by patterning an organic material on the entire surface of the overcoat layer 114. As such, upper surfaces of the bank 123 and the adherent pattern 124 may have the same height on the basis of the overcoat layer 114.

[0052] As shown in FIG. 2 and FIG. 3A, the separation pattern 125 is formed to cover at least a top portion of the adherent pattern 124 and has an inverted tapered shape-cross section. In one or more embodiments, the term "inverted tapered shape" refers to a shape whose lateral cross-sectional area or diameter increases from a bottom side towards a top side of the shape. For example, with respect to the separation pattern 125, the term "inverted tapered shape" is understood as meaning that a lateral cross-sectional area or diameter of the separation pattern 125 proximate the bus electrode 122 (e.g., a base area or diameter of the separation pattern 125) is smaller than a lateral cross-sectional area or diameter of the separation pattern 125 distant from the bus electrode 122 (e.g., an area or diameter of a top side of the separation pattern 125). In one or more embodiments, the separation pattern 125 covers only at least a partial thickness of the adherent pattern 124 from an upper surface of the adherent pattern 124. Thus the separation pattern 125 comes into contact with at least a portion of the adherent pattern 124. In this regard, the separation pattern 125 is spaced apart from the bus electrode 122. For example, the separation pattern 125 may cover an upper side or surface of the adherent pattern 124 and a portion, e.g. an upper portion, of the at least one sidewall or sidewalls of the adherent pattern 124.

[0053] Alternatively, in an embodiment not forming part of the present invention and shown in FIG. 3B, the separation pattern 125 may be configured to cover the entire adherent pattern 124. In this regard, the separation pattern 125 is in contact with the bus electrode 122. For example, the separation pattern 125 may cover the upper surface and the at least one sidewall or sidewalls of the adherent pattern 124. In the present invention the separation pattern 125 is formed spaced from the bus electrode 122.

[0054] As the separation pattern 125 is formed to cover at least top portion of the adherent pattern 124, the height of an upper surface of the separation pattern 125 is higher than the height of the upper surface of each of the bank

123 and the adherent pattern 124 on the basis of the overcoat layer 114.

[0055] In addition, the separation pattern 125 has the inverted tapered shape-cross section having a wider width than the adherent pattern 124. Therefore, the separation pattern 125 serves as a shield covering at least a portion of the bus electrode 122 surrounding the adherent pattern 124 upon formation of the organic layer 126.

[0056] More specifically, as exemplarily shown in FIG. 3A and FIG. 3B, the cross section of the separation pattern 125 is the inverted tapered shape defined by an upper edge 125a, right and left side edges extending from the upper edge 125a to the bus electrode 122 along the adherent pattern 124. The each of the right and left side edges being inclined by two or more different gradients A1 and A2. The term "gradient" refers to a gradient or angle relative to an upper surface or top side of the bus electrode 122, for example a surface or side of the bus electrode 122, on which the adherent pattern 124 is formed. In this case, the separation pattern 125 may have a symmetrical cross section.

[0057] In one example, at least one side edge of the separation pattern 125 includes a first side 125b adjoining the upper edge 125a and inclined by a first gradient A1, and a second side 125c extending from the first side 125b to the bus electrode 122 along the adherent pattern 124 and inclined by a second gradient A2 smaller than the first gradient A1.

[0058] In this regards, the first gradient A1 may be greater than or equal to 45° , also smaller than or equal to 90° . ($45^\circ \leq A1 \leq 90^\circ$) The second gradient A2 may be greater than or equal to 0° , also smaller than the first gradient A1. ($0^\circ \leq A2 \leq A1$)

[0059] As mentioned above, the separation pattern 125 is formed to have wider width than that of the adherent pattern 124, and inversed tapered shape-cross section. Therefore, the crevice 125d of the bus electrode 122 which surrounds the adherent pattern 124 and is hidden by the separation pattern 125 is occurred.

[0060] Further, the second gradient A2 is closer to 0° , the width W_{CV} of the crevice 125d corresponding to the thickness of the separation pattern 125 is wider, and therefore the shield function of the separation pattern 125 is more useful.

[0061] In this case, the width W_{CV} of the crevice 125d is determined from a junction of the first and second sides 125b, 125c to the adherent pattern 124. That is, the crevice 125d is not extended to inside of the adherent pattern 124. Thus, the uniformity of the width W_{CV} of the crevice 125d is improved. As shown in FIG. 3A and FIG. 3B, each of the two side edges defining the cross-section of the separation pattern 125 may include the first side 125b and the second side 125c inclined by two different gradients. In accordance with other embodiments, at least one of the two side edges (e.g., both of the two side edges) defining the cross-section of the separation pattern 125 may include three or more sides inclined by three or

more different gradients, respectively.

[0062] In addition, the separation pattern 125 may be formed of various materials so long as such materials may be patterned into an inverted tapered shape having a side edge inclined by two or more gradients. One example of a patternable material may be a photopatternable material such as a photoresist. For example, the separation pattern 125 may be formed via activation of a negative photoresist material and developing or polarization of the same. For example, the separation pattern 125 is formed of a negative photoresist material selected from polyimide resin, polyacryl resin and novolac resin.

[0063] In the case which the separation pattern 125 is directly disposed on the bus electrode 122 without the adherent pattern 124 interposed therebetween, the separation pattern 125 may be peeled easily because of low adhesion between the separation pattern 125 and the bus electrode 122. This may deteriorate not only resolution due to spots, but also the reliability of the organic light emitting display apparatus.

[0064] However, in accordance with the present invention, the separation pattern 125 is disposed on the top portion of the adherent pattern 124, separated from the bus electrode 122. In addition, the adherent pattern 124 is formed of an organic material having higher adhesion to the separation pattern 125 than an inorganic material of the bus electrode 122. Therefore, the separation pattern 125 attains an attached portion equal to a contact area with the adherent pattern 124. In this way, peeling of the separation pattern 125 and deterioration of resolution due to spots may be prevented, and the reliability of the organic light emitting display apparatus may be improved.

[0065] In addition, it is unnecessary to increase the size of the separation pattern 125, i.e. cross sectional areas at upper and lower surfaces of the separation pattern 125, in order to improve the adhesion reliability of the separation pattern 125. Hence, the separation pattern 125 may have a reduced size, which may be advantageous to increase an opening ratio.

[0066] The width W_{CV} of the crevice 125d may be beyond a critical range by the adherent pattern 124. As a result, uniformity of the width W_{CV} of the crevice 125d may be improved, and connection reliability between the bus electrode 122 and the second electrode 127 through the crevice 125d may be improved.

[0067] As shown in FIG. 2, the organic layer 126 is formed on the first electrode 121, the bank 123 and the separation pattern 125, but also on the remaining area of the bus electrode 122 except for the crevice 125d. The organic layer 126 includes an emission layer (not shown) formed of an organic light emitting material.

[0068] The organic layer 126 is formed by anisotropic deposition method, and therefore not formed on the crevice 125d of the bus electrode 122 which is hidden by the separation pattern 125.

[0069] Although not shown in detail in FIGs. 2 and 3, the organic layer 126 may be a stack of multiple layers

formed of organic materials having different components or compositions. In one example, the organic layer 126 may be the stack of multiple layers including an electron injection layer, an electron transportation layer, the emission layer, a hole transportation layer, and a hole injection layer.

[0070] The second electrode 127 is formed on the organic layer 126. Since the second electrode 127 is formed by isotropic deposition method, such as Atomic Layer Deposition (ALD) or sputtering, the second electrode 127 is formed on the organic layer 126 but also on the crevice 125d of the bus electrode 122 in which the organic layer 126 is not formed by the separation pattern 125. Therefore, the second electrode 127 is electrically connected to the bus electrode 122 by the crevice 125d which is occurred by the separation pattern 125.

[0071] In this way, the organic light emitting device ED is formed on emission area EA of each pixel area PA and includes the first and second electrodes 121, 127 facing each other with the organic layer 126 interposed between the first and second electrodes 121, 127.

[0072] As exemplarily shown in FIG. 4, the common pad CPD is formed in a non-display region NA around a display region. The display region may be defined by the plurality of pixel areas PA. The common pad CPD may include a first pad layer CPD1 formed simultaneously with at least one of the gate lines GL and the data lines DL, and a second pad layer CPD2 formed on the overcoat layer 114. The second pad layer CPD2 may be formed simultaneously with the first electrode 121 and the bus electrode 122. In this case, the first and second pad layers CPD1, CPD2 are connected to each other via a contact hole penetrating the overcoat layer 114, the protection layer 113 and the gate insulating layer 112.

[0073] The second pad layer CPD2 of the common pad CPD continuously extends from the bus electrode 122 to achieve connection between the common pad CPD and the bus electrode 122.

[0074] Next, a manufacturing method of the organic light emitting display apparatus in accordance with various embodiments of the present invention will be described with reference to FIGs. 5, 6, and 7A to 7I.

[0075] FIG. 5 is a flowchart showing a manufacturing method of the organic light emitting display apparatus according to various embodiments of the present invention, FIG. 6 is a flowchart showing "formation of separation pattern" of FIG. 5, and FIGs. 7A to 7I are views showing the sequence of respective operations of FIGs. 5 and 6.

[0076] As exemplarily shown in FIG. 5, the manufacturing method of the organic light emitting display apparatus in accordance with various embodiments of the present invention includes forming the plurality of thin film transistors TFT corresponding to the plurality of pixel areas PA (S110), forming the first electrode 121 and the bus electrode 122 on the overcoat layer 114 which covers the plurality of thin film transistors TFT, the first electrode 121 corresponding to emission area EA of each pixel

area PA, the bus electrode 122 corresponding to at least a portion of the non-emission area NEA of the plurality of pixel areas PA (S120), forming the bank 123 overlapping the rim of the first electrode 121 on the overcoat layer 114 and forming the adherent pattern 124 on the at least a portion of the bus electrode 122 (S130), forming the separation pattern 125 covering at least a top portion of the adherent pattern 124 and having inverted-tapered cross section (S140), forming the organic layer 126 on the first electrode 121 and the separation pattern 125 and on the remaining portion of the bus electrode 122 except for the crevice 125d (S150), and forming the second electrode 127 connecting to the bus electrode 122 via the crevice 125d (S160).

[0077] As exemplarily shown in FIG. 6, formation of the separation pattern includes forming a material layer on the overcoat layer 114 to cover the first electrode 121, the bus electrode 122, the bank 123 and the adherent layer 124 (S141), selectively activating a portion of the material layer (S142) by a given thickness, and developing the activated material layer to form the separation pattern (S143).

[0078] As exemplarily shown in FIG. 7A, the plurality of thin film transistors TFT corresponding to the plurality of pixel areas PA are formed on the substrate 111. (S110)

[0079] For example, the formation of thin film transistor TFT includes forming the gate line GL and the gate electrode GE connecting to the gate line GL on the substrate 111, forming the gate insulating layer 112 covering the gate line GL and the gate electrode GE, forming the active layer ACT overlapping the gate electrode GE on the gate insulating layer 112, forming the data line DL intersecting the gate line GL, and forming the source electrode SE and the drain electrode DE being in contact with both sides of the active layer ACT and spaced apart from each other, forming the protection layer 113 to cover the data line DL, source electrode SE and drain electrode DE on the entire surface of the gate insulating layer 112, and forming the overcoat layer 114 on the protection layer 113 evenly. One of the source electrode SE and the drain electrode DE is connected to the data line DL.

[0080] The formation of thin film transistor TFT further includes forming the contact hole CT penetrating the protection layer 113 and the overcoat layer 114 to expose the other one of source electrode SE and the drain electrode DE not connecting to the data line DL, after the formation of the overcoat layer 114.

[0081] Although not shown, the first pad layer CPD1 is formed at the formation of the gate electrode GE or the formation of the source and drain electrodes SE, DE. The contact hole penetrating at least the protection layer 113 and the overcoat layer 114 to expose the first pad layer CPD is formed at the formation of the contact hole CT exposing the one of the source and drain electrodes SE, DE.

[0082] As exemplarily shown in FIG. 7B, the first electrode 121 corresponding to the emission area EA of each pixel area PA, and the bus electrode 122 corresponding

to at least a portion of the non-emission area NEA of the plurality of pixel areas PA are formed on the overcoat layer 114. (S120)

[0083] Formation of the first electrode 121 and bus electrode 122 (S120) includes forming a conductive film (not shown) on the entire surface of the overcoat layer 114, and patterning the conductive film (not shown) to form the first electrode 121 and bus electrode 122 insulated from each other.

[0084] In this case, the first electrode 121 is electrically connected to the thin film transistor TFT via the contact hole CT.

[0085] Alternatively, the bus electrode 122 may be formed to be mesh-shaped on the entire surface of the overcoat layer 114 is spaced apart from the first electrode 121 by a given distance.

[0086] The first electrode 121 and bus electrode 122 may be formed of a transparent conductive material.

[0087] Alternatively, when the organic light emitting display apparatus is a top emission type, the first electrode 121 and bus electrode 122 may take the form of a stack of multiple layers including a reflective conductive material. In one example, both of the first electrode 121 and bus electrode 122 may include a first layer formed of any one of Al and Ag or an alloy thereof, and a second layer formed of a material having a work function similar to the organic layer 126. In this case, the second layer may be formed of Indium Tin Oxide (ITO). The first layer may be disposed on the overcoat layer 114 and the second layer may be disposed on the first layer.

[0088] Although not shown, the second pad layer CPD2 may be formed at the formation of the first electrode 121 and the bus electrode 122. The second pad layer CPD2 is connected to the first pad layer CPD1 through the contact hole exposing the first pad layer CPD1.

[0089] As exemplarily shown in FIG. 7C, the bank 123 is formed on the overcoat layer 114. At the same time, the adherent pattern 124 is formed on the at least a portion of the bus electrode 122. (S130)

[0090] Formation of the bank 123 and the adherent pattern 124 (S130) includes forming an organic insulator film (not shown) covering the first electrode 121 and bus electrode 122 on the entire surface of the overcoat layer 114, and patterning the organic insulator film (not shown) to form the bank 123 and the adherent pattern 124.

[0091] In this case, the organic insulator film (not shown), i.e. the bank 123 and the adherent pattern 124 may be formed of a polyimide-based material or photoacryl.

[0092] The bank 123 and the adherent pattern 124, which are formed simultaneously by patterning the organic insulator film (not shown) using same mask processing, have upper surfaces having the same height. In addition, the bank 123 and the adherent pattern 124 may have a tapered shape in consideration of material characteristics of the organic insulator film (not shown).

[0093] As exemplarily shown in FIG. 7D, a material layer

er 130 is formed on the entire surface of the overcoat layer 114 to cover the bank 123 and the adherent pattern 124 (S141). In this case, the material layer 130 may be any one material selected from various materials, e.g. insulator materials, so long as the material may form an inverted-tapered structure having a side edge inclined by two or more different gradients, e.g. via activation and developing thereof.

[0094] For example, the material layer 130 may be formed of a negative photoresist material. The negative photoresist material is one selected from novolak group, polyimide group and polyacryl group. In one or more embodiments, activating the material (e.g., photoresist) may include exposing the material to light.

[0095] As exemplarily shown in FIG. 7E, in a state in which a mask 200 is aligned on the material layer 130, light is emitted to the material layer 130 to activate a portion of the material layer 130 by a given thickness TH_I (S142).

[0096] The mask 200 includes an opening 302 corresponding to a portion of the bus electrode 122 surrounding the adherent pattern 124 and a shielding portion 301 being a peripheral region of the opening 302. For example, the opening 302 may correspond to at least the portion of the bus electrode 122, on which the adherent pattern 124 is disposed.

[0097] Upon activation of the material layer 130 (S142), a process time for which the portion 131 of the material layer 130 is exposed by light is adjusted such that the thickness TH_I of the portion 131 of the material layer 130 activated by light is less than the entire thickness TH_A of the material layer 130.

[0098] In one example, the thickness TH_I of the activated portion 131 of the material layer 130 may be less than the thickness TH_A' of the material layer 130 stacked on the adherent pattern 124. That is, the activated portion 131 of the material layer 130 is spaced apart from the adherent pattern 124.

[0099] Because the thickness TH_I of the activated portion 131 of the material layer 130 is less than the entire thickness TH_A of the material layer 130, the separation pattern 125 having a side edge inclined by two or more different gradients is formed. In other words, if the thickness TH_I of the activated portion 131 of the material layer 130 is identical to the entire thickness TH_A of the material layer 130, the separation pattern 125 having the side edge inclined by only one gradient is formed.

[0100] Next, the activated material layer portion (131 of FIG. 7E) is subjected to developing, such that the separation pattern 125 is formed. (S143) In one or more embodiments, developing may be effected by heating.

[0101] For example, as exemplarily shown in FIG. 7F, when the activated portion (131 of FIG. 7E) of the material layer 130 is heated, the activated portion is polymerized. At the same time, a portion of the activated portion 131 or a polymerized portion 132 of the material layer 130 is moved to the adherent pattern 124. Therefore, the separation pattern 125 which is formed of polymerized por-

tion 132 of the material layer 130 has the side edge inclined by two or more different gradients.

[0102] Next, the remaining portion of the material layer 130 except for the polymerized portion 132 is removed.

[0103] Thereby, as exemplarily shown in FIG. 7G, the separation pattern 125 covering at least top portion of the adherent pattern 124 and having the inverted-tapered shape cross section is formed.

[0104] In one example, at least one side edge of the separation pattern 125 includes a first side 125b adjoining the upper edge 125a and inclined by a first gradient A1, and a second side 125c extending from the first side 125b to the bus electrode 122 along the adherent pattern 124 and inclined by a second gradient A2 smaller than the first gradient A1.

[0105] In this regards, the first gradient A1 may be greater than or equal to 45° , also smaller than or equal to 90° . ($45^\circ \leq A1 \leq 90^\circ$) The second gradient A2 may be greater than or equal to 0° , also smaller than the first gradient A1. ($0^\circ \leq A2 \leq A1$)

[0106] The first and second gradient A1, A2 correspond to a process time for activating the portion 131 of the material layer 130 (S142) and a process time for developing the portion 132 of the material layer 130 (S143).

[0107] In this way, the crevice 125d having a given width W_{CV} is occurred by the separation pattern 125. the crevice 125d corresponds to at least a portion of the bus electrode 122 surrounding the adherent pattern 124 and being hidden by the separation pattern 125 in the vertical direction.

[0108] Next, as exemplarily shown in FIG. 7H, the organic layer 126 is formed on the first electrode 121, the bank 123 and the separation pattern 125. But also, the organic layer 125 is formed on the remaining area of the bus electrode 122 except for the crevice 125d. (S150).

[0109] In the formation of the organic layer 126 (S150), the organic layer 126 is formed by the anisotropic deposition method, therefore, the organic layer 126 is not formed on a portion of the bus electrode 122 corresponding to the crevice 125d. That is, the crevice 125d of the bus electrode 122 is hidden by the separation pattern 125, and therefore the organic layer 126 is not formed on the crevice 125d of the bus electrode 122 such that the crevice 125d of the bus electrode 122 is exposed.

[0110] Though not shown in FIG. 7H, the organic layer 126 may be the stack of multiple layers including an electron injection layer, an electron transportation layer, the emission layer, a hole transportation layer, and a hole injection layer which are formed of organic materials having different components or compositions.

[0111] As exemplarily shown in FIG. 7I, a conductive material is stacked on the entire surface of the organic layer 126 to form the second electrode 127 (S160).

[0112] In the formation of the second electrode 127 (S160), the second electrode 127 is formed by the isotropic deposition method, such as Atomic Layer Deposition (ALD) or sputtering. Therefore, the second electrode 127 is formed on the organic layer 126 but also on the

crevice 125d of the bus electrode 122 in which the organic layer 126 is not formed by the separation pattern 125. Thereby, the second electrode 127 and the bus electrode 122 are connected to each other via the crevice 125d.

[0113] As is apparent from the above description, the organic light emitting display apparatus in accordance with various embodiments includes the bus electrode 122 to reduce a resistance of the second electrode 127 formed on the entire surface thereof, and the separation pattern 125 to create the crevice 125d where the organic layer 126 is not formed. Thereby, connection between the bus electrode 122 and the second electrode 127 may be accomplished without patterning of the organic layer 126. The second electrode 127 connected to the bus electrode 122 may exhibit a reduced resistance, which may prevent deterioration of brightness and increased power consumption due to a high resistance of the second electrode 127.

[0114] In addition, the separation pattern 125 is formed to cover at least top portion of the adherent pattern 124 which is formed on a portion of the bus electrode 122. That is, the separation pattern 125 is adhered to the adherent pattern 124, rather than the bus electrode 122. This may prevent easy peeling of the separation pattern 125 and deterioration of resolution due to spots. Moreover, the width W_{CV} of the crevice 125d defined by the separation pattern 125 may be restricted to a given range by the adherent pattern 124, which may provide improved uniformity of the width of the crevice 125d. As a result, connection reliability between the bus electrode 122 and the second electrode 127 may be improved, and consequently reliability of the organic light emitting display apparatus may be improved.

[0115] It will be apparent that, although the preferred embodiments have been shown and described above, the invention is not limited to the above-described specific embodiments, and various modifications and variations can be made by those skilled in the art without departing from the scope of the invention defined in the appended claims.

Claims

1. An organic light emitting display apparatus (100), comprising:
 - a plurality of pixel areas (PA), each pixel area (PA) comprising an emission area (EA) and a non-emission area (NEA);
 - a first electrode (121) formed in the emission area (EA);
 - a bus electrode (122) formed in the non-emission area (NEA);
 - a bank (123) overlapping a rim of the first electrode (121) and a rim of the bus electrode (122);
 - an adherent pattern (124) formed on a portion of the bus electrode (122) exposed by the bank

- and being spaced from the bank (123);
 a separation pattern (125) formed on at least a portion of the adherent pattern (124), the separation pattern (125) having an inverted tapered shape;
 an organic layer (126) formed on the first electrode (121), on the separation pattern (125) and on the bank (123) and comprising an emission layer, and
 a second electrode (127) formed on the organic layer (126), wherein the second electrode (127) is further formed on a portion of the bus electrode (122) exposed by the separation pattern (125), so that the second electrode (127) is electrically in contact with the bus electrode (122), **characterized in that** the separation pattern (125) is spaced from the bus electrode (122).
2. The organic light emitting display apparatus (100) of claim 1, wherein a portion of the organic layer (126) is formed on the bus electrode (122), and wherein the second electrode (127) is formed on a portion of the bus electrode (122) exposed by the organic layer (126).
 3. The organic light emitting display apparatus (100) of any one of claims 1 or 2, wherein a cross-section of the separation pattern (125) comprises an upper edge (125a) and two side edges extending from the upper edge (125a) to the adherent pattern (124), wherein at least one of the two side edges is inclined by two or more gradients, wherein, preferably, the cross-section is symmetrical.
 4. The organic light emitting display apparatus (100) of claim 3, wherein the at least one of the two side edges comprises a first side (125b) adjoining the upper edge (125a) and inclined by a first gradient, and a second side (125c) extending from the first side (125b) to the adherent pattern (124) and inclined by a second gradient smaller than the first gradient.
 5. The organic light emitting display apparatus (100) of claim 4, wherein the first gradient is greater than or equal to 45° and smaller than or equal to 90°, wherein the second gradient is greater than or equal to 0° and smaller than the first gradient.
 6. The organic light emitting display apparatus (100) of any one of claims 1 to 5, wherein the separation pattern (125) comprises a photopatternable material, wherein, preferably, the photopatternable material is a photoresist, further preferably a negative photoresist.
 7. The organic light emitting display apparatus (100) of any one of claims 1 to 6, wherein the adherent pattern (124) has a tapered shape comprising a top side and inclined sidewalls, wherein the top side and at least a portion of the inclined sidewalls of the adherent pattern (124) are inserted into the separation pattern (125), wherein, preferably, the adherent pattern has a trapezoidal cross-section.
 8. The organic light emitting display apparatus (100) of any one of claims 1 to 7, wherein the adherent pattern (124) and the bank (123) are formed of the same material and of the same layer, wherein, preferably, the adherent pattern (124) and the bank (123) are formed of an organic material, wherein, further preferably, the organic material is a polyimide-based material or photo-acryl, wherein, still further preferably, the adherent pattern (124) and the bank (123) have the same height.
 9. The organic light emitting display apparatus (100) of any one of claims 1 to 8, further comprising:
 - a plurality of thin film transistors (TFT) formed on the substrate (111), each thin film transistor (TFT) corresponding to a respective pixel area (PA), and
 - an overcoat layer (114) formed on the substrate (111) evenly to cover the plurality of the thin film transistor (TFT),
 - wherein the first electrode (121) and the bus electrode (122) are formed on the overcoat layer (114),
 - wherein, preferably, the first electrode (121) is connected to a thin film transistor (TFT) of the plurality of thin film transistors (TFT),
 - wherein, further preferably, each thin film transistor (TFT) is formed in the non-emission area (NEA) of the respective pixel area (PA).
 10. A method of manufacturing an organic light emitting display apparatus (100), the method comprising:
 - forming a plurality of thin film transistors (TFT) on a substrate (111);
 - forming an overcoat layer (114) covering the plurality of thin film transistors (TFT) evenly;
 - forming a first electrode (121) and a bus electrode (122) on the overcoat layer (114), wherein the first electrode (121) is formed in an emission area (EA) of a pixel area (PA), and the bus electrode (122) is formed in a non-emission area (NEA) of the pixel area (PA) and spaced from the first electrode (121);
 - forming a bank (123) and an adherent pattern (124) on the overcoat layer (114), wherein the bank overlaps a rim of the first electrode (121) and a rim of the bus electrode (122), and wherein

- the adherent pattern (124) is spaced from the bank (123) and formed on a portion of the bus electrode (122);
forming a separation pattern (125) on at least a portion of the adherent pattern (124) to adhere the separation pattern (125) to the adherent pattern (124), the separation pattern (125) having an inverted tapered shape;
forming an organic layer (126) on the first electrode (121), on the bank and on the separation pattern (125), the organic layer (126) comprising an emission layer, and
forming a second electrode (127) on the organic layer (126), wherein the second electrode (127) is further formed on a portion of the bus electrode (122) exposed by the separation pattern (125) and by the adherent pattern (124) so that the second electrode (127) is electrically in contact with the bus electrode (122),
wherein the separation pattern (125) is spaced from the bus electrode (122).
11. The method of claim 10, wherein the organic layer (126) is formed on the first electrode (121) and the separation pattern (125), using the separation pattern (125) as a shield covering at least a portion of the bus electrode (122).
12. The method of claim 10 or 11, wherein forming the separation pattern (125) comprises:
- forming a material layer (130) over an entire surface of the overcoat layer (114);
selectively activating a portion of the material layer (130), which is disposed over the adherent pattern (124), by a given thickness (TH_I), wherein selectively activating a portion of the material layer (130) comprises exposing the portion of the material layer to light; and
developing the activated portion (131) of the material layer (130) to form the separation pattern (125).
13. The method of any one of claims 10 to 12, wherein the organic layer (126) is not formed on a portion of the bus electrode (122) corresponding to a crevice (125d) hidden by the separation pattern (125), and wherein the second electrode (127) is formed on the portion of the bus electrode (122) corresponding to the crevice (125d) where the organic layer (126) is not formed.
14. The method of claim 13, wherein a cross-section of the separation pattern (125) comprises an upper edge (125a) and two side edges extending from the upper edge (125a) to the adherent pattern (124), wherein at least one of the two side edges is inclined by two or more gradients, and

wherein the at least one of the two side edges comprises a first side (125b) adjoining the upper edge (125a) and inclined by a first gradient, and a second side (125c) extending from the first side (125b) to the adherent pattern (124) and inclined by a second gradient smaller than the first gradient.

Patentansprüche

1. Ein organischer lichtemittierender Anzeige-Apparat (100), aufweisend:
- eine Vielzahl von Pixelgebieten (PA), wobei jedes Pixelgebiet (PA) ein Emissionsgebiet (EA) und ein Nicht-Emissionsgebiet (NEA) aufweist; eine erste Elektrode (121), die in dem Emissionsgebiet (EA) ausgebildet ist;
eine Bus-Elektrode (122), die in dem Nicht-Emissionsgebiet (NEA) ausgebildet ist;
einen Damm (123), der einen Rand der ersten Elektrode (121) und einen Rand der Bus-Elektrode (122) überlappt;
eine Haftstruktur (124), die auf einem Teilbereich der Bus-Elektrode (122), der von dem Damm freigelegt ist, ausgebildet ist und von dem Damm (123) beabstandet ist;
eine Trennstruktur (125), die mindestens auf einem Teilbereich der Haftstruktur (124) ausgebildet ist, wobei die Trennstruktur (125) eine umgekehrt verjüngte Form aufweist;
eine organische Schicht (126), die auf der ersten Elektrode (121), auf der Trennstruktur (125) und auf dem Damm (123) ausgebildet ist und eine Emissionsschicht aufweist, und
eine zweite Elektrode (127), die auf der organischen Schicht (126) ausgebildet ist, wobei die zweite Elektrode (127) ferner auf einem Teilbereich der Bus-Elektrode (122), der von der Trennstruktur (125) freigelegt ist, ausgebildet ist, so dass die zweite Elektrode (127) elektrisch mit der Bus-Elektrode (122) in Kontakt ist,
dadurch gekennzeichnet, dass
die Trennstruktur (125) von der Bus-Elektrode (122) beabstandet ist.
2. Der organische lichtemittierende Anzeige-Apparat (100) gemäß Anspruch 1, wobei ein Teilbereich der organischen Schicht (126) auf der Bus-Elektrode (122) ausgebildet ist, und wobei die zweite Elektrode (127) auf einem Teilbereich der Bus-Elektrode (122), der von der organischen Schicht (126) freigelegt ist, ausgebildet ist.
3. Der organische lichtemittierende Anzeige-Apparat (100) gemäß einem der Ansprüche 1 oder 2, wobei ein Querschnitt der Trennstruktur (125) eine obere Kante (125a) und zwei Seitenkanten, die sich von

- der oberen Kante (125a) bis zu der Haftstruktur (124) erstrecken, aufweist, wobei mindestens eine der zwei Seitenkanten mit zwei oder mehreren Steigungen geneigt ist,
wobei vorzugsweise der Querschnitt symmetrisch ist. 5
4. Der organische lichtemittierende Anzeige-Apparat (100) gemäß Anspruch 3,
wobei die mindestens eine der zwei Seitenkanten eine erste Seite (125b) aufweist, die an die obere Kante (125a) angrenzt und mit einer ersten Steigung geneigt ist, und eine zweite Seite (125c), die sich von der ersten Seite (125b) bis zu der Haftstruktur (124) erstreckt und mit einer zweiten Steigung geneigt ist, die kleiner ist als die erste Steigung. 10
5. Der organische lichtemittierende Anzeige-Apparat (100) gemäß Anspruch 4,
wobei die erste Steigung größer als oder gleich 45° und kleiner als oder gleich 90° ist,
wobei die zweite Steigung größer als oder gleich 0° und kleiner als die erste Steigung ist. 15
6. Der organische lichtemittierende Anzeige-Apparat (100) gemäß einem der Ansprüche 1 bis 5,
wobei die Trennstruktur (125) ein photostrukturierbares Material aufweist,
wobei vorzugsweise das photostrukturierbare Material ein Photoresist ist, ferner vorzugsweise ein negativer Photoresist. 20
7. Der organische lichtemittierende Anzeige-Apparat (100) gemäß einem der Ansprüche 1 bis 6,
wobei die Haftstruktur (124) eine verjüngte Form hat, die eine Oberseite und schräge Seitenwände aufweist, wobei die Oberseite und mindestens ein Teilbereich der schrägen Seitenwände der Haftstruktur (124) in die Trennstruktur (125) eingefügt sind,
wobei vorzugsweise die Haftstruktur einen trapezförmigen Querschnitt hat. 25
8. Der organische lichtemittierende Anzeige-Apparat (100) gemäß einem der Ansprüche 1 bis 7,
wobei die Haftstruktur (124) und der Damm (123) aus dem gleichen Material und aus der gleichen Schicht ausgebildet sind,
wobei vorzugsweise die Haftstruktur (124) und der Damm (123) aus einem organischen Material ausgebildet sind,
wobei ferner vorzugsweise das organische Material ein Material auf Polyimidbasis oder Photoacryl ist, wobei noch weiter vorzugsweise die Haftstruktur (124) und der Damm (123) die gleiche Höhe haben. 30
9. Der organische lichtemittierende Anzeige-Apparat (100) gemäß einem der Ansprüche 1 bis 8, ferner aufweisend: 35
- eine Vielzahl von Dünnschicht-Transistoren (TFT), die auf dem Substrat (111) ausgebildet sind, und wobei jeder Dünnschicht-Transistor (TFT) zu einem jeweiligen Pixelgebiet (PA) korrespondiert, und
eine Mantelschicht (114), die auf dem Substrat (111) gleichmäßig ausgebildet ist, so dass die Vielzahl von Dünnschicht-Transistoren (TFT) bedeckt ist,
wobei die erste Elektrode (121) und die Bus-Elektrode (122) auf der Mantelschicht (114) ausgebildet sind,
wobei vorzugsweise die erste Elektrode (121) mit einem Dünnschicht-Transistor (TFT) der Vielzahl von Dünnschicht-Transistoren (TFT) verbunden ist,
wobei ferner vorzugsweise jeder Dünnschicht-Transistor (TFT) in dem Nicht-Emissionsgebiet (NEA) des jeweiligen Pixelgebiets (PA) ausgebildet ist. 40
10. Ein Verfahren zur Herstellung eines organischen lichtemittierenden Anzeige-Apparates (100), das Verfahren aufweisend:
- Bilden einer Vielzahl von Dünnschicht-Transistoren (TFT) auf einem Substrat (111);
Bilden einer Mantelschicht (114), die die Vielzahl von Dünnschicht-Transistoren (TFT) gleichmäßig bedeckt;
Bilden einer ersten Elektrode (121) und einer Bus-Elektrode (122) auf der Mantelschicht (114), wobei die erste Elektrode (121) in einem Emissionsgebiet (EA) eines Pixelgebiets (PA) ausgebildet wird, und die Bus-Elektrode (122) in einem Nicht-Emissionsgebiet (NEA) des Pixelgebiets (PA) ausgebildet wird und von der ersten Elektrode (121) beabstandet ist;
Bilden eines Damms (123) und einer Haftstruktur (124) auf der Mantelschicht (114), wobei der Damm einen Rand der ersten Elektrode (121) und einen Rand der Bus-Elektrode (122) überlappt, und wobei die Haftstruktur (124) von dem Damm (123) beabstandet ist und auf einem Teilbereich der Bus-Elektrode (122) ausgebildet wird;
Bilden einer Trennstruktur (125) zumindest auf einem Teilbereich der Haftstruktur (124), so dass die Trennstruktur (125) an der Haftstruktur (124) haftet, wobei die Trennstruktur (125) eine umgekehrt verjüngte Form aufweist;
Bilden einer organischen Schicht (126) auf der ersten Elektrode (121), auf dem Damm und auf der Trennstruktur (125), wobei die organische Schicht (126) eine Emissionsschicht aufweist, und
Bilden einer zweiten Elektrode (127) auf der organischen Schicht (126), wobei die zweite Elek- 45
- 50
- 55

- trode (127) ferner auf einem Teilbereich der Bus-Elektrode (122), der von der Trennstruktur (125) und von der Haftstruktur (124) freigelegt ist, ausgebildet wird, so dass die zweite Elektrode (127) elektrisch mit der Bus-Elektrode (122) in Kontakt ist, wobei die Trennstruktur (125) von der Bus-Elektrode (122) beabstandet ist.
11. Das Verfahren gemäß Anspruch 10, wobei die organische Schicht (126) auf der ersten Elektrode (121) und der Trennstruktur (125) ausgebildet wird, wobei die Trennstruktur als Abschirmung, die mindestens einen Teilbereich der Bus-Elektrode (122) abdeckt, genutzt wird.
12. Das Verfahren gemäß Anspruch 10 oder 11, wobei das Bilden der Trennstruktur (125) aufweist:
- Bilden einer Materialschicht (130) über einer gesamten Fläche der Mantelschicht (114); selektives Aktivieren eines Teilbereichs der Materialschicht (130), der über der Haftstruktur (124) angeordnet ist, auf eine gegebene Dicke (TH_I), wobei selektives Aktivieren eines Teilbereichs der Materialschicht (130) aufweist, den Teilbereich der Materialschicht Licht auszusetzen; und Entwickeln des aktivierten Teilbereichs (131) der Materialschicht (130), um die Trennstruktur (125) auszubilden.
13. Das Verfahren gemäß einem der Ansprüche 10 bis 12, wobei die organische Schicht (126) auf einem Teilbereich der Bus-Elektrode (122), der zu einem von der Trennstruktur (125) verdeckten Spalt (125d) korrespondiert, nicht ausgebildet wird, und wobei die zweite Elektrode (127) auf dem Teilbereich der Bus-Elektrode (122), der zu dem Spalt (125d) korrespondiert, wo die organische Schicht (126) nicht ausgebildet wird, ausgebildet wird.
14. Das Verfahren gemäß Anspruch 13, wobei ein Querschnitt der Trennstruktur (125) eine obere Kante (125a) und zwei Seitenkanten, die sich von der oberen Kante (125a) bis zu der Haftstruktur (124) erstrecken, aufweist, wobei mindestens eine der zwei Seitenkanten mit zwei oder mehreren Steigungen geneigt ist, und wobei die mindestens eine der zwei Seitenkanten eine erste Seite (125b) aufweist, die an die obere Kante (125a) angrenzt und mit einer ersten Steigung geneigt ist, und eine zweite Seite (125c), die sich von der ersten Seite (125b) bis zu der Haftstruktur (124) erstreckt und mit einer zweiten Steigung geneigt ist, die kleiner ist als die erste Steigung.

Revendications

- Appareil d'affichage luminescent organique (100) comprenant :
 - une pluralité de zones de pixels (PA), chaque zone de pixels (PA) comprenant une zone d'émission (EA) et une zone de non-émission (NEA) ;
 - une première électrode (121) formée dans la zone d'émission (EA) ;
 - une électrode de bus (122) formée dans la zone de non-émission (NEA) ;
 - une rive (123) superposée à un bord de la première électrode (121) et à un bord de l'électrode de bus (122) ;
 - un motif adhésif (124) formé sur une portion de l'électrode de bus (122) exposée par la rive et espacé de la rive (123) ;
 - un motif de séparation (125) formé sur au moins une portion du motif adhésif (124), le motif de séparation (125) présentant une forme conique ;
 - une couche organique (126) formée sur la première électrode (121), sur le motif de séparation (125) et sur la rive (123) et comprenant une couche d'émission et
 - une deuxième électrode (127) formée sur la couche organique (126), la deuxième électrode (127) étant en outre formée sur une portion de l'électrode de bus (122) exposée par le motif de séparation (125) de façon à ce que la deuxième électrode (127) soit électriquement en contact avec l'électrode de bus (122),

caractérisé en ce que
le motif de séparation (125) est espacé de l'électrode de bus (122).
- Appareil d'affichage luminescent organique (100) selon la revendication 1, dans lequel une portion de la couche organique (126) est formée sur l'électrode de bus (122) et dans lequel la deuxième électrode (127) est formée sur une portion de l'électrode de bus (122) exposée par la couche organique (126).
- Appareil d'affichage luminescent organique (100) selon l'une des revendications 1 ou 2, dans lequel une section transversale du motif de séparation (125) comprend une arête supérieure (125a) et deux arêtes latérales s'étendant à partir de l'arête supérieure (125a) vers le motif adhésif (124), au moins une des deux arêtes latérales étant inclinée de deux gradients ou plus, de préférence la section transversale étant symétrique.
- Appareil d'affichage luminescent organique (100)

- selon la revendication 3, dans lequel l'au moins uns des deux arêtes latérales comprend un premier côté (125b) adjacent à l'arête supérieure (125a) et étant incliné d'un premier gradient et un deuxième côté (125c) s'étendant du premier côté (125b) vers le motif adhésif (124) et étant incliné d'un deuxième gradient inférieur au premier gradient.
- 5
- 10
- 15
- 20
- 25
- 30
- 35
- 40
- 45
- 50
- 55
- ment (114), de préférence, la première électrode (121) étant connectée à un transistor à film mince (TFT) de la pluralité de transistors à films minces (TFT), de préférence, chaque transistor à film mince (TFT) étant formé dans la zone de non-émission (NEA) de la zone de pixels (PA) respective.
10. Procédé de fabrication d'un appareil d'affichage luminescent organique (100), ce procédé comprenant :
- la formation d'une pluralité de transistors à films minces (TFT) sur un substrat (111) ;
- la formation d'une couche de recouvrement (114) recouvrant la pluralité de transistors à films minces (TFT) de manière uniforme ;
- la formation d'une première électrode (121) et d'une électrode de bus (122) sur la couche de recouvrement (114), la première électrode (121) étant formée dans une zone d'émission (EA) d'une zone de pixels (PA) et l'électrode de bus (122) étant formée dans une zone de non-émission (NEA) de la zone de pixels (PA) et étant espacée de la première électrode (121) ;
- la formation d'une rive (123) et d'un motif adhésif (124) sur la couche de recouvrement (114), la rive se superposant à un bord de la première électrode (121) et à un bord de l'électrode de bus (122), et le motif adhésif (124) étant espacé de la rive (123) et étant formé sur une portion de l'électrode de bus (122) ;
- la formation d'un motif de séparation (125) sur au moins une portion du motif adhésif (124) afin de coller le motif de séparation (125) au motif adhésif (124), le motif de séparation (125) présentant une forme conique inversée ;
- la formation d'une couche organique (126) sur la première électrode (121), sur la rive et sur le motif de séparation (125), la couche organique (126) comprenant une couche d'émission et la formation d'une deuxième électrode (127) sur la couche organique (126), la deuxième électrode (127) étant en outre formée sur une portion de l'électrode de bus (122) exposée par le motif de séparation (125) et par le motif adhésif (124), de façon à ce que la deuxième électrode (127) soit en contact électrique avec l'électrode de bus (122),
- le motif de séparation (125) étant espacé de l'électrode de bus (122).
11. Procédé selon la revendication 10, dans lequel la couche organique (126) est formée sur la première électrode (121) et le motif de séparation (125), en utilisant le motif de séparation (125) comme un bouclier recouvrant au moins une portion de l'électrode de bus (122).
5. Appareil d'affichage luminescent organique (100) selon la revendication 4, dans lequel le premier gradient est supérieur ou égal à 45° et inférieur ou égal à 90°, le deuxième gradient étant supérieur ou égal à 0° et inférieur au premier gradient.
6. Appareil d'affichage luminescent organique (100) selon l'une des revendications 1 à 5, dans lequel le motif de séparation (125) comprend un matériau photomodélable, de préférence le matériau photomodélable étant une photorésine, de préférence une photorésine négative.
7. Appareil d'affichage luminescent organique (100) selon l'une des revendications 1 à 6, dans lequel le motif adhésif (124) présente une forme conique comprend un côté supérieur et des parois latérales inclinées, le côté supérieur et au moins une portion des parois latérales inclinées du motif de séparation (124) étant insérés dans le motif de séparation (125), de préférence le motif adhésif présentant une section transversale trapézoïdale.
8. Appareil d'affichage luminescent organique (100) selon l'une des revendications 1 à 7, dans lequel le motif adhésif (124) et la rive (123) sont constitués du même matériau et de la même couche, de préférence le motif adhésif (124) et la rive (123) étant constitués d'un matériau organique, de préférence le matériau organique étant un matériau à base de polyimide un photoacrylique, de préférence le motif adhésif (124) et la rive (123) présentant la même hauteur.
9. Appareil d'affichage luminescent organique (100) selon l'une des revendications 1 à 8, comprenant en outre :
- une pluralité de transistors à films minces (TFT) formés sur le substrat (111), chaque transistor à film mince (TFT) correspondant à une zone de pixels (PA) respective et
- une couche de recouvrement (114) formée sur le substrat (111) de manière uniforme pour recouvrir la pluralité de transistors à films minces (TFT),
- la première électrode (121) et l'électrode de bus (122) étant formées sur la couche de recouvre-

12. Procédé selon la revendication 10 ou 11, dans lequel la formation du motif de séparation (125) comprend :
- la formation d'une couche de matériau (130) sur toute la surface de la couche de recouvrement (114) ; 5
 - l'activation sélective d'une portion de la couche de matériau (130), qui est disposée au-dessus du motif adhésif (124), sur une épaisseur donnée (TH_I), l'activation sélective d'une portion de la couche de matériau (130) comprenant l'exposition de la portion de la couche de matériau à la lumière ; et 10
 - le développement de la portion activée (131) de la couche de matériau (130) afin de former le motif de séparation (125). 15
13. Procédé selon l'une des revendications 10 à 12, dans lequel la couche organique (126) n'est pas formée sur une portion de l'électrode de bus (122) correspondant à une fissure (125d) dissimulée par le motif de séparation (125) et 20
- dans lequel la deuxième électrode (127) est formée sur la portion de l'électrode de bus (122) correspondant à la fissure (125d) où la couche organique (126) n'est pas formée. 25
14. Procédé selon la revendication 13, dans lequel une section transversale du motif de séparation (125) comprend une arête supérieure (125a) et deux arêtes latérales s'étendant de l'arête supérieure (125a) vers le motif adhésif (124), au moins une des deux arêtes latérales étant inclinée de deux gradients ou plus et 30
- dans lequel l'au moins une des deux arêtes latérales comprend un premier côté (125b) adjacent à l'arête supérieure (125a) et incliné d'un premier gradient, et un deuxième côté (125c) s'étendant du premier côté (125b) vers le motif adhésif (124) et incliné d'un deuxième gradient inférieur au premier gradient. 35 40

45

50

55

FIG. 1

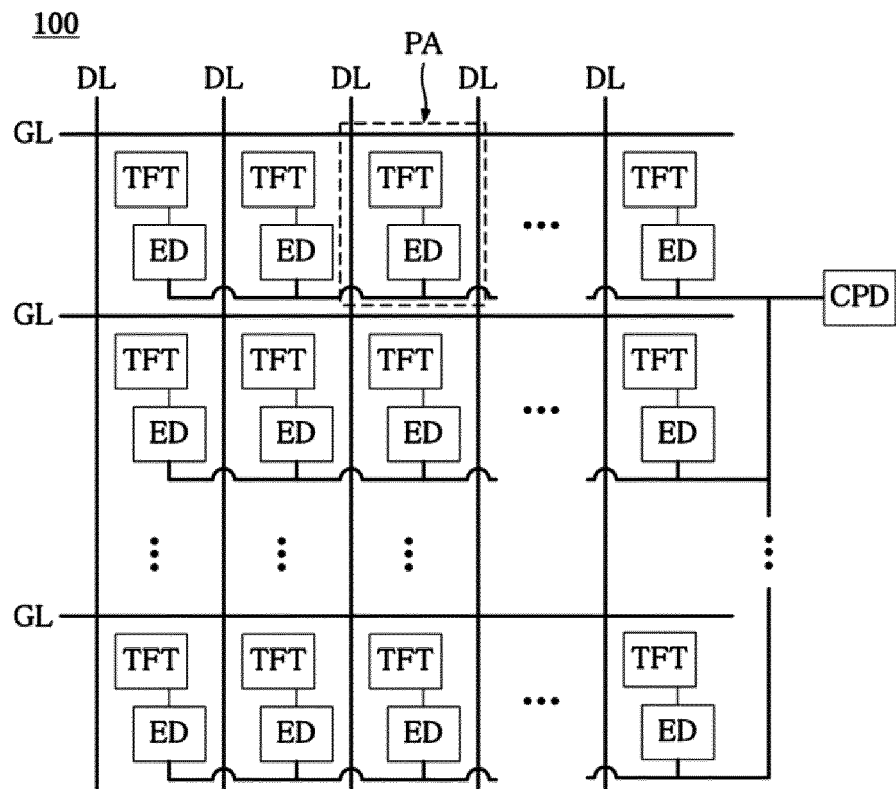


FIG. 2

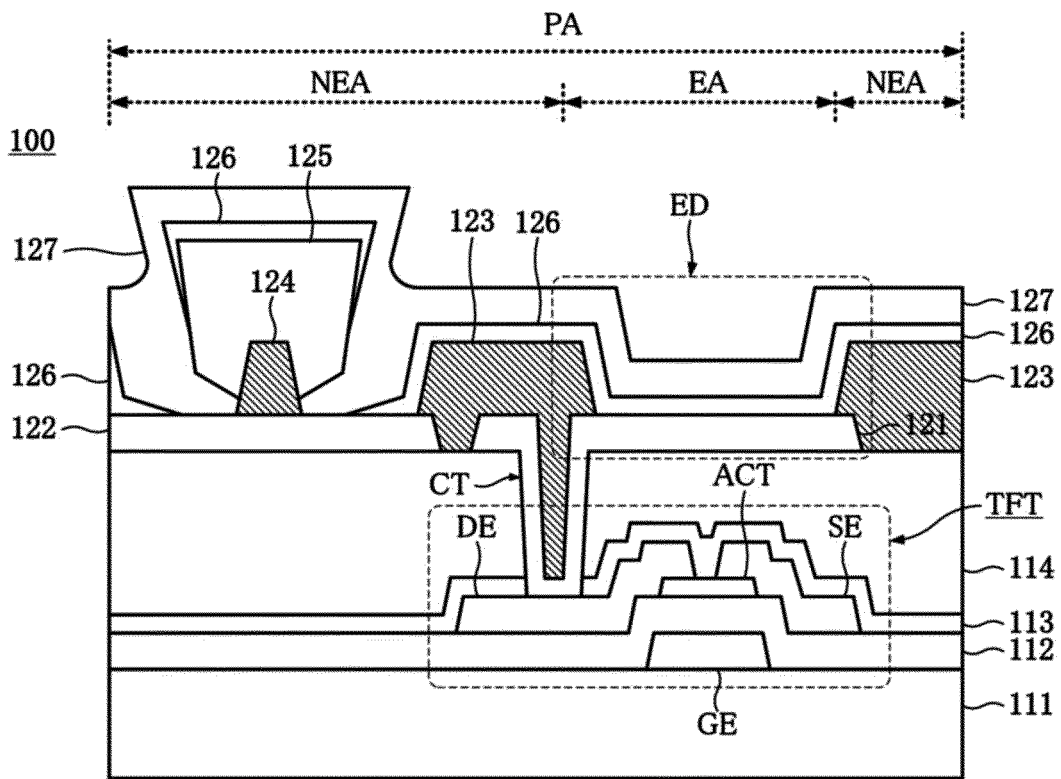


FIG. 3A

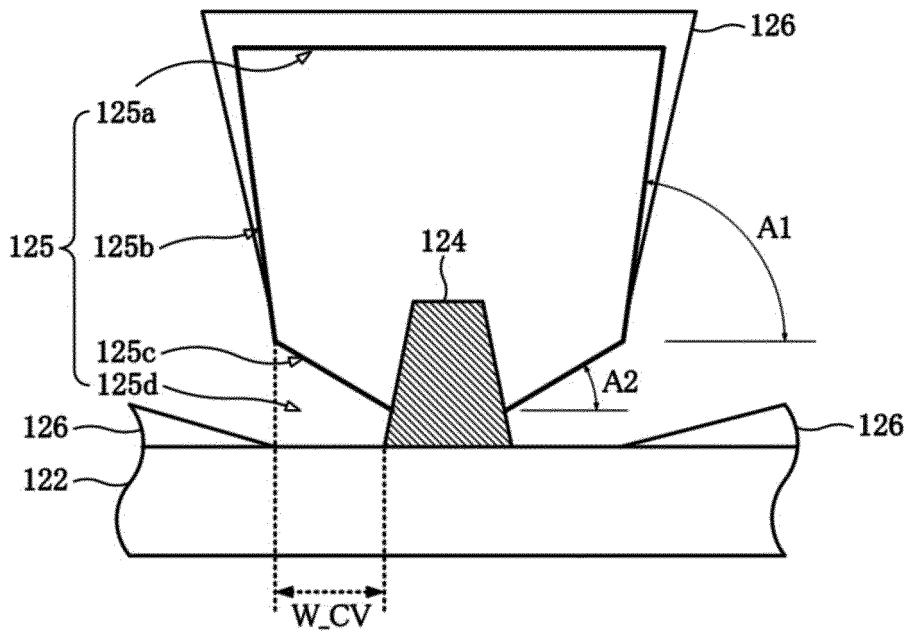


FIG. 3B

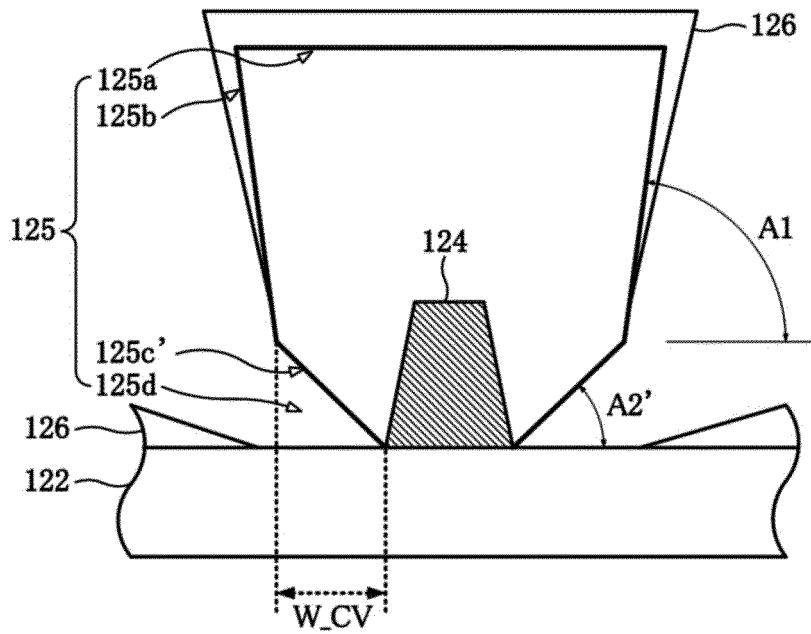


FIG. 4

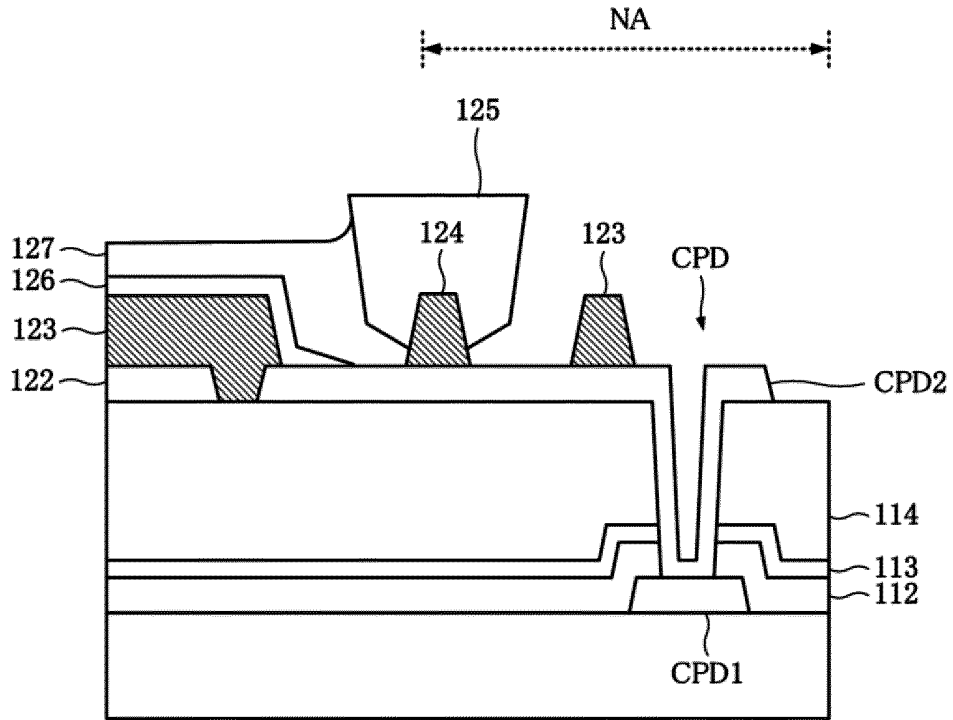


FIG. 5

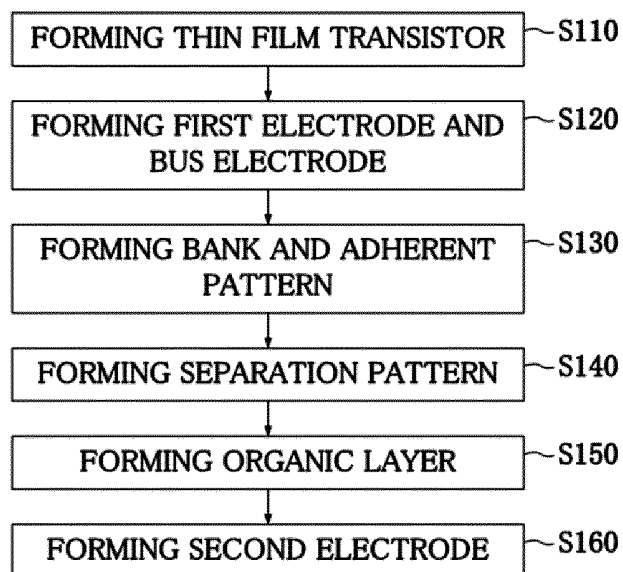


FIG. 6

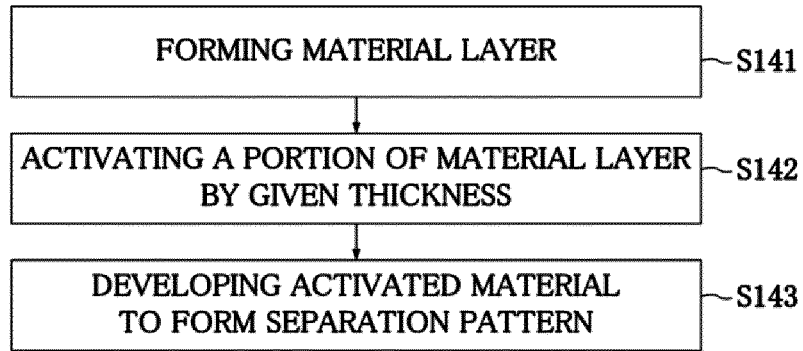


FIG. 7A

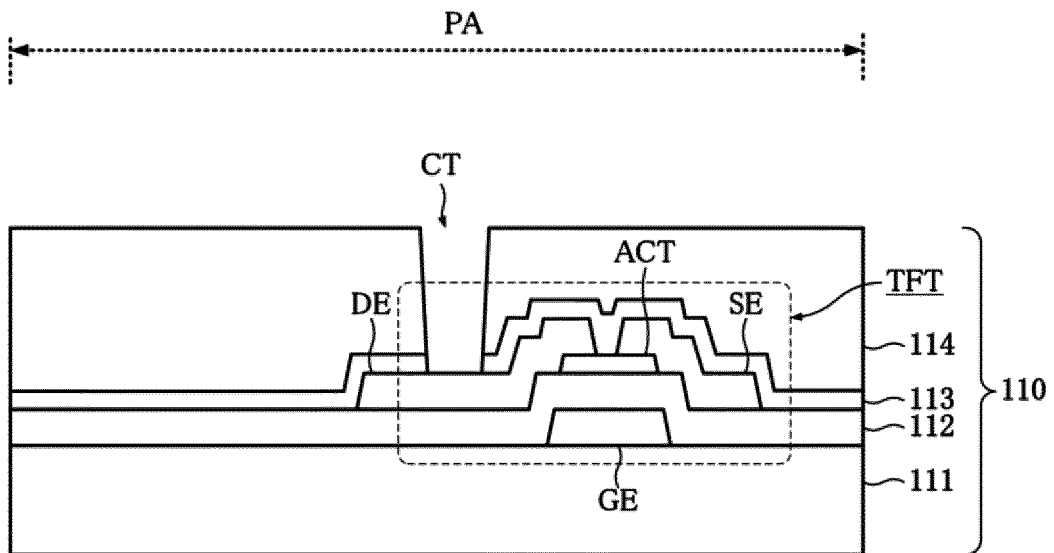


FIG. 7B

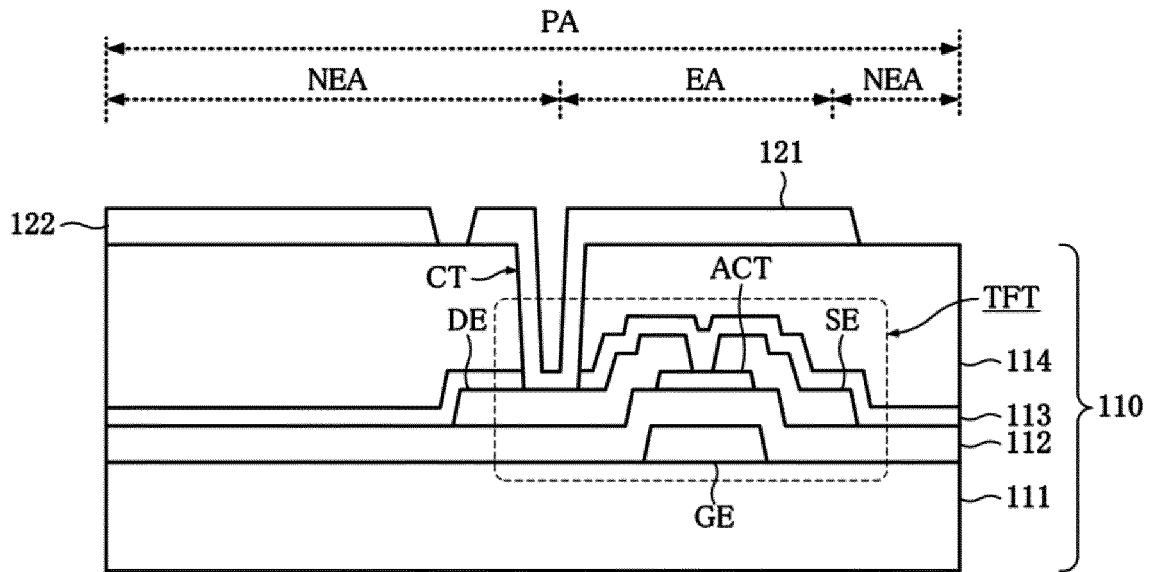


FIG. 7C

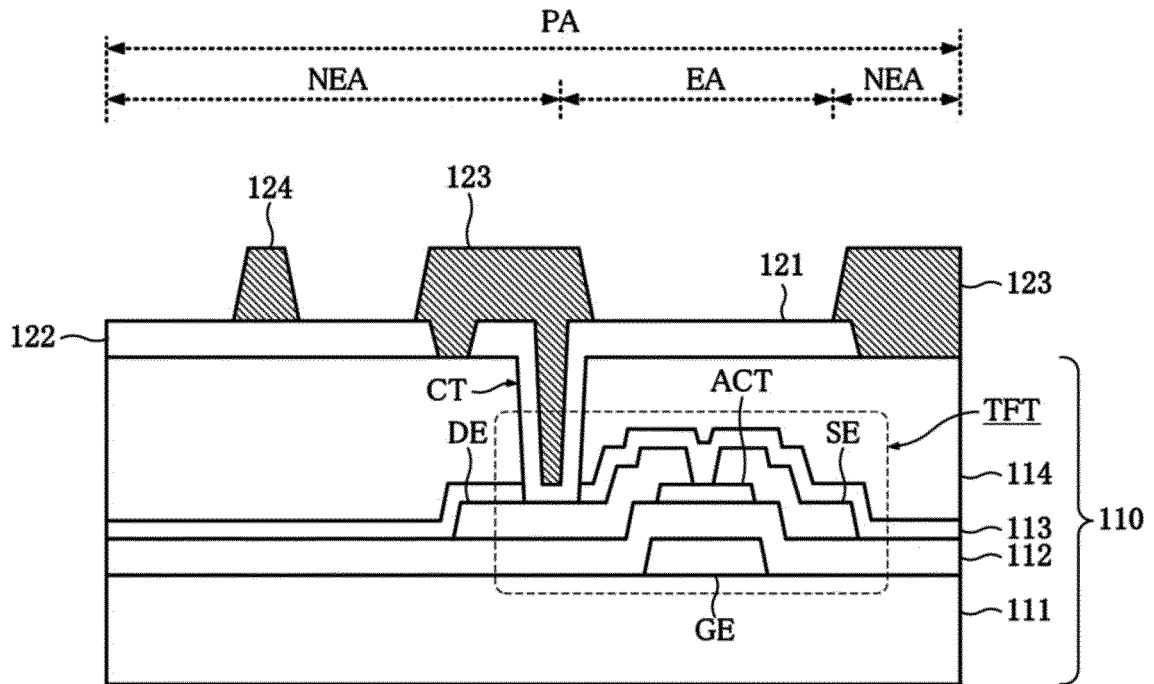


FIG. 7D

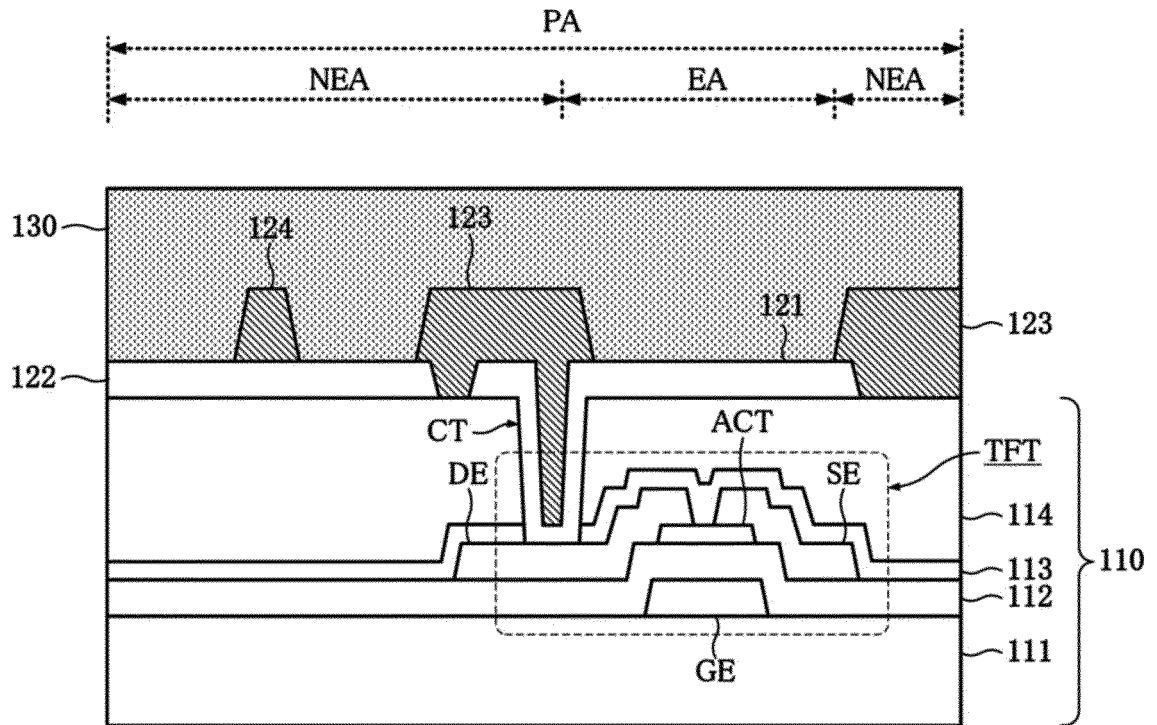


FIG. 7E

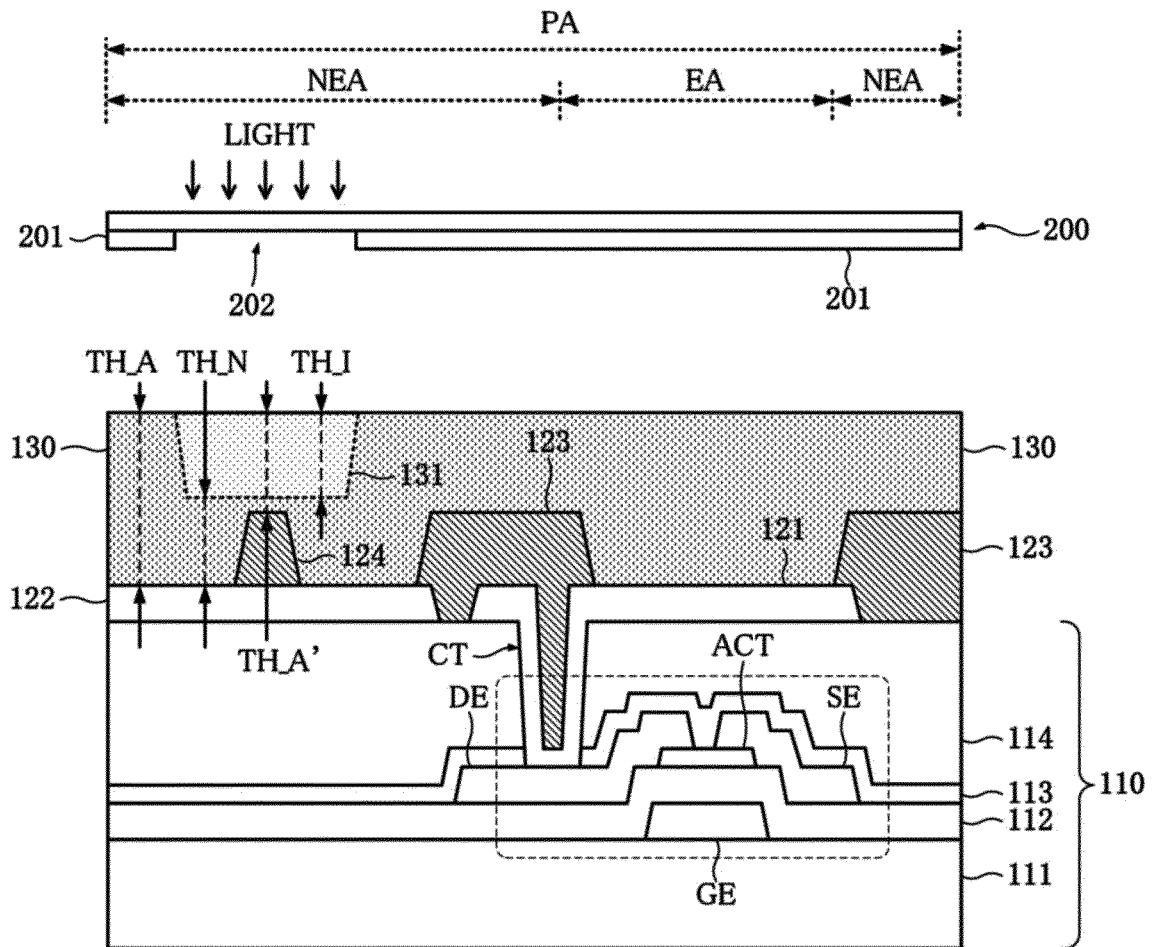


FIG. 7F

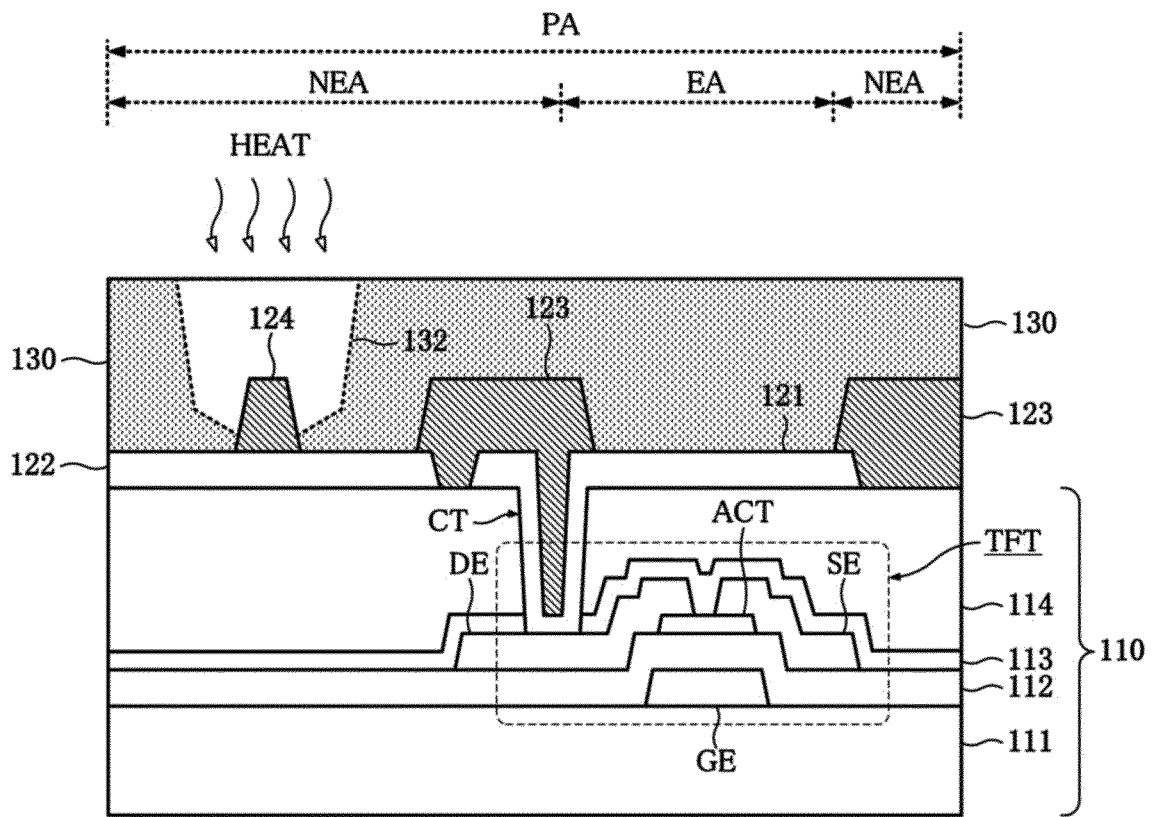


FIG. 7G

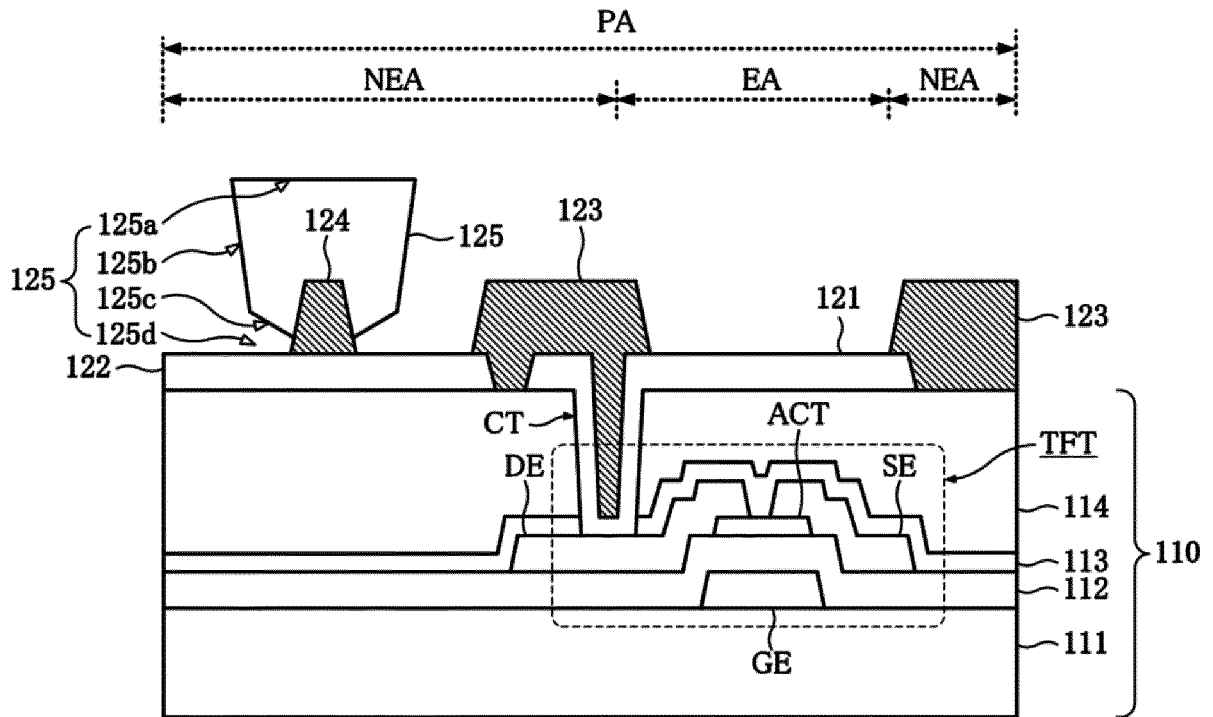


FIG. 7H

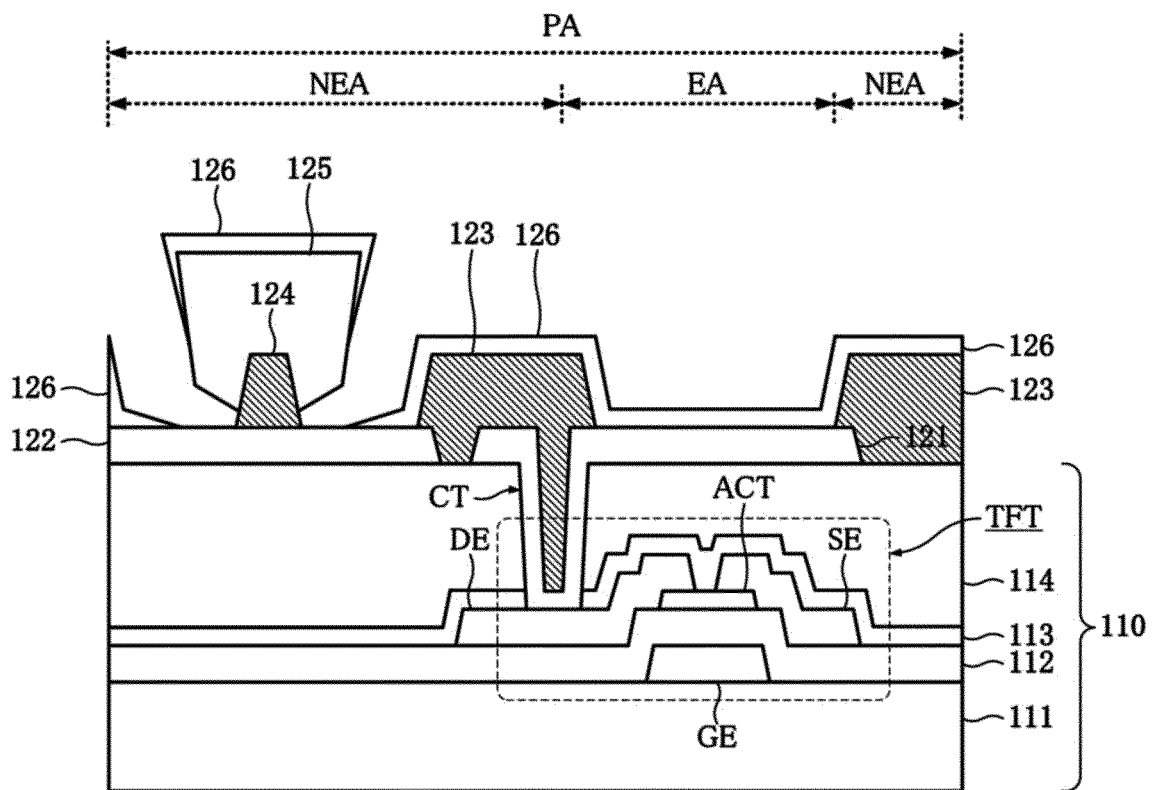
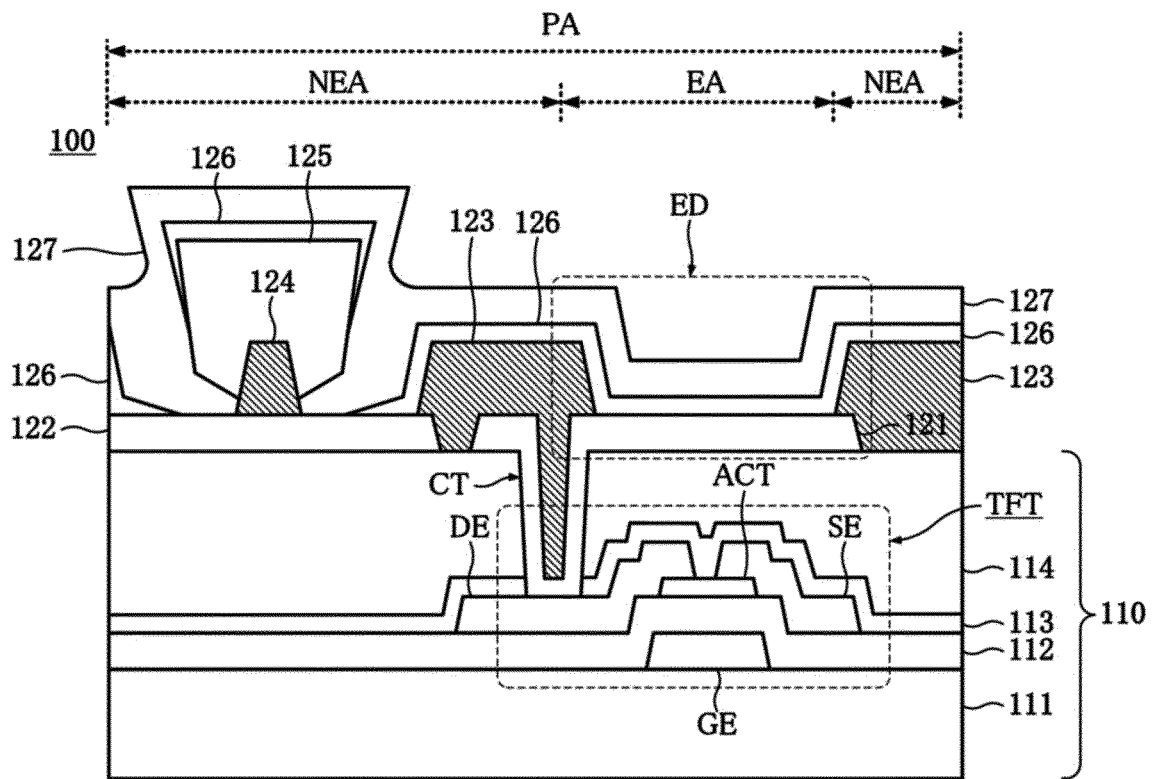


FIG. 7I



REFERENCES CITED IN THE DESCRIPTION

This list of references cited by the applicant is for the reader's convenience only. It does not form part of the European patent document. Even though great care has been taken in compiling the references, errors or omissions cannot be excluded and the EPO disclaims all liability in this regard.

Patent documents cited in the description

- US 2007194307 A [0014]
- WO 02089210 A [0015]
- EP 2503851 A [0016]
- US 6407408 B [0017]

专利名称(译)	有机发光显示装置及其制造方法		
公开(公告)号	EP2827371B1	公开(公告)日	2018-08-22
申请号	EP2014173094	申请日	2014-06-19
[标]申请(专利权)人(译)	乐金显示有限公司		
申请(专利权)人(译)	LG DISPLAY CO. , LTD.		
当前申请(专利权)人(译)	LG DISPLAY CO. , LTD.		
[标]发明人	KIM EUN AH LEE JOON SUK		
发明人	KIM, EUN-AH LEE, JOON-SUK		
IPC分类号	H01L27/32 H01L51/52		
CPC分类号	H01L27/3244 H01L27/3246 H01L27/3276 H01L27/3279 H01L51/5228 H01L51/56 H01L2227/323		
优先权	1020130075544 2013-06-28 KR 1020140070124 2014-06-10 KR		
其他公开文献	EP2827371A1		
外部链接	Espacenet		

摘要(译)

一种有机发光显示装置，包括多个像素区域，每个像素区域包括发光区域和非发光区域；形成在发射区域中的第一电极；形成在非发射区域的汇流电极；形成在汇流电极的一部分上的粘附图案；在所述粘附图案的至少一部分上形成的分离图案，所述分离图案具有倒锥形形状；形成在第一电极上的有机层，分离图案，包括发光层的有机层，以及形成在有机层上和通过分离图案暴露的汇流电极的一部分上的第二电极，以及电气的第二电极接触总线电极。

FIG. 1

