

(19)



(11)

**EP 1 903 552 B1**

(12)

**EUROPEAN PATENT SPECIFICATION**

(45) Date of publication and mention of the grant of the patent:  
**19.09.2018 Bulletin 2018/38**

(51) Int Cl.:  
**G09G 3/3266<sup>(2016.01)</sup> G11C 19/18<sup>(2006.01)</sup>**

(21) Application number: **07253750.9**

(22) Date of filing: **21.09.2007**

(54) **Scan driver and scan signal driving method and organic light emitting display using the same**  
Zeilentreiber und Zeilensignal-Antriebsverfahren sowie organische lichtemittierende Anzeige damit  
Lecteur de capture, procédé de commande du signal de capture et affichage à diodes électroluminescentes organiques l'utilisant

(84) Designated Contracting States:  
**DE FR GB HU**

(30) Priority: **22.09.2006 KR 20060092493**

(43) Date of publication of application:  
**26.03.2008 Bulletin 2008/13**

(73) Proprietor: **Samsung Display Co., Ltd.**  
**Gyeonggi-do (KR)**

(72) Inventor: **Chung, Bo Yong**  
**Gyeonggi-do (KR)**

(74) Representative: **Mounteney, Simon James**  
**Marks & Clerk LLP**  
**90 Long Acre**  
**London**  
**WC2E 9RA (GB)**

(56) References cited:  
**EP-A- 1 763 003 EP-A- 1 843 317**  
**JP-A- 58 182 196 US-A- 4 084 106**  
**US-A1- 2003 128 180 US-A1- 2005 184 763**  
**US-A1- 2006 156 118**

**EP 1 903 552 B1**

Note: Within nine months of the publication of the mention of the grant of the European patent in the European Patent Bulletin, any person may give notice to the European Patent Office of opposition to that patent, in accordance with the Implementing Regulations. Notice of opposition shall not be deemed to have been filed until the opposition fee has been paid. (Art. 99(1) European Patent Convention).

## Description

### BACKGROUND OF THE INVENTION

#### 1. Field of the Invention

[0001] The present invention relates to a scan driver, a scan signal driving method, and an organic light emitting display using the same. More particularly, the present invention relates to a scan driver that may be implemented using PMOS or NMOS transistors, and a scan signal driving method and an organic light emitting display using the same.

#### 2. Description of the Related Art

[0002] Flat panel displays may include a display area that has a plurality of pixels arranged on a substrate in a matrix, and may display an image by selectively applying data signals to the pixels which are connected to corresponding scan lines and data lines.

[0003] A flat panel display may be classified as a passive-matrix display or an active-matrix display according to how the pixels are driven. In terms of resolution, contrast, and operating speed, the active-matrix display, in which each pixel is selectively switched either on or off, has become mainstream.

[0004] A flat panel display may be used as display apparatus for portable information terminals such as a personal computer, a mobile station, a PDA, etc., and monitors for various kinds of information equipment. As flat panel displays, an LCD using a liquid crystal panel, an organic flat display using an OLED (Organic Light Emitting Diode), a PDP using a plasma panel, etc., are well known.

[0005] Recently, various flat panel displays capable of reducing weight and volume, which are disadvantages of cathode ray tubes (CRTs), have been developed. Since an organic light emitting display may exhibit excellent light emitting efficiency, brightness, and viewing angle, has a short response time, and can be made lightweight and thin, it has come into the spotlight.

[0006] In order to reduce manufacturing costs, it may be desirable to form an organic light emitting display having both a pixel portion and a scan driver formed on a substrate. However, the pixel of the organic light emitting display is formed of only PMOS transistors or NMOS transistors, whereas typical scan drivers are CMOS arrangements, including both PMOS transistors and NMOS transistors. Accordingly, the typical scan driver is formed as an external driver and requires additional processes, thereby causing the size and weight of the organic light emitting display to be increased, increasing process complexity, and increasing costs.

### SUMMARY OF THE INVENTION

[0007] The present invention is therefore directed to a

scan driver, a scan signal driving method and an organic light emitting display using the same, which relates to a circuit for driving a CCD image pick up element. US2005/0184763, JPS58182196 and US4084106 relate to a shift register for providing a shifted, non-inverted signal. US2003/0128180 relates to a shift register formed as a cascaded series of stages.

[0008] US 2006/0156118 relates to a scan driver and an organic light emitting display (OLED) for selectively performing progressive scanning and interlaced scanning.

[0009] European patent applications EP1843317A1 and EP1763003A2 (Article 54(3) EPC), show further scan driving circuits employable in an organic light emitting display.

### SUMMARY OF THE INVENTION

[0010] The present invention is therefore directed to a scan driver, a scan signal driving method and an organic light emitting display using the same, which substantially overcome one or more of the problems due to the limitations and disadvantages of the related art.

[0011] It is therefore a feature of an embodiment of the present invention to provide a scan driver configured using one of PMOS and NMOS transistors, a method of driving the same, and an organic light emitting display using the same.

[0012] It is therefore another feature of an embodiment of the present invention to provide a scan driver configured using a same transistor as used in a pixel driving circuit, a method of driving the same, and an organic light emitting display using the scan driver and the pixel driving circuit.

[0013] According to a first aspect of the invention there is provided a scan driver as set out in Claim 1. Preferred features of the first aspect are set out in Claims 2 to 7. According to a second aspect of the invention there is provided a method as set out in Claim 8. Preferred features of the second aspect are set out in Claim 9.

### BRIEF DESCRIPTION OF THE DRAWINGS

[0014] The above and other features and advantages of the present invention will become more apparent to those of ordinary skill in the art as a result of the following description of exemplary embodiments thereof with reference to the attached drawings, in which:

FIG. 1 is a block diagram of an organic light emitting display according to an embodiment of the present invention;

FIG. 2 is a circuit diagram of a pixel of the organic light emitting display shown in FIG. 1;

FIG. 3 is a schematic diagram of a scan driver of the organic light emitting display shown in FIG. 1;

FIG. 4 is a circuit diagram of two stages of the scan driver shown in FIG. 3;

FIG. 5 is a timing chart of the stages shown in FIG. 4; FIG. 6 is a circuit diagram of two stages of a scan driver according to another embodiment of the present invention; and FIG. 7 is a timing chart of the stages shown in FIG. 6.

## DETAILED DESCRIPTION OF THE INVENTION

**[0015]** The present invention will now be described more fully hereinafter with reference to the accompanying drawings, in which exemplary embodiments of the invention are illustrated. These embodiments are provided so that this disclosure will be thorough and complete, and will fully convey the scope of the invention to those skilled in the art.

**[0016]** Where an element is shown as being connected to another element, the element may be directly connected to the other element, or may be indirectly connected to the other element via one or more additional elements. In the drawings, elements may be omitted for simplicity and clarity. Like reference numerals refer to like elements throughout.

**[0017]** FIG. 1 illustrates a block diagram of an organic light emitting display according to an embodiment of the present invention. Referring to FIG. 1, the organic light emitting display includes a pixel portion 100, a data driver 200, and a scan driver 300.

**[0018]** The pixel portion 100 includes a plurality of data lines D, e.g., data lines D1, D2, ..., Dm-1, Dm. The pixel portion 100 also includes a plurality of scan lines S, e.g., scan lines S1, S2, ..., Sn-1, Sn. The pixel portion 100 further includes a plurality of pixels 101, which is formed in a region defined by the plurality of data lines D1, D2, ..., Dm-1, Dm, and the plurality of scan lines S1, S2, ..., Sn-1, Sn.

**[0019]** FIG. 2 is a circuit diagram of a pixel 101 of the organic light emitting display shown in FIG. 1. In this embodiment each of the pixels 101 includes a pixel circuit and an organic light emitting diode. The pixel 101 generates a pixel current flowing through the pixel and provides it to the organic light emitting diode according to a data signal transferred through the plurality of data lines D1, D2, ..., Dm-1, Dm and the scan signal transferred through the plurality of scan lines S1, S2, ..., Sn-1, Sn. As shown in FIG. 2, each pixel 101 includes a plurality of thin film transistors. In some embodiments, the thin film transistors may all be PMOS transistors, or they may all be NMOS transistors.

**[0020]** The data driver 200 is connected to the plurality of data lines D1, D2, ..., Dm-1, Dm. The data driver 200 generates data signals and provides the data signals to the plurality of data lines D1, D2, ..., Dm-1, Dm.

**[0021]** The scan driver 300 is connected to the plurality of scan lines S1, S2, ..., Sn-1, Sn. The scan driver 300 generates scan signals and provides the scan signals to the plurality of scan lines S1, S2, ..., Sn-1, Sn. A specific row can be selected by the scan signal, and a data signal is provided to a pixel 101 positioned at the selected spe-

cific row, so that an electric current is generated in the pixel 101 corresponding to the data signal.

**[0022]** In a scan driver according to an embodiment of the present invention, where the thin film transistors of the pixel portion 100 are PMOS transistors, the scan driver 300 is formed of PMOS transistors, and where thin film transistors of the pixel portion 100 are NMOS transistors, the scan driver 300 may be formed of NMOS transistors. Thus, the scan driver 300 according to some embodiments of the present invention can be formed by the same process used to form the pixel portion 100, and the pixel portion 100 and the scan driver 300 can be formed on a same substrate.

**[0023]** Referring to FIG. 2, the pixel 101 is connected to a data line Dm, a scan line Sn, and a pixel power supply line ELVDD. The pixel 101 includes a first transistor T1, a second transistor T2, a capacitor Cst, and an OLED (organic light emitting diode).

**[0024]** Where the pixel portion 101 is formed using PMOS transistors, a source of the first transistor T1 is connected to the pixel power supply line ELVDD, a drain thereof is connected to the OLED, and a gate thereof is connected to a first node N1. A source of the second transistor T2 is connected to the data line Dm, a drain thereof is connected to the first node N1, and a gate thereof is connected to the scan line Sn. The capacitor Cst is connected between the first node N1 and the pixel power supply line ELVDD, and can maintain a voltage between the first node N1 and the pixel power supply line ELVDD. The OLED includes an anode electrode, a cathode electrode, and an emission layer. The anode electrode of the OLED is connected to the drain of the first transistor T1, a cathode electrode thereof is connected to a power supply ELVSS, which may be a lower voltage power supply. When an electric current flows from the anode electrode of the OLED to the cathode electrode thereof, the emission layer emits light, with a luminance of the light corresponding to the amount of the electric current.

**[0025]** FIG. 3 is a schematic diagram of a scan driver of the organic light emitting display shown in FIG. 1. Referring to FIG. 3, the scan driver 300 includes a plurality of stages 301, 302, ..., 30n-1, 30n, which are connected to each other in series. Among the stages, the first stage 301 receives a clock signal CLK, a clock bar signal CLKB, and a start pulse SP. Stages following the first stage 301, i.e., the stages 302, ..., 30n-1, 30n, receive the clock signal CLK, the clock bar signal CLKB, and the output signal of a previous stage as scan signals S1, S2, ..., Sn-2, Sn-1,.

**[0026]** FIG. 4 is a circuit diagram of two stages 301 and 302 of the scan driver 300 shown in FIG. 3. Referring to FIG. 4, the first stage 301 includes a first circuit, a second circuit, and a third circuit. The second stage 302 includes a fourth circuit, a fifth circuit, and a sixth circuit.

**[0027]** In some embodiments, the first through sixth circuits are implemented using PMOS transistors. The first circuit includes a first transistor M1, a second transistor M2, a third transistor M3, and a first capacitor C1. A

source of the first transistor M1 is connected to a first power supply Vpos, a gate thereof is connected to a clock terminal CLK, and a drain thereof is connected to a first node N1. A source of the second transistor M2 is connected to the first node N1, a gate thereof is connected to a second node N2, and a drain thereof is connected to a clock bar terminal CLKB. A source of the third transistor M3 is connected to the second node N2, a gate thereof is connected to the clock terminal CLK, and a drain thereof is connected to a start pulse input terminal SP. The first capacitor C1 is connected between the first node N1 and the second node N2.

**[0028]** The second circuit includes a fourth transistor M4, a fifth transistor M5, a sixth transistor M6, a seventh transistor M7, and a second capacitor C2. A source of the fourth transistor M4 is connected to a first power supply Vpos, a gate thereof is connected to the first node N1, and a drain thereof is connected to a third node N3. A source of the fifth transistor M5 is connected to a third node N3, a gate thereof is connected to the first node N1, and a drain thereof is connected to a fourth node N4. A source of the sixth transistor M6 is connected to the third node N3, a gate thereof is connected to the fourth node N4, and a drain thereof is connected to a second power supply Vneg, which has a voltage less than that of the first power supply Vpos. A source of the seventh transistor M7 is connected to the fourth node N4, a gate thereof is connected to a clock terminal CLK, and a drain thereof is connected to the first power supply Vneg. The second capacitor C2 is connected between the third node N3 and the fourth node N4.

**[0029]** The third circuit includes an eighth transistor M8, a ninth transistor M9, a tenth A transistor M10a, a tenth B M10b, and a third capacitor C3. A source of the eighth transistor M8 is connected to the first power supply Vpos, a gate thereof is connected to the third node N3, and a drain thereof is connected to a fifth node N5. A source of the ninth transistor M9 is connected to the fifth node N5, a gate thereof is connected to the third node N3, and a drain thereof is connected to a sixth node N6. A source of the tenth A transistor M10a is connected to the fifth node N5, a gate thereof is connected to the sixth node N6, and a drain thereof is connected to the second power supply Vneg. A source of the tenth B transistor M10b is connected to the sixth node N6, a gate thereof is connected to the first node N1, and a drain thereof is connected to the second power supply Vneg. The third capacitor C3 is connected between the fifth node N5 and the sixth node N6. Further, the fifth node N5 is used as an output terminal.

**[0030]** The fourth circuit includes an eleventh transistor M11, a twelfth transistor M12, a thirteenth transistor M13, and a fourth capacitor C4. A source of the eleventh transistor M11 is connected to the first power supply Vpos, a gate thereof is connected to a clock bar terminal CLKB, and a drain thereof is connected to a seventh node N7. A source of the twelfth transistor M12 is connected to the seventh node N7, a gate thereof is connected to an eighth

node N8, and a drain thereof is connected to a clock terminal CLK. A source of the thirteenth transistor M13 is connected to the eighth node N8, a gate thereof is connected to the clock bar terminal CLKB, and a drain thereof is connected to the output terminal of the first stage 301. The fourth capacitor C4 is connected between the seventh node N7 and the eighth node N8.

**[0031]** The fifth circuit includes a fourteenth transistor M14, a fifteenth transistor M15, a sixteenth transistor M16, a seventeenth transistor M17, and a fifth capacitor C5. A source of the fourteenth transistor M14 is connected to the first power supply Vpos, a gate thereof is connected to the seventh node N7, and a drain thereof is connected to a ninth node N9. A source of the fifteenth transistor M15 is connected to the ninth node N9, a gate thereof is connected to the seventh node N7, a drain thereof is connected to a tenth node N10. A source of the sixteenth transistor M16 is connected to the ninth node N9, a gate thereof is connected to the tenth node N10, and a drain thereof is connected to the second power supply Vneg having a voltage less than that of the first power supply Vpos. A source of the seventeenth transistor M17 is connected to the tenth node N10, a gate thereof is connected to the clock bar terminal CLKB, and a drain thereof is connected to the first power supply Vneg. The fifth capacitor C5 is connected between the ninth node N9 and the tenth node N10.

**[0032]** The sixth circuit includes an eighteenth transistor M18, a nineteenth transistor M19, a twentieth transistor M20, a twenty-first transistor M21, and a sixth capacitor C6. A source of the eighteenth transistor M18 is connected to the first power supply Vpos, a gate thereof is connected to the ninth node N9, and a drain thereof is connected to an eleventh node N11. A source of the nineteenth transistor M19 is connected to the eleventh node N11, a gate thereof is connected to the ninth node N9, a drain thereof is connected to a twelfth node N12. A source of the twentieth transistor M20 is connected to the eleventh node N11, a gate thereof is connected to the twelfth node N12, and a drain thereof is connected to the second power supply Vneg. A source of the twenty-first transistor M21 is connected to the twelfth node N12, a gate thereof is connected to the seventh node N7, and a drain thereof is connected to the second power supply Vneg. The sixth capacitor C6 is connected between the eleventh node N11 and the twelfth node N12. Further, the eleventh node N11 is used as an output terminal. The first through twenty-first transistors M1-M21 may be PMOS transistors.

**[0033]** FIG. 5 is a timing chart of the stages shown in FIG. 4. The following is a description of an exemplary operation of the stages 301 and 302 shown in FIG. 4. Referring to FIG. 4, in the first stage 301, the first circuit receives the clock signal CLK, the clock bar signal CLKB, and a start pulse SP, and operates according to the received signals. The second circuit receives the clock signal CLK and the output signal of the first circuit, i.e., a voltage of the first node N1, and operates according to the received signals. The third circuit operates according

to the output signal of the first circuit, i.e., the voltage of the first node N1, and an output signal of the second circuit, i.e., the voltage of the third node N3.

**[0034]** In the second stage 302, the fourth circuit receives the clock signal CLK, the clock bar signal CLKB, and a first scan signal S1, i.e., an output signal of the third circuit at the node N5, and operates according to the received signals. The fifth circuit receives the clock bar signal CLKB and an output signal of the fourth circuit, i.e., a voltage of the seventh node N7, and operates according to the received signals. The sixth circuit receives an output signal of the fourth circuit, namely, the voltage of the seventh node N7, and an output signal of the fifth circuit, i.e., a voltage of the ninth node N9.

**[0035]** An exemplary operation of the first and second stages 301 and 302 will now be described with reference to FIG. 4 and FIG. 5, which illustrates a timing chart of the stages shown in FIG. 4. Referring to FIG. 5, the operation will be described starting at a point A, at which point the clock signal CLK has a low level, the clock bar signal CLKB has a high level, and the start pulse signal SP has a high level.

**[0036]** In operation of the first circuit 301, at point A, when the clock signal CLK has a low level, the start pulse SP has a high level, and the clock bar signal CLKB has a high level, then the first transistor M1 and the third transistor M3 is turned-on, a voltage of the first power supply Vpos is provided to the first node N1, and the start pulse SP is transferred to the second node N2. Thus, both the first node N1 and the second node N2 are at a high level. The voltage of the first node N1 and the voltage of the second node N2 are maintained by the first capacitor C1, and the voltage of the second node N2 is at a high level to maintain the second transistor M2 in a turned-off state. The voltage of the first node N1 is a voltage of the first power supply Vpos.

**[0037]** In the next half-cycle of the clock signals, when the clock signal CLK has a high level, the start pulse SP has a high level, and the clock bar signal CLKB has a low level, then the first transistor M1 and the third transistor M3 are turned-off, thereby causing both terminals of the first capacitor C1 to be in a floating state. Accordingly, the first node N1 maintains a voltage of the first power supply Vpos by the first capacitor C1. A gate voltage of the second transistor M2 is at a high level due to the first capacitor C1, and thus the second transistor M2 is in a turned-off state.

**[0038]** In the next half-cycle of the clock signals, when the clock signal CLK is at a low level, the start pulse SP is at a low level, and the clock bar signal CLKB is at a high level, then the first transistor M1 and the third transistor M3 are again be turned-on. Accordingly, a voltage of the first power supply Vpos is again provided to the first node N1 and the start pulse is again transferred to the second node N2. Since the start pulse SP is at a low level, the second node N2 is driven to a low level by the start pulse SP, placing the second transistor M2 in a turned-on state. The drain of the second transistor M2 is

at a high level due to the clock bar signal CLKB, and so, with the clock bar signal CLKB (high) and Vpos across the second transistor M2, no electric current flows across the second transistor M2. Accordingly, a voltage of the first node N1 maintains the voltage of the first power supply Vpos. As shown in Figure 5, in some embodiments of the invention, the width of the start pulse SP at a low level may be greater than the width of the clock signal CLK being at a low level. In other words, as shown in Figure 5, while the period at which the start pulse SP and the clock signal CLK are both at the low level is a half-cycle, the width of the low period of the start pulse SP may be greater than a half-cycle.

**[0039]** In the next half-cycle of the clock signals, when the clock signal CLK is at a high level, the start pulse SP is at a high level, and the clock bar signal CLKB is at a low level, the first transistor M1 and the third transistor M3 is again turned-off, thereby causing both terminals of the first capacitor C1 to again be in a floating state. At this time, the second node N2 maintains a low level. Accordingly, a gate voltage of the second transistor M2 is at a low level, keeping the second transistor M2 in a turned-on state, and a current path exists from the source of the second transistor M2 to the drain thereof, thereby reducing the voltage of the first node N1. At this time, a voltage of the first node N1 maintains a low level from the first capacitor C1, and the voltage of the first node N1 is reduced by a voltage of the second power supply Vneg, which causes a signal characteristic of the scan signal to be improved.

**[0040]** When the first node N1 has a high level voltage and the third node N3 has a low level voltage, the third circuit causes a voltage of the fifth node N5, i.e., a voltage of the output terminal, to be at a high level. When the first node N1 has a low level voltage and the third node N3 has a high level voltage, the third circuit causes a voltage of the fifth node N5, i.e., the voltage of the an output terminal, to be at a low level.

**[0041]** The second stage 302 has substantially the same functions as those of the first stage 301. The second stage 302 receives a voltage of the output terminal of the first stage 301, i.e., the first scan signal S1, and operates according to the scan signal S1 instead of the start pulse SP.

**[0042]** In operation of the second circuit when the clock signal CLK has a low level and the first node N1 has a high level, then the seventh transistor M7 is turned-on and the fourth transistor M4 and the fifth transistor M5 are turned-off. At this time, a voltage of the fourth node N4 is that of the second power supply Vneg as a result of the operation of the seventh transistor M7 so that the sixth M6 is turned-on. Accordingly, a voltage of the third node N3 is at a low level since the current flows from the third node N3 to the second power supply Vneg. At this time, a gate of the sixth transistor M6 maintains a low level by the second capacitor C2. The voltage of the third node N3 is at a voltage of the second power supply Vneg since the current flows from the third node N3 to the sec-

ond power supply Vneg.

**[0043]** Further, when the clock signal CKL has a high level and a voltage of the first node N1 has a low level, then the fourth transistor M4 and the fifth transistor M5 are turned-on by the voltage of the first node N1 although the seventh transistor M7 is turned-off by the clock signal CKL. Accordingly, a voltage of the first power supply Vpos is transferred to the third node N3 and the voltages of the third node N3 and the fourth node N4 are the same. Therefore, the sixth transistor M6 is turned-off so that the third node N3 maintains the voltage of the first node N1 and a high level signal is outputted.

**[0044]** In operation of the third circuit when the voltage of the first node N1 has a high level the voltage of the third node N3 has a low level. The eighth transistor M8 and the ninth transistor M9 are turned-on and the tenth B transistor M10b has a high level so that the voltages of the fifth node N5 and the sixth node N6 are the same and the tenth A transistor M10a is turned-off. Accordingly, the voltage of the fifth node N5 has a high level since it maintains the voltage of the first node N1. When the voltage of the first node N1 has a low level the voltage of the third node N3 has a high level. And, the tenth B transistor M10b is turned-on and the eighth transistor M8 and the ninth transistor M9 is turned-off so that the current flows from the fifth node N5 to the second power supply Vneg. At this time, the voltage of the fifth node N5 is the voltage of the second power supply Vneg since the gate voltage of the tenth A transistor M10a is maintained.

**[0045]** FIG. 6 illustrates a circuit diagram of two stages of a scan driver according to another embodiment of the present invention, and FIG. 7 illustrates a timing chart of the stages shown in FIG. 6. A stage 301' according to this embodiment of the present invention includes a first circuit, a second circuit and a third circuit, and a subsequent stage 302' includes a fourth circuit, a fifth circuit, and a sixth circuit. In this embodiment, the circuits are formed using NMOS transistors. The first stage 301' receives a start pulse SP' that is at a low level and then transitions to a high level, and the first stage 301' outputs a first scan signal S1' that has a high-level pulse. The second stage 302' receives the first scan signal S1' and outputs a second scan signal S2'.

**[0046]** In the scan driver, a scan signal driving method, and an organic light emitting display using the same according to the present invention, the scan driver can be formed using all PMOS transistors or all NMOS transistors. Accordingly, when a pixel formed on a substrate is manufactured using only PMOS transistors or only NMOS transistors, the scan driver can similarly be formed using the PMOS transistors or the NMOS transistors, respectively. Thus, the scan driver can be formed using a same process as the pixel portion. This allows the process to be simplified, the size and weight of the organic light emitting display to be reduced, and manufacturing costs to be reduced. In addition, as the scan signal can have a voltage of a second power supply, a signal characteristic thereof may be enhanced.

**[0047]** Exemplary embodiments of the present invention have been disclosed herein, and although specific terms are employed, they are used and are to be interpreted in a generic and descriptive sense only and not for purpose of limitation. Accordingly, it will be understood by those of ordinary skill in the art that various changes in form and details may be made without departing from the scope of the present invention as set forth in the following claims.

## Claims

1. A scan driver (300), comprising:

a plurality of stages connected to each other in series, each of the stages configured to receive a clock signal (CLK), a clock bar signal (CLKB), and an input signal (SP), wherein the input signal (SP) comprises a first voltage and a pulse of a second voltage, wherein each stage includes a first circuit that is configured to store the first voltage and the second voltage in response to the input signal (SP) and one of the clock signal (CLK) or the clock bar signal (CLKB) and provide a first circuit output signal that corresponds to the second voltage in response to the second voltage of the input signal (SP) and the other of the clock signal (CLK) or the clock bar signal (CLKB);

a second circuit configured to receive the first circuit output signal from the first circuit and the one of the clock signal (CLK) or the clock bar signal (CLKB), and configured to provide a second output signal; and

a third circuit configured to receive the first circuit output signal from the first circuit and the second output circuit signal from the second circuit, and configured to provide a scan signal (S1) as an output of the stage, wherein the scan signal (S1) comprises a pulse having the same polarity as the pulse of the input signal (SP);

wherein the first circuit in a first stage (301) includes:

a first transistor (M1) configured to transfer a voltage from a drive power supply ( $V_{pos}$ ) to a first node (N1) in response to the one of the clock signal (CLK) or the clock bar signal (CLKB);

a second transistor (M2) configured to control a voltage of the first node (N1) in response to a voltage of a second node (N2);

a third transistor (M3) configured to transfer a voltage of the input signal (SP) to the second node (N2) in response to the one of the clock signal (CLK) or the clock bar signal (CLKB); and

- a first capacitor (C1) connected between the first node (N1) and the second node (N2) and configured to store a voltage corresponding to the difference between the drive power supply ( $V_{pos}$ ) and the input signal (SP),  
 wherein the first circuit output signal corresponds to the voltage of the first node (N1),
- wherein the second circuit includes:
- a fourth transistor (M4) configured to transfer the drive power supply ( $V_{pos}$ ) to a third node (N3) in response to the first circuit output signal;  
 a fifth transistor (M5) configured to connect the third node (N3) to the fourth node (N4) in response to the first circuit output signal;  
 a sixth transistor (M6) configured to control a voltage of the third node (N3) in response to a voltage of the fourth node (N4);  
 a seventh transistor (M7) configured to control a voltage of the fourth node (N4) in response to the one of the clock signal (CLK) or the clock bar signal (CLKB); and  
 a second capacitor (C2) connected between the third node (N3) and the fourth node (N4),  
 wherein the second circuit output signal corresponds to the voltage of the third node (N3).
2. A scan driver (300) according to claim 1, wherein the input signal (SP) is a start pulse when the stage is a first stage, and the input signal is an output signal (S1) of a previous stage when the stage is not the first stage.
  3. A scan driver (300) according to claim 1 or 2, wherein the first circuit in a second stage (302) directly succeeding the first stage (301) includes:
 

an eleventh transistor (M11) configured to transfer a voltage of the drive power supply ( $V_{pos}$ ) to a seventh node (N7) in response to the other of the clock signal (CLK) or the clock bar signal (CLKB);  
 a twelfth transistor (M12) configured to control a voltage of the seventh node (N7) in response to a voltage of an eighth node (N8);  
 a thirteenth transistor (M13) configured to transfer a voltage of a signal output by the first stage (S1) to the eighth node (N8) in response to the other of the clock signal (CLK) or the clock bar signal (CLKB); and  
 a fourth capacitor (C4) connected between the seventh node (N7) and the eighth node (N8) and configured to store a voltage corresponding to
- the difference between the drive power supply ( $V_{pos}$ ) and the voltage of the signal output (S1) by the first stage (301),  
 wherein the first circuit in the second stage (302) is configured to output a signal having a voltage corresponding to the voltage of the seventh node (N7).
4. A scan driver (300) according to any of claims 1 to 3, wherein the input signal (SP) includes a first pulse having a pulse width equal to one-half cycle of the clock signal (CLK), the scan signal (S1) includes a second pulse having a pulse width equal to that of the first pulse, and the second pulse is offset from the first pulse by one half clock cycle.
  5. A scan driver according to any one of claims 1 to 4, wherein the third circuit includes:
 

an eighth transistor (M8) configured to transfer a drive power to a fifth node (N5) in response to the second circuit output signal;  
 a ninth transistor (M9) configured to connect the fifth node (N5) to a sixth node (N6) in response to the second output signal; a tenth A transistor (M10a) configured to control the voltage of the fifth node (N5) in response to a voltage of the sixth node (N6); a tenth B transistor (M10b) configured to control the voltage of the sixth node (N6) in response to the first output signal; and  
 a third capacitor (C3) connected between the fifth node (N5) and the sixth node (N6), wherein the scan signal (S1) corresponds to the voltage of the fifth node (N5).
  6. A scan driver (300) according to any one of claims 1 to 5, wherein the first, second and third circuits are formed using one of PMOS transistors and NMOS transistors.
  7. An organic light emitting display, comprising:
 

a pixel portion (100) having at least one pixel connected to a data line and a scan line;  
 a data driver (200) configured to provide a data signal (D1) to the data line; and  
 a scan driver (300) configured to provide a scan signal (S1) to the scan line,  
 wherein the scan driver (300) is according to any one of claims 1 to 6.
  8. A method of sequentially driving a scan signal in a stage of a scan driver (300) according to claim 1, the method comprising:
 

storing the first voltage and the second voltage in the stage in response to the input signal (SP)

and one of the clock signal (CLK) or the clock bar signal (CLKB),  
 providing a first output signal that corresponds to the second voltage in response to the second voltage of the input signal (SP) and the other of the clock signal (CLK) or the clock bar signal (CLKB)

receiving the first circuit output signal and the one of the clock signal (CLK) or the clock bar signal (CLKB), and providing a second output signal in response thereto; and

receiving the first circuit output signal and the second circuit output signal, and providing a scan signal (S1) in response thereto, wherein the scan signal (S1) comprises a pulse having the same polarity as the pulse of the input signal (SP);

wherein the first circuit in a first stage (301) carries out the steps of:

using a first transistor (M1) to transfer a voltage from a drive power supply ( $V_{pos}$ ) to a first node (N1) in response to the one of the clock signal (CLK) or the clock bar signal (CLKB)

using a second transistor (M2) to control a voltage of the first node (N1) in response to a voltage of a second node (N2);

using a third transistor (M3) to transfer a voltage of the input signal (SP) to the second node (N2) in response to the one of the clock signal (CLK) or the clock bar signal (CLKB); and

using a first capacitor (C1) connected between the first node (N1) and the second node (N2) to store a voltage corresponding to the difference between the drive power supply ( $V_{pos}$ ) and the input signal (SP), wherein the first circuit output signal corresponds to the voltage of the first node (N1), using the fourth transistor (M4) to transfer the drive power supply ( $V_{pos}$ ) to a third node (N3) in response to the first circuit output signal;

using the fifth transistor (M5) to connect the third node (N3) to the fourth node (N4) in response to the first circuit output signal

using the sixth transistor (M6) to control a voltage of the third node (N3) in response to a voltage of the fourth node (N4)

using the seventh transistor (M7) to control a voltage of the fourth node (N4) in response to one of the clock signal (CLK) or the clock bar signal (CLKB), and

wherein the second circuit output signal corresponds to the voltage of the third node (N3).

9. A method according to claim 8, wherein the input signal (SP) is a start pulse when the stage is a first stage, and the input signal is an output signal of a previous stage when the stage is not the first stage.

### Patentansprüche

1. Abtasttreiber (300), umfassend:

eine Mehrzahl von Stufen, die miteinander in Reihe geschaltet sind, wobei jede der Stufen konfiguriert ist, um ein Taktsignal (CLK), ein Taktbalkensignal (CLKB) und ein Eingangssignal (SP) zu empfangen, wobei das Eingangssignal (SP) eine erste Spannung und einen Impuls einer zweiten Spannung umfasst, wobei jede Stufe Folgendes beinhaltet:

eine erste Schaltung, die konfiguriert ist, um die erste Spannung und die zweite Spannung als Reaktion auf das Eingangssignal (SP) und eines von dem Taktsignal (CLK) oder dem Taktbalkensignal (CLKB) zu speichern und ein Ausgangssignal der ersten Schaltung bereitzustellen, das der zweiten Spannung entspricht, als Reaktion auf die zweite Spannung des Eingangssignals (SP) und das andere von dem Taktsignal (CLK) oder dem Taktbalkensignal (CLKB);  
 eine zweite Schaltung, die konfiguriert ist, um das Ausgangssignal der ersten Schaltung und das eine von dem Taktsignal (CLK) oder dem Taktbalkensignal (CLKB) zu empfangen, und konfiguriert ist, um ein zweites Ausgangssignal bereitzustellen; und  
 eine dritte Schaltung, die konfiguriert ist, um das Ausgangssignal der ersten Schaltung und das zweite Ausgangssignal der zweiten Schaltung zu empfangen, und konfiguriert ist, um ein Abtastsignal (S1) als einen Ausgang der Stufe bereitzustellen, wobei das Abtastsignal (S1) einen Impuls mit der gleichen Polarität wie der Impuls des Eingangssignals (SP) aufweist;

wobei die erste Schaltung in einer ersten Stufe (301) umfasst:

einen ersten Transistor (M1), der konfiguriert ist, um als Reaktion auf das eine von dem Taktsignal (CLK) oder dem Taktbalkensignal (CLKB) eine Spannung von einer Antriebsleistungsversorgung ( $V_{pos}$ ) zu einem ersten Knoten (N1) zu übertragen;  
 einen zweiten Transistor (M2), der konfigu-

riert ist, um eine Spannung des ersten Knotens (N1) als Reaktion auf eine Spannung eines zweiten Knotens (N2) zu steuern; einen dritten Transistor (M3), der konfiguriert ist, um eine Spannung des Eingangssignals (SP) als Reaktion auf das eine von dem Taktsignal (CLK) oder dem Taktbalkensignal (CLKB) zu dem zweiten Knoten (N2) zu übertragen; und  
 einen ersten Kondensator (C1), der zwischen den ersten Knoten (N1) und den zweiten Knoten (N2) geschaltet und konfiguriert ist, um eine Spannung entsprechend der Differenz zwischen der Antriebsleistungsversorgung ( $V_{pos}$ ) und dem Eingangssignal (SP) zu speichern; wobei das Ausgangssignal der ersten Schaltung der Spannung des ersten Knotens (N1) entspricht,

wobei die zweite Schaltung umfasst:

einen vierten Transistor (M4), der konfiguriert ist, um die Antriebsleistungsversorgung ( $V_{pos}$ ) als Reaktion auf das Ausgangssignal der ersten Schaltung zu einem dritten Knoten (N3) zu übertragen; einen fünften Transistor (M5), der konfiguriert ist, um als Reaktion auf das Ausgangssignal der ersten Schaltung den dritten Knoten (N3) mit dem vierten Knoten (N4) zu verbinden; einen sechsten Transistor (M6), der konfiguriert ist, um eine Spannung des dritten Knotens (N3) als Reaktion auf eine Spannung des vierten Knotens (N4) zu steuern; einen siebten Transistor (M7), der konfiguriert ist, um eine Spannung des vierten Knotens (N4) als Reaktion auf das eine von dem Taktsignal (CLK) oder dem Taktbalkensignal (CLKB) zu steuern; und einen zweiten Kondensator (C2), der zwischen den dritten Knoten (N3) und den vierten Knoten (N4) geschaltet ist; wobei das Ausgangssignal der zweiten Schaltung der Spannung des dritten Knotens (N3) entspricht.

2. Abtasttreiber (300) nach Anspruch 1, wobei das Eingangssignal (SP) ein Startimpuls ist, wenn die Stufe eine erste Stufe ist, und das Eingangssignal ein Ausgangssignal (S1) von einer vorhergehenden Stufe ist, wenn die Stufe nicht die erste Stufe ist.
3. Abtasttreiber (300) nach Anspruch 1 oder 2, wobei die erste Schaltung in einer zweiten Stufe (302), die unmittelbar auf die erste Stufe (301) folgt, beinhaltet:

einen elften Transistor (M11), der konfiguriert ist, um eine Spannung der Antriebsleistungsversorgung ( $V_{pos}$ ) als Reaktion auf das andere von dem Taktsignal (CLK) oder dem Taktbalkensignal (CLKB) zu einem siebten Knoten (N7) zu übertragen; einen zwölften Transistor (M12), der konfiguriert ist, um eine Spannung des siebten Knotens (N7) als Reaktion auf eine Spannung eines achten Knotens (N8) zu steuern; einen dreizehnten Transistor (M13), der konfiguriert ist, um eine Spannung eines von der ersten Stufe (S1) ausgehenden Signals als Reaktion auf das andere von dem Taktsignal (CLK) oder dem Taktbalkensignal (CLKB) zu dem achten Knoten (N8) zu übertragen; und einen vierten Kondensator (C4), der zwischen den siebten Knoten (N7) und den achten Knoten (N8) geschaltet ist und konfiguriert ist, um eine Spannung entsprechend der Differenz zwischen der Antriebsleistungsversorgung ( $V_{pos}$ ) und der Spannung des Signalausgangs (S1) durch die erste Stufe (301) zu speichern; wobei die erste Schaltung in der zweiten Stufe (302) konfiguriert ist, um ein Signal auszugeben, das eine Spannung aufweist, die der Spannung des siebten Knotens (N7) entspricht.

4. Abtasttreiber (300) nach einem der Ansprüche 1 bis 3, wobei das Eingangssignal (SP) einen ersten Impuls mit einer Impulsbreite gleich einem halben Zyklus des Taktsignals (CLK) beinhaltet, das Abtastsignal (S1) einen zweiten Impuls mit einer Impulsbreite gleich der des ersten Impulses beinhaltet und der zweite Impuls vom ersten Impuls um einen halben Taktzyklus versetzt ist.
5. Abtasttreiber nach einem der Ansprüche 1 bis 4, wobei die dritte Schaltung beinhaltet:

einen achten Transistor (M8), der konfiguriert ist, um als Reaktion auf das Ausgangssignal der zweiten Schaltung eine Antriebsleistung zu einem fünften Knoten (N5) zu übertragen; einen neunten Transistor (M9), der konfiguriert ist, um als Reaktion auf das Ausgangssignal der zweiten Schaltung den fünften Knoten (N5) mit einem sechsten Knoten (N6) zu verbinden; einen zehnten A-Transistor (M10a), der konfiguriert ist, um die Spannung des fünften Knotens (N5) als Reaktion auf eine Spannung des sechsten Knotens (N6) zu steuern; einen zehnten B-Transistor (M10b), der konfiguriert ist, um die Spannungs des sechsten Knotens (N6) als Reaktion auf das erste Ausgangssignal zu steuern; und einen dritten Kondensator (C3), der zwischen

- den fünften Knoten (N5) und den sechsten Knoten (N6) geschaltet ist,  
wobei das Abtastsignal (S1) der Spannung des fünften Knotens (N5) entspricht.
- 5
6. Abtasttreiber (300) nach einem der Ansprüche 1 bis 5, wobei die erste, zweite und dritte Schaltung unter Verwendung von einem von PMOS-Transistoren und NMOS-Transistoren gebildet sind.
- 10
7. OLED-Display, umfassend:
- einen Pixelabschnitt (100) mit mindestens einem Pixel, das mit einer Datenleitung und einer Abtastzeile verbunden ist;
- 15 einen Datentreiber (200), der konfiguriert ist, um ein Datensignal (D1) an die Datenleitung bereitzustellen; und
- einen Abtasttreiber (300), der konfiguriert ist, um ein Abtastsignal (S1) an die Abtastzeile bereitzustellen,
- 20 wobei der Abtasttreiber (300) ein Abtasttreiber nach einem der Ansprüche 1 bis 6 ist.
8. Verfahren zum sequenziellen Treiben eines Abtastsignals auf einer Stufe eines Abtasttreibers (300) nach Anspruch 1, wobei das Verfahren umfasst:
- 25 Speichern der ersten Spannung und der zweiten Spannung in der Stufe als Reaktion auf das Eingangssignal (SP) und eins von dem Taktsignal (CLK) oder dem Taktbalkensignal (CLKB),
- 30 Bereitstellen eines ersten Ausgangssignals, das der zweiten Spannung entspricht, als Reaktion auf die zweite Spannung des Eingangssignals (SP) und das andere von dem Taktsignal (CLK) oder dem Taktbalkensignal (CLKB),
- 35 Empfangen des ersten Schaltungsausgangssignals und des Taktsignals (CLK) oder des Taktbalkensignals (CLKB) und Bereitstellen eines zweiten Ausgangssignals als Reaktion darauf; und
- 40 Empfangen des ersten Schaltungsausgangssignals und des zweiten Schaltungsausgangssignals und Bereitstellen eines Abtastsignals (S1) als Reaktion darauf, wobei das Abtastsignal (S1) einen Impuls mit der gleichen Polarität wie der Impuls des Eingangssignals (SP) umfasst; wobei die erste Schaltung in einer ersten Stufe (301) folgende Schritte durchführt:
- 45 Verwenden eines ersten Transistors (M1), um als Reaktion auf das eine von dem Taktsignal (CLK) oder dem Taktbalkensignal (CLKB) eine Spannung von einer Antriebsleistungsversorgung ( $V_{pos}$ ) zu einem ersten Knoten (N1) zu übertragen;
- Verwenden eines zweiten Transistors (M2), um eine Spannung des ersten Knotens (N1) als Reaktion auf eine Spannung eines zweiten Knotens (N2) zu steuern;
- Verwenden eines dritten Transistors (M3), um eine Spannung des Eingangssignals (SP) als Reaktion auf das eine von dem Taktsignal (CLK) oder dem Taktbalkensignal (CLKB) zu dem zweiten Knoten (N2) zu übertragen; und
- Verwenden des ersten Kondensators (C1), der zwischen den ersten Knoten (N1) und den zweiten Knoten (N2) geschaltet ist, um eine Spannung entsprechend der Differenz zwischen der Antriebsleistungsversorgung ( $V_{pos}$ ) und dem Eingangssignal (SP) zu speichern,
- wobei das Ausgangssignal der ersten Schaltung der Spannung des ersten Knotens (N1) entspricht,
- Verwenden des vierten Transistors (M4), um die Antriebsleistungsversorgung ( $V_{pos}$ ) als Reaktion auf das Ausgangssignal der ersten Schaltung zu einem dritten Knoten (N3) zu übertragen;
- Verwenden des fünften Transistors (M5), um als Reaktion auf das Ausgangssignal der ersten Schaltung den dritten Knoten (N3) mit dem vierten Knoten (N4) zu verbinden,
- Verwenden des sechsten Transistors (M6), um eine Spannung des dritten Knotens (N3) als Reaktion auf eine Spannung des vierten Knotens (N4) zu steuern,
- Verwenden des siebten Transistors (M7), um eine Spannung des vierten Knotens (N4) als Reaktion auf eins von dem Taktsignal (CLK) oder dem Taktbalkensignal (CLKB) zu steuern, und
- wobei das Ausgangssignal der zweiten Schaltung der Spannung des dritten Knotens (N3) entspricht.
9. Verfahren nach Anspruch 8, wobei das Eingangssignal (SP) ein Startimpuls ist, wenn die Stufe eine erste Stufe ist, und das Eingangssignal ein Ausgangssignal von einer vorhergehenden Stufe ist, wenn die Stufe nicht die erste Stufe ist.
- 50 **Revendications**
1. Pilote de balayage (300) comprenant :
- 55 une pluralité d'étages connectés entre eux en série, chacun des étages étant conçu pour recevoir un signal d'horloge (CLK), un signal de barre d'horloge (CLKB) et un signal d'entrée (SP), le signal d'entrée (SP) comprenant une

première tension et une impulsion d'une deuxième tension, chaque étage comprenant un premier circuit qui est conçu pour stocker la première tension et la deuxième tension en réponse au signal d'entrée (SP) et un parmi le signal d'horloge (CLK) ou le signal de barre d'horloge (CLKB) et pour fournir un signal de sortie du premier circuit qui correspond à la deuxième tension en réponse à la deuxième tension du signal d'entrée (SP) et l'autre parmi le signal d'horloge (CLK) ou le signal de barre d'horloge (CLKB) ;

un deuxième circuit conçu pour recevoir le signal de sortie du premier circuit en provenance du premier circuit et de l'un parmi le signal d'horloge (CLK) ou le signal de barre d'horloge (CLKB), et conçu pour fournir un deuxième signal de sortie ; et

un troisième circuit conçu pour recevoir le signal de sortie du premier circuit en provenance du premier circuit et le signal de sortie du deuxième circuit en provenance du deuxième circuit, et conçu pour fournir un signal de balayage (S1) en tant que sortie de l'étage, le signal de balayage (S1) comprenant une impulsion ayant la même polarité que l'impulsion du signal d'entrée (SP) ;

le premier circuit d'un premier étage (301) comprenant :

un premier transistor (M1) conçu pour transférer une tension d'une alimentation de pilotage ( $V_{pos}$ ) vers un premier noeud (N1) en réponse à l'un parmi le signal d'horloge (CLK) ou le signal de barre d'horloge (CLKB) ;

un deuxième transistor (M2) conçu pour contrôler une tension du premier noeud (N1) en réponse à une tension d'un deuxième noeud (N2) ;

un troisième transistor (M3) conçu pour transférer une tension du signal d'entrée (SP) vers le deuxième noeud (N2) en réponse à l'un parmi le signal d'horloge (CLK) ou le signal de barre d'horloge (CLKB) ; et

un premier condensateur (C1) connecté entre le premier noeud (N1) et le deuxième noeud (N2) et conçu pour stocker une tension correspondant à la différence entre l'alimentation de pilotage ( $V_{pos}$ ) et le signal d'entrée (SP),

le signal de sortie du premier circuit correspondant à la tension du premier noeud (N1),

le deuxième circuit comprenant :

un quatrième transistor (M4) conçu pour transférer l'alimentation de pilotage ( $V_{pos}$ )

vers un troisième noeud (N3) en réponse au signal de sortie du premier circuit ;

un cinquième transistor (M5) conçu pour connecter le troisième noeud (N3) au quatrième noeud (N4) en réponse au signal de sortie du premier circuit ;

un sixième transistor (M6) conçu pour contrôler une tension du troisième noeud (N3) en réponse à une tension du quatrième noeud (N4) ;

un septième transistor (M7) conçu pour contrôler une tension du quatrième noeud (N4) en réponse à l'un parmi le signal d'horloge (CLK) ou le signal de barre d'horloge (CLKB) ; et

un deuxième condensateur (C2) connecté entre le troisième noeud (N3) et le quatrième noeud (N4),

le signal de sortie du deuxième circuit correspondant à la tension du troisième noeud (N3).

2. Pilote de balayage (300) selon la revendication 1, dans lequel le signal d'entrée (SP) est une impulsion de démarrage lorsque l'étage est un premier étage et le signal d'entrée est un signal de sortie (S1) d'un étage précédent lorsque l'étage n'est pas le premier étage.

3. Pilote de balayage (300) selon la revendication 1 ou 2, dans lequel le premier circuit dans un deuxième étage (302) succédant directement au premier étage (301) comprend :

un onzième transistor (M11) conçu pour transférer une tension de l'alimentation de pilotage ( $V_{pos}$ ) vers un septième noeud (N7) en réponse à l'autre parmi le signal d'horloge (CLK) ou le signal de barre d'horloge (CLKB) ;

un douzième transistor (M12) conçu pour contrôler une tension du septième noeud (N7) en réponse à une tension d'un huitième noeud (N8) ;

un treizième transistor (M13) conçu pour transférer une tension d'un signal émis par le premier étage (S1) au huitième noeud (N8) en réponse à l'autre parmi le signal d'horloge (CLK) ou le signal de barre d'horloge (CLKB) ;

et

un quatrième condensateur (C4) connecté entre le septième noeud (N7) et le huitième noeud (N8) et conçu pour stocker une tension correspondant à la différence entre l'alimentation de pilotage ( $V_{pos}$ ) et à la tension du signal émis (S1) par le premier étage (301),

le premier circuit du deuxième étage (302) étant conçu pour émettre un signal ayant une tension correspondant à la tension du septième noeud

- (N7).
4. Pilote de balayage (300) selon l'une des revendications 1 à 3, dans lequel le signal d'entrée (SP) comprend une première impulsion ayant une largeur d'impulsion égale à une moitié de cycle du signal d'horloge (CLK), le signal de balayage (S1) comprenant une deuxième impulsion ayant une largeur d'impulsion égale à celle de la première impulsion et la deuxième impulsion étant décalée par rapport à la première impulsion d'une moitié de cycle d'horloge.
5. Pilote de balayage selon l'une des revendications 1 à 4, dans lequel le troisième circuit comprend :
- un huitième transistor (M8) conçu pour transférer une énergie de pilotage vers un cinquième noeud (N5) en réponse au signal de sortie du deuxième circuit ;
- un neuvième transistor (M9) conçu pour connecter le cinquième noeud (N5) à un sixième noeud (N6) en réponse au deuxième signal de sortie :
- un dixième transistor A (M10a) conçu pour contrôler la tension du cinquième noeud (N5) en réponse à une tension du sixième noeud (N6) ; un dixième transistor B (M10b) conçu pour contrôler la tension du sixième noeud (N6) en réponse au premier signal de sortie ; et
- un troisième condensateur (C3) connecté entre le cinquième noeud (N5) et le sixième noeud (N6),
- le signal de balayage (S1) correspondant à la tension du cinquième noeud (N5).
6. Pilote de balayage (300) selon l'une des revendications 1 à 5, dans lequel les premier, deuxième et troisième circuits sont formés à l'aide de transistors PMOS ou de transistors NMOS.
7. Affichage à diodes électroluminescentes organiques comprenant :
- une portion de pixel (100) ayant au moins un pixel connecté à une ligne de données et une ligne de balayage ;
- un pilote de données (200) conçu pour fournir un signal de données (D1) à la ligne de données ; et
- un pilote de balayage (300) conçu pour fournir un signal de balayage (S1) à la ligne de balayage,
- le pilote de balayage (300) étant selon l'une des revendications 1 à 6.
8. Procédé de pilotage séquentiel d'un signal de ba-

layage dans un étage d'un pilote de balayage (300) selon la revendication 1, ce procédé comprenant :

le stockage de la première tension et de la deuxième tension dans l'étage en réponse au signal d'entrée (SP) et à l'un parmi le signal d'horloge (CLK) ou le signal de barre d'horloge (CLKB),

la fourniture d'un premier signal de sortie qui correspond à la deuxième tension en réponse à la deuxième tension du signal d'entrée (SP) et à l'autre parmi le signal d'horloge (CLK) ou le signal de barre d'horloge (CLKB),

la réception du signal de sortie du premier circuit et d'un parmi le signal d'horloge (CLK) ou le signal de barre d'horloge (CLKB), et la fourniture d'un deuxième signal de sortie en réponse à celui-ci ; et

la réception du signal de sortie du premier circuit et du signal de sortie du deuxième circuit et fourniture d'un signal de balayage (S1) en réponse à ceux-ci, le signal de balayage (S1) comprenant une impulsion ayant la même polarité que l'impulsion du signal d'entrée (SP) ;

le premier circuit d'un premier étage (301) exécutant les étapes suivantes :

utilisation d'un premier transistor (M1) pour transférer une tension d'une alimentation de pilotage ( $V_{pos}$ ) vers un premier noeud (N1) en réponse à l'un parmi le signal d'horloge (CLK) ou le signal de barre d'horloge (CLKB),

utilisation d'un deuxième transistor (M2) pour contrôler une tension du premier noeud (N1) en réponse à une tension d'un deuxième noeud (N2) ;

utilisation d'un troisième transistor (M3) pour transférer une tension du signal d'entrée (SP) au deuxième noeud (N2) en réponse à l'un parmi le signal d'horloge (CLK) ou le signal de barre d'horloge (CLKB) ; et

utilisation d'un premier condensateur (C1) connecté entre le premier noeud (N1) et le deuxième noeud (N2) pour stocker une tension correspondant à la différence entre l'alimentation de pilotage ( $V_{pos}$ ) et le signal d'entrée (SP),

le signal de sortie du premier circuit correspondant à la tension du premier noeud (N1),

utilisation du quatrième transistor (M4) pour transférer l'alimentation de pilotage ( $V_{pos}$ ) vers un troisième noeud (N3) en réponse au signal de sortie du premier circuit ;

utilisation du cinquième transistor (M5) pour connecter le troisième noeud (N3) au quatrième noeud (N4) en réponse au signal de sortie du

premier circuit,  
utilisation du sixième transistor (M6) pour contrôler une tension du troisième noeud (N3) en réponse à une tension du quatrième noeud (N4),  
utilisation du septième transistor (M7) pour contrôler une tension du quatrième noeud (N4) en réponse à l'un parmi le signal d'horloge (CLK) ou le signal de barre d'horloge (CLKB) et le signal de sortie du deuxième circuit correspondant à la tension du troisième noeud (N3).

9. Procédé selon la revendication 8, dans lequel le signal d'entrée (SP) est une impulsion de démarrage lorsque l'étage est un premier étage et le signal d'entrée est un signal de sortie d'un étage précédent lorsque l'étage n'est pas le premier étage.

5

10

15

20

25

30

35

40

45

50

55

FIG. 1

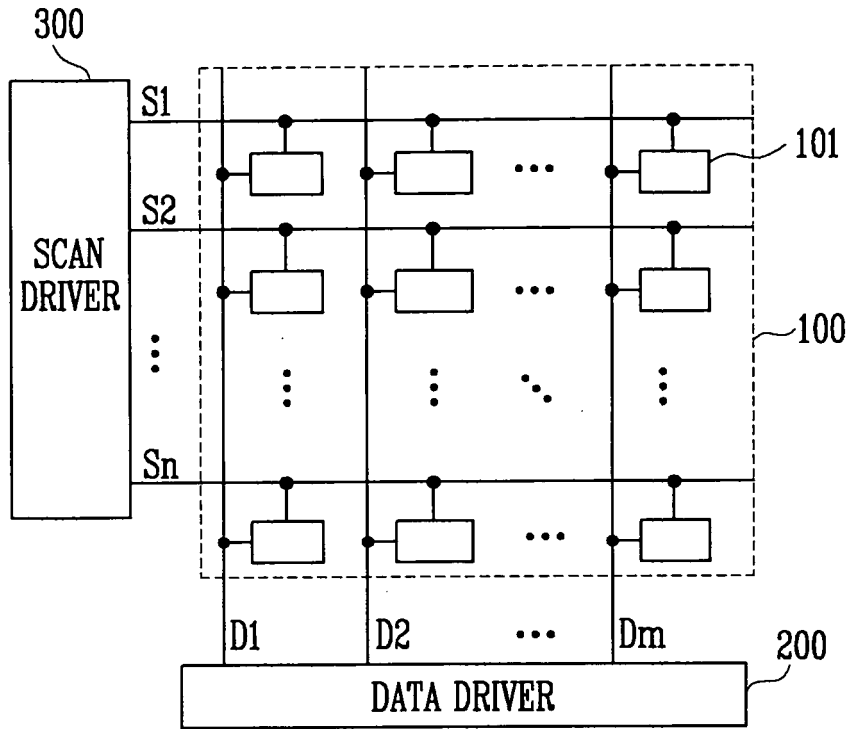


FIG. 2

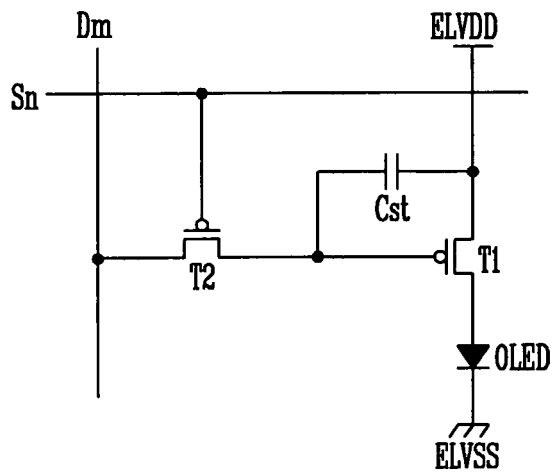


FIG. 3

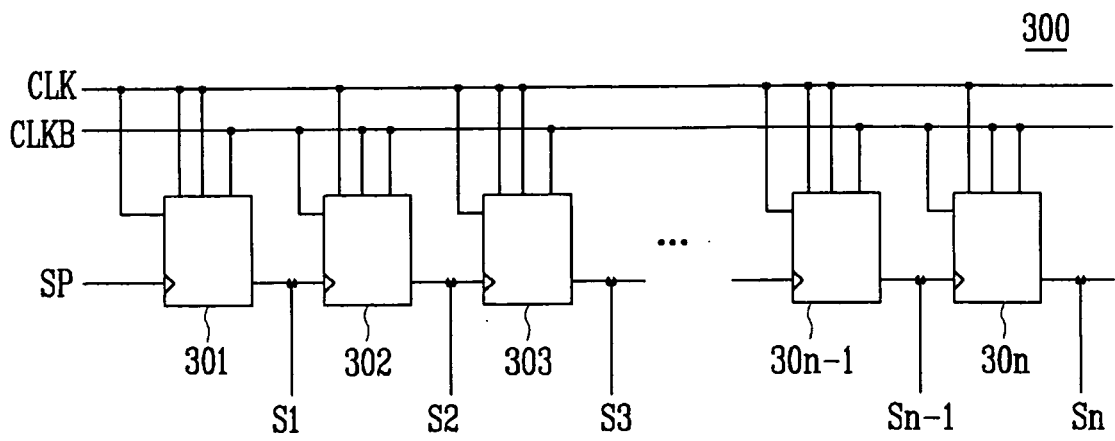
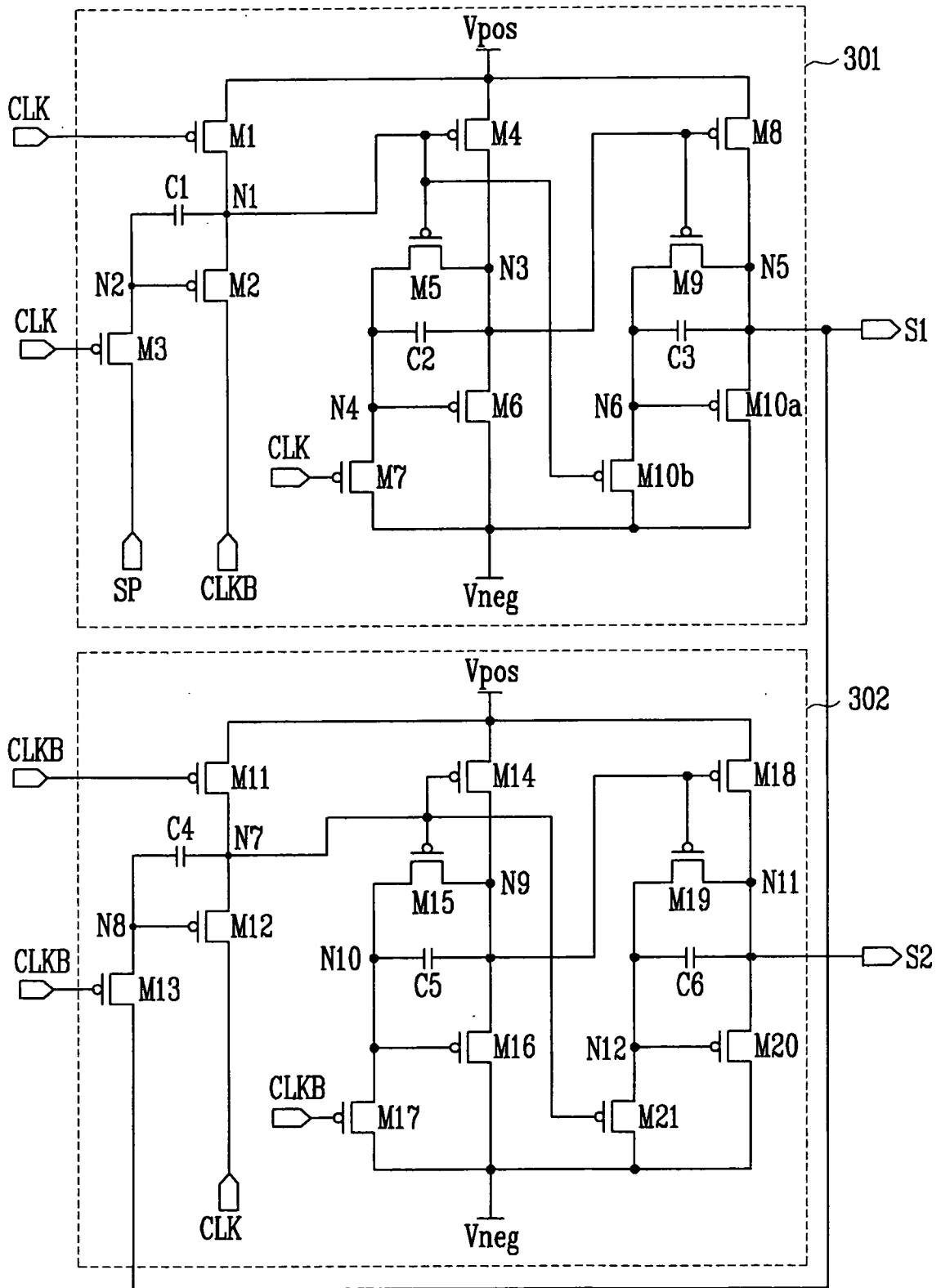


FIG. 4



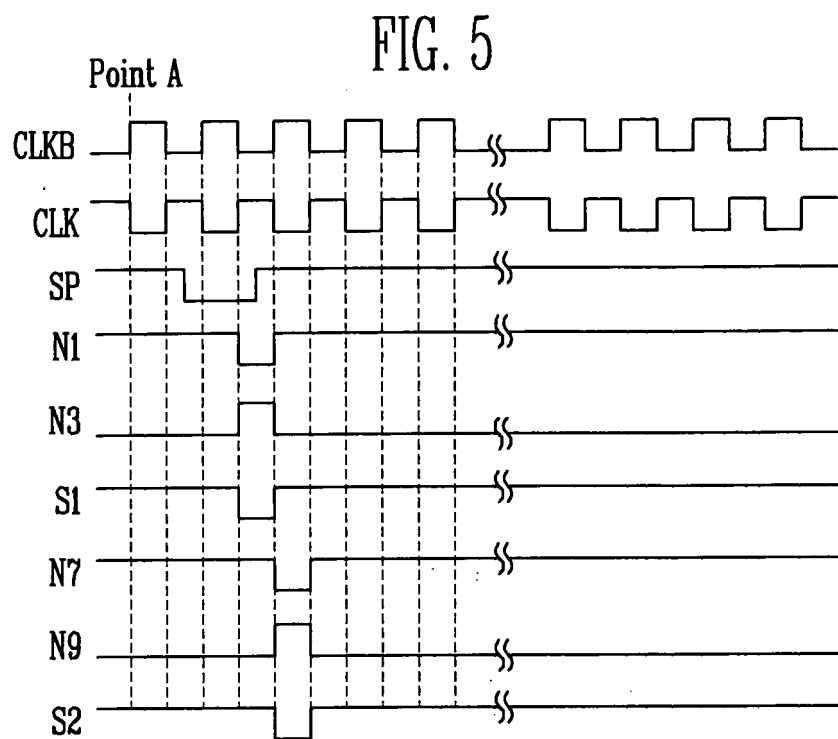


FIG. 6

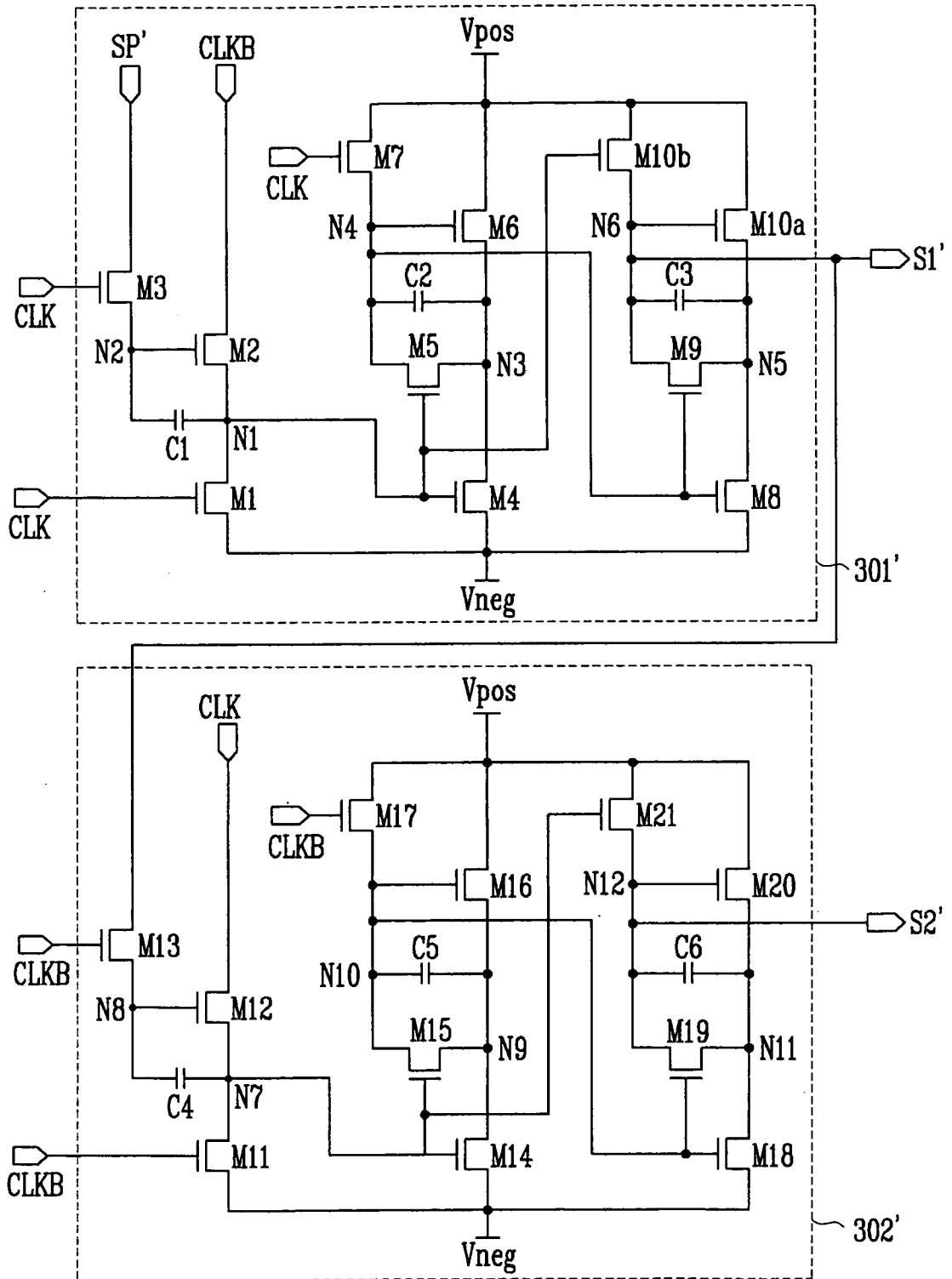
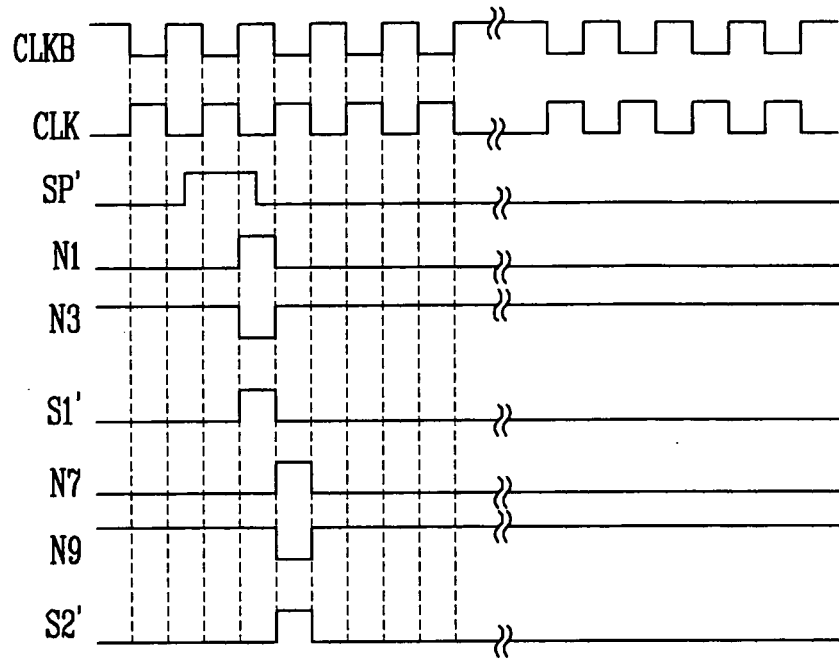


FIG. 7



**REFERENCES CITED IN THE DESCRIPTION**

*This list of references cited by the applicant is for the reader's convenience only. It does not form part of the European patent document. Even though great care has been taken in compiling the references, errors or omissions cannot be excluded and the EPO disclaims all liability in this regard.*

**Patent documents cited in the description**

- US 20050184763 A [0007]
- JP S58182196 B [0007]
- US 4084106 A [0007]
- US 20030128180 A [0007]
- US 20060156118 A [0008]
- EP 1843317 A1 [0009]
- EP 1763003 A2 [0009]

专利名称(译)	扫描驱动器和扫描信号驱动方法以及使用其的有机发光显示器		
公开(公告)号	<a href="#">EP1903552B1</a>	公开(公告)日	2018-09-19
申请号	EP2007253750	申请日	2007-09-21
[标]申请(专利权)人(译)	三星斯笛爱股份有限公司		
申请(专利权)人(译)	三星SDI CO., LTD.		
当前申请(专利权)人(译)	三星DISPLAY CO., LTD.		
[标]发明人	CHUNG BO YONG		
发明人	CHUNG, BO YONG		
IPC分类号	G09G3/3266 G11C19/18		
CPC分类号	G09G3/3225 G09G3/3266 G09G2300/0809 G11C19/184		
优先权	1020060092493 2006-09-22 KR		
其他公开文献	EP1903552A2 EP1903552A3		
外部链接	<a href="#">Espacenet</a>		

摘要(译)

扫描驱动器包括彼此串联连接的多个级，每个级包括所有NMOS晶体管或所有PMOS晶体管，并且被配置为接收时钟信号，时钟条信号和输入信号。每个级包括第一电路，该第一电路被配置为响应于输入信号以及时钟信号或时钟条信号之一存储第一电源电压和第二电源电压。第一电源电压和第二电源电压各自对应于输入信号的电压，并响应于从该系列级的前一级输出的第二电源电压而提供对应于第二电源电压的第一输出信号。，以及时钟信号或时钟信号的另一个。

