



(11) **EP 2 184 731 A1**

(12) **EUROPEAN PATENT APPLICATION**

(43) Date of publication: **12.05.2010 Bulletin 2010/19** (51) Int Cl.: **G09G 3/32^(2006.01)**

(21) Application number: **09175396.2**

(22) Date of filing: **09.11.2009**

(84) Designated Contracting States:
AT BE BG CH CY CZ DE DK EE ES FI FR GB GR HR HU IE IS IT LI LT LU LV MC MK MT NL NO PL PT RO SE SI SK SM TR
Designated Extension States:
AL BA RS

(72) Inventor: **Lee, An-Su**
Gyunggi-do (KR)

(74) Representative: **Gulde Hengelhaupt Ziebig & Schneider**
Patentanwälte - Rechtsanwälte
Wallstraße 58/59
D-10179 Berlin (DE)

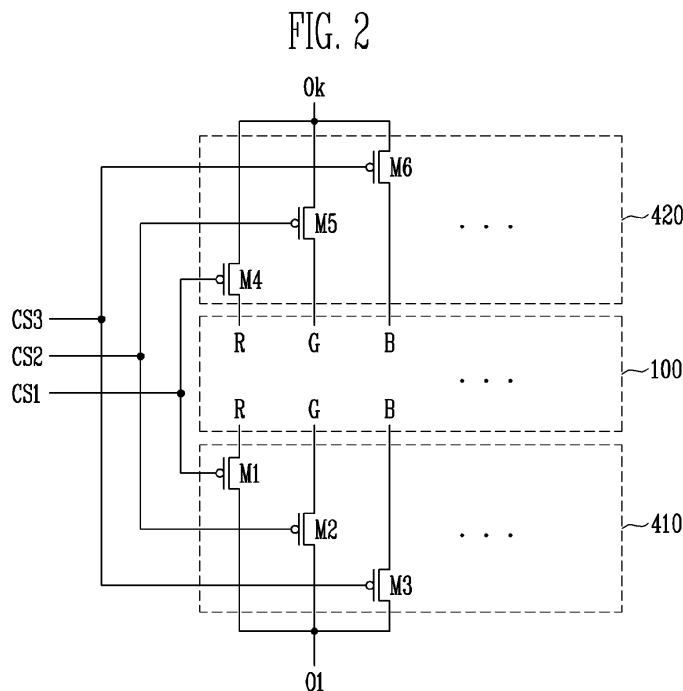
(30) Priority: **07.11.2008 KR 20080110315**

(71) Applicant: **Samsung Mobile Display Co., Ltd.**
Yongin-City
Gyeonggi-do (KR)

(54) **Organic light emitting display device**

(57) An organic light emitting display device includes a display unit (100) including a plurality of data lines (D1,...Dm), a plurality of scan lines (S1,...Sn), and pixels (101) at crossing regions of the data lines and scan lines, wherein the plurality of data lines are arranged into a plurality of groups; a data driver (200) for supplying data signals to the data lines; a first demultiplexer (410) at a first side of the display unit for associating the groups to first corresponding output channels of the data driver,

and for coupling the output channels to the data lines in the first corresponding groups in accordance with control signals (CS1n,CS2n,CS3n); a second demultiplexer (420) at a second side of the display unit opposite the first side for associating the groups to second corresponding output channels of the data driver, and for coupling the output channels to the data lines in the second corresponding groups in accordance with the control signals.



EP 2 184 731 A1

Description

BACKGROUND OF THE INVENTION

1. Field of the Invention

[0001] The present invention relates to an organic light emitting display device.

2. Description of Related Art

[0002] Recently, various types of flat panel display devices have been developed which have reduced weight and volume as compared to cathode ray tubes. The flat panel display devices include liquid crystal display devices, field emission display devices, plasma display devices, organic light emitting display devices, and others.

[0003] Among the flat panel display devices, organic light emitting display devices have excellent color reproducibility, slimness, and other advantages. Accordingly, it is widely used in a variety of applications such as PDAs and MP3 players, in addition to mobile phones.

[0004] An organic light emitting display device displays images using organic light emitting diodes (OLEDs) in which luminance is determined corresponding to an amount of current input to the OLEDs.

[0005] An organic light emitting diode includes an anode electrode, a cathode electrode, and a red, green or blue light emitting layer interposed between the anode and cathode electrodes. In the organic light emitting diode, luminance of light is determined depending on an amount of current flowing between the anode and cathode electrodes.

[0006] Red, green and blue light emitting layers are formed of different materials. Thus, although the same amount of current is applied to the red, green and blue light emitting layers, their light emitting efficiencies are different. Therefore, separate gammas are applied to the red, green and blue light emitting layers.

[0007] In a conventional organic light emitting display device, a data driver is generally positioned at a side of a panel, i.e., along an upper or lower portion of the panel. Here, the data driver applies data signals to respective pixels provided in the panel. When the data driver is positioned at a lower portion of the panel, it is assumed that the data driver has 33 pins, and the 33 pins are sequentially numbered from left to right. Then, red, green and blue data are repeatedly output sequentially from a first pin to a thirty-third pin. When the data driver is positioned at an upper portion of the panel, the order of pin numbers is changed, and red, green and blue data are repeatedly output sequentially from the thirty-third pin to the first pin.

[0008] At this time, separate gammas are applied to the respective pins. When the data driving unit is positioned at the lower portion of the panel, a red gamma is applied to a first pin, a fourth pin, a seventh pin, ..., a green gamma is applied to a second pin, a fifth pin, an eighth pin, ..., and a blue gamma is applied to a third pin,

a sixth pin, a ninth pin, That is, gammas suitable for the respective colors are applied to data output through respective lines.

[0009] However, when the same data driver is positioned at an upper portion of the panel, the order of the pin numbers is changed. Therefore, colors of data do not correspond to the gammas. That is, the red gamma is applied to the first pin, the fourth pin, the seventh pin, ..., the green gamma is applied to the second pin, the fifth pin, the eighth pin, ..., and the blue gamma is applied to the third pin, the sixth pin, the ninth pin, However, blue data are output through the first pin, the fourth pin, the seventh pin, ..., green data are output through the second pin, the fifth pin, the eighth pin, ..., and red data are output through the third pin, the sixth pin, the ninth pin, Therefore, when this data driver is positioned at the upper portion of the panel, luminance and/or white balance is compromised. Accordingly, the data driver is designed differently depending on positions of the panel in which the data driver is mounted. For this reason, manufacturing cost is increased.

SUMMARY OF THE INVENTION

[0010] Accordingly, the present invention provides an organic light emitting display device as set forth in claim 1 which allows a position of a data driver mounted in the display device to be freely set. Preferred embodiments are subject of the dependent claims 2 through 9.

BRIEF DESCRIPTION OF THE DRAWINGS

[0011] The accompanying drawings illustrate exemplary embodiments of the present invention, and, together with the description, serve to explain the principles of the present invention.

[0012] FIG. 1 is a schematic block diagram showing the structure of an organic light emitting display device according to an embodiment of the present invention.

[0013] FIG. 2 shows a first embodiment of a connection of first and second demultiplexer units employed in the organic light emitting display device according to aspects of the present invention.

[0014] FIG. 3 is a timing diagram showing signals input to the organic light emitting display device of FIG. 2.

[0015] FIG. 4 shows a second embodiment of the connection of the first and second demultiplexer units employed in the organic light emitting display device according to aspects of the present invention.

[0016] FIG. 5 is a timing diagram showing signals input to the organic light emitting display device of FIG. 4.

DETAILED DESCRIPTION OF EXEMPLARY EMBODIMENTS

[0017] Hereinafter, certain exemplary embodiments according to the present invention will be described with reference to the accompanying drawings. Here, when a

first element is described as being coupled to a second element, the first element may be directly coupled to the second element or may be indirectly coupled to the second element via one or more additional elements. Further, some of the elements that are not essential to the complete understanding of the invention are omitted for clarity. Also, like reference numerals refer to like elements throughout.

[0018] FIG 1 is a schematic block diagram showing the structure of an organic light emitting display device according to an embodiment of the present invention.

[0019] Referring to FIG. 1, the organic light emitting display device includes a display unit 100, a data driver 200, a scan driver 300, a first demultiplexer unit 410, a second demultiplexer unit 420 and a controller 500.

[0020] A plurality of pixels 101 are arranged in the display unit 100, and each of the pixels 101 includes an organic light emitting diode (not shown). The display unit 100 includes n scan lines S_1, S_2, \dots, S_{n-1} and S_n , and m data lines D_1, D_2, \dots, D_{m-1} and D_m . Here, the n scan lines S_1, S_2, \dots, S_{n-1} and S_n extend in a row direction and supply scan signals. The m data lines D_1, D_2, \dots, D_{m-1} and D_m extend in a column direction and supply data signals.

[0021] The display unit 100 is driven by receiving first and second power sources. In the display unit 100, current flows through the organic light emitting diodes by utilizing scan signals, data signals, light emission signals and the first and second power sources, so that the display unit 100 emits light to display images. The plurality of pixels includes red, green and blue sub-pixels, R, G and B.

[0022] The data driver 200 generates data signals using image signals (R, G and B data signals) having red, green and blue components. The data driver 200 applies data signals output through output channels 01, 02, ..., Ok-1 and Ok to the display unit 100. Here, the output channels 01, 02, ..., Ok-1 and Ok are connected to the data lines D_1, D_2, \dots, D_{m-1} and D_m of the display unit 100. The data driver 200 sequentially outputs three data signals from each output channel. That is, red, green and blue data signals are sequentially output from each output channel of the data driver 200, so that the number of output channels of the data driver 200 can be decreased.

[0023] The data driver 200 is positioned above or below the display unit 100. When the data driver 200 is positioned below the display unit 100 as shown in FIG. 1, the data driver 200 is coupled to the display unit 100 through the first demultiplexer unit 410. When the data driver 200 is positioned above the display unit 100, the data driver 200 is coupled to the display unit 100 through the second demultiplexer 420.

[0024] In the embodiment of the present invention, the data driver 200 positioned below the display unit 100 will be described as an example.

[0025] The scan driver 300 generates scan signals. The scan driver 300 is connected to the scan lines S_1, S_2, \dots, S_{n-1} and S_n , and supplies a scan signal to specific

rows of the display unit 100. A data signal output from the data driver 200 is supplied to a pixel 101 receiving the scan signal, and a voltage corresponding to the data signal is applied to the pixel 101.

[0026] Each of the first and second demultiplexer units includes a plurality of demultiplexers. The respective demultiplexers divide the plurality of data lines into a plurality of groups, and each of the groups is coupled to an output channel of the data driver 200 through a demultiplexer. In other words, an output channel of the data driver 200 is coupled to a demultiplexer so that the output channel is coupled to three data lines through the demultiplexer. Data signals of three different colors are output from the output channel, and each of the data signals is supplied to a corresponding data line by the demultiplexer.

[0027] Operations of the first and second demultiplexer units 410 and 420 will now be described. When red, green and blue data signals are output from an output channel of the data driver 200, the first or second demultiplexer unit 410 or 420 time-divisionally controls a connection sequence between the plurality of data lines and the output channels in accordance with timing of the output data signals, so that the red, green and blue data signals output from the output channel are transmitted to data lines coupled to red, green and blue pixels, respectively. Therefore, although red, green and blue gammas are individually used, red data are provided only to red pixels, green data are provided only to green pixels, and blue data are provided only to blue pixels, depending on operation of the first or second demultiplexer 410 or 420. Accordingly, luminance or white balance is not lost due to the mismatch of gammas.

[0028] The controller 500 controls the first and second demultiplexer units 410 and 420. The controller 500 generates control signals depending on whether the data driver 200 is positioned above or below the display unit 100. Accordingly, the controller 500 controls data signals output from the data driver 200 to be applied to data lines coupled to the pixels.

[0029] Hereinafter, a connection of the display unit 100, the first and second demultiplexer units 410 and 420 and the data driver 200 will be described in detail.

[0030] Each of the plurality of pixels constituting the display unit 100 includes three sub-pixels, i.e., red, green and blue sub-pixels, R, G and B. The respective sub-pixels R, G and B are coupled to data lines and receive data signals through the data lines, respectively.

[0031] The respective pixels 101 have red, green and blue sub-pixels, R, G and B repeatedly positioned from left to right of the display unit 100.

[0032] The data driver 200 is coupled to the display unit 100 in one of two configurations. In a first configuration, the output channels 01, 02, ..., Ok-1 and Ok of the data driver 200 sequentially output red, green and blue data signals. In a second configuration, the output channels 01, 02, ..., Ok-1 and Ok of the data driver 200 sequentially output blue, green and red data signals.

[0033] In the first configuration, the data driver 200 is positioned below the display unit 100. In the second configuration, the data driver 200 is positioned above the display unit 100. Here, since the data driver 200 is designed to be positioned above the pixel unit 100 in the second configuration, the order of the output channels numbered from left to right is reversed as compared to the first configuration.

[0034] In the first configuration, the output channels of the data driver 200 are arranged from left to right in the order of a first output channel, a second output channel, ..., a (k-1)-th output channel and a k-th output channel, O1, O2, ..., Ok-1 and Ok. In the display unit 100, red, green and blue pixels are repeatedly positioned from left to right of the display unit 100. Therefore, if red, green and blue data are sequentially output from an output channel, the first demultiplexer unit 410 allows the red, green and blue data to be respectively provided to red, green and blue pixels, R, G and B.

[0035] However, in the second configuration, the operation of the data driver 200 is reversed as compared to the first configuration. Therefore, the output channels of the data driver 200 are arranged from left to right directions in the order of a k-th output channel, a (k-1)-th output channel, ..., a second output channel and a first output channel, Ok, Ok-1, ..., O2 and O1. If red, green and blue data are sequentially output from an output channel, the second demultiplexer unit 420 allows the red, green and blue data to be respectively provided to red, green and blue pixels, R, G and B. Further, if blue, green and red data are sequentially output from an output channel, the second demultiplexer unit 420 allows the blue, green and red data to be respectively provided to blue, green and red pixels, B, G and R through control of the controller 500.

[0036] That is, red, green and blue data output from an output channel are respectively provided to red, green and blue pixels R, G and B by an operation of either the first or second demultiplexer unit 410 or 420, regardless of the position of the data driver 200.

[0037] Therefore, red, green and blue gammas are correctly applied to the red, green and blue data regardless of the position of the data driver 200. Accordingly, suitable gammas are respectively applied to data signals and pixels, so that white balance is not lost.

[0038] FIG. 2 shows a first embodiment of a connection of the first and second demultiplexer units employed in the organic light emitting display device according to aspects of the present invention. FIG. 3 is a timing diagram showing signals input to the organic light emitting display device of FIG. 2. The connection of the first and second demultiplexer units 410 and 420 will be described below with reference to FIGS. 2 and 3.

[0039] In the first embodiment, red, green and blue data are sequentially output from an output channel regardless of the position of the data driver 200.

[0040] The first demultiplexer unit 410 is formed below the display unit 100 and includes first to third transistors,

M1, M2 and M3.

[0041] A first electrode of the first transistor M1 is coupled to an output channel O1 through which data signals are output, and a second electrode of the first transistor M1 is coupled to a data line coupled to a red pixel R. A gate electrode of the first transistor M1 is coupled to a first control line CS1 through which a first control signal CS1 n is supplied.

[0042] A first electrode of the second transistor M2 is coupled to the output channel O1, and a second electrode of the second transistor M2 is coupled to a data line coupled to a green pixel G. A gate electrode of the second transistor M2 is coupled to a second control line CS2 through which a second control signal CS2n is supplied.

[0043] A first electrode of the third transistor M3 is the output channel O1, and a second electrode of the third transistor M3 is coupled to a data line coupled to a blue pixel B. A gate electrode of the third transistor M3 is coupled to a third control line CS3 through which a third control signal CS3n is supplied.

[0044] The second demultiplexer unit 420 is formed above the display unit 100 and includes fourth to sixth transistors, M4, M5 and M6.

[0045] A first electrode of the fourth transistor M4 is coupled to an output channel Ok through which data signals are output, and a second electrode of the fourth transistor M4 is coupled to a data line coupled to a red pixel R. A gate electrode of the fourth transistor M4 is coupled to the first control line CS1 through which the first control signal CS1 n is supplied.

[0046] A first electrode of the fifth transistor M5 is coupled to the output channel Ok, and a second electrode of the fifth transistor M5 is coupled to a data line coupled to a green pixel G. A gate electrode of the fifth transistor M5 is coupled to the second control line CS2 through which the second control signal CS2n is supplied.

[0047] A first electrode of the sixth transistor M6 is coupled to the output channel Ok, and a second electrode of the sixth transistor M6 is coupled to a data line coupled to a blue pixel B. A gate electrode of the sixth transistor M6 is coupled to the third control line CS3 through which the third control signal CS3n is supplied.

[0048] The first and second electrodes of each of the transistors are source and drain electrodes. If the first electrode is a source electrode, the second electrode is a drain electrode. If the first electrode is a drain electrode, the second electrode is a source electrode.

[0049] Operations of the first and second demultiplexer unit 410 and 420 will now be described. The first, second and third control signals CS1 n, CS2n and CS3n sequentially become low states when a scan signal SIn maintains a low state, which occurs after a horizontal synchronization signal Hsync becomes a low state. After that, the first, second and third control signals CS1 n, CS2n and CS3n sequentially become low states again when a scan signal SIn again becomes a low state, after a subsequent horizontal synchronization signal Hsync becomes a low state. The data signals are divided into

red, green and blue data signals, and each of the data signals is supplied while the corresponding one of the control signals maintains a low state.

[0050] First, when the first control signal CS1 n becomes a low state, the first and fourth transistors M1 and M4 are turned on. At this time, a red data signal is output to the output channels O1 and Ok of the data driver 200. If the data driver 200 is positioned below the display unit 100, the red data signal is provided to a red pixel R through a data line via the first transistor M1. If the data driver 200 is positioned above the display unit 100, the red data signal is provided to a red pixel R through a data line via the fourth transistor M4.

[0051] When the second control signal CS2n becomes a low state, the second and fifth transistors M2 and M5 are turned on. At this time, a green data signal is output to the output channels O1 and Ok of the data driver 200. If the data driver 200 is positioned below the display unit 100, the green data signal is provided to a green pixel G through a data line via the second transistor M2. If the data driver 200 is positioned above the display unit 100, the green data signal is provided to a green pixel G through a data line via the fifth transistor M5.

[0052] When the third control signal CS3n becomes a low state, the third and sixth transistors M3 and M6 are turned on. At this time, a blue data signal is output to the output channels O1 and Ok of the data driver 200. If the data driver 200 is positioned below the display unit 100, the blue data signal is provided to a blue pixel G through a data line via the third transistor M3. If the data driver 200 is positioned above the display unit 100, the blue data signal is provided to a blue pixel G through a data line via the sixth transistor M6.

[0053] FIG. 4 shows a second embodiment of the connection of the first and second demultiplexer units employed in the organic light emitting display device according to aspects of the present invention. FIG. 5 is a timing diagram showing signals input to the organic light emitting display device of FIG. 4. The connection of the first and second demultiplexer units 410 and 420 will be described below with reference to FIGS. 4 and 5.

[0054] The order of red, green and blue data output from an output channel is reversed depending on whether the data driver 200 is positioned above or below the display unit 100.

[0055] The first demultiplexer unit 410 is formed below the display unit 100 and includes first to third transistors, M1, M2 and M3.

[0056] A first electrode of the first transistor M1 is coupled to an output channel O1 through which data signals are output, and a second electrode of the first transistor M1 is coupled to a data line coupled to a red pixel R. A gate electrode of the first transistor M1 is coupled to a first control line CS1 through which a first control signal CS1 n is supplied.

[0057] A first electrode of the second transistor M2 is coupled to the output channel O1, and a second electrode of the second transistor M2 is coupled to a data line cou-

pled to a green pixel G. A gate electrode of the second transistor M2 is coupled to a second control line CS2 through which a second control signal CS2n is supplied.

[0058] A first electrode of the third transistor M3 is coupled to the output channel O1, and a second electrode of the third transistor M3 is coupled to a data line coupled to a blue pixel B. A gate electrode of the third transistor M3 is coupled to a third control line CS3 through which a third control signal CS3n is supplied.

[0059] The second demultiplexer unit 420 is formed above the display unit 100 and includes fourth to sixth transistors, M4, M5 and M6.

[0060] A first electrode of the fourth transistor M4 is coupled to an output channel Ok through which data signals are output, and a second electrode of the fourth transistor M4 is coupled to a data line coupled to a red pixel R. A gate electrode of the fourth transistor M4 is coupled to the third control line CS3 through which the third control signal CS3n is supplied.

[0061] A first electrode of the fifth transistor M5 is coupled to the output channel Ok, and a second electrode of the fifth transistor M5 is coupled to a data line coupled to a green pixel G. A gate electrode of the fifth transistor M5 is coupled to the second control line CS2 through which the second control signal CS2n is supplied.

[0062] A first electrode of the sixth transistor M6 is coupled to the output channel Ok, and a second electrode of the sixth transistor M6 is coupled to a data line coupled to a blue pixel B. A gate electrode of the sixth transistor M6 is coupled to the first control line CS1 through which the first control signal CS1 n is supplied.

[0063] Operations of the first and second demultiplexer unit 410 and 420 will now be described. The first, second and third control signals CS1 n, CS2n and CS3n sequentially become low states when a scan signal SIn maintains a low state, which occurs after a horizontal synchronization signal Hsync becomes a low state. After that, the first, second and third control signals CS1 n, CS2n and CS3n sequentially become low states again when a scan signal SIn again becomes a low state, after a subsequent horizontal synchronization signal Hsync becomes a low state. The data signals are divided into red, green and blue data signals, and each of the data signals is supplied while the corresponding one of the control signals maintains a low state.

[0064] First, when the first control signal CS1 n becomes a low state, the first and sixth transistors M1 and M6 are turned on. At this time, if the data driver 200 is positioned below the display unit 100, a red data signal is output to the output channel O1 of the data driver 200. If the data driver 200 is positioned above the display unit 100, a blue data signal is output to the output channel Ok of the data driver 200. Therefore, if the data driver 200 is positioned below the display unit 100, the red data signal is provided to a red pixel R through a data line via the first transistor M1. If the data driver 200 is positioned above the display unit 100, the blue data is provided to a blue pixel B through a data line via the sixth transistor

M6.

[0065] When the second control signal CS2n becomes a low state, the second and fifth transistors M2 and M5 are turned on. At this time, a green data signal is output to the output channels O1 and Ok of the data driver 200, regardless of the position of the data driver 200. If the data driver 200 is positioned below the display unit 100, the green data signal is provided to a green pixel G through a data line via the second transistor M2. If the data driver 200 is positioned above the display unit 100, the green data signal is provided to a green pixel G through a data line via the fifth transistor M5.

[0066] When the third control signal CS3n becomes a low state, the third and fourth transistors M3 and M4 are turned on. At this time, if the data driver 200 is positioned below the display unit 100, a blue data signal is output to the output channel O1 of the data driver 200. If the data driver 200 is positioned above the display unit 100, a red data signal is output to the output channel Ok of the data driver 200. Therefore, if the data driver 200 is positioned below the display unit 100, the blue data signal is provided to a blue pixel B through a data line via the third transistor M3. If the data driver 200 is positioned above the display unit 100, the red data signal is provided to a red pixel R through a data line via the fourth transistor M4.

Claims

1. An organic light emitting display device, comprising:

a display unit comprising a plurality of data lines extending in a first direction, a plurality of scan lines extending in a second direction crossing the first direction, and pixels disposed at crossing regions of the plurality of data lines and the plurality of scan lines, wherein the plurality of data lines are arranged into a plurality of groups; a data driver adapted to supply red, green and blue data signals to a plurality of output channels; a first demultiplexer at a first side of the display unit, the first demultiplexer being adapted to associate each of the groups of data lines to respective first output channels of the data driver, and to couple the first output channels to the data lines in the corresponding group in accordance with control signals; a second demultiplexer at a second side of the display unit opposite the first side, the second demultiplexer being adapted to associate each of the groups to respective second output channels of the data driver, and to couple the second output channels to the data lines in the corresponding group in accordance with the control signals; and a controller adapted to output the control signals,

wherein the data driver is either arranged at the first side and coupled to the first demultiplexer, or at the second side and coupled to the second demultiplexer.

2. The organic light emitting display device of claim 1, wherein the data driver is adapted to sequentially output red, green and blue data signals through the output channels during a horizontal period.

3. The organic light emitting display device of one of the claims 1 or 2, wherein the data driver is positioned at the second side and coupled to the second demultiplexer, the data driver being further adapted to sequentially output blue, green and red data signals through the output channels during a horizontal period.

4. The organic light emitting display device of one of the preceding claims, wherein the first demultiplexer and the second demultiplexer are each configured to supply data signals to all of the plurality of data lines.

5. The organic light emitting display device of one of the preceding claims, wherein the data driver is adapted to sequentially supply red, green and blue data signals, and wherein the first demultiplexer or the second demultiplexer are configured to supply the red data signals to a data line corresponding to a red pixel of the pixels from among the plurality of data lines, to supply the green data signals to a data line corresponding to a green pixel of the pixels from among the plurality of data lines, and to supply the blue data signals to a data line corresponding to a blue pixel of the pixels from among the plurality of data lines.

6. The organic light emitting display device of one of the preceding claims, wherein the first demultiplexer comprises a first transistor coupled to the data line corresponding to the red pixel, a second transistor coupled to the data line corresponding to the green pixel, and a third transistor coupled to the data line corresponding to the blue pixel; and wherein the second demultiplexer comprises a fourth transistor coupled to the data line corresponding to the red pixel, a fifth transistor coupled to the data line corresponding to the green pixel, and a sixth transistor coupled to the data line corresponding to the blue pixel.

7. The organic light emitting display device of claim 6, wherein gate electrodes of the first and fourth transistors are coupled together, gate electrodes of the second and fifth transistors are coupled together, and gate electrodes of the third and sixth transistors are coupled together, and wherein the control signals

are supplied to the respective gate electrodes for controlling the corresponding transistors.

8. The organic light emitting display device of claim 6, wherein gate electrodes of the first and sixth transistors are coupled together, gate electrodes of the second and fifth transistors are coupled together, and gate electrodes of the third and fourth transistors are coupled together, and wherein the control signals are supplied to the respective gate electrodes for controlling the corresponding transistors.
9. The organic light emitting display of one of the claims 6 through 8, wherein the first through six transistors are of a same polarity type.

5

10

15

20

25

30

35

40

45

50

55

FIG. 1

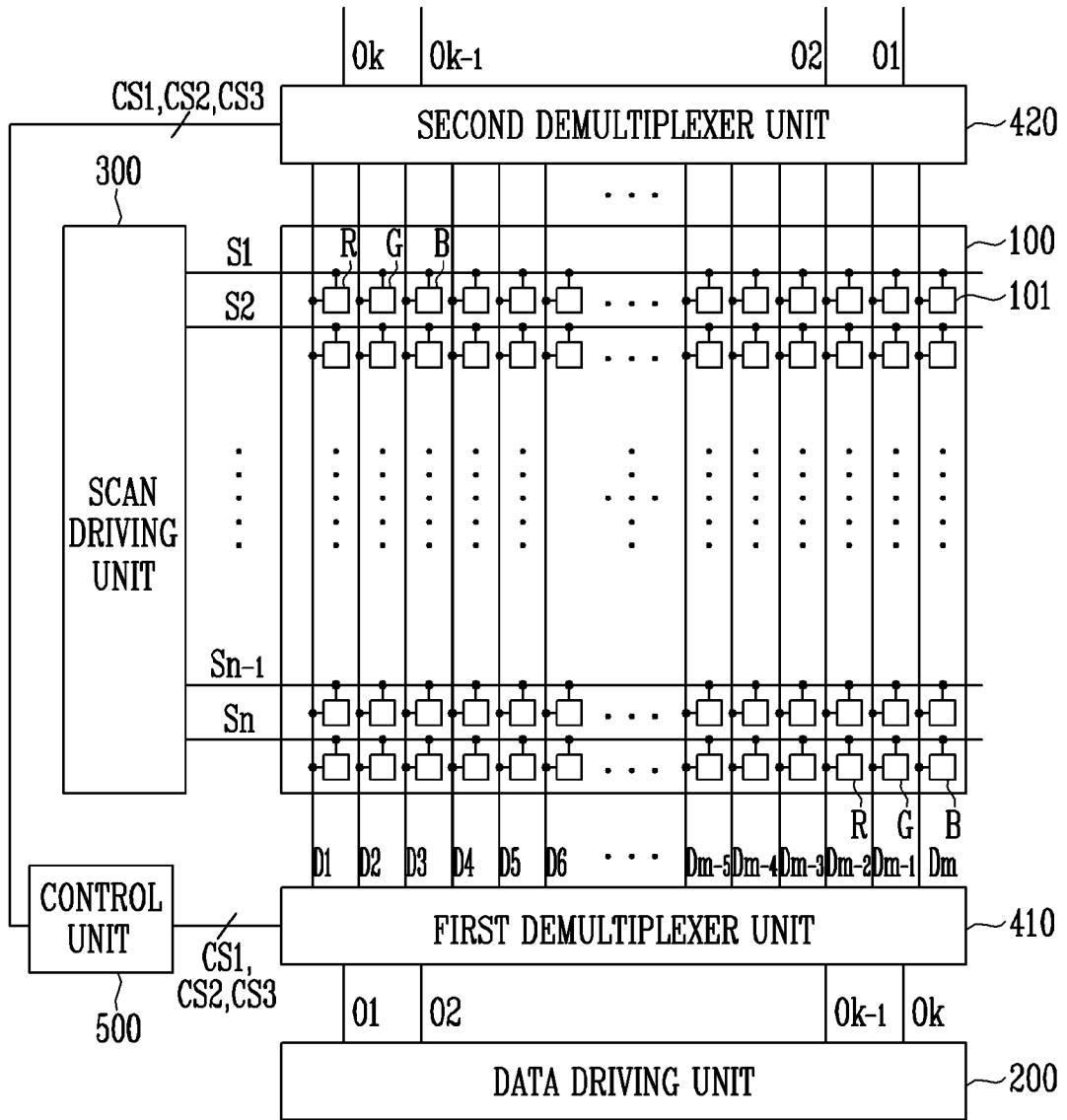


FIG. 2

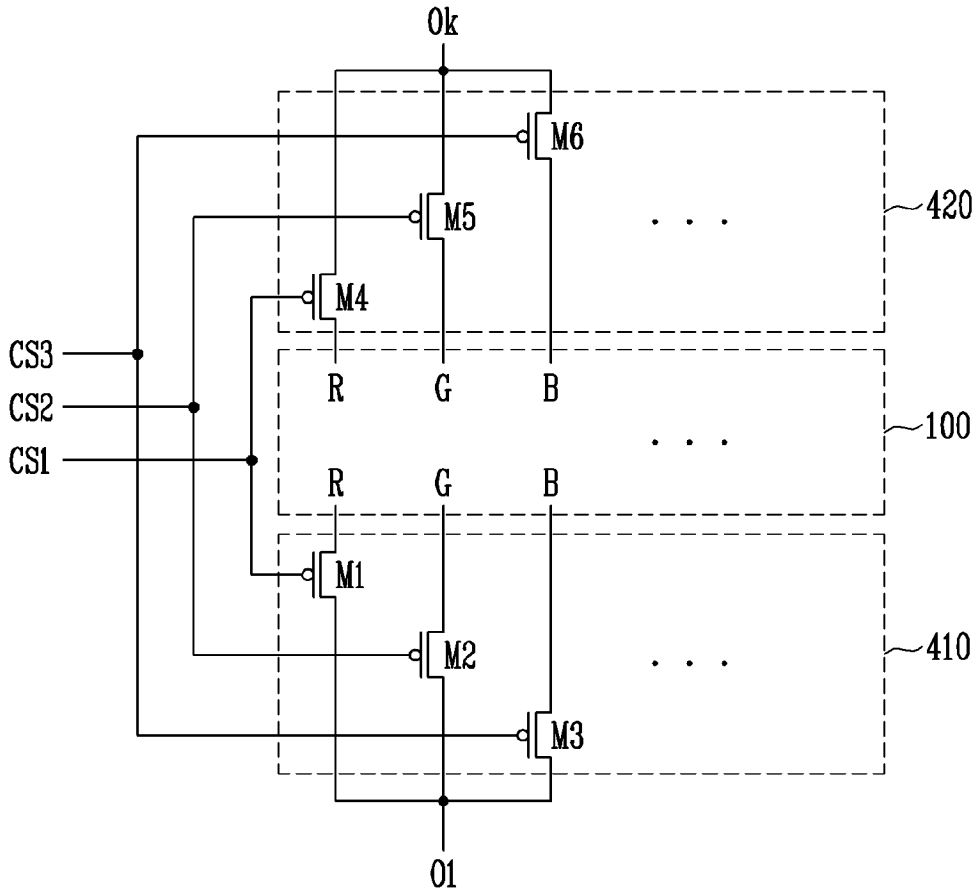


FIG. 3

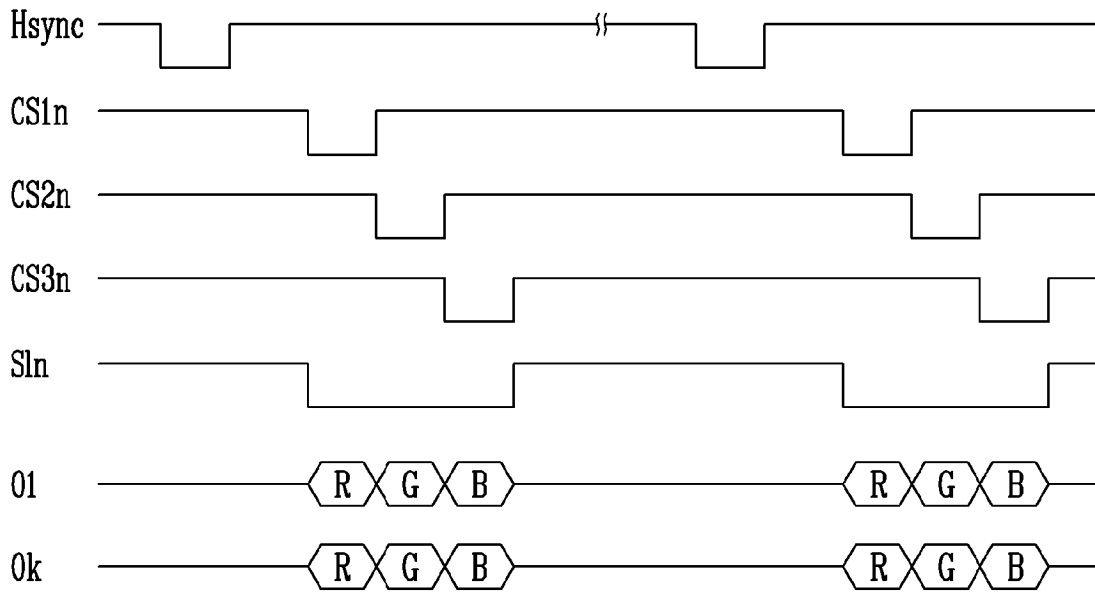


FIG. 4

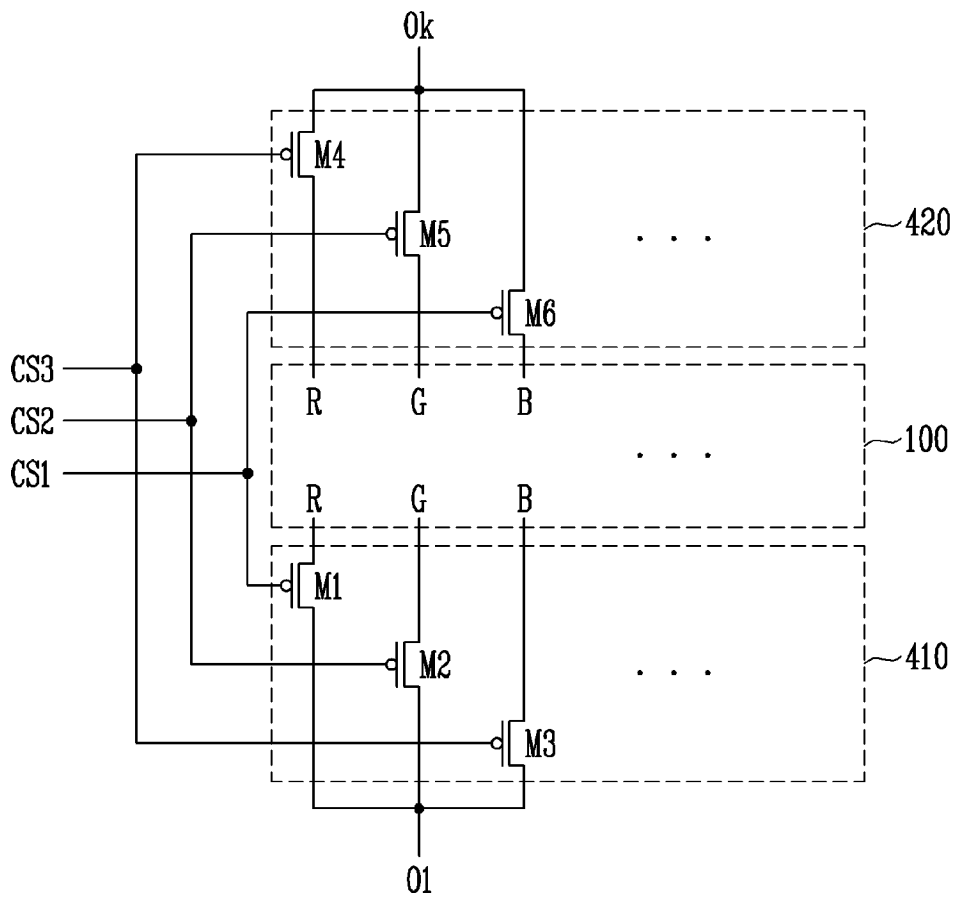
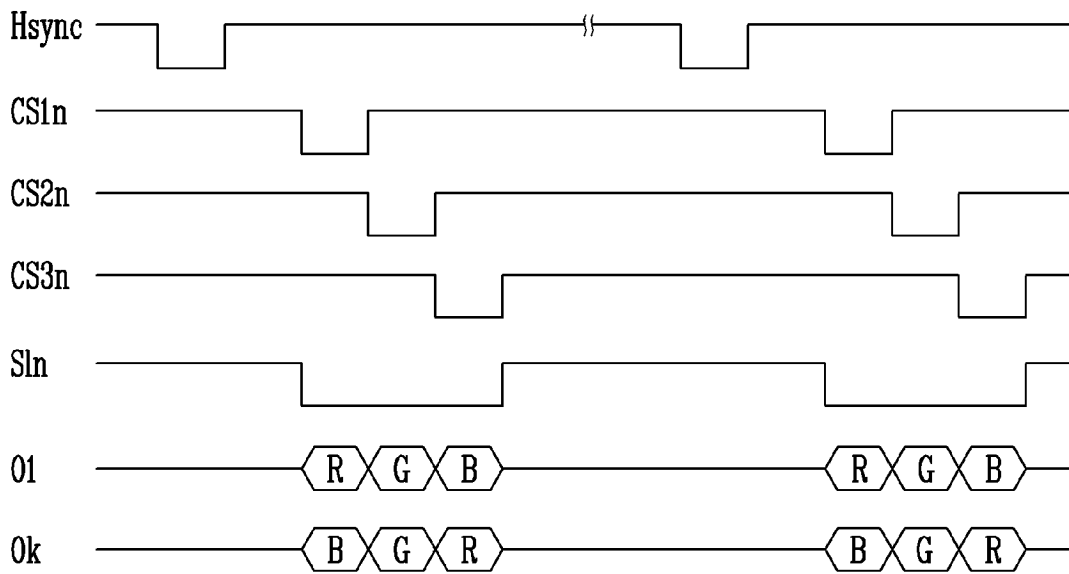


FIG. 5





EUROPEAN SEARCH REPORT

Application Number
EP 09 17 5396

DOCUMENTS CONSIDERED TO BE RELEVANT			
Category	Citation of document with indication, where appropriate, of relevant passages	Relevant to claim	CLASSIFICATION OF THE APPLICATION (IPC)
X	US 2006/071884 A1 (KIM YANG W [KR] KIM YANG WAN [KR]) 6 April 2006 (2006-04-06)	1,2,4-6,9	INV. G09G3/32
Y	* paragraphs [0033] - [0050], [0061]; figures 2-4,7,8 *	3	
Y	US 2008/150874 A1 (KIDA YOSHITOSHI [JP] ET AL) 26 June 2008 (2008-06-26) * paragraphs [0035] - [0041]; figures 4,5 *	3	
The present search report has been drawn up for all claims			TECHNICAL FIELDS SEARCHED (IPC)
			G09G
Place of search		Date of completion of the search	Examiner
Munich		7 January 2010	Harke, Michael
CATEGORY OF CITED DOCUMENTS		T : theory or principle underlying the invention E : earlier patent document, but published on, or after the filing date D : document cited in the application L : document cited for other reasons & : member of the same patent family, corresponding document	
X : particularly relevant if taken alone Y : particularly relevant if combined with another document of the same category A : technological background O : non-written disclosure P : intermediate document			

5

EPO FORM 1503 03.02 (P04C01)

ANNEX TO THE EUROPEAN SEARCH REPORT
ON EUROPEAN PATENT APPLICATION NO.

EP 09 17 5396

This annex lists the patent family members relating to the patent documents cited in the above-mentioned European search report. The members are as contained in the European Patent Office EDP file on
The European Patent Office is in no way liable for these particulars which are merely given for the purpose of information.

07-01-2010

Patent document cited in search report	Publication date	Patent family member(s)	Publication date
US 2006071884 A1	06-04-2006	KR 20060027023 A	27-03-2006

US 2008150874 A1	26-06-2008	CN 101044544 A	26-09-2007
		JP 4099671 B2	11-06-2008
		JP 2006058603 A	02-03-2006
		WO 2006018959 A1	23-02-2006
		KR 20070053222 A	23-05-2007
		TW 279768 B	21-04-2007

专利名称(译)	有机发光显示装置		
公开(公告)号	EP2184731A1	公开(公告)日	2010-05-12
申请号	EP2009175396	申请日	2009-11-09
[标]申请(专利权)人(译)	三星显示有限公司		
申请(专利权)人(译)	三星移动显示器有限公司.		
当前申请(专利权)人(译)	三星移动显示器有限公司.		
[标]发明人	LEE AN SU		
发明人	LEE, AN-SU		
IPC分类号	G09G3/32		
CPC分类号	G09G3/3275 G09G2300/0426 G09G2310/0297		
优先权	1020080110315 2008-11-07 KR		
其他公开文献	EP2184731B1		
外部链接	Espacenet		

摘要(译)

有机发光显示装置包括：显示单元（100），包括多条数据线（D1，... Dm），多条扫描线（S1，... Sn）和交叉区域的像素（101）；数据驱动器和扫描线的数据线，其中多条数据线排列成多个组；数据驱动器（200），用于向数据线提供数据信号；第一多路分解器（410），位于显示单元的第一侧，用于将组与数据驱动器的第一对应输出通道相关联，并根据控制信号将输出通道耦合到第一对应组中的数据线的（CS1n），CS2N，CS3N）；第二多路分配器（420），位于显示单元的与第一侧相对的第二侧，用于将组与数据驱动器的第二对应输出通道相关联，并用于将输出通道耦合到第二对应组中的数据线的。控制信号。

