

(19)
(12)

(KR)
(A)

(51) 。 Int. Cl. 7
G02F 1/136

(11)
(43)

2001 - 0103418
2001 11 23

(21) 10 - 2000 - 0024939
(22) 2000 05 10

(71) .
,
20

(72) 3 1407 - 77

(74)
:

(54)

가. :

. :

, ,

. :

.

(Active Matrix LCD : AM - LCD)가

가

1

(2, 4) (20) (10) (2, 4)

(20) 가 (4) (10)

(4) (8) (8) (12)

(12) (10) 가 (S) 가 (10) (2) 가

(S) (14)

(14) (P)

(4) (2) (10) (4)

(2) 가 (sealant : 6)

1

2

(2) (14) (14)

(24) (22)

(14) (14) 가

(S)가 (S) (26), (28) (

28, 30) (24) (26) (22) (28)

(30) (14) ()

(26) 가 가 (26) 가 가 (14) 가 ,

(14) 가 가

가 가

가 , 18 (

SXGA, UXGA)

가 /

1 (2) 2 (2)

(2) (14) (14)

(24) (22)

(25a, 23a) (22, 24) (14) (25a, 23a)가 (25b, 23b)

(S)가 (14) (S) (14) 가 (

28, 30) (S) 가 (55)

350 가

(30) (14) (30')

(21) (22) (21) (14)

(21) (C_{st})가 (14)

(26) 가 (S) (26) 가 (14) 가 ,

(14) 가

(S)가

, 가

3a 3d 2 - -

3a (1) 1 (26) (25a)

1 , , , .

3b 1 (26, 25a) (1) (60) (62) 2 (64a)

, (60) (SiN_x) , (SiO₂)

, (62) 2 (a - Si:H) (n⁺ a - Si:H) ,

, (64a) . 2 1

3c 2 2 (64b) . 2

/ (62) (64b) , / (64b) . 2

(62b) , (60)

3d / (64b) (28, 30)

, / (64b) (28, 30)

(25a) (60) (66) , / (6

4b) (28, 30)

, (28, 30)

(55) (CH)

3e (14) (25b)

(14) (30) , (25b) (

25a) (66) (25a)

, (14) (25b) , - - (ITO)가

(14) 4

4 (26) (28, 30) , (26)

(CH) (L) (W) , (CH)

(W) (80)

, (80) L W + 2 W

/ (80) (CH) 3a 3e , (CH)

(64b) (28, 30)

(28, 30)

가 ; 1

가 ; 2 ;

가 ; ; ;

7 (4, 5c) . (80)

7

(200) 1, 2 / (202a, 202b ; , 1, 2 GDS)
(220, 230) (200)

(W) (220, 230) (L), (220, 230)
4 (210) (210)

(W) GDS (202a, 202b) (200) 1, 2 GDS (202a, 202b) ,
가 (L) (H) 가 (220, 230)

1, 2 GDS (202a, 202b) , (80)
(26) (4) .

1, 2 GDS (202a, 202b) (210) (200)
(4) (210) (200)
(28, 30) (80)

8 7 - (200) 1, 2 GDS
(202a, 202b) 가 .

(1) (200) , (200) (1) 1, 2 GDS
(202a, 202b) .

, (200) (60) , 1, 2 GDS (202a, 202b)
 (200)
 , (64b) , 1, 2 GDS (202a, 202b)
 (64b)
 (200)
 9 7 2 GDS (202b) (T) , (220) 가
 (Z) (200) 2 GDS (202b) ()
 , 2 GDS (202b) H (L)
 , (200) (210) (200)
 , (220, 230) (200)
 , , 9 , 가 6
 , GDS ,
 , 가

(57)

1.

;

;

;

;

;

;

1, 2

가

;

1, 2

1, 2

2.

1 ,

1, 2

가

3.

1 ,

1, 2

가

1, 2

1, 2

,

4.

,

,

,

,

가

,

;

1

가

;

;

;

2

;

2

,

;

,

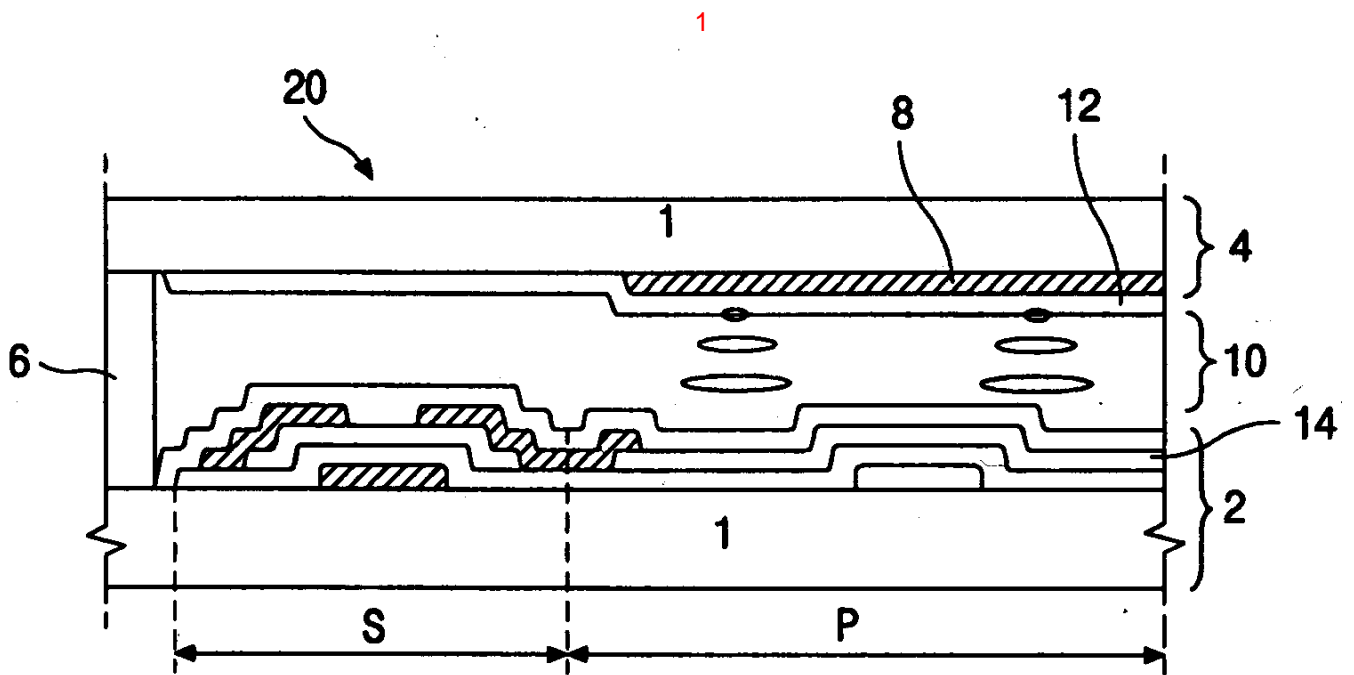
가

;

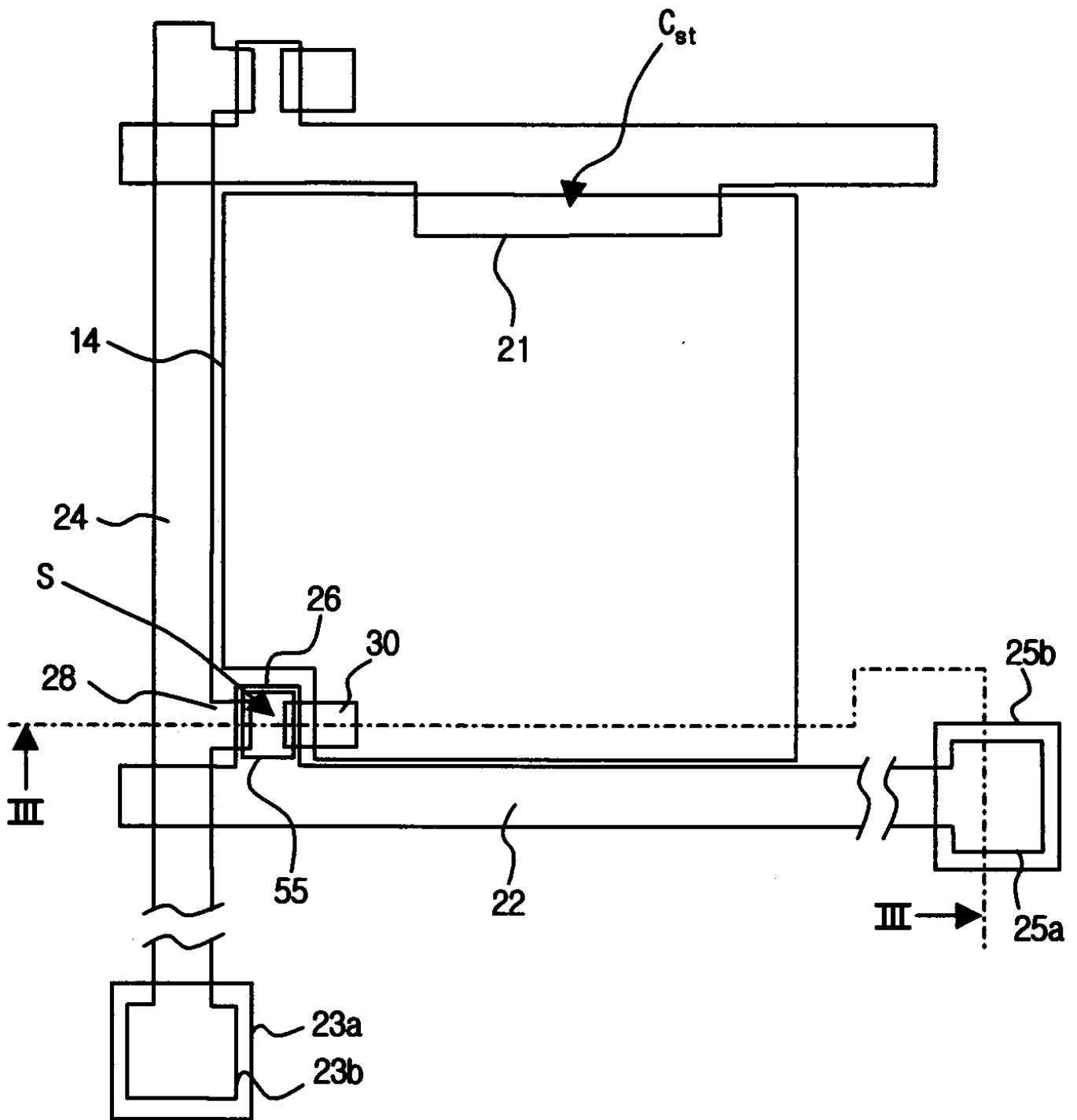
;

;

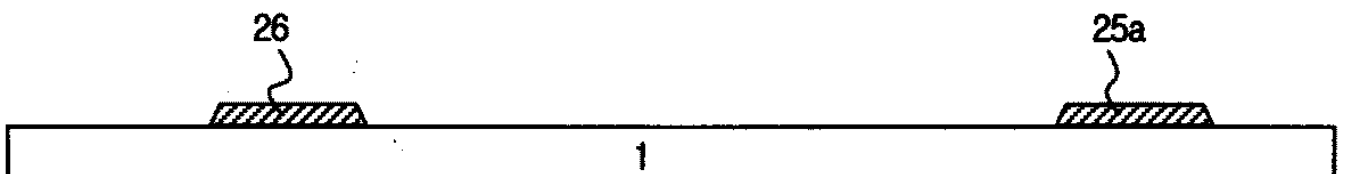
;



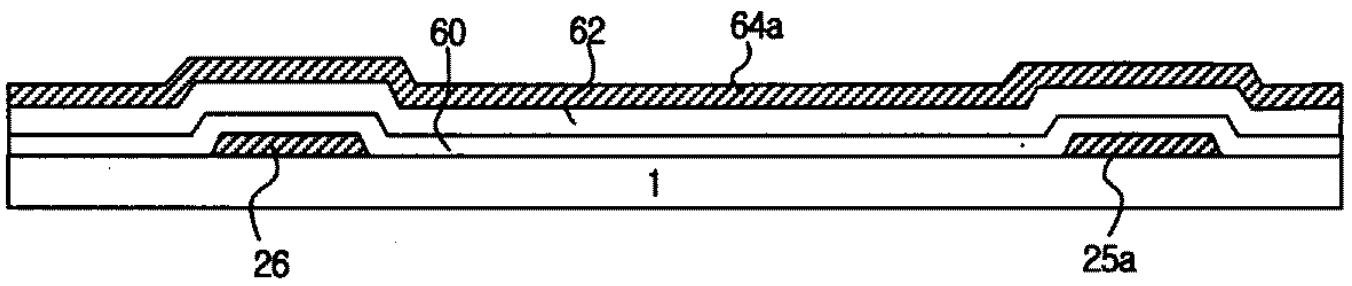
2



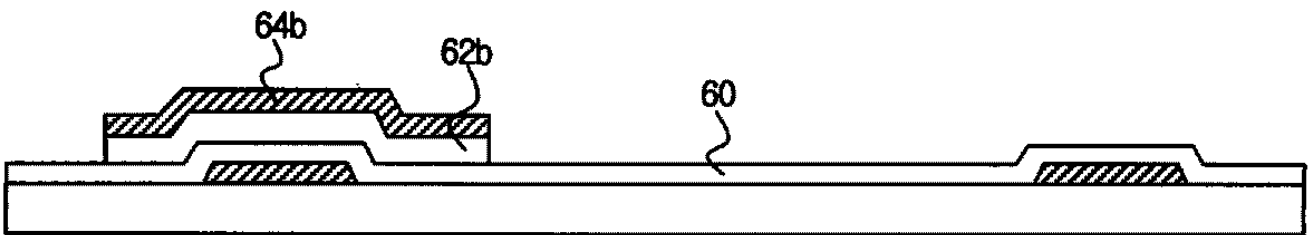
3a



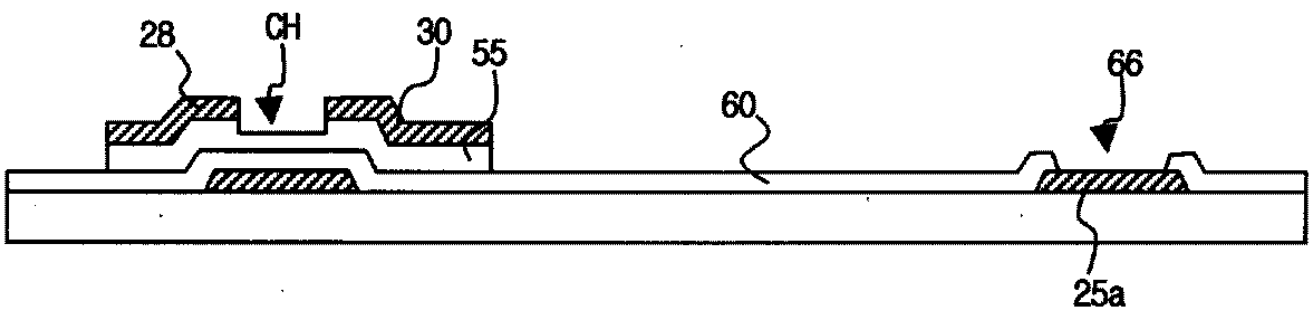
3b



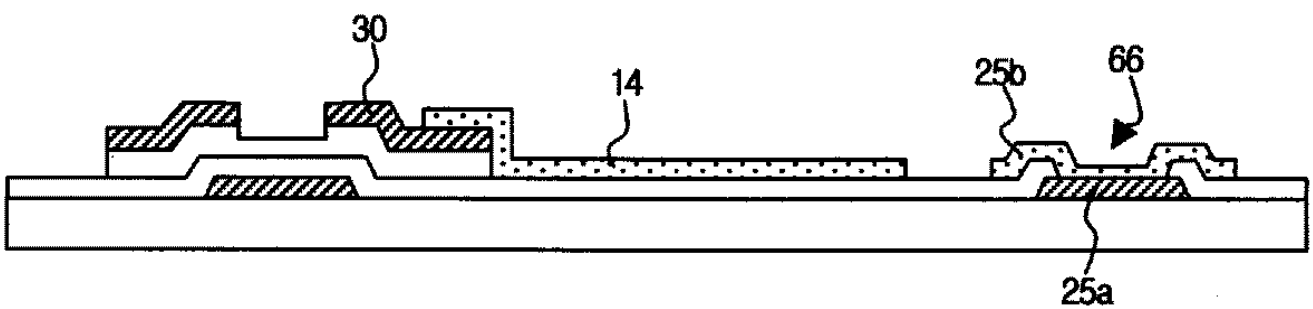
3c



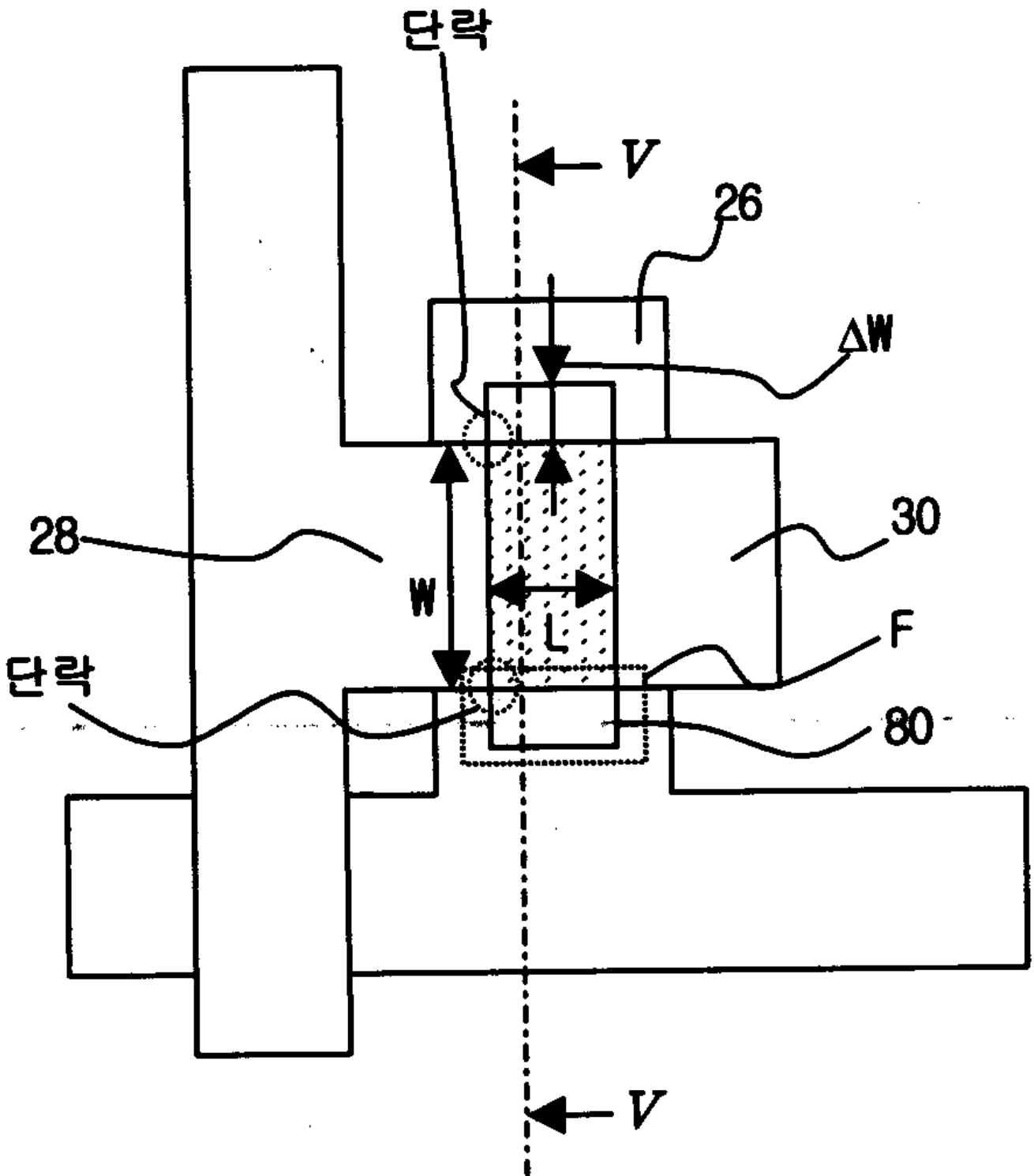
3d



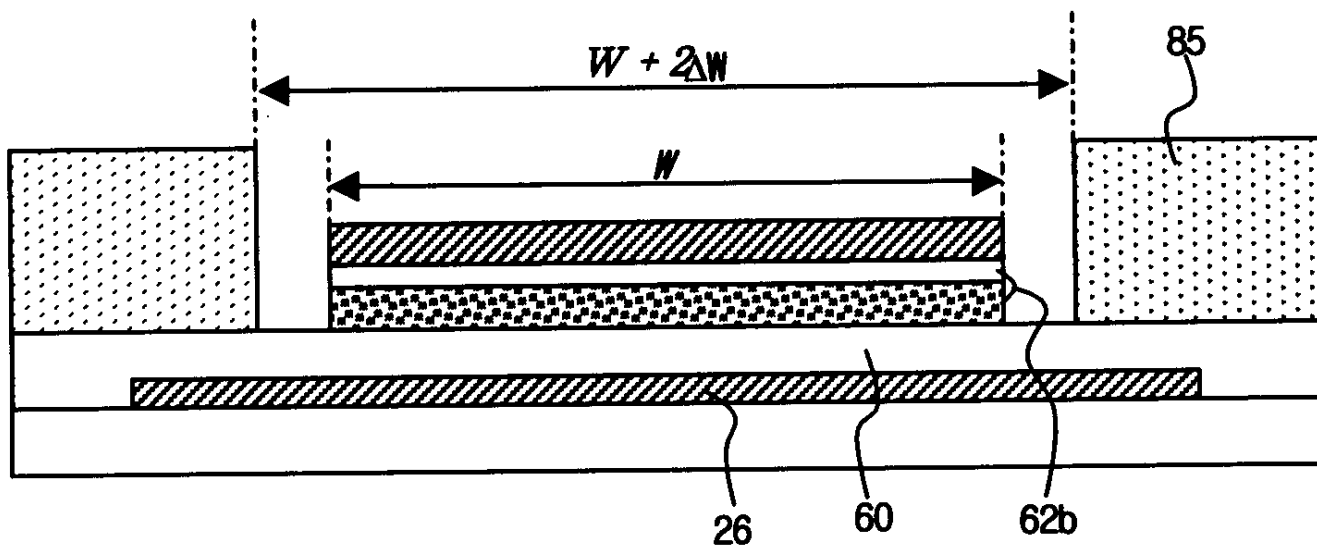
3e



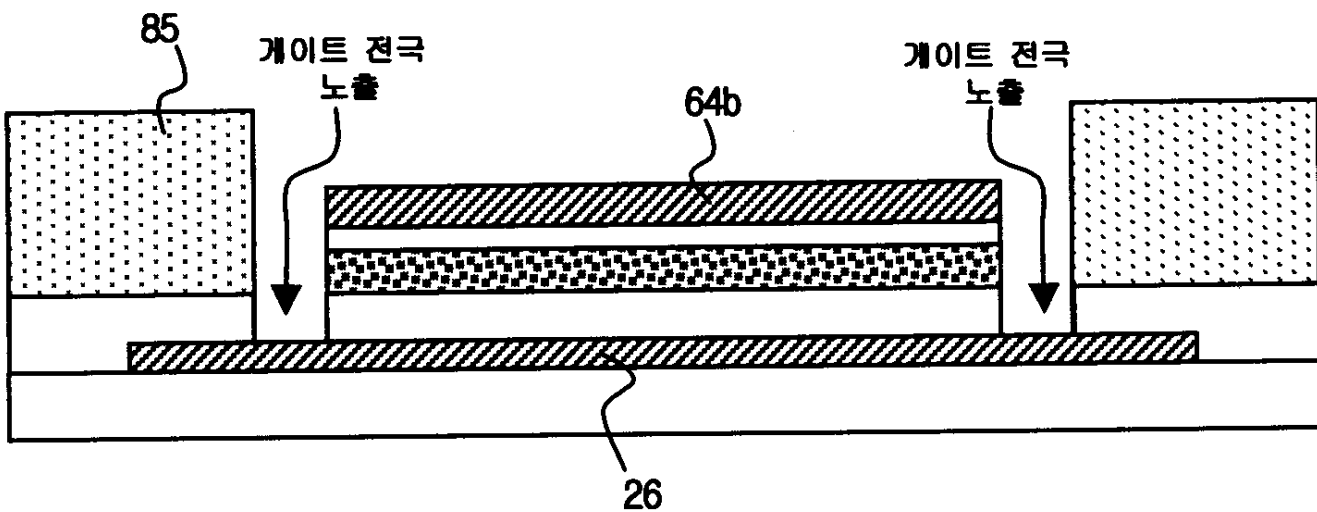
4



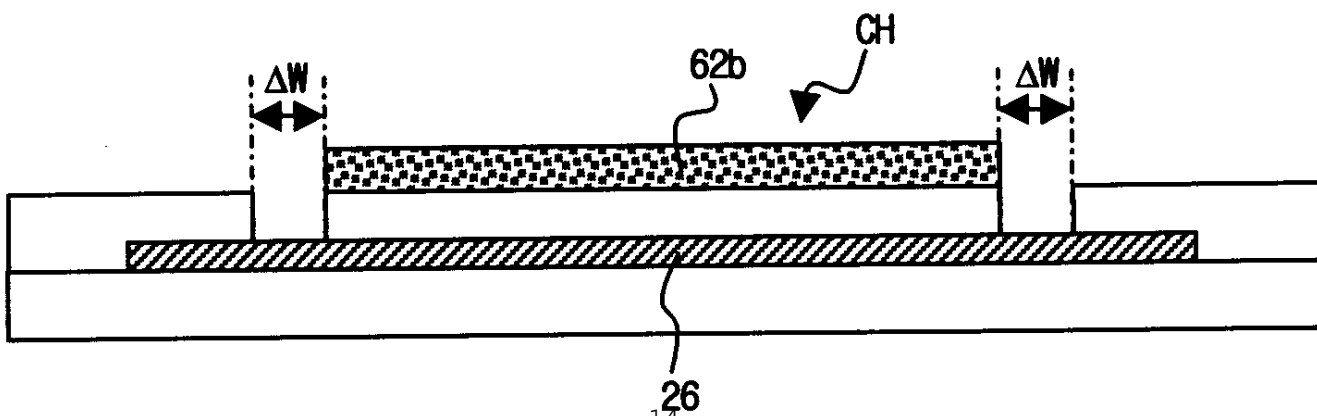
5a



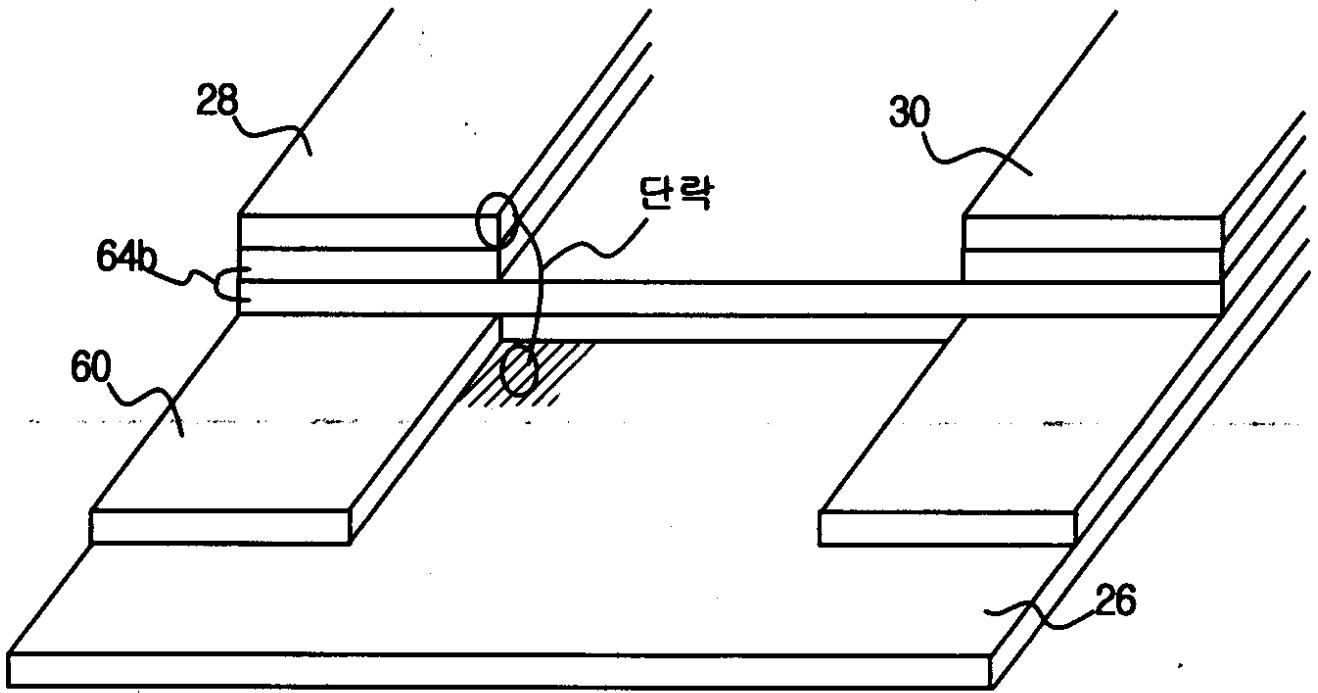
5b



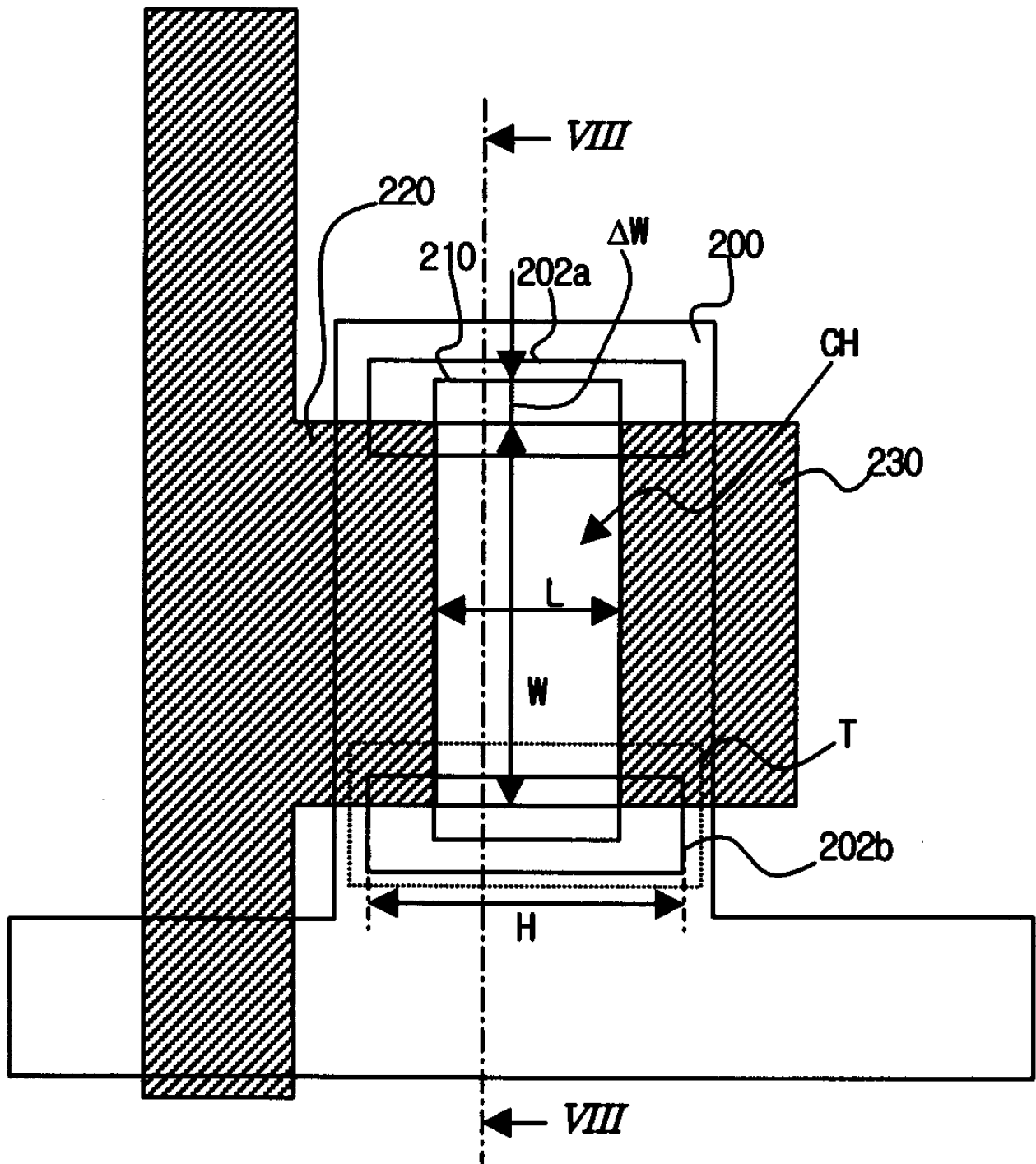
5c



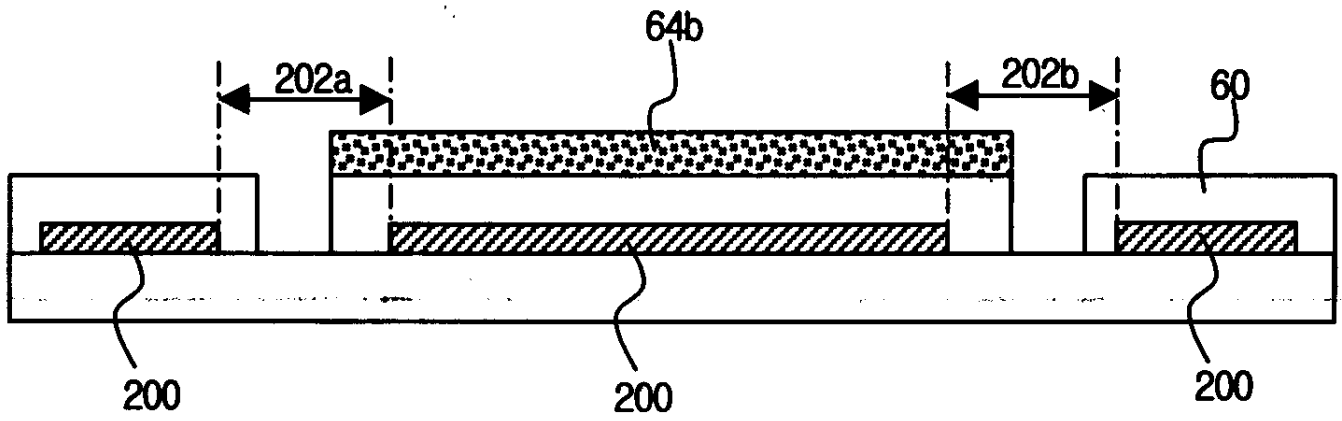
6



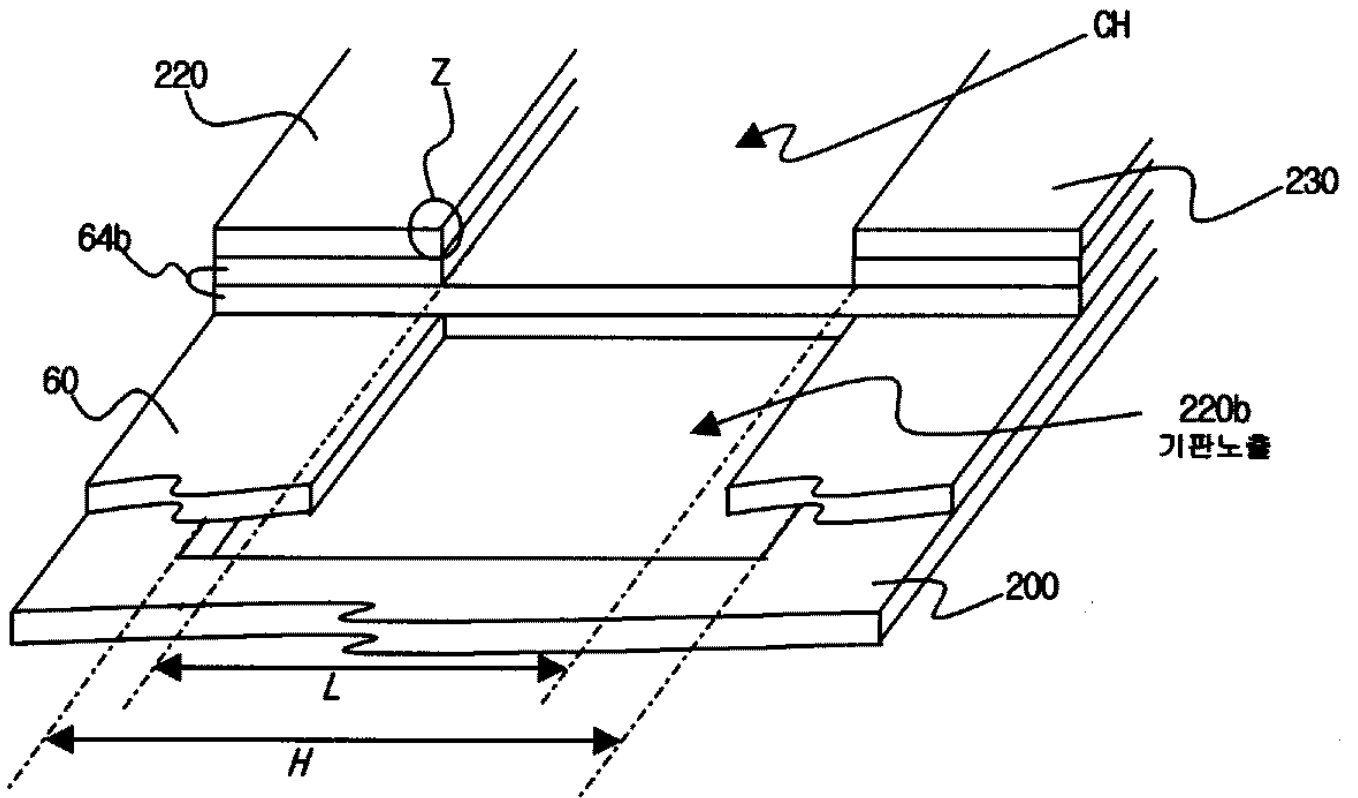
7



8



9



专利名称(译)	用于液晶显示装置的薄膜晶体管及其制造方法		
公开(公告)号	KR1020010103418A	公开(公告)日	2001-11-23
申请号	KR1020000024939	申请日	2000-05-10
[标]申请(专利权)人(译)	乐金显示有限公司		
申请(专利权)人(译)	LG显示器有限公司		
当前申请(专利权)人(译)	LG显示器有限公司		
[标]发明人	LEE JAE GU		
发明人	LEE, JAE GU		
IPC分类号	G02F1/136		
代理人(译)	贞媛KI		
外部链接	Espacenet		

摘要(译)

null为null。液晶显示装置用薄膜晶体管技术领域本发明涉及液晶显示装置用薄膜晶体管。 B.发明内容本发明要解决的问题当在液晶显示装置中制造下部薄膜晶体管阵列基板时，当同时形成源电极和漏电极以及沟道以减少制造工艺时，可能发生，这导致液晶显示装置中的致命线缺陷。的。本发明的解决方案的要点：在本发明中，在栅电极和源电极与漏电极之间可能发生短路的部分处的栅电极中形成短路孔，从而阻止源电极和漏电极与栅电极之间可能发生的短路故障。 9

