

(19)
(12)

(KR)
(A)

(51) 。 Int. Cl.⁷
G02F 1/1343

(11)
(43)

10-2004-0061201
2004 07 07

(21)

10-2002-0087004

(22)

2002 12 30

(71)

.

20

(72)

5 54-35

221

106-304

(74)

:

(54)

1

2

,

4

1

2

3

4 1

5 4

6 4 5 ' - "

7 2 .

8 7 .

9 7 8 ' - ' , ' - ' .

10 1 2 .

< >

2,14,24,44,54 : 6,16,26,36,46,56,66 :

8,18,28,38,48,58,68 : 10,20,30,40,50,60 :

22,32,52,62 : 72 :

74 : 76 :

78 :

가

가

1

1 , (DL) (Thin Film Transistor ; 'TFT')(T) , TF

T(T) (2)

(2) TFT(T) (8,10) (DL1, DL2, ...) (2) 가

. TFT(T) (6) 가 1 (GL1, GL2, ...) (DL1, DL2,...) . TFT(T) (GL1, GL2, ...) (2) ((2)) 가

Vgh) (2) (2) (

(DL1 DLm) (DL1 DLm) ,

(Integrated Circuit : 'IC')가

2 3 m(m) m/2

2
Lk+1) i , (DLi) 1 2 1 k(k 3 TFT(T1 T3) , 1 3 TFT(T1
(SL) (14,24) , 1 2 (14,24) .

1 TFT(T1) k (GLk) (16) , i (DLi)
(18) , 2 TFT(T2) (28) (20) .

2 TFT(T2) k+1 (GLk+1) (26) , 1 TFT(T1) (20)
(28) , 1 (22) 1 (14) (30) .

3 TFT(T3) k (GLk) (36) , i (DLi)
(38) , 2 (32) 2 (24) (40) .

1 2 (14,24) i (DLi) k k+1 (GLk,GLk+1)
 .

(SC) k k+1 (GLk,GLk+1)
(14,24) 1 2 (14,24) (GL)
가 (SL) .

3 k(k 3 TFT(T1 T3) , 1 3 TFT(T1
k,GLk+1) i (DLi) 1 2 (14,24) , 1 2 (14,24) (GL
T1 T3) (SC) .

1 TFT(T1) k (GLk) (16) , k+1 (GLk+1) 4
(22d) (18) , 2 TFT(T2) (26) 1 (22a)

2 TFT(T2) 1 TFT(T1) (18) (26) , i (DLi)
(28) , 2 (22b) 1 (14) (30) .

3 TFT(T3) k (GLk) (36) , i (DLi)
(38) , 3 (22c) 2 (24) (40) .

1 2 (14,24) i (DLi) k k+1 (GLk,GLk+1)
 .

(SC) k k+1 (GLk,GLk+1)
(14,24) .

IC 2 3 (DLi)
1 2 (14,24) , 1 (14)
1 2 TFT(T1,T2)가 2 (24) .

3 TFT(T3)가 1 (14) , 1 2 (14,24) (14,24)
(DLi) 1 2 (DLi)

1 2 (14,24) . ,

, 1 2 (14,24) 1
(14) 2 (24) 가

. 1 (14)

1 2
1 2

1 2

1 2 1 2 1 가
1 1 k(k) , k+1 1 2 1
1 1

2 2 k 3

1 2 1 2 가

1 k(k) , k+1 1 1
2 1

2 2 k 3

1 2 가

1 2

4 10

4 1

4 Lk, GLk+1) i 1 (DLi) k(k) k+1 (G
T(T1 T3) (SL) 1 2 3 TFT(T1 T3) , 1 3 TF
(44,54) , 1 2 (44,54)
(SC)

$1 \text{ TFT}(T1) \quad k \quad (\text{GLk}) \quad (46) \quad , \quad i \quad (\text{DLi})$
 $(48) \quad , \quad 2 \text{ TFT}(T2) \quad (58) \quad (50) \quad .$

$2 \text{ TFT}(T2) \quad k+1 \quad (\text{GLk}+1) \quad (56) \quad , \quad 1 \text{ TFT}(T1) \quad (50)$
 $(58) \quad , \quad 1 \quad (52) \quad 1 \quad (44) \quad (60) \quad .$

$3 \text{ TFT}(T3) \quad k \quad (\text{GLk}) \quad (66) \quad , \quad i \quad (\text{DLi})$
 $(68) \quad , \quad 2 \quad (62) \quad 2 \quad (54) \quad (70) \quad .$

$1 \quad 3 \text{ TFT}(T1 \quad T3) \quad 6 \quad (46,56,66)$
 $(48,58,68) \quad (50,60,70) \quad (74,76)$
 $1 \quad 3 \text{ TFT}(T1 \quad T3) \quad k \quad k+1 \quad (\text{GLk, GLk}+1)$
 $i \quad (\text{DLi}) \quad (44,54) \quad .$

$(44,54) \quad i \quad (\text{DLi}) \quad k \quad k+1 \quad (\text{GLk, GLk}+1)$
 $(78) \quad , \quad (78) \quad 1 \quad 2 \quad (44,54) \quad 1 \quad 3 \text{ TFT}(T1 \quad T3) \quad (51) \quad (60,70)$
 $(51) \quad (52,62) \quad (60,70)$
 $(44,54) \quad .$

$(\text{SC}) \quad k \quad k+1 \quad (\text{GLk, GLk}+1)$
 $(44,54) \quad (\text{GL}) \quad 1 \quad 2 \quad (44,54) \quad (\text{SL})$

$90) \quad 1 \quad (\text{DLi}) \quad (90) \text{가} \quad (90) \text{가}$
 $4 \quad (90) \quad (\text{DLi}) \quad 5 \quad U \quad (44,54)$
 $, \quad 2 \quad (54) \quad , \quad 1 \quad (44) \quad 1 \quad 2 \quad (\text{DLi}) \quad (90) \quad (92)$
 $(90) \quad 2 \quad (54) \quad (44) \quad (94) \quad (90) \quad (90)$
 $(90) \quad 2 \quad (\text{DLi}) \quad 1 \quad 2 \quad (44,54)$

$1 \quad k \quad 10 \quad (\text{GLk}) \quad 2 \quad k+1 \quad (\text{GLk}+1) \quad 1 \quad (\text{SP1})$
 $\text{SP2)가} \quad (\text{SP1}) \quad \text{가} \quad , \quad 1 \quad (\text{TA}) \quad 2 \quad (\text{SP2}) \quad 1 \quad (\text{TA1}) \quad 1 \quad 2 \quad (\text{SP1}) \quad 2 \quad (\text{SP2})$
 $k+1 \quad (\text{SP2)가} \quad \text{가} \quad 1 \quad (\text{GLk}+1) \quad 1 \quad (\text{SP1)가} \quad \text{가} \quad , \quad k \quad (\text{GLk}) \quad 2 \quad (44)$
 $(\text{SP2)가} \quad \text{가} \quad 1 \quad (\text{TA1}) \quad 1 \quad 2 \text{ TFT}(T1, T2) \text{가} \quad 1 \quad 1 \quad 2$

$1 \quad k \quad (\text{GLk}) \quad 2 \quad (\text{SP2}) \quad 1 \text{ TFT}(T1) \quad (\text{GLk}+1)$
 $1 \quad 2 \text{ TFT}(T2) \quad (58) \quad , \quad k+1 \quad 2 \text{ TFT}(T2) \quad (58) \quad 1$
 $(\text{DA}) \quad (\text{SP1}) \quad 2 \text{ TFT}(T2) \text{가} \quad (60) \quad 1 \quad (44) \quad 1 \quad k$
 $(\text{GLk}) \quad 2 \quad (\text{SP2)가} \quad k+1 \quad (\text{GLk}+1) \quad 1 \quad (\text{SP1)가}$
 $1 \quad (\text{DA})$

$, \quad k \quad (\text{GLk}) \quad 2 \quad (\text{SP2}) \quad 2 \quad (\text{TA2}) \quad 3 \text{ TFT}(T3) \text{가}$
 $3 \text{ TFT}(T3) \text{가} \quad 2 \quad (\text{TA2}) \quad (\text{DLi}) \quad 2 \quad (\text{DB}) \quad 2$
 (54)

$7 \quad 2$

$\begin{matrix} 1 \\ (SP1) \end{matrix}$ 가 $\begin{matrix} (DA) \\ k \end{matrix}$, $\begin{matrix} 1 \\ (GLk) \end{matrix}$ $\begin{matrix} (44) \\ (GLk) \end{matrix}$ $\begin{matrix} 2 \\ (44) \end{matrix}$ $\begin{matrix} 1 \\ (44) \end{matrix}$ $\begin{matrix} , \\ (DA) \end{matrix}$ $\begin{matrix} k+1 \\ (SP2) \end{matrix}$ 가 $\begin{matrix} (GLk+1) \\ (TA1) \end{matrix}$ $\begin{matrix} 1 \\ k \end{matrix}$
 $\begin{matrix} 2 \\ (TB) \end{matrix}$ $\begin{matrix} (TB) \end{matrix}$ $\begin{matrix} k \\ (DLi) \end{matrix}$ $\begin{matrix} (GLk) \end{matrix}$ $\begin{matrix} 3 \\ (DB) \end{matrix}$ TFT(T3)가 $\begin{matrix} 3 \\ (54) \end{matrix}$ TFT(T3)가

$\begin{matrix} 2 \\ \end{matrix}$, $\begin{matrix} / \end{matrix}$ $\begin{matrix} 1 \\ \end{matrix}$ $\begin{matrix} 2 \\ \end{matrix}$ $\begin{matrix} 1 \\ \end{matrix}$
 가

(57)

1.

$\begin{matrix} 1 \\ 2 \end{matrix}$

2.

$\begin{matrix} 1 \\ \end{matrix}$, $\begin{matrix} 1 \\ 2 \end{matrix}$

3.

$\begin{matrix} 2 \\ \end{matrix}$, $\begin{matrix} 1 \\ 2 \end{matrix}$

4.

$\begin{matrix} 3 \\ \end{matrix}$, $\begin{matrix} 1 \\ 2 \end{matrix}$, $\begin{matrix} 1 \\ 2 \end{matrix}$ 가

5.

$\begin{matrix} 4 \\ \end{matrix}$, $\begin{matrix} 1 \\ k(k) \end{matrix}$, $\begin{matrix} 1 \\ \end{matrix}$

$k+1$ 1 , 2 1 , .

6.
5 ,
2
k 3 , 2 .

7.
5 ,
1 2 , 1 2 1 2
가 가 .

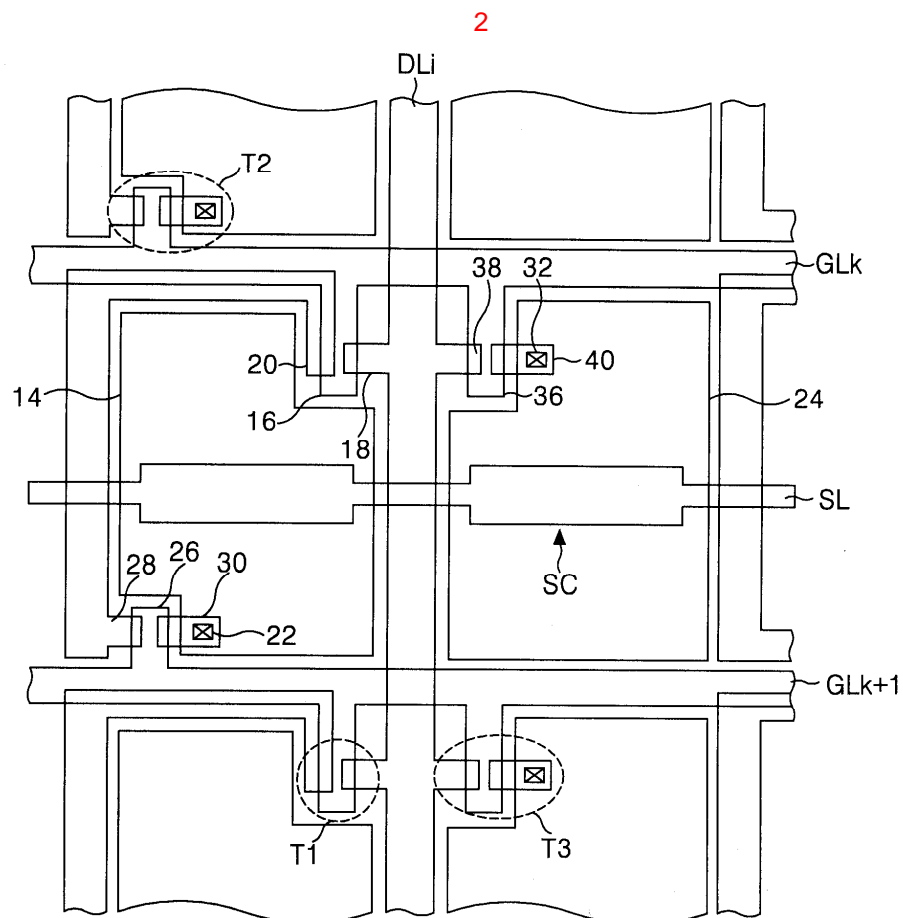
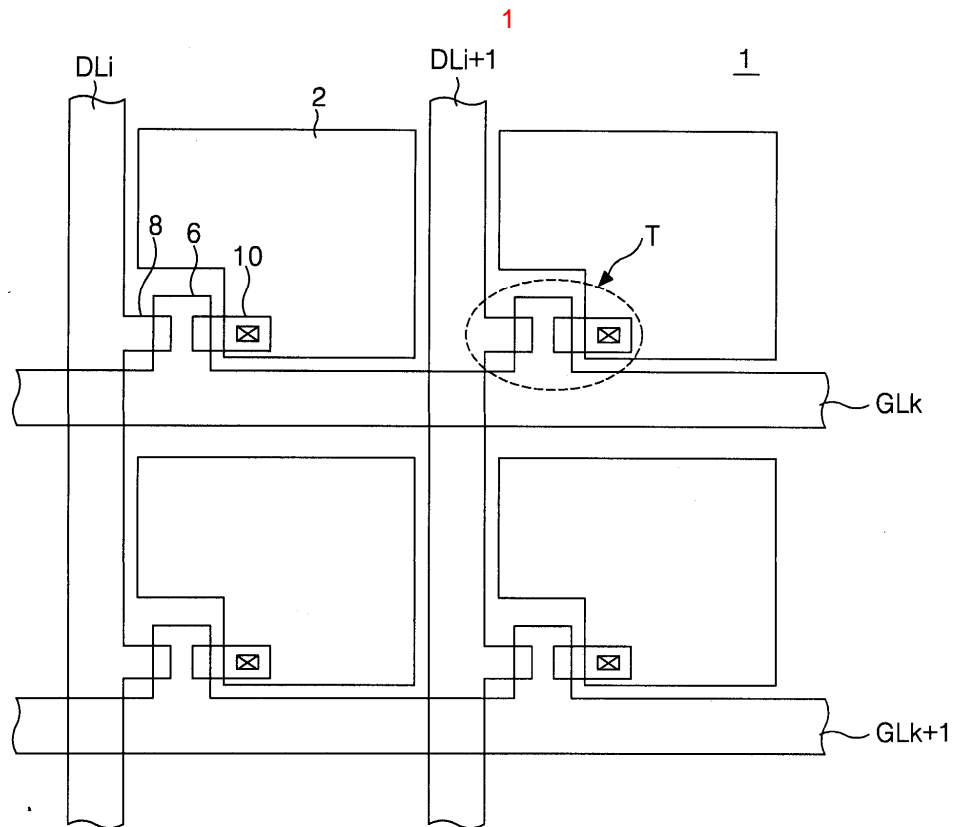
8.
4 ,
1
k(k) , 1 k+1 ,
1 1 2 , .

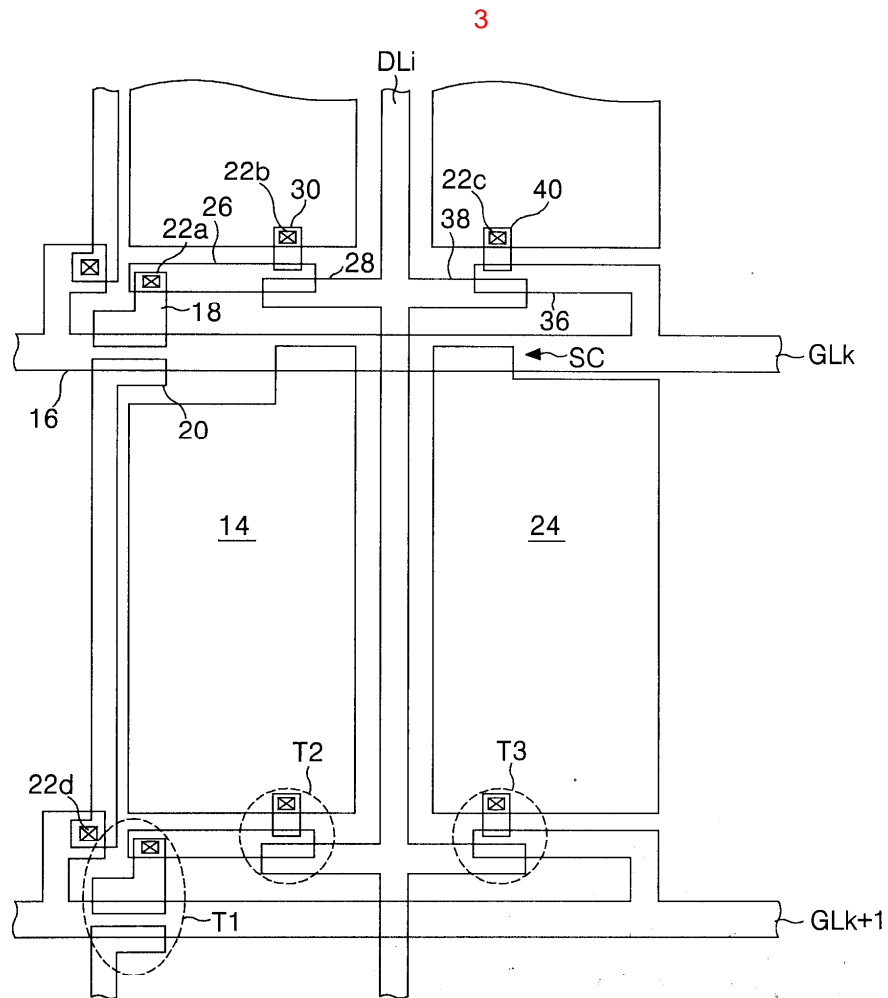
9.
8 ,
2
k 3 , 2 .

10.
9 ,
1 2 가 .

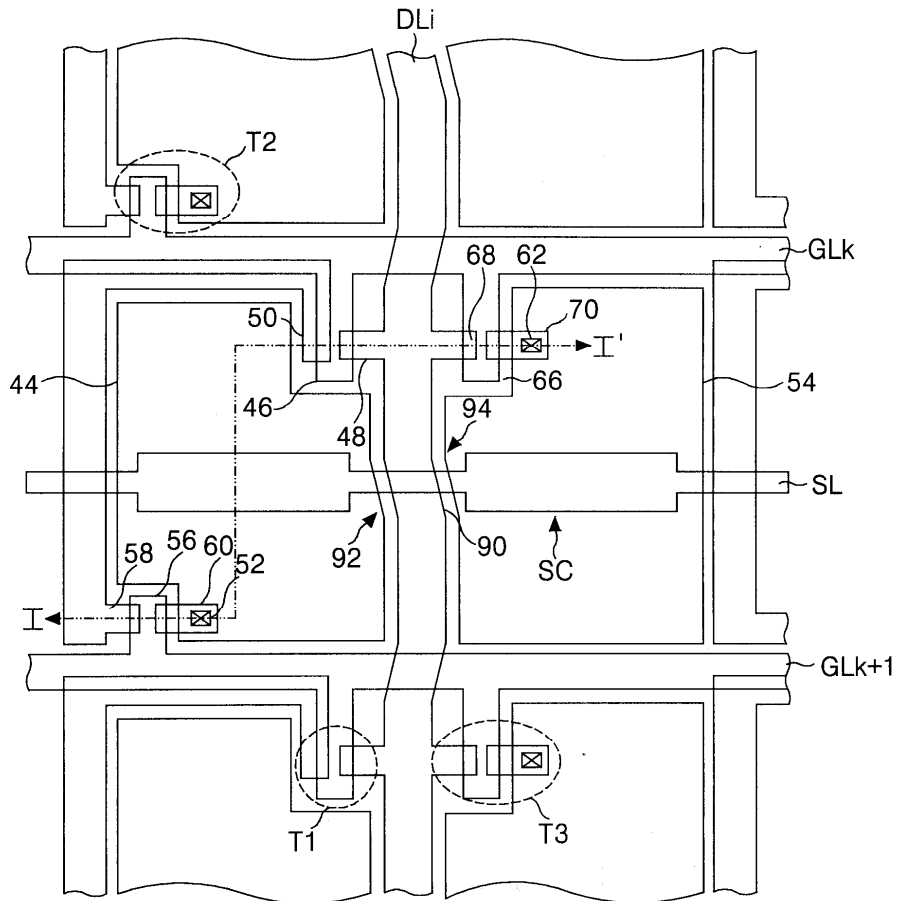
11.
4 , .

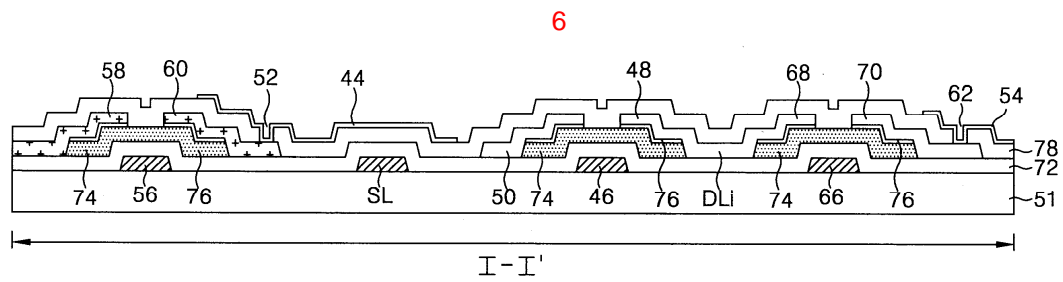
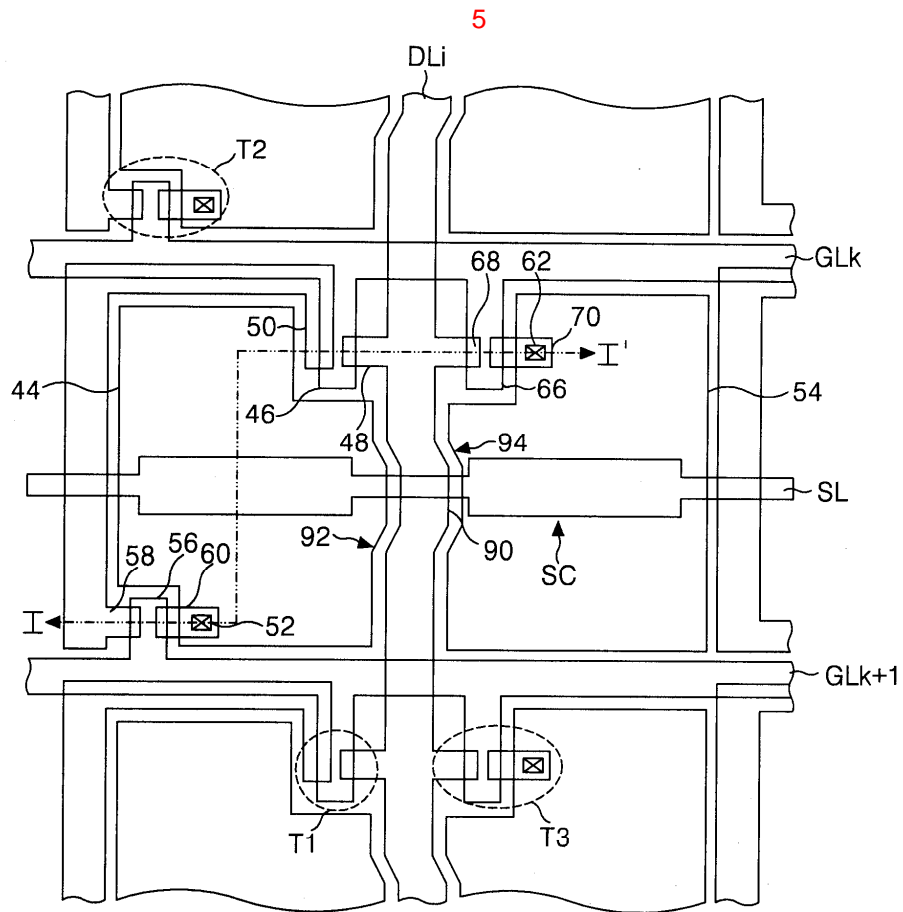
12.
11 ,
1 , 2 .



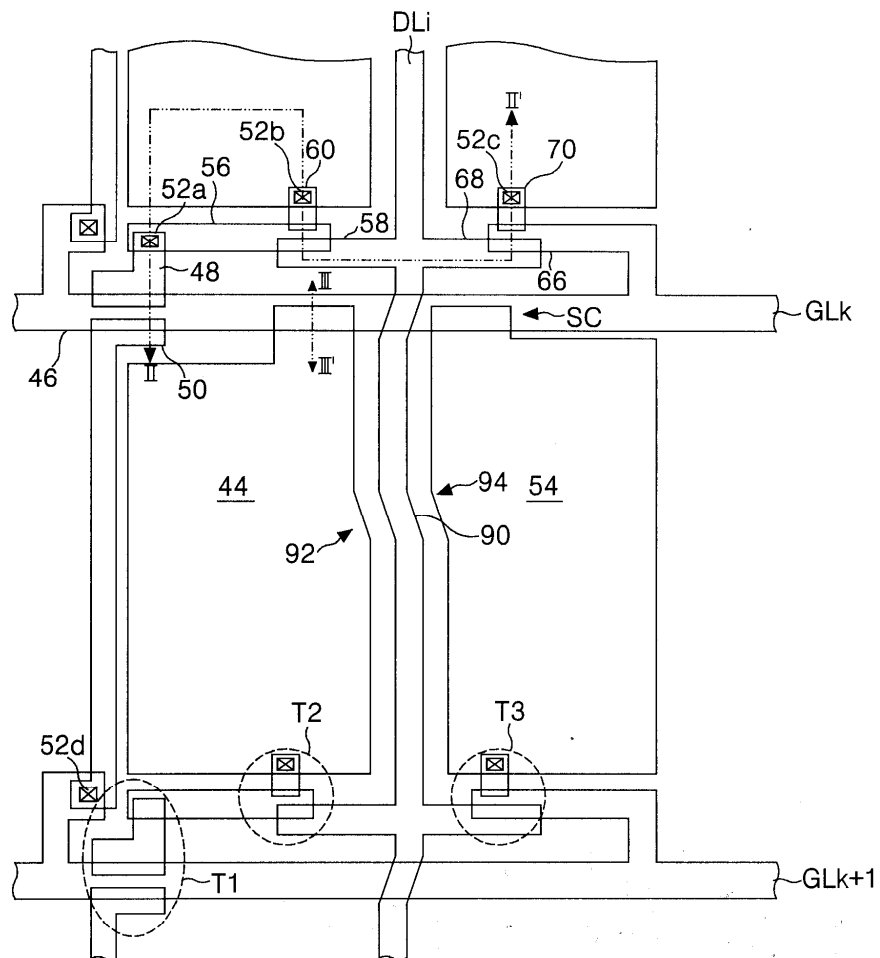


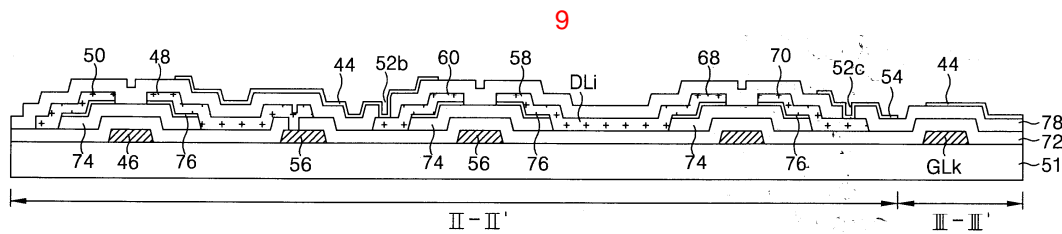
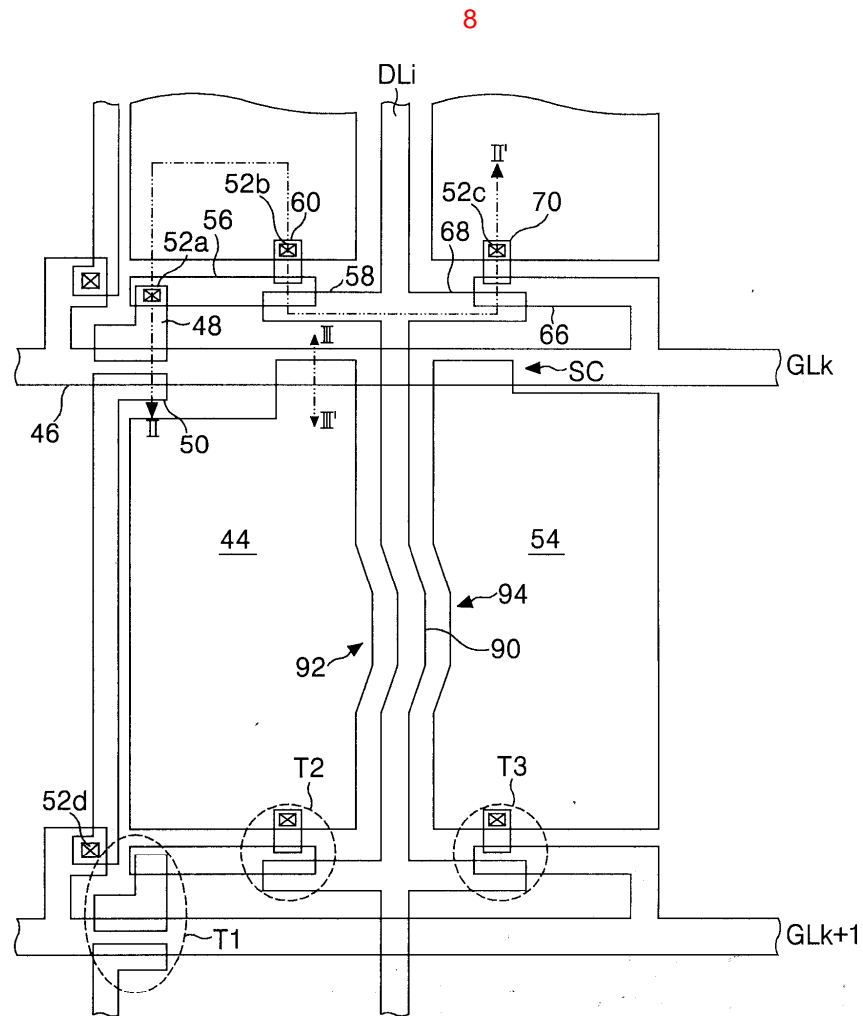
4

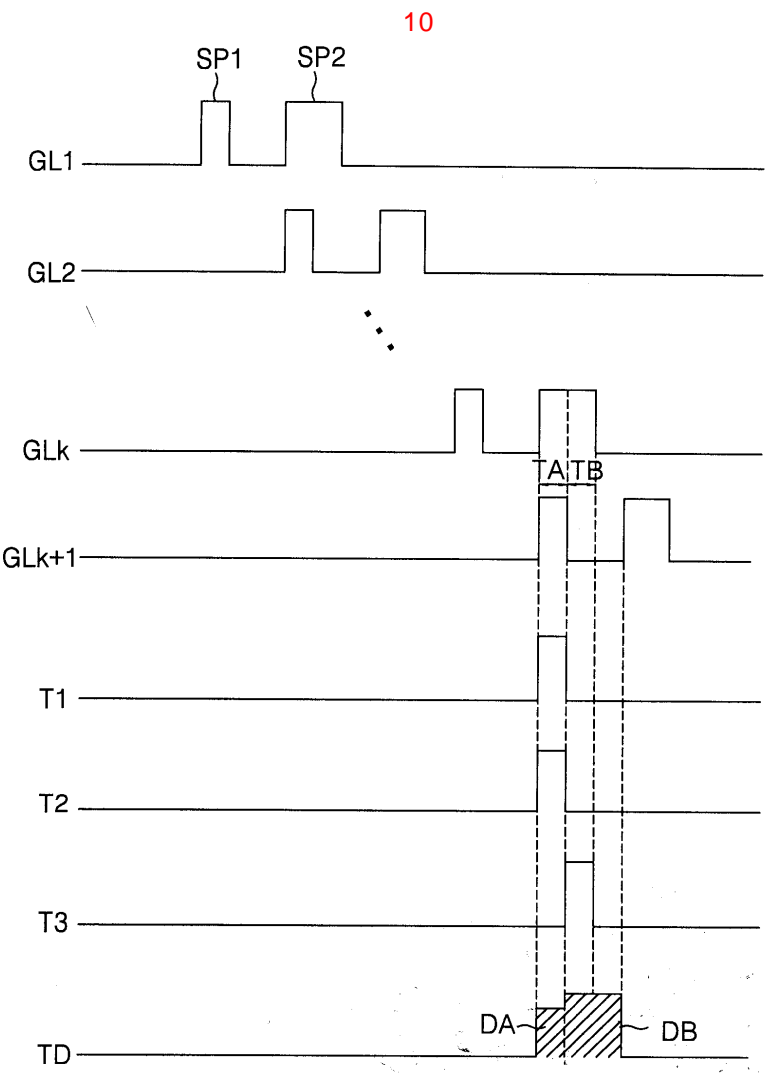




7







专利名称(译)	液晶显示面板		
公开(公告)号	KR1020040061201A	公开(公告)日	2004-07-07
申请号	KR1020020087004	申请日	2002-12-30
[标]申请(专利权)人(译)	乐金显示有限公司		
申请(专利权)人(译)	LG显示器有限公司		
当前申请(专利权)人(译)	LG显示器有限公司		
[标]发明人	PARK KWANGSOON 박광순 SHIN SEUNGCHAN 신승찬		
发明人	박광순 신승찬		
IPC分类号	G02F1/1343		
代理人(译)	金勇 年轻的小公园		
外部链接	Espacenet		

摘要(译)

液晶显示面板技术领域本发明涉及一种液晶显示面板，其能够在不降低孔径比的情况下均衡左右相邻的不对称像素电极的开口率。根据本发明的液晶显示板的特征在于它具有弯曲的信号线和第一和第二像素电极，它们与信号线相邻形成并沿信号线弯曲以补偿不同的开口区域的。4

