



US007528893B2

(12) **United States Patent**  
**Schultz et al.**

(10) **Patent No.:** **US 7,528,893 B2**  
(45) **Date of Patent:** **May 5, 2009**

(54) **BACKLIGHT FOR LIQUID CRYSTAL DISPLAY**

2006/0013273 A1 1/2006 Menon  
2006/0132673 A1 6/2006 Ito  
2007/0008406 A1 1/2007 Shestak et al.

(75) Inventors: **John C. Schultz**, Afton, MN (US);  
**Robert L. Brott**, Woodbury, MN (US);  
**Michael J. Sykora**, Deer Park, WI (US)

FOREIGN PATENT DOCUMENTS

JP 2001/273910 10/2001  
KR 10-2000-0001751 1/2000  
KR 10-2007-0023210 2/2007

(73) Assignee: **3M Innovative Properties Company**,  
Saint Paul, MN (US)

OTHER PUBLICATIONS

(\*) Notice: Subject to any disclaimer, the term of this patent is extended or adjusted under 35 U.S.C. 154(b) by 166 days.

“Dual Direction Backlight for Stereoscopic LCD”, Sasagawa, T., et al., p. 1-3, Society for Information Display, 2003 (Digest) (SID03).

\* cited by examiner

(21) Appl. No.: **11/750,412**

*Primary Examiner*—David Nelms

(22) Filed: **May 18, 2007**

*Assistant Examiner*—Phu Vu

(74) *Attorney, Agent, or Firm*—Lance L. Vietzke

(65) **Prior Publication Data**

(57) **ABSTRACT**

US 2008/0284945 A1 Nov. 20, 2008

(51) **Int. Cl.**  
**G02F 1/1335** (2006.01)

(52) **U.S. Cl.** ..... **349/12**

(58) **Field of Classification Search** ..... 349/15  
See application file for complete search history.

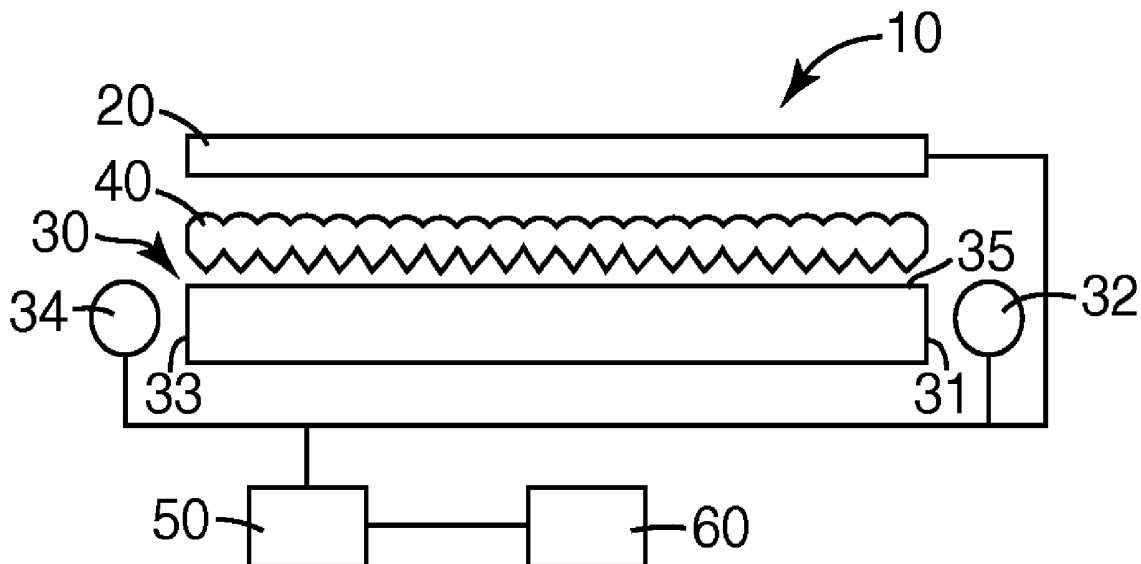
A backlight includes a lightguide having a light emission surface, a first light input surface, a second light input surface opposing the first light input surface, and a lightguide thickness. A plurality of antireflection features are on or in the first light input surface and second light input surface. Each antireflection feature has a base length value and a height value that are less than the light guide thickness. A right eye image solid state light source is positioned to provide light into the first light input surface and a left eye image solid state light source is positioned to provide light into the second light input surface.

(56) **References Cited**

U.S. PATENT DOCUMENTS

6,128,059 A \* 10/2000 Nishiguchi ..... 349/129  
2005/0052750 A1 3/2005 King  
2005/0276071 A1 12/2005 Sasagawa

**22 Claims, 2 Drawing Sheets**



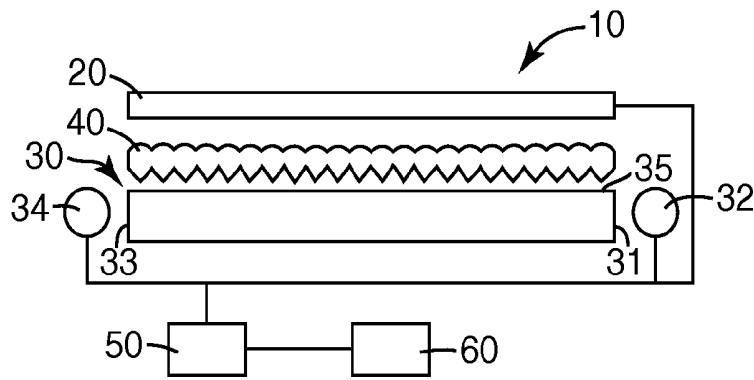


Fig. 1

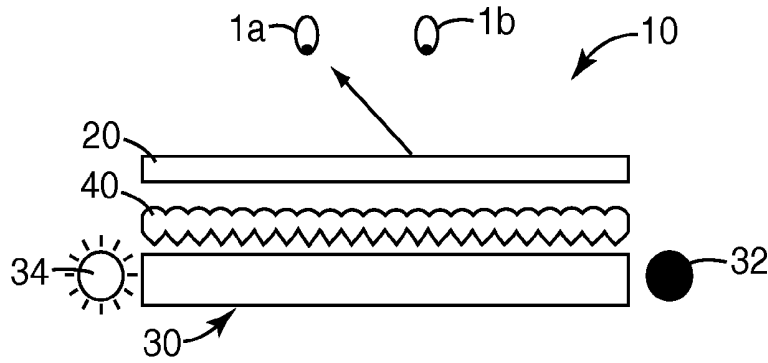


Fig. 2A

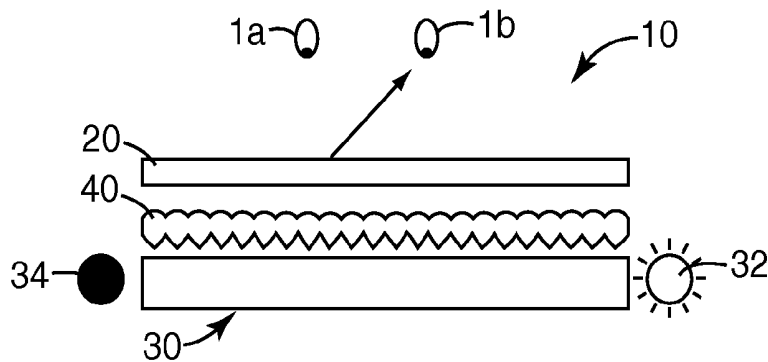


Fig. 2B

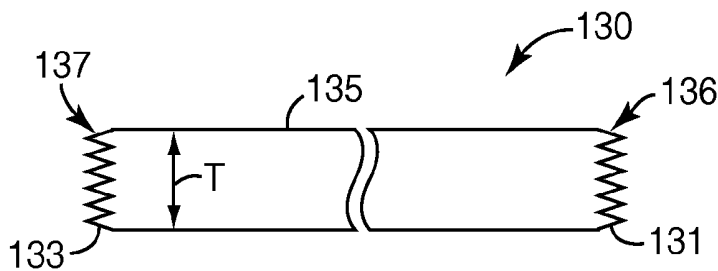


Fig. 3

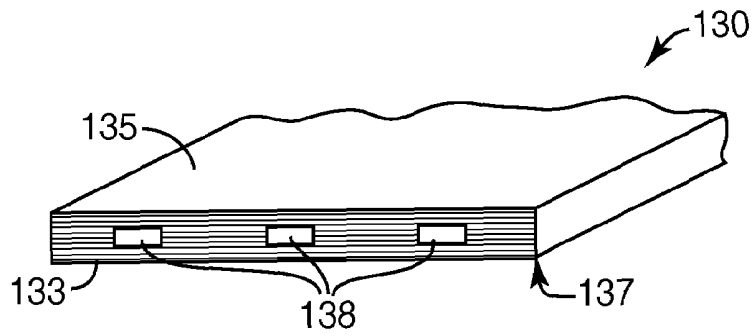


Fig. 4A

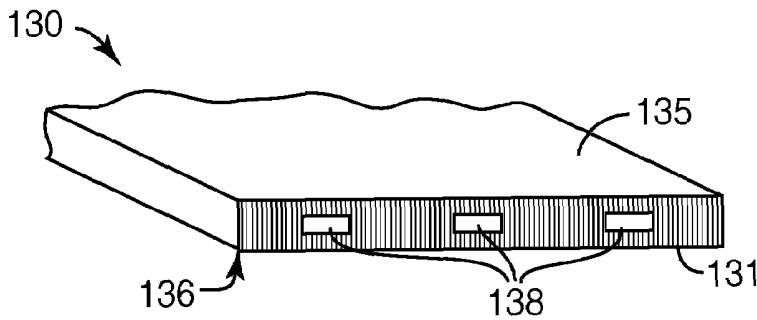


Fig. 4B

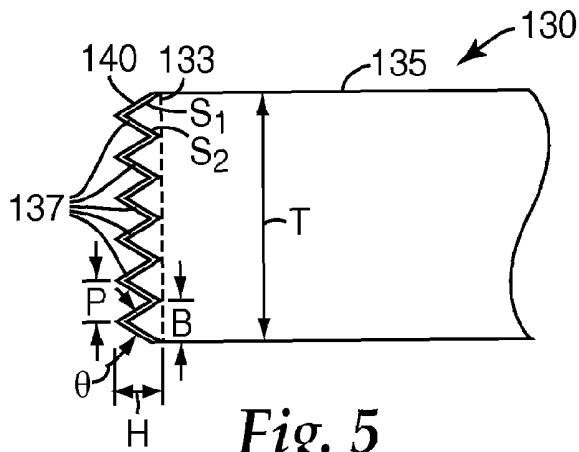


Fig. 5

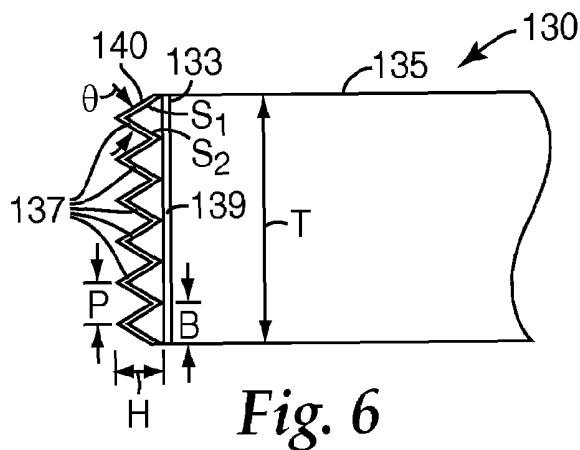


Fig. 6

1

**BACKLIGHT FOR LIQUID CRYSTAL  
DISPLAY**

## FIELD

The present disclosure relates to a backlit liquid crystal display and particularly to a backlight for a liquid crystal display that reduces visual cross-talk between displayed left eye and right eye images.

## BACKGROUND

A stereoscopic display usually presents an observer with images with parallax from individual right and left eye viewpoints. There are two methods of providing the two eyes of the observer with the parallax images. In one method, the observer utilizes a pair of shutter or 3D glasses which transmit or block light from the viewer's eyes in synchronization with alternating the left/right image display. Similarly, in another method, right eye and left eye viewpoints are alternatively displayed and led to the respective eyes of the observer but without the use of 3D glasses. This second method is referred to as autostereoscopic and is desired for stereo 3D viewing because separate glasses are not needed.

A liquid crystal display (LCD) is a sample and hold display device such that the image at any point or pixel of the display is stable until that pixel is updated at the next image refresh time, typically  $\frac{1}{60}$  of a second or faster. In such a sample and hold system, displaying different images, specifically displaying alternating left and right images for an autostereoscopic display, requires careful timing sequencing of the light sources so that, for example, the left eye image light source is not on during the display of data for the right eye and vice versa.

Ensuring that the right and left light sources are on or off in synchronization with the image display is important to achieve a high quality autostereoscopic image. Further, if the left and right sources provide alternating illumination of a directional backlight structure which extracts light based on the light source end when the right eye image light input surface opposes a left eye image light input surface, light entering either surface can subsequently reflect off the opposing surface and create visual confusion between the left eye image and right eye image or equivalently cross-talk between left eye and right eye images resulting in poor 3D image quality.

## BRIEF SUMMARY

The present disclosure relates to a backlit liquid crystal display apparatus and particularly to a backlight for a liquid crystal display that reduces visual cross-talk between displayed left eye and right eye images.

In a first embodiment, a backlight includes a lightguide having a light emission surface, a first light input surface, a second light input surface opposing the first light input surface, and a lightguide thickness. A plurality of antireflection features are on or in the first light input surface and second light input surface. Each antireflection feature has a base length value and a height value that are less than the light guide thickness. A right eye image solid state light source is positioned to provide light into the first light input surface and a left eye image solid state light source is positioned to provide light into the second light input surface.

In another embodiment, a backlight includes a lightguide having a light emission surface, a first light input surface, a second light input surface opposing the first light input sur-

2

face, and a lightguide thickness. A plurality of antireflection features are on or in the first light input surface and second light input surface. Each antireflection feature has at least two surfaces including an antireflection layer or light absorption layer. A right eye image solid state light source is positioned to provide light into the first light input surface and a left eye image solid state light source is positioned to provide light into the second light input surface.

In a further embodiment, a display apparatus includes a liquid crystal display panel and a backlight positioned to provide light to the liquid crystal display panel. The backlight includes a lightguide having a light emission surface, a first light input surface, a second light input surface opposing the first light input surface, and a lightguide thickness. A plurality of antireflection features are on or in the first light input surface and second light input surface. Each antireflection feature has a base length value and a height value that are less than the light guide thickness. A right eye image solid state light source is positioned to provide light into the first light input surface, and a left eye image solid state light source is positioned to provide light into the second light input surface.

In another embodiment, a display apparatus includes a liquid crystal display panel and a backlight positioned to provide light to the liquid crystal display panel. The backlight includes a lightguide having a light emission surface, a first light input surface, a second light input surface opposing the first light input surface, and a lightguide thickness. A plurality of antireflection features are on or in the first light input surface and second light input surface. Each antireflection feature has a base length value and a height value that are less than the light guide thickness. A right eye image solid state light source is positioned to provide light into the first light input surface, and a left eye image solid state light source is positioned to provide light into the second light input surface.

## BRIEF DESCRIPTION OF THE DRAWINGS

The invention may be more completely understood in consideration of the following detailed description of various embodiments of the invention in connection with the accompanying drawings, in which:

FIG. 1 is a schematic side view of an illustrative display apparatus;

FIG. 2A and FIG. 2B are schematic side views of an illustrative autostereoscopic display apparatus in operation;

FIG. 3 is a schematic cross-sectional view of an illustrative autostereoscopic backlight;

FIG. 4A and FIG. 4B are schematic perspective views of illustrative backlight light input surfaces;

FIG. 5 is a schematic cross-sectional view of an illustrative backlight light input surface; and

FIG. 6 is a schematic cross-sectional view of another illustrative backlight light input surface.

The figures are not necessarily to scale. Like numbers used in the figures refer to like components. However, it will be understood that the use of a number to refer to a component in a given figure is not intended to limit the component in another figure labeled with the same number.

## DETAILED DESCRIPTION

In the following description, reference is made to the accompanying drawings that form a part hereof, and in which are shown by way of illustration several specific embodiments. It is to be understood that other embodiments are contemplated and may be made without departing from the

scope or spirit of the present invention. The following detailed description, therefore, is not to be taken in a limiting sense.

All scientific and technical terms used herein have meanings commonly used in the art unless otherwise specified. The definitions provided herein are to facilitate understanding of certain terms used frequently herein and are not meant to limit the scope of the present disclosure.

Unless otherwise indicated, all numbers expressing feature sizes, amounts, and physical properties used in the specification and claims are to be understood as being modified in all instances by the term "about." Accordingly, unless indicated to the contrary, the numerical parameters set forth in the foregoing specification and attached claims are approximations that can vary depending upon the desired properties sought to be obtained by those skilled in the art utilizing the teachings disclosed herein.

The recitation of numerical ranges by endpoints includes all numbers subsumed within that range (e.g. 1 to 5 includes 1, 1.5, 2, 2.75, 3, 3.80, 4, and 5) and any range within that range.

As used in this specification and the appended claims, the singular forms "a", "an", and "the" encompass embodiments having plural referents, unless the content clearly dictates otherwise. As used in this specification and the appended claims, the term "or" is generally employed in its sense including "and/or" unless the content clearly dictates otherwise.

The term "autostereoscopic" refers to displaying three-dimensional images that can be viewed without the use of special headgear or glasses on the part of the user or viewer. These methods produce depth perception in the viewer even though the image is produced by a flat device.

The present disclosure relates to a backlit liquid crystal display apparatus and particularly to an autostereoscopic backlight for a liquid crystal display that reduces visual crosstalk between displayed left eye and right eye images. Backlights described herein include a plurality of antireflection features on opposing light input surface that force reflected light to undergo multiple bounces before possibly returning toward its light input surface. These features include a light absorbing material and/or an antireflection material. These features can be integral with the backlight or applied as a film, post-fabrication molded features or deposited features such as by an ink-jet process to each light input surface of the backlight. The features can be regular or irregular and have an aspect ratio of greater than one. While the present invention is not so limited, an appreciation of various aspects of the invention will be gained through the discussion provided below.

A liquid crystal display is a sample and hold display device such that the image at any particular point is stable until that point or pixel is updated at the next image refresh time, typically within  $\frac{1}{60}$  of a second or faster. In such a sample and hold system, displaying different images, specifically alternating left and right images for an autostereoscopic display, during sequential refresh periods of the display requires careful sequencing of the backlight light sources so that, for example, the left eye light source is not on during the display of data for the right eye and vice versa. Further the left and right eye image light sources should not be reflected or otherwise be made to appear to come from the opposing eye image light source. Methods of providing a useful backlight for such a display are to use two transparent plates with a roughened area as described in U.S. Patent Application No. 2006/013273, or a single lightguide with right and left light sources at either end and a single antireflection surface, also described in U.S. Patent Application No. 2006/013273, which is incorporated by reference herein.

FIG. 1 is a schematic side view of an illustrative display apparatus 10. The display apparatus includes a liquid crystal display panel 20 having a frame response time of less than 10 milliseconds, or less than 5 milliseconds, and a backlight 30 positioned to provide light to the liquid crystal display panel 20. The backlight 30 includes a right eye image solid state light source 32 and a left eye image solid state light source 34 capable of being modulated between the right eye image solid state light source 32 and the left eye image solid state light source 34 at a rate of at least 90 Hertz. A double sided prism film 40 is disposed between the liquid crystal display panel 20 and the backlight 30.

The liquid crystal display panel 20 and/or backlight 30 can have any useful shape or configuration. In many embodiments, the liquid crystal display panel 20 and backlight 30 has a square or rectangular shape. However, in some embodiments, the liquid crystal display panel 20 and/or backlight 30 has more than four sides or is a curved shape. While the present disclosure is directed to any backlight and associated liquid crystal display panel, the present disclosure is particularly useful for autostereoscopic displays.

A synchronization driving element 50 is electrically connected to the backlight 30 light sources 32, 34 and the liquid crystal display panel 20. The synchronization driving element 50 synchronizes activation and deactivation (i.e., modulation) of the right eye image solid state light source 32 and the left eye image solid state light source 34 as image frames are provided at a rate of 90 frames per second or greater to the liquid crystal display panel 20 to produce a flicker-free video or rendered computer graphics. An image (e.g., video or computer rendered graphics) source 60 is connected to the synchronization driving element 50 and provides the images frames (e.g., right eye images and left eye images) to the liquid crystal display panel 20.

The liquid crystal display panel 20 can be any transmissive liquid crystal display panel that has a frame response time of less than 10 milliseconds, or less than 5 milliseconds. Commercially available transmissive liquid crystal display panels having a frame response time of less than 10 milliseconds, or less than 5 milliseconds include HannStar's HSD190ME13 (HannStar Display Corporation, Taiwan) and Toshiba Matsushita Display's (TMD) optically compensated bend (OCB) mode panel LTA090A220F (Toshiba Matsushita Display Technology Co., Ltd., Japan).

The backlight 30 can be any useful backlight that can be modulated between a right eye image solid state light source 32 and left eye image solid state light source 34 at a rate of at least 90 Hertz, or 100 Hertz, or 110 Hertz, or 120 Hertz, or greater than 120 Hertz. The illustrated backlight 30 includes a first light input surface 31 adjacent to the right eye image solid state light source 32 and an opposing second light input surface 33 adjacent to the left eye image solid state light source 34 and a light output surface 35. The solid state light sources can be any useful solid state light source that can be modulated at a rate of at least 90 Hertz. In many embodiments, the solid state light source is a plurality of light emitting diodes such as, for example, Nichia NSSW020B (Nichia Chemical Industries, Ltd., Japan). In other embodiments, the solid state light source is a plurality of laser diodes or organic light emitting diodes (i.e., OLEDs). The solid state light sources can emit any number of visible light wavelengths such as white, red, blue, and/or green. The backlight can be a single layer of optically clear material with a light sources at both opposing ends or two (or more) layers of optically clear material with a light source per layer which preferentially extract light in a desired direction for each layer.

The double sided prism film **40** can be any useful prism film having a lenticular structure on a first side and a prismatic structure on an opposing side. The double sided prism film **40** transmits light from the backlight to the liquid crystal display panel **20** at the proper angles such that a viewer perceives depth in the displayed image. Useful, double sided prism films are described in United States Patent Publication Nos. 2005/0052750 and 2005/0276071, which are incorporated herein to the extent they do not conflict with the present disclosure.

The image source **60** can be any useful image source capable of providing images frames (e.g., right eye images and left eye images) such as, for example, a video source or a computer rendered graphic source. In many embodiments, the video source can provide image frames from 50 to 60 Hertz or greater. In many embodiments, the computer rendered graphic source can provide image frames from 100 to 120 Hertz or greater.

The computer rendered graphic source can provide gaming content, medical imaging content, computer aided design content, and the like. The computer rendered graphic source can include a graphics processing unit such as, for example, an Nvidia FX5200 graphics card, a Nvidia GeForce 9750 GTX graphics card or, for mobile solutions such as laptop computers, an Nvidia GeForce GO 7900 GS graphics card. The computer rendered graphic source can also incorporate appropriate stereo driver software such as, for example, OpenGL, DirectX, or Nvidia proprietary 3D stereo drivers.

The video source can provide video content. The video source can include a graphics processing unit such as, for example, an Nvidia Quadro FX1400 graphics card. The video source can also incorporate appropriate stereo driver software such as, for example, OpenGL, DirectX, or Nvidia proprietary 3D stereo drivers.

The synchronization driving element **50** can include any useful driving element providing synchronizing activation and deactivation (i.e., modulation) of the right eye image solid state light source **32** and the left eye image solid state light source **34** with image frames provided at a rate of 90 frames per second or greater to the autostereoscopic liquid crystal display panel **20** to produce a flicker-free video or rendered computer graphics. The synchronization driving element **50** can include a video interface such as, for example, a Westar VP-7 video adaptor (Westar Display Technologies, Inc., St. Charles, Mo.) coupled to custom solid state light source drive electronics.

FIG. 2A and FIG. 2B are schematic side views of an illustrative display apparatus **10** in operation. In FIG. 2A the left eye image solid state light source **34** is illuminated and the right eye image solid state light source **32** is not illuminated. In this state, the light emitted from the left eye image solid state light source **34** transmits through the backlight **30**, through the double sided prism sheet **40**, and liquid crystal panel **20** providing a left eye image directed toward the left eye **1a** of a viewer or observer. In FIG. 2B the right eye image solid state light source **32** is illuminated and the left eye image solid state light source **34** is not illuminated. In this state, the light emitted from the right eye solid state light source **32** transmits through the backlight **30**, through the double sided prism sheet **40**, and liquid crystal panel **20** providing a right eye image directed toward the right eye **1b** of a viewer or observer.

Providing at least 45 left eye images and at least 45 right eye images (alternating between right eye and left eye images and the images are possibly a repeat of the previous image pair) to a viewer per second provides a flicker-free 3D image to the viewer. Accordingly, displaying different right and left

viewpoint images either computer rendered or acquired by appropriately positioned still image or video image cameras as described above, alternating in synchronization with the switching of the light sources **32** and **34** enables the viewer to visually fuse the two different images, creating the perception of depth from the flat panel display.

In many instances, these backlights have some light that is not extracted in a single pass and this light partially reflects off the opposing light input surface. This reflected light then appears as if it came from the opposite light source and produces some level of background light into the incorrect observer eye creating cross-talk between left and right eye images in the stereo image visualization and a degraded 3D viewing experience for an observer.

Backlights **30** described herein include a plurality of anti-reflection features (described below) on opposing light input surface **31**, **33** that force reflected light to undergo multiple bounces before possibly returning toward its light input surface **31**, **33**. These features include a light absorbing material and/or an antireflection material (described below), which can be integral with the backlight or applied as a film to each light input surface of the backlight, and be regular or irregular and have an aspect ratio of greater than 0.5 or greater than one. These antireflection features aid in reducing visual cross-talk between left eye and right eye images displayed on an autostereoscopic display by reducing or eliminating the light not extracted in the first pass of the lightguide thereby, improving the stereo image visualization and 3D viewing experience for an observer.

FIG. 3 is a schematic cross-sectional view of an illustrative backlight lightguide **130**. FIG. 4A and FIG. 4B are schematic perspective views of illustrative backlight **130** light input surfaces **131**, **133**. FIG. 5 is a schematic cross-sectional view of an illustrative backlight **130** light input surface **131**, **133**. FIG. 6 is a schematic cross-sectional view of another illustrative backlight **130** light input surface **131**, **133**.

The lightguide **130** includes a light emission surface **135**, a first light input surface **131**, a second light input surface **133** opposing the first light input surface, and a lightguide thickness  $T$  value. A plurality of antireflection features **136**, **137** are on or in the first light input surface **131** and second light input surface **133**. In many embodiments, each antireflection feature **136**, **137** has a base length  $B$  value and a height  $H$  value that are less than the light guide thickness  $T$  value (see FIG. 5 and FIG. 6). In some embodiments, each antireflection feature **136**, **137** has at least two surfaces  $S_1$ ,  $S_2$  having an antireflection layer **140** or light absorption layer **140**.

In some embodiments, the antireflection feature **136**, **137** are microreplicated features that are integrally formed (e.g., molded) with the lightguide **130** (see FIG. 5). In some embodiments, the antireflection feature **136**, **137** are microreplicated features in the form of a film that is applied onto the lightguide **130** (see FIG. 6). In some cases, the antireflection features **136**, **137** may be deposited by, for example, single or multiple layer vacuum evaporation, single or multiple layer organic or inorganic coating, inkjet deposition, screen, gravure, or other printing process or roughened by mechanical, chemical or other methods for the purpose of index matching (for transmission out of the backlight). In many embodiments, the antireflection feature **136**, **137** include a plurality of prismatic structures which force reflected light to undergo multiple bounces before returning into the lightguide **130**. The plurality of prismatic structures (linearly extending as illustrated or discrete structures such as pyramidal or cube corners) can be regular or irregular. In some embodiments, other (non-prismatic structures) regular or irregular antireflection features are used such as, high

aspect ratio cones or any structure for which light entering the structure must undergo more than one bounce before returning into the lightguide.

The antireflection feature **136, 137** can be formed of any light transmitting material and can be formed of the same or different material that forms the lightguide **130**. In many embodiments, the antireflection feature **136, 137** have a substantially similar or the same refractive index as the lightguide **130** refractive index.

As shown in FIG. 4A, the plurality of prismatic antireflection features **137** can be linearly extending prismatic antireflection features **137** orientated horizontally or parallel with the light emission surface **135**. While only the second light input surface **133** of the lightguide **130** is shown, it is understood that the same configuration applied to the first light input surface **131**. In some of these embodiments, light input apertures **138** define holes or void spaces within the antireflection feature **137** structure or array. These apertures **138** allow light source **34** (see FIG. 1) light to enter the light input surface **133** of the lightguide **130**.

In many embodiments, the antireflection features **137** surround two or more sides of each aperture **138**.

As shown in FIG. 4B, the plurality of prismatic antireflection features **136** can be linearly extending prismatic antireflection features **136** orientated orthogonal or non-parallel with the light emission surface **135**. While only the first light input surface **131** of the lightguide **130** is shown, it is understood that the same configuration applied to the second light input surface **133**. In some of these embodiments, light input apertures **138** define holes or void spaces within the antireflection feature **136** structure or array. These apertures **138** allow light source **32** (see FIG. 1) light to enter the light input surface **131** of the lightguide **130**. In many embodiments, the antireflection features **136** surround two or more sides of each aperture **138**.

The antireflection feature **136, 137** include an antireflection layer **140** and/or a light absorption layer **140**. Two or more antireflection feature **136, 137** surfaces  $S_1, S_2$  include the antireflection layer **140** and/or a light absorption layer **140**. These antireflection features **136, 137** cause most incident light to undergo multiple bounces before returning to the lightguide **130** body, multiplying the absorptance of the absorbing interface **140** and hence reducing the amount of light reflected back toward the opposing light input surface **131, 133**.

When a light absorption layer **140** is employed, each antireflection feature **136** and **137** functions as a multi-bounce light sink, efficiently absorbing light transmitted from the opposing light input surface **133** and **131**, respectively. The light absorption layer **140** can be any useful light absorbing material such as, for example, a pigment, dye and the like. In many embodiments, the light absorption layer **140** includes a light absorbing or colored pigment such as, for example, a black pigment.

When an antireflection layer **140** is employed, each antireflection feature **136** and **137** functions as a multi-bounce light sink, efficiently transmitting light out of the lightguide **130** that was transmitted from the opposing light input surface **133** and **131**, respectively. The antireflection layer **140** can be any useful antireflection material or layers of materials such as, for example, silicon dioxide, alternating layers of varying refractive index polymers, and the like. In these embodiments, a light absorbing material can then be placed adjacent to the antireflection feature **136** and **137** to absorb any transmitted light, as desired.

While the linear linearly extending prismatic antireflection features **136** are illustrated orthogonal (FIG. 4B) or parallel

(FIG. 4A) with the light emission surface **135**, it is understood that the linear linearly extending prismatic antireflection features **136** can be oriented at any angle (from 0 to 90 degrees) relative to the light emission surface **135** such as, for example, 30 degrees, 45 degrees. These linearly extending prismatic antireflection features **136** may not be continuous, as illustrated in FIG. 4A and FIG. 4B where apertures **138** are placed along selected linearly extending prismatic antireflection features **136**.

FIG. 5 illustrates a lightguide **130** with antireflection features **137** integrally formed with the lightguide **130**. FIG. 6 illustrates a lightguide **130** with antireflection features **137** applied as a film on the light input surface **133** of the lightguide **130**. The antireflection feature **137** film can be adhered to the light input surface **133** of the lightguide **130** via any useful optical or light transmitting adhesive material, such as a pressure sensitive adhesive such as one available under the trade designation OP1 from 3M Company, St. Paul, Minn., or structural adhesive.

Each antireflection feature **136, 137** can have any useful shape for increasing the number or light bounces for incident light. In many embodiments, the plurality of antireflection features **136, 137** can have any regular or irregular configuration, such as pitch  $P$ , apex angle  $\theta$ , and aspect ratio. For example, the plurality of antireflection features **136, 137** can have a regular pitch  $P$ , apex angle  $\theta$ , and aspect ratio, or the plurality of antireflection features **136, 137** can have a varying pitch  $P$ , varying apex angle  $\theta$ , and/or varying aspect ratio, as desired.

In some embodiments, at least selected antireflection features **136, 137** have an apex angle  $\theta$  in a range from 85 to 95 degrees, or from 50 to 85 degrees, or from 25 to 50 degrees. In some embodiments, at least selected antireflection features **136, 137** have a pitch  $P$  in a range from 10 to 10000 micrometers, or from 50 to 1000 micrometers. In some embodiments, at least selected antireflection features **136, 137** have an aspect ratio (i.e., height  $H$ /base  $B$ ) in a range from 0.5 to 10, or 0.5 or greater. In some embodiments, the antireflection feature **136, 137** can be provided as a commercially available film under the trade designation BRIGHTNESS ENHANCING FILM or BEF, BEF II, or BEF III from 3M Company, St. Paul, Minn.

Thus, embodiments of the BACKLIGHT FOR LIQUID CRYSTAL DISPLAY are disclosed. One skilled in the art will appreciate that the present invention can be practiced with embodiments other than those disclosed. The disclosed embodiments are presented for purposes of illustration and not limitation, and the present invention is limited only by the claims that follow.

What is claimed is:

1. A backlight, comprising,

a lightguide having a light emission surface, a first light input surface, a second light input surface opposing the first light input surface, and a lightguide thickness, a plurality of antireflection features are on or in the first light input surface and second light input surface, each antireflection feature has a base length value and a height value that are less than the light guide thickness; and  
a right eye image solid state light source positioned to provide light into the first light input surface, and a left eye image solid state light source positioned to provide light into the second light input surface.

2. A backlight according to claim 1, wherein at least selected antireflection features have at least two surfaces comprising an antireflection layer or light absorption layer.

3. A backlight according to claim 1, wherein at least selected antireflection features have at least two surfaces comprising a light absorption layer.

4. A backlight according to claim 1, wherein at least selected antireflection features have an aspect ratio of 0.5 or greater.

5. A backlight according to claim 1, wherein at least selected antireflection features form linear prism elements.

6. A backlight according to claim 5, wherein at least selected linear prism elements extend parallel to the light emission surface of the lightguide.

7. A backlight according to claim 5, wherein at least selected linear prism elements extend orthogonal to light emission surface of the lightguide.

8. A backlight, comprising,

a lightguide having a light emission surface, a first light input surface, a second light input surface opposing the first light input surface, and a lightguide thickness, a plurality of antireflection features are on or in the first light input surface and second light input surface, each antireflection feature has at least two surfaces comprising an antireflection layer or light absorption layer; and a right eye image solid state light source positioned to provide light into the first light input surface, and a left eye image solid state light source positioned to provide light into the second light input surface.

9. A backlight according to claim 8, wherein at least selected antireflection features has a base length value and a height value that are less than the light guide thickness.

10. A backlight according to claim 8, wherein at least selected antireflection features have at least two surfaces comprising a light absorption layer.

11. A backlight according to claim 9, wherein at least selected antireflection features have an aspect ratio of 0.5 or greater.

12. A backlight according to claim 8, wherein at least selected antireflection features form linear prism elements.

13. A backlight according to claim 12, wherein at least selected linear prism elements extend parallel to light emission surface of the lightguide.

14. A backlight according to claim 12, wherein at least selected linear prism elements extend orthogonal to light emission surface of the lightguide.

15. A display apparatus, comprising;

an autostereoscopic liquid crystal display panel; and a backlight positioned to provide light to the autostereoscopic liquid crystal display panel, the backlight comprising;

a lightguide having a light emission surface, a first light input surface, a second light input surface opposing the

first light input surface, and a lightguide thickness, a plurality of antireflection features are on or in the first light input surface and second light input surface, each antireflection feature has a base length value and a height value that are less than the light guide thickness; and

a right eye image solid state light source positioned to provide light into the first light input surface, and a left eye image solid state light source positioned to provide light into the second light input surface.

16. A display apparatus according to claim 15, wherein at least selected antireflection features have at least two surfaces comprising an antireflection layer or light absorption layer.

17. A display apparatus according to claim 15, wherein at least selected antireflection features have an aspect ratio of 0.5 or greater.

18. A display apparatus according to claim 15, wherein at least selected antireflection features form linear prism elements.

19. A display apparatus according to claim 15, further comprising a synchronization driving element that synchronizes activation and deactivation of the right eye image solid state light source and the left eye image solid state light source with image frames displayed on the autostereoscopic liquid crystal display panel.

20. A display apparatus, comprising;

an autostereoscopic liquid crystal display panel; and a backlight positioned to provide light to the autostereoscopic liquid crystal display panel, the backlight comprising;

a lightguide having a light emission surface, a first light input surface, a second light input surface opposing the first light input surface, and a lightguide thickness, a plurality of antireflection features are on or in the first light input surface and second light input surface, each antireflection feature has at least two surfaces comprising an antireflection layer or light absorption layer; and a right eye image solid state light source positioned to provide light into the first light input surface, and a left eye image solid state light source positioned to provide light into the second light input surface.

21. A display apparatus according to claim 20, wherein at least selected antireflection features form linear prism elements.

22. A display apparatus according to claim 20, further comprising a synchronization driving element that synchronizes activation and deactivation of the right eye image solid state light source and the left eye image solid state light source with image frames displayed on the autostereoscopic liquid crystal display panel.

\* \* \* \* \*

专利名称(译)	用于液晶显示器的背光		
公开(公告)号	<a href="#">US7528893</a>	公开(公告)日	2009-05-05
申请号	US11/750412	申请日	2007-05-18
[标]申请(专利权)人(译)	明尼苏达州采矿制造公司		
申请(专利权)人(译)	3M创新有限公司		
当前申请(专利权)人(译)	3M创新有限公司		
[标]发明人	SCHULTZ JOHN C BROTT ROBERT L SYKORA MICHAEL J		
发明人	SCHULTZ, JOHN C. BROTT, ROBERT L. SYKORA, MICHAEL J.		
IPC分类号	G02F1/1335		
CPC分类号	G02B6/0016 G02B6/0053 G02B6/0068 G02B27/2264 G02B30/24		
审查员(译)	内尔姆斯, DAVID		
其他公开文献	US20080284945A1		
外部链接	<a href="#">Espacenet</a> <a href="#">USPTO</a>		

摘要(译)

背光源包括具有光发射表面的光导，第一光输入表面，与第一光输入表面相对的第二光输入表面，以及光导厚度。多个抗反射特征在第一光输入表面和第二光输入表面上或中。每个抗反射特征具有小于光导厚度的基本长度值和高度值。定位右眼图像固态光源以将光提供到第一光输入表面中，并且定位左眼图像固态光源以将光提供到第二光输入表面中。

