



US007170570B2

(12) **United States Patent**  
**Kim et al.**

(10) **Patent No.:** **US 7,170,570 B2**  
(45) **Date of Patent:** **Jan. 30, 2007**

- (54) **LIQUID CRYSTAL DISPLAY**
- (75) Inventors: **Dong-Gyu Kim**, Suwon (KR);  
**Sang-Soo Kim**, Seoul (KR);  
**Sang-Wook Lee**, Youngin (KR)
- (73) Assignee: **Samsung Electronics Co., Ltd.** (KR)
- (\*) Notice: Subject to any disclaimer, the term of this patent is extended or adjusted under 35 U.S.C. 154(b) by 96 days.

6,300,997	B1	10/2001	Saito et al.	
6,373,546	B1	4/2002	Kim	
6,424,400	B1	7/2002	Kawasaki	
6,456,353	B1 *	9/2002	Chen .....	349/150
6,507,384	B1 *	1/2003	Endo et al. ....	349/149
6,686,987	B1 *	2/2004	Sakaki et al. ....	349/149
6,778,247	B2 *	8/2004	Lee et al. ....	349/149
6,829,029	B2 *	12/2004	Park et al. ....	349/149

- (21) Appl. No.: **10/851,642**
- (22) Filed: **May 24, 2004**
- (65) **Prior Publication Data**  
US 2005/0007510 A1 Jan. 13, 2005

**FOREIGN PATENT DOCUMENTS**

JP	4-218933	8/1992
JP	5-188390	7/1993
JP	2003222896 A	8/2003
JP	2003228298 A	8/2003
JP	2003241216 A	8/2003
JP	2003241221 A	8/2003
KR	2000-0047824	5/2000
KR	1997-0028763	1/2001

\* cited by examiner

*Primary Examiner*—Andrew Schechter  
*Assistant Examiner*—David Chung

- Related U.S. Application Data**
- (63) Continuation of application No. 10/351,525, filed on Jan. 27, 2003, now Pat. No. 6,741,309, which is a continuation of application No. 09/901,127, filed on Jul. 10, 2001, now Pat. No. 6,636,288.

- (30) **Foreign Application Priority Data**  
Jul. 27, 2000 (KR) ..... 2000-43508

- (51) **Int. Cl.**  
**G02F 1/136** (2006.01)

- (52) **U.S. Cl.** ..... **349/43; 349/150; 349/152**
- (58) **Field of Classification Search** ..... 349/139, 349/143, 149, 150, 151, 152, 43  
See application file for complete search history.

- (56) **References Cited**  
U.S. PATENT DOCUMENTS

5,467,210	A	11/1995	Kishigami	
5,670,994	A	9/1997	Kawaguchi et al. ....	345/206
5,737,053	A	4/1998	Yomogihara et al.	
6,005,652	A	12/1999	Matsuhira	
6,163,356	A	12/2000	Song et al.	
6,281,959	B1	8/2001	Kim et al.	

(57) **ABSTRACT**

A liquid crystal display includes an insulating substrate, gate and data lines formed on the substrate to define pixel areas, or collectively a display area. Gate signal interconnection wires are formed at a corner portion of the substrate outside the display area to transmit gate electrical signals, and provided with gate signal interconnection lines and first and second gate signal interconnection pads connected to both ends of the gate signal interconnection lines. A gate insulating layer, and a protective layer are further formed on the substrate, and provided with first and second contact holes exposing the first and second gate signal interconnection pads. Gate and data signal transmission films are attached to the substrate, and provided with first and second gate signal leads and first and second gate signal wires. The first and second gate signal leads are connected to the first and second gate signal interconnection pads through the first and second contact holes. The first or the second gate signal lead completely covers the first or the second contact hole at least in the longitudinal direction of the lead.

**7 Claims, 10 Drawing Sheets**

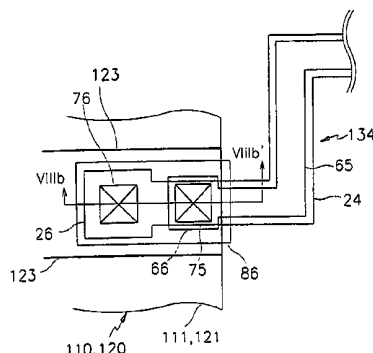




Fig. 2

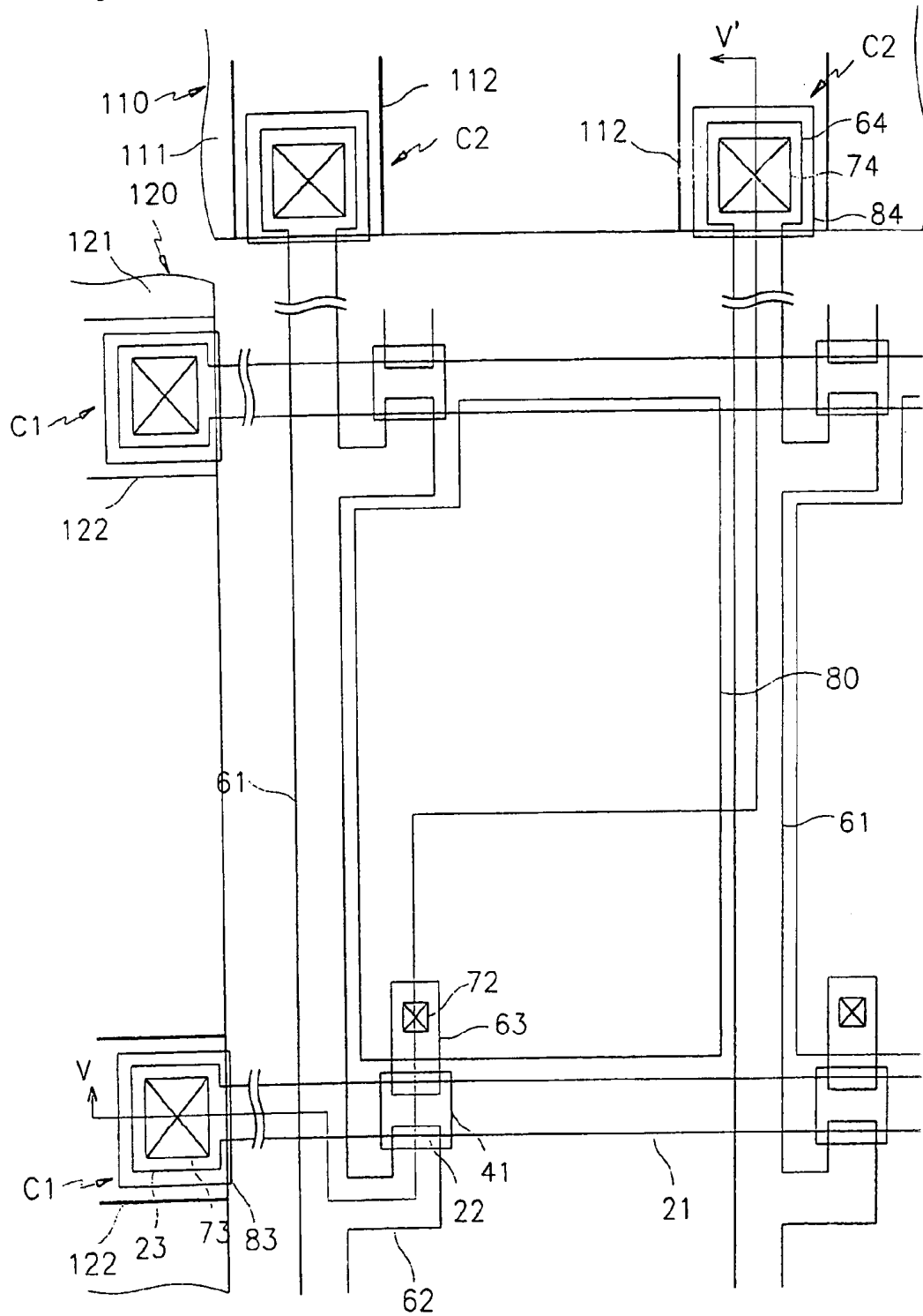


Fig.3

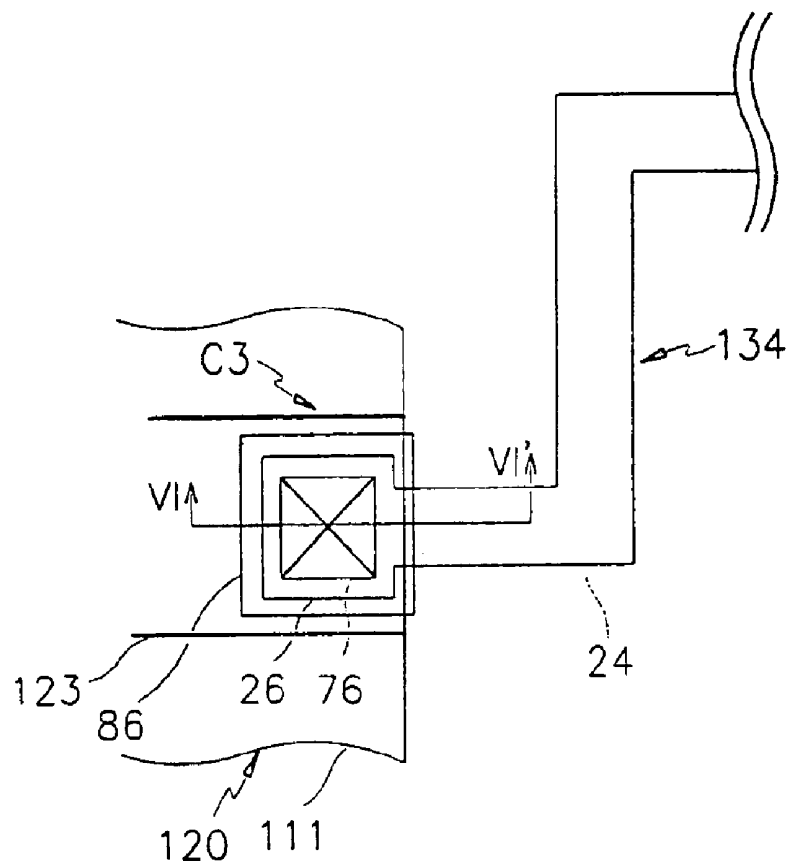
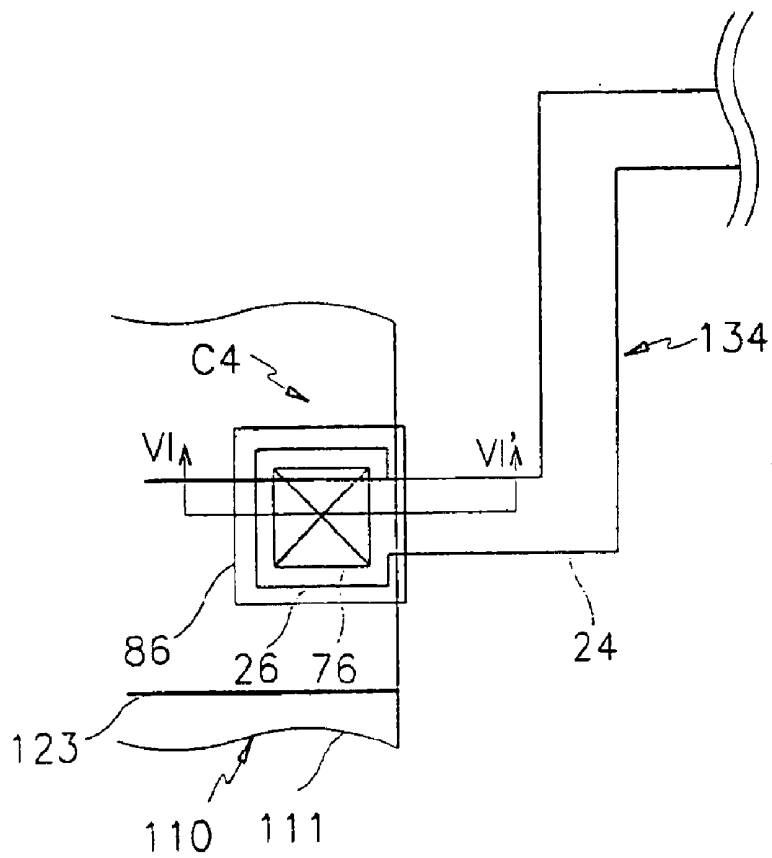


Fig. 4



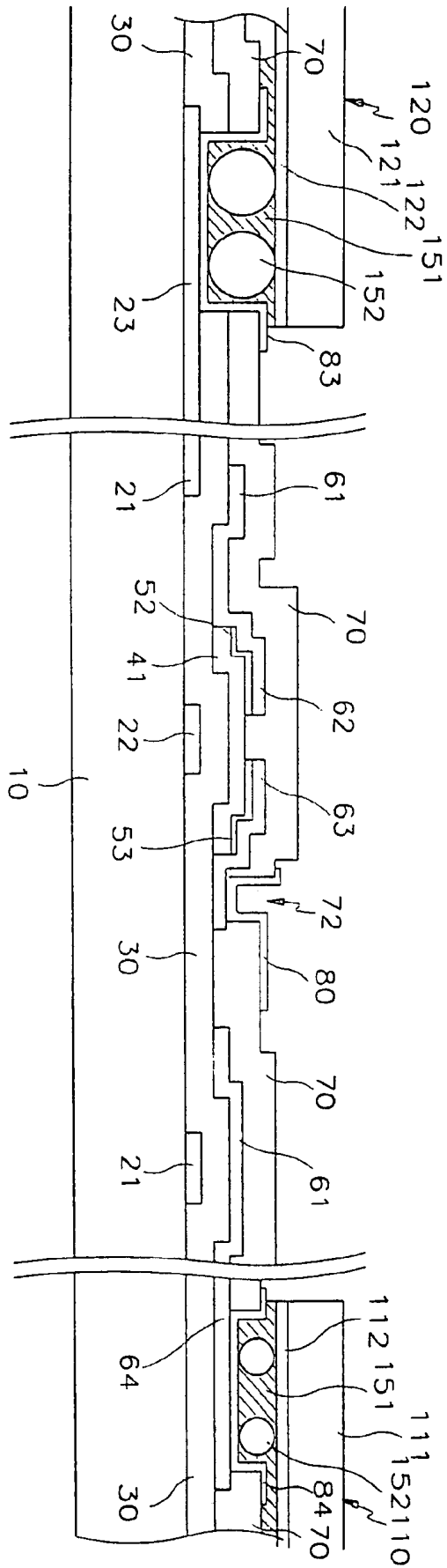


Fig.5

Fig.6

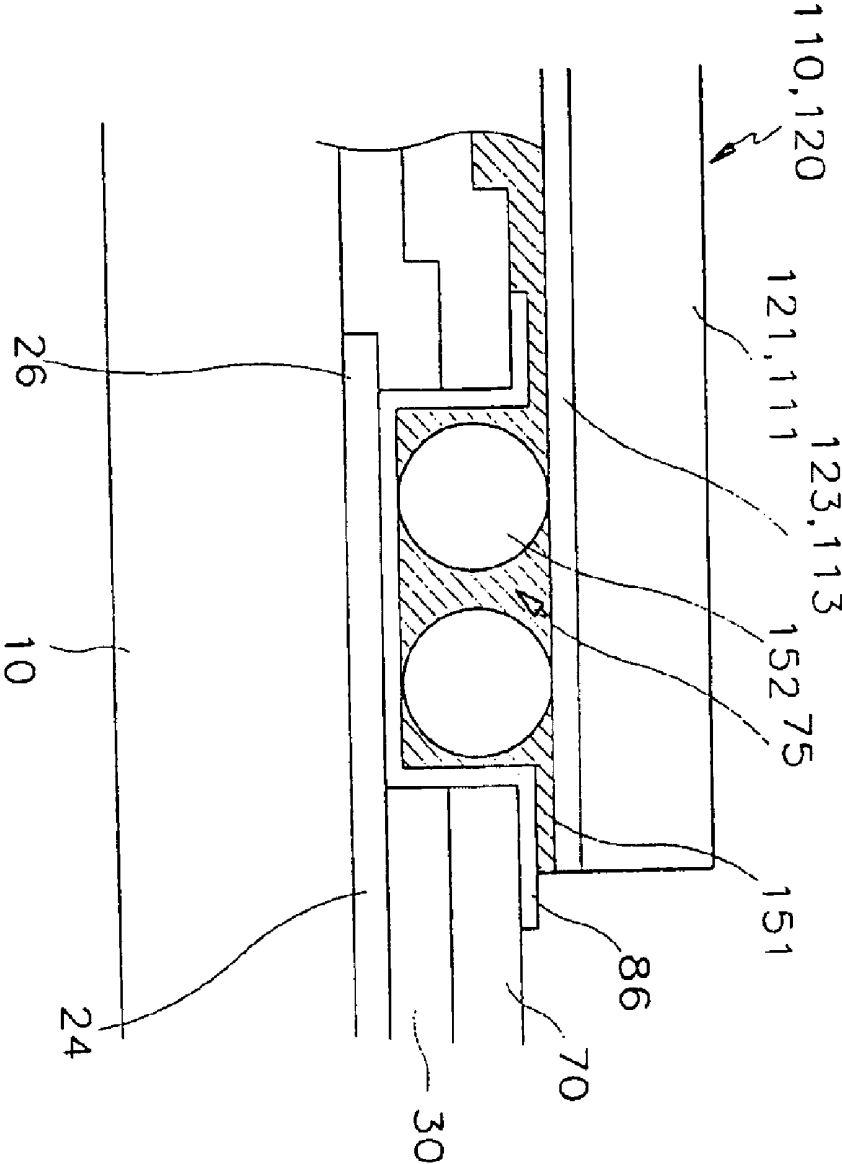


Fig. 7a

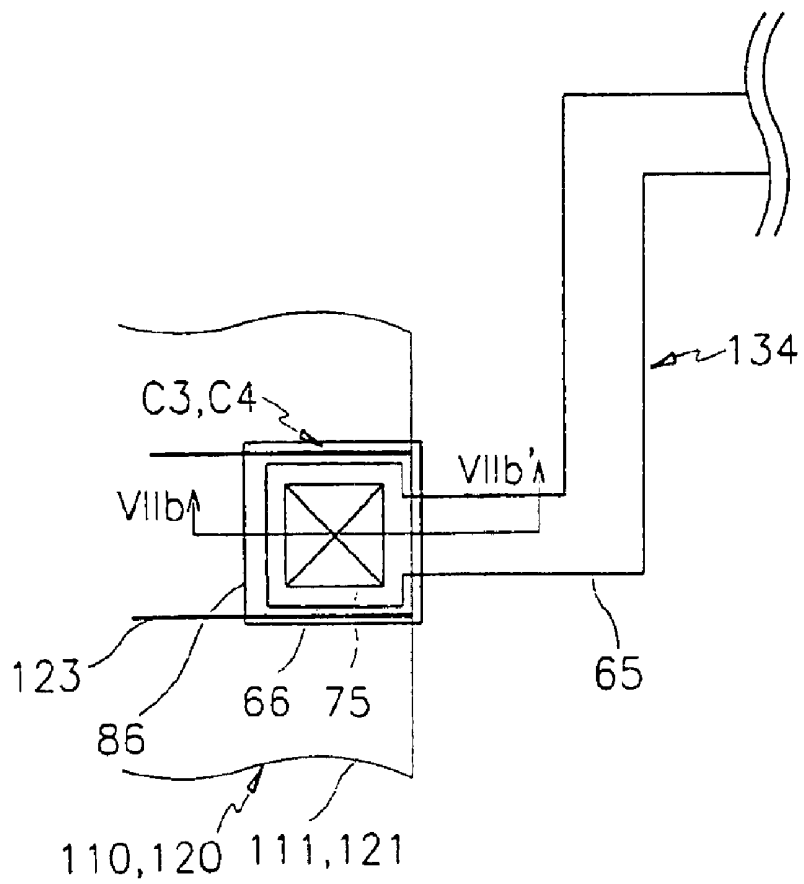


Fig. 7b

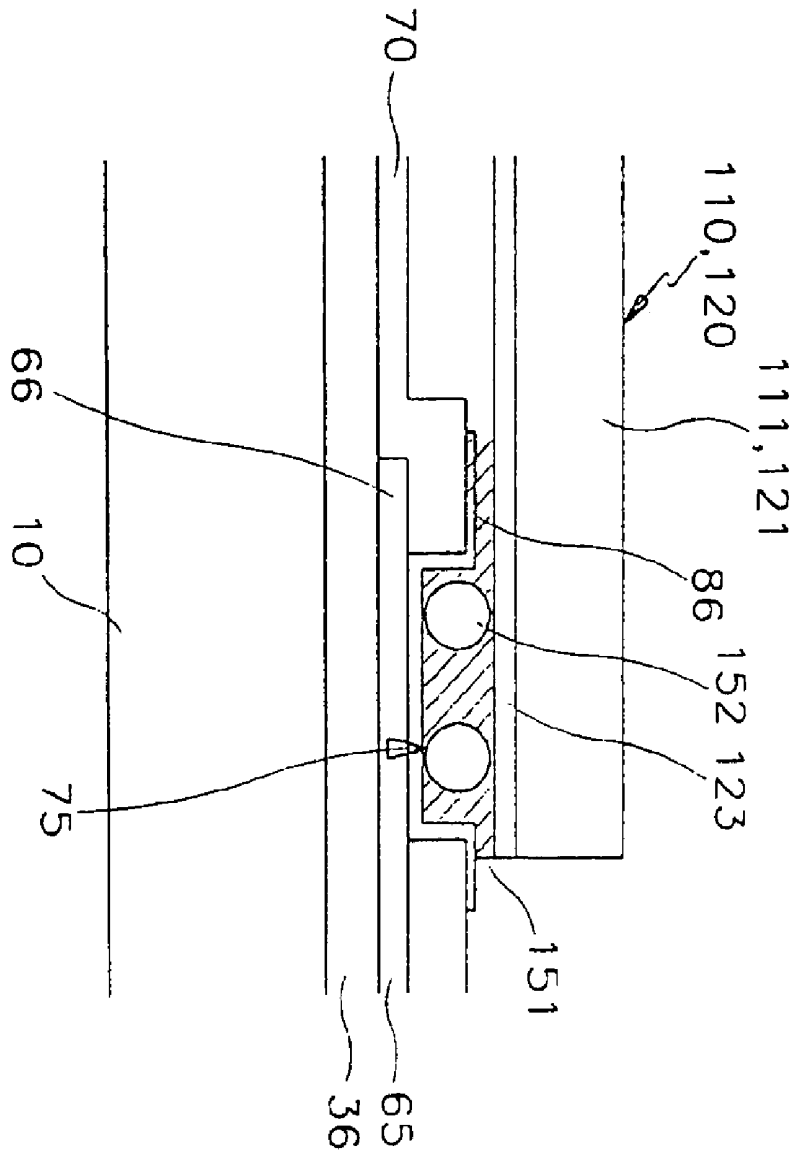


Fig.8a

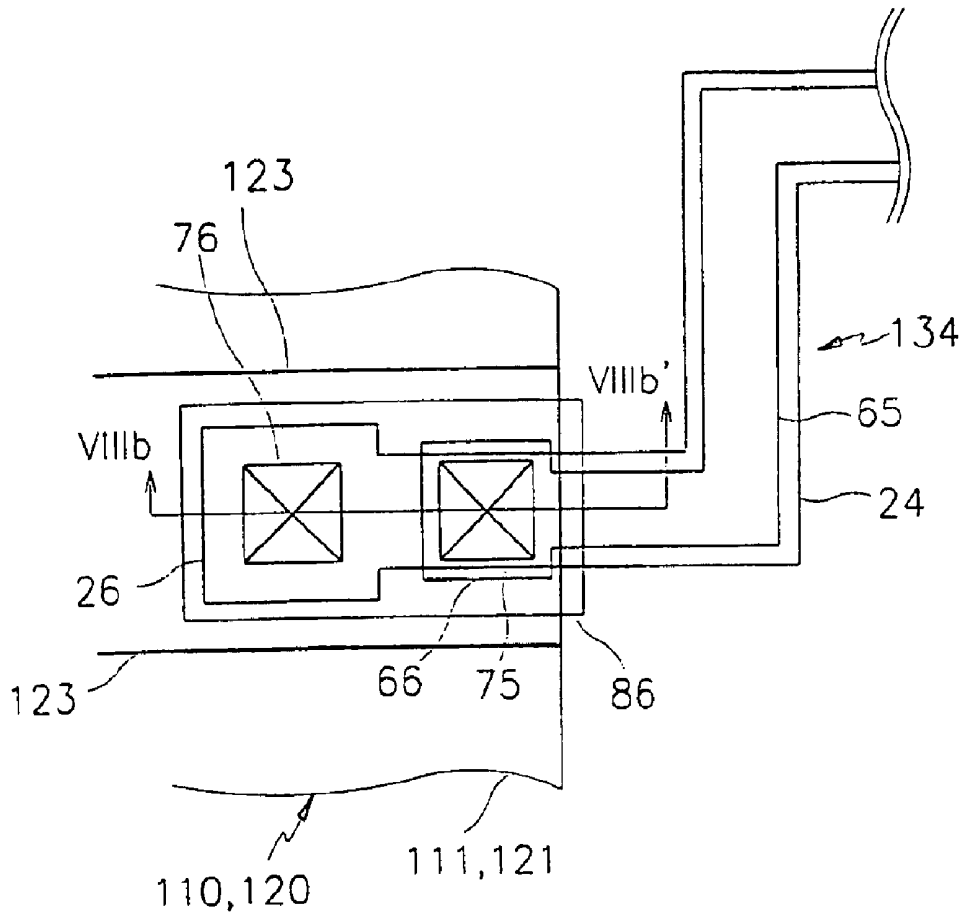
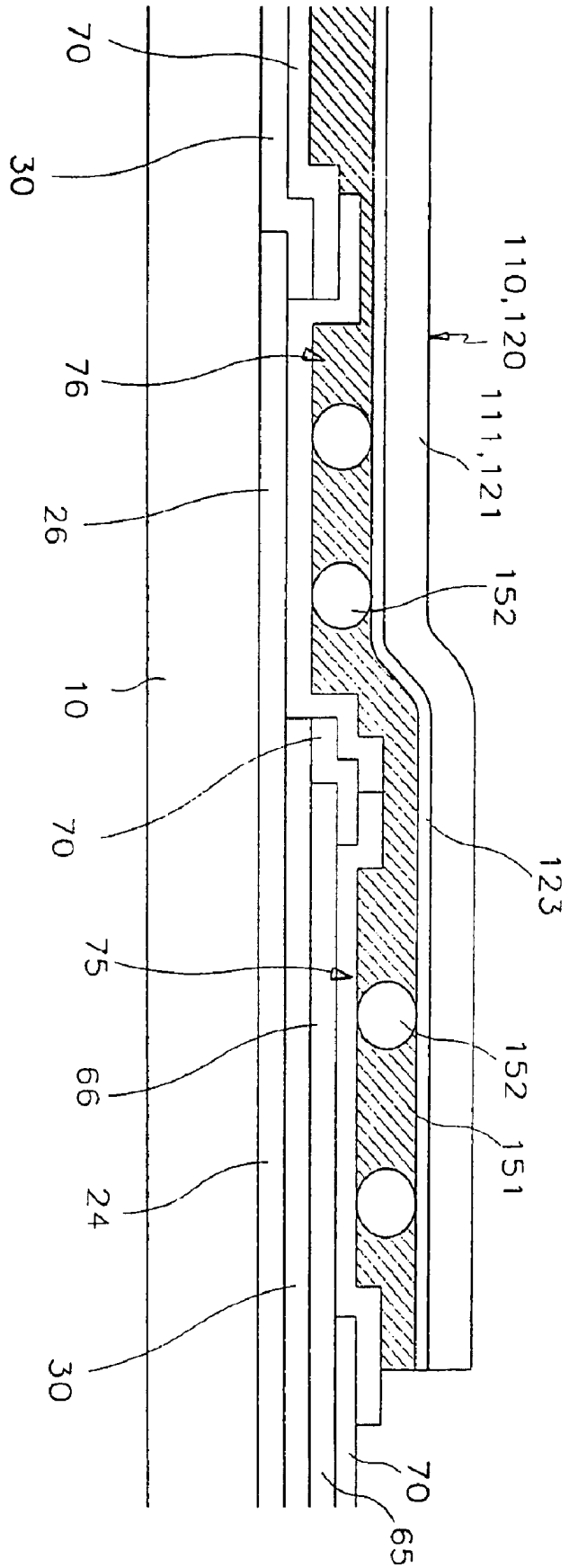


Fig. 8b



**LIQUID CRYSTAL DISPLAY****CROSS REFERENCE**

This application is a continuation application of Applicant's U.S. patent application Ser. No. 10/351,525 filed on Jan. 27, 2003, now U.S. Pat. No. 6,741,309, which is a continuation application of Ser. No. 09/901,127, filed on Jul. 10, 2001, now U.S. Pat. No. 6,636,288.

**BACKGROUND OF THE INVENTION****(a) Field of the Invention**

The present invention relates to a liquid crystal display and a method for fabricating the same and, more particularly, to a liquid crystal display showing good performance characteristics.

**(b) Description of the Related Art**

A liquid crystal display is one of the flat panel displays that have been currently used in a most extensive manner. Such a liquid crystal display basically has two glass substrates with electrodes for generating electric fields, a liquid crystal layer sandwiched between the substrates, and polarizing plates externally attached to the substrates. When voltage is applied to the electrodes, the liquid crystal molecules are re-oriented to thereby control light transmission.

One of the substrates is provided with an array of thin film transistors (TFTs) for switching voltages applied to the electrodes.

The TFT array substrate has a plurality of gate and data lines proceeding in the horizontal and vertical directions, respectively. The data lines cross over the gate lines to thereby define pixel areas, and pixel electrodes are formed at the pixel areas. The TFTs control picture signals transmitted thereto through the data lines in accordance with scanning signals transmitted thereto through the gate lines, and sends the picture signals to the pixel electrodes. The display area may be outlined by the set of the pixel areas surrounded by the wiring lines. A plurality of gate and data pads are formed at the TFT array substrate external to the display area while being connected to the gate and data lines. The gate and data pads are directly connected to external driving ICs to receive scanning signals and picture signals from the outside, and transmit the signals to the relevant signal lines.

A gate printed circuit board, and a data printed circuit board are provided external to the TFT array substrate to transmit relevant signals thereto. A data signal transmission film interconnects the TFT array substrate with the data printed circuit board, and a data driving IC is mounted on the data signal transmission film to convert electrical signals into data signals, and send the data signals to the data pads and the data lines. Furthermore, gate signal transmission films connect the TFT array substrate with the gate printed circuit board, and gate driving ICs are mounted on the gate signal transmission films to convert electrical signals into gate signals, and send the gate signals to the gate pads and the gate lines.

Gate signal pads, and data signal pads are aligned with the gate and data pads in a one to one correspondence, and connected thereto through thermal compression process using an anisotropic conductive film (ACF).

Meanwhile, the gate printed circuit board may be omitted. In this case, the data printed circuit board generates gate signals, and sends the signals to the gate signal transmission film. Gate signal wires for transmitting the gate signals are formed at the data signal transmission film connected to the

data printed circuit board. Gate signal interconnection wires are formed at the TFT array substrate to connect the gate signal lines of the gate signal transmission films with the gate signal wires. The gate signal wires, and the gate signal interconnection wires are connected to each other to receive gate signals from the data printed circuit board, and transmit the signals to the gate driving ICs.

However, in the above structure, corrosion should not occur at both pad portions of the gate signal interconnection wires interconnecting the gate signal lines and the gate signal wires to obtain good contact characteristics, and the thermal compression process using the ACF should be performed in a stable manner.

**SUMMARY OF THE INVENTION**

It is an object of the present invention to provide a liquid crystal display which involves good contact characteristics.

It is another object of the present invention to provide a liquid crystal display where gate signal interconnection pads are covered by leads of gate and data signal transmission films, or stepped difference at the contact portions is minimized.

These and other objects may be achieved by a liquid crystal display with an insulating substrate. The substrate is overlaid with a plurality of gate lines, and a plurality of data lines crossing over the gate lines to define pixel areas. A gate signal interconnection line assembly is formed at the substrate. The gate signal interconnection line assembly is provided with gate signal interconnection lines, and first and second gate signal interconnection pads connected to both ends of the gate signal interconnection lines to relay gate electrical signals to the gate lines. Insulating layers are formed on the substrate while bearing first and second contact holes exposing the first and second gate signal interconnection pads. Gate signal transmission films are attached to the substrate while each mounting a gate driving integrated circuit thereon to receive gate electrical signals and send gate signals to the gate lines. Each gate transmission film has first gate signal wires, and first gate signal leads connected to the first gate signal interconnection pads through the first contact holes. Data signal transmission films are attached to the substrate with second gate signal wires, and second gate signal leads connected to the second gate signal interconnection pads through the second contact holes. The first or the second gate signal lead completely covers the first or the second contact hole at least in the longitudinal direction of the lead.

The liquid crystal display further includes a printed circuit board connected to the data signal transmission films to send the gate and data electrical signals to the gate driving integrated circuits and the data driving integrated circuit.

Pixel electrodes are formed on the insulating layer at the pixel areas. First and second subsidiary gate signal interconnection pads are formed at the same plane as the pixel electrodes while covering the first and second contact holes. The first and second subsidiary gate signal interconnection pads are positioned between the first and second gate signal interconnection pads and the first and second gate signal leads, respectively.

The insulating layers are formed with a gate insulating layer covering the gate lines, and a protective layer covering the data lines over the gate insulating layer. The first or the second gate signal lead completely covers at least one side of each contact hole in the longitudinal direction. The gate signal interconnection line assembly may be formed at the same plane as the gate lines or the data lines, and provided

with first gate signal interconnection lines placed at the same plane as the gate lines, and second gate signal interconnection lines placed at the same plane as the data lines. The first and the second gate signal interconnection lines are connected to each other via the first and second subsidiary gate signal interconnection pads.

#### BRIEF DESCRIPTION OF THE DRAWINGS

A more complete appreciation of the invention, and many of the attendant advantages thereof, will be readily apparent as the same becomes better understood by reference to the following detailed description when considered in conjunction with the accompanying drawings in which like reference symbols indicate the same or the similar components, wherein:

FIG. 1 is a plan view of a TFT array substrate for a liquid crystal display according to a first preferred embodiment of the present invention;

FIG. 2 is a partial amplified view of the TFT array substrate shown in FIG. 1 where the pixel area and the pad area are illustrated;

FIGS. 3 and 4 are partial amplified views of the TFT array substrate shown in FIG. 1 where gate signal wiring structures and contact or pad portions are specifically illustrated;

FIG. 5 is a cross sectional view of the TFT array substrate taken along the V-V' line of FIG. 2;

FIG. 6 is a cross sectional view of the TFT array substrate taken along the VI-VI' line of FIGS. 3 or 4;

FIGS. 7A and 7B are plan views of a TFT array substrate for a liquid crystal display according to a second preferred embodiment where a gate signal interconnection wire is illustrated; and

FIGS. 8A and 8B are plan views of a TFT array substrate for a liquid crystal display according to a third preferred embodiment where a gate signal interconnection wire is illustrated.

#### DETAILED DESCRIPTION OF THE PREFERRED EMBODIMENTS

Preferred embodiments of this invention will be explained with reference to the accompanying drawings.

FIG. 1 schematically illustrates a TFT array substrate for a liquid crystal display according to a first preferred embodiment of the present invention.

As shown in FIG. 1, a plurality of gate lines 21 are formed on an insulating substrate 10 in the horizontal direction, and a plurality of data lines 61 proceed in the vertical direction while being electrically insulated from the gate lines 21.

The data lines 61 cross over the gate lines 21 to thereby define pixel areas P, and the pixel areas P collectively form a display area D. A thin film transistor TFT is formed at each pixel area P while being connected to the gate lines 21 and the data lines 61. A pixel electrode PE is also provided at each pixel area while being connected to the TFT. A black matrix 11 is formed at the substrate 10 outside the display area D to prevent light leakage.

A printed circuit board 100 is positioned outside of the substrate 10 in the horizontal direction to output gate and data electrical signals for driving the device. The printed circuit board 100, and the substrate 10 are electrically connected to each other via data signal transmission films 110. A data driving IC 130 is mounted on each data signal transmission film 110 to provide picture signals. The data signal transmission film 110 is also provided with a plurality

of data signal lines 114, and a plurality of first gate signal wires 115. The data signal lines 114 are connected to the data lines 61 at contact portions C2 to relay the picture signals issued from the data driving IC 130 to the data lines 61.

A plurality of gate signal transmission films 120 are arranged at the left side of the substrate 10 in the vertical direction while being electrically connected thereto. A gate driving IC 140 is mounted on each gate signal transmission film 120 to issue scanning signals or gate signals. Each gate signal transmission film 120 is also provided with a plurality of second gate signal wires 124, and gate signal lines 126 connected to the gate lines 21 at connection or contact portions C1 to relay the gate signals issued from the gate driving IC 140 to the gate lines 21.

Gate signal interconnection wires 134 are arranged at the left top corner portion of the substrate 10 external to the display area D. The gate signal interconnection wires 134 connect the first gate signal wires 115 of the data signal transmission film 110 with the second gate signal wires 124 of the gate signal transmission film 120 at contact portions C4 and C3.

Third gate signal wires 136 are formed at the left side of the substrate 10 external to the display area D. The third gate signal wires 136 interconnect the second gate signal wires 124 of the neighboring gate signal transmission films 120 at the contact or pad portions C5 and C6.

The substrate 10, and the plurality of signal lines or wires 114, 115, 61, 134, 124, 126 and 136 are provided with pads at the pad or contact portions C1 through C6, and connected to each other via the pads using an anisotropic conductive film.

In the above-structured liquid crystal display, the gate electrical signals issued from the printed circuit board 100 are transmitted to the gate signal interconnection wires 134 via the first gate signal wires 115. The gate electrical signals are then sent to the gate driving IC 140 via the second gate signal wires 124, or transmitted to the third gate signal wires 136. Thereafter, the gate electrical signals are partially converted into gate signals at the gate driving IC 140, and the gate signals are sent to the gate lines 21 through the gate signal lines 126. That is, the gate electrical signals issued from the printed circuit board 100 are partially sent to the gate lines 21 via the first to third gate signal wires 115, 124 and 136, and the gate signal interconnection wires 134.

Meanwhile, in addition to the data signal transmission films 110, separate signal transmission films may be provided to connect the printed circuit board 100 to the substrate 10. In this structure, the first gate signal wires 115 would be formed at the separate signal transmission films.

The main structure of the TFT array substrate according to the first preferred embodiment will be now described with reference to FIGS. 2 to 6.

FIG. 2 is a partial amplified view of the TFT array substrate shown in FIG. 1 where the pixel area P and the pad portions C1 and C2 are specifically illustrated. FIGS. 3 and 4 are partial amplified views of the TFT array substrate shown in FIG. 1 where the gate signal wiring structure and the contact or pad portions C3 and C4 are specifically illustrated. FIG. 5 is a cross sectional view of the TFT array substrate taken along the V-V' line of FIG. 2, and FIG. 6 is a cross sectional view of the TFT array substrate taken along the VI-VI' line of FIGS. 3 or 4. Since the contact portions C3 and C4 bear the same structure, only one contact portion is illustrated in FIG. 6.

The pixel area P, the contact portions C1 to C4, and the gate signal interconnection wires 134 will be first introduced

while omitting detailed description of the third gate signal wires **136**, and the contact portions **C5** and **C6** because they have the same structure as the gate signal interconnection wires **134**, and the contact portions **C3** and **C4**.

As shown in FIG. 2, a gate line assembly is formed on the insulating substrate **10** at the same plane as the gate signal interconnection wires **134** with a metallic or conductive material such as Al or Al alloy, Mo or MoW alloy, Cr, and Ta.

The gate line assembly includes a plurality of gate lines **21**, gate electrodes **22** part of the gate lines **21**, and gate pads **23** connected to the end portions of the gate lines **21** to receive scanning signals from the outside and transmit them to the gate lines **21**. Each gate signal interconnection wire **134** is provided with a gate signal interconnection line **24**, and gate signal interconnection pads **26** connected to both ends of the gate signal interconnection line **24**.

The gate line assembly, and the gate signal interconnection wires **134** may have a single-layered structure, or a multiple-layered structure. In the case of a double-layered structure, one layer is formed with a material bearing a lower resistance, and the other layer is formed with a material bearing good contact characteristics with other materials. For example, the double-layered structure may be formed with a chrome-based layer and an aluminum alloy-based layer, or a molybdenum or molybdenum-based layer and an aluminum-based layer.

A gate insulating layer **30** is formed on the substrate **10** with silicon nitride while covering the gate line assembly and the gate signal interconnection wires **134**.

A semiconductor pattern **41** is formed on the gate insulating layer **30** over each gate electrode **22** with amorphous silicon. Ohmic contact patterns **52** and **53** are formed on the semiconductor pattern **41** with amorphous silicon doped with n-type impurities such as P, and separated from each other around the gate electrode **22**.

A data line assembly is formed on the ohmic contact patterns **52** and **53**, and the gate insulating layer **30** with a metallic or conductive material such as Al or Al alloy, Mo or MoW alloy, Cr, and Ta.

The data line assembly includes a plurality of data lines **61**, source electrodes **62** branched from the data lines **61**, drain electrodes **63** separated from the source electrodes **62** while interposing the gate electrodes **21** between them, and data pads **64** connected to the data lines **61** to receive picture signals from the outside and transmit them to the data lines **61**.

The data line assembly may have a single-layered structure, or a multiple-layered structure. In the case of a double-layered structure, one layer is formed with a material bearing a lower resistance, and the other layer is formed with a material bearing good contact characteristics with other materials.

Each TFT is formed with the gate electrode **22**, the semiconductor pattern **41**, and source and drain electrodes **62** and **63**.

A protective layer **70** is formed on the data line assembly and the gate insulating layer **30** exposed through the data line assembly with silicon nitride or organic insulating material. The protective layer **70** has contact holes **73** exposing the gate pads **23** together with the gate insulating layer **30** at the contact portions **C1**, contact holes **74** exposing the data pads **64** at the contact portions **C2**, and contact holes **72** exposing the drain electrodes **63** at the pixel areas **P**. Furthermore, the protective layer **70** further has contact

holes **76** exposing the gate signal interconnection pads **26** together with the gate insulating layer **30** at the contact portions **C3** and **C4**.

Pixel electrodes **80**, subsidiary gate pads **83**, subsidiary data pads **84**, and subsidiary gate signal interconnection pads **86** are formed on the protective layer **70** with a transparent conductive material such as indium tin oxide (ITO), or indium zinc oxide (IZO).

The pixel electrodes **80** are connected to the drain electrodes **63** through the contact holes **72** to receive picture signals. The subsidiary gate and data pads **83** and **84** are connected to the gate and data pads **64** through the contact holes **73** and **74** to protect them, and enhance adhesion thereof to external circuits.

The subsidiary gate signal interconnection pads **86** are connected to the gate signal interconnection pads **26** through the contact holes **76**.

In the meantime, the gate signal transmission film **120** has gate signal leads **122** overlaid with an insulating resin layer **121**. Each gate signal lead **122** is physico-electrically connected to the subsidiary gate pad **83** via an anisotropic conductive film with conductive particles **152** and adhesives **151**. The gate signal lead **122** completely covers the contact hole **73** in the longitudinal direction as well as in the direction of width. The gate signal lead **122** may or may not completely cover the contact hole **73** or the subsidiary gate pad **83**.

The data signal transmission film **110** has a data signal lead **112** overlaid with an insulating resin layer **111**. The data signal lead **122** is physico-electrically connected to the subsidiary data pad **84** via an anisotropic conductive film with conductive particles **152** and adhesives **151**. The data signal lead **112** may or may not completely cover the contact hole **74** or the subsidiary data pad **84**.

In the gate and data signal transmission films **110** and **120** at the contact portions **C3** and **C4**, gate signal interconnection leads **123** are formed under the insulating resin layers **111** and **121**. The gate signal interconnection leads **123** are connected to the subsidiary gate signal interconnection pads **86** via an anisotropic conductive film with conductive particles **152** and adhesives **151**, thereby electrically interconnecting the first and second gate signal wires **115** and **124**. The gate signal interconnection lead **123** completely covers the contact hole **76** of the protective layer **70** and the gate insulating layer **30** in the longitudinal direction as well as in the direction of width. As shown in FIG. 4, the gate signal interconnection lead **123** may cover at least one longitudinal side of the contact hole **76** or the subsidiary gate signal pad **86**. The gate signal interconnection lead **123** may or may not completely cover the subsidiary gate signal pad **86**.

In the above structure, the gate signal interconnection leads **123** or the anisotropic conductive films of the gate and data signal transmission films **110** and **120** completely cover the contact hole **76** over the subsidiary gate signal interconnection pads **86** so that corrosion does not occur at the pad portions **C3** and **C4**, and adhesion can be strengthened at those portions.

In order to further enhance contact characteristics at the contact portions **C3** and **C4**, it may be controlled that stepped difference at the contact hole **86** should be minimized. For this purpose, the interconnection line of the gate signal interconnection wire **134** may be formed at the same plane as the data line assembly.

FIGS. 7A and 7B illustrate the wiring structure of a TFT array substrate according to a second preferred embodiment of the present invention.

In this preferred embodiment, other components and structures of the TFT array substrate are the same as those related to the first preferred embodiment except that gate signal interconnection lines **65** and gate signal interconnection pads **66** of the gate signal interconnection wires **134** are placed at the same plane as the data line assembly on the gate insulating layer **30**, and contact holes **75** exposing the gate signal interconnection pads **66** are only formed at the protective layer **70**. The contact holes **75** are preferably formed to be smaller than the gate signal interconnection pads **66**.

FIGS. **8A** and **8B** illustrate the wiring structure of a TFT array substrate according to a third preferred embodiment of the present invention. In this preferred embodiment, other components and structures of the TFT array substrate are the same as those related to the first preferred embodiment except for the following features.

As shown in FIGS. **8A** and **8B**, each gate signal interconnection wire **134** has double-structured gate signal interconnection lines **24** and **65** with gate signal interconnection pads **26** and **66** that are placed at the same plane as the gate line assembly and the data line assembly, respectively. The gate insulating layer **30** and the protective layer **70** together have contact holes **76** exposing the gate signal interconnection pads **26**, and the protective layer **70** only has contact holes **75** exposing the gate signal interconnection pads **66**. The subsidiary gate signal interconnection pads **86** are connected to the gate signal interconnection pads **26** and **66** through the contact holes **75** and **76**, thereby electrophysically interconnecting the gate signal interconnection lines **24** and **65**. In this structure, the contact failure due to the stepped difference is reduced while compensating for short circuits of the gate signal interconnection lines **24** and **65** and minimizing the wiring resistance. The overlying gate signal interconnection pads **66** may be extended toward the underlying gate signal interconnection pads **66**. In this case, the aforementioned effects can be obtained, and further, it can be prevented that the moisture content is introduced into the pad portions **C3** and **C4**.

The reinforcement of the pad portions **C3** and **C4** based on the double-structured pads **26** and **66** may be applied to other pad portions **C1**, **C2**, **C5** and **C6** in the same manner. The structures illustrated in FIGS. **7A** to **8B** may be selectively applied to the plurality of gate signal interconnection wires **134**.

A method for fabricating a TFT array substrate will be now described with reference to FIGS. **2** to **8B**.

A conductive layer is formed on an insulating substrate **10**, and patterned to form a gate line assembly **21**, **22** and **23**, and a gate signal interconnection line assembly **24** and **26**. Then, a gate insulating layer **30**, an amorphous silicon-based layer, and a doped amorphous silicon-based layer are sequentially deposited onto the substrate **10**. The amorphous silicon-based layer, and the doped amorphous silicon-based layer are patterned to thereby form a semiconductor pattern **41** and an ohmic contact pattern **51** over each gate electrode **22**. At this time, the semiconductor pattern may be left over the gate signal interconnection line **24**. Thereafter, a conductive layer is deposited, and patterned to thereby form a data line assembly **61** to **64**. At this time, as shown in FIGS. **7A** to **8B**, a gate signal interconnection assembly **65** and **66** may be formed together at the same plane as the data line assembly **61** to **64**. The portion of the ohmic contact pattern **51** exposed between the source and drain electrodes **62** and **63** is removed, thereby separating it into two patterns **52** and **53** while exposing the semiconductor pattern **41**. A protec-

tive layer **70** is deposited onto the substrate **10**, and patterned to thereby form contact holes **72** to **76**. Thereafter, a transparent conductive material is deposited, and patterned to thereby form pixel electrodes **80**, subsidiary gate pads **83**, subsidiary data pads **84**, and subsidiary gate signal interconnection pads **86**.

Although the semiconductor pattern **41**, and the data line assembly **61** to **64** are formed through different processing steps, they may be formed through one etching process. In such a process, a mask partially differentiated in light transmission is used to form photoresist patterns having different thickness. The semiconductor layer **41**, and the data line assembly **61** to **64** are patterned together using the above mask as etching mask. In the patterning process, the photoresist pattern of a middle thickness is positioned over the channel portion between the source and drain electrodes **62** and **63**, and the photoresist pattern with a large thickness positioned over the area where the data line assembly **61** to **64** are formed. In the resulting structure, ohmic contact patterns and semiconductor patterns are formed under the data line assembly **61** through **64**, and the gate signal interconnection line assembly **65** and **66**. The ohmic contact patterns **52** and **53** are formed along the shape of the data line assembly **61** to **64**, and the gate signal interconnection line assembly **65** and **66**. The semiconductor pattern **41** is also formed along the shape of the data line assembly **61** to **64**, and the gate signal interconnection line assembly **65** and **66** except for the channel portion between the source and drain electrodes **62** and **63**.

As described above, the contact portions are covered by leads, and the stepped difference at the contact portions is minimized. The gate signal interconnection line assembly is established to have a double-lined structure. This prevents short circuits of the wiring lines while keeping a moisture-free state, thereby obtaining good contact characteristics.

While the present invention has been described in detail with reference to the preferred embodiments, those skilled in the art will appreciate that various modifications and substitutions can be made thereto without departing from the spirit and scope of the present invention as set forth in the appended claims.

What is claimed is:

1. A liquid crystal display (LCD), comprising:

- a first substrate;
- a first gate signal wire formed on the first substrate and having a first gate contact pad;
- a gate insulation layer formed on the first gate signal wire and having a first opening exposing the first gate contact pad;
- a data signal wire formed on the gate insulation layer;
- a second gate signal wire formed on the gate insulation layer and having a second contact pad; and
- a protection layer formed on the data signal wire and the second gate signal wire and having a second opening aligned with the first opening and exposing the first gate contact pad and a third opening exposing the second gate contact pad.

2. The LCD of claim 1, further comprising a subsidiary gate contact pad formed on the first gate contact pad and the second gate contact pad.

3. The LCD of claim 2, further comprising a pixel electrode formed on a same plane with the subsidiary gate contact pad.

4. The LCD of claim 1, wherein the second gate signal wire is formed on a same plane with the data signal wire.

**9**

5. The LCD of claim 1, further comprising:  
a second substrate; and  
a signal lead formed on the second substrate and electrically connected to the first gate contact pad and the second gate contact pad.
6. The LCD of claim 5, further comprising a plurality of conductive particles formed between the first gate contact

**10**

- pad and the signal lead and between the second gate contact pad and the signal lead.
7. The LCD of claim 5, further comprising an adhesive layer formed between the first substrate and second substrate.

\* \* \* \* \*

专利名称(译)	液晶显示器		
公开(公告)号	<a href="#">US7170570</a>	公开(公告)日	2007-01-30
申请号	US10/851642	申请日	2004-05-24
[标]申请(专利权)人(译)	金东GYU 金相SOO 李相旭		
申请(专利权)人(译)	金东GYU 金相洙 李相旭		
当前申请(专利权)人(译)	SAMSUNG ELECTRONICS CO. , LTD.		
[标]发明人	KIM DONG GYU KIM SANG SOO LEE SANG WOOK		
发明人	KIM, DONG-GYU KIM, SANG-SOO LEE, SANG-WOOK		
IPC分类号	G02F1/136 G02F1/1333 G02F1/13 G02F1/1343 G02F1/1345 G02F1/1362 G09F9/30		
CPC分类号	G02F1/1345 G02F1/136286 G02F1/13458 G02F1/13452		
助理审查员(译)	CHUNG , DAVID		
优先权	1020000043508 2000-07-27 KR		
其他公开文献	US20050007510A1		
外部链接	<a href="#">Espacenet</a> <a href="#">USPTO</a>		

摘要(译)

液晶显示器包括绝缘基板，形成在基板上以限定像素区域的栅极和数据线，或者统称为显示区域。栅极信号互连线形成在显示区域外部的基板的拐角部分处以传输栅极电信号，并且设置有栅极信号互连线以及连接到栅极信号互连线的两端的第一和第二栅极信号互连焊盘。栅极绝缘层和保护层进一步形成在基板上，并设置有暴露第一和第二栅极信号互连焊盘的第一和第二接触孔。栅极和数据信号传输膜附着在基板上，并设有第一和第二栅极信号引线以及第一和第二栅极信号线。第一和第二栅极信号引线通过第一和第二接触孔连接到第一和第二栅极信号互连焊盘。第一或第二栅极信号引线至少在引线的纵向方向上完全覆盖第一或第二接触孔。

