



US008390561B2

(12) **United States Patent**  
**Lee et al.**

(10) **Patent No.:** **US 8,390,561 B2**  
(45) **Date of Patent:** **\*Mar. 5, 2013**

(54) **APPARATUS FOR DRIVING LAMP AND LIQUID CRYSTAL DISPLAY DEVICE HAVING THE SAME**

(75) Inventors: **Inn-Sung Lee**, Suwon-si (KR);  
**Moon-Shik Kang**, Seongnam-si (KR);  
**Song-Yi Han**, Seoul (KR)

(73) Assignee: **Samsung Display Co., Ltd.** (KR)

(\* ) Notice: Subject to any disclaimer, the term of this patent is extended or adjusted under 35 U.S.C. 154(b) by 2274 days.

This patent is subject to a terminal disclaimer.

(21) Appl. No.: **11/217,006**

(22) Filed: **Aug. 31, 2005**

(65) **Prior Publication Data**

US 2006/0050048 A1 Mar. 9, 2006

**Related U.S. Application Data**

(63) Continuation-in-part of application No. 10/273,837, filed on Oct. 18, 2002, now Pat. No. 6,947,024.

(30) **Foreign Application Priority Data**

Jan. 31, 2002 (KR) ..... 2002-5731

(51) **Int. Cl.**  
**G09G 3/36** (2006.01)

(52) **U.S. Cl.** ..... **345/102**

(58) **Field of Classification Search** ..... 345/211,  
345/102; 315/158, 153

See application file for complete search history.

(56) **References Cited**

**U.S. PATENT DOCUMENTS**

5,272,327	A	*	12/1993	Mitchell et al.	250/205
5,844,378	A	*	12/1998	LoCascio et al.	315/307
5,854,617	A		12/1998	Lee et al.	
6,153,987	A		11/2000	Toda et al.	
6,424,100	B1		7/2002	Kominami et al.	
6,674,250	B2	*	1/2004	Cho et al.	315/291
2002/0167811	A1	*	11/2002	Blanchard	362/318

**FOREIGN PATENT DOCUMENTS**

KR 1020010113187 A 12/2001

\* cited by examiner

*Primary Examiner* — Chanh Nguyen

*Assistant Examiner* — Tsegaye Seyoum

(74) *Attorney, Agent, or Firm* — Cantor Colburn LLP

(57) **ABSTRACT**

Disclosed is a liquid crystal display device having a lamp driving apparatus for preventing lamps from being damaged due to electric current variation among the lamps. A DC/DC converter converts an externally provided DC voltage input into a converted DC voltage signal having a predetermined voltage level. A DC/AC inverter inverts the converted DC voltage signal into an AC voltage signal to supply the inverted AC voltage signal to an input terminal of a lamp. A power controller detects electric current flowing through the lamp at an output terminal of the lamp to control the level of the inverted AC voltage signal output from the DC/AC inverter and bypasses a part of electric current applied to the input terminal of the lamp when a level of the detected electric current is higher than a predetermined threshold value. Therefore, when the level of the electric current flowing through the lamp exceeds the predetermined threshold value, the power controller bypasses the part of the electric current supplied to the lamp to the ground, thereby decreasing the amount of the electric current supplied to the lamp and preventing the lamp from being damaged.

**18 Claims, 5 Drawing Sheets**

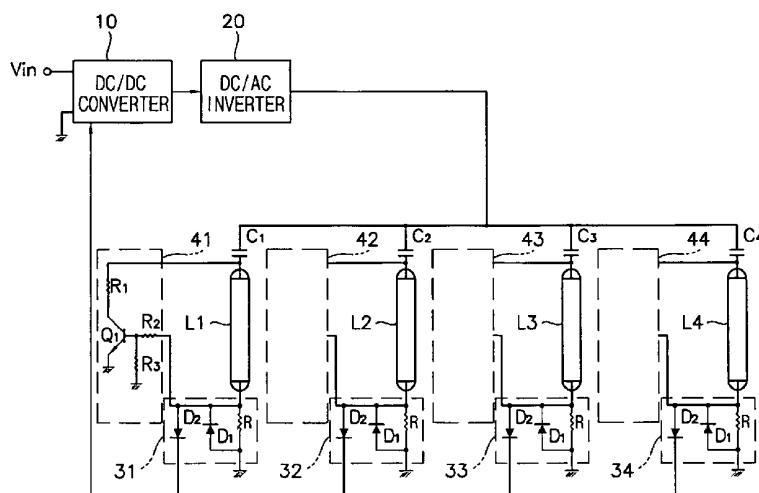


FIG. 1

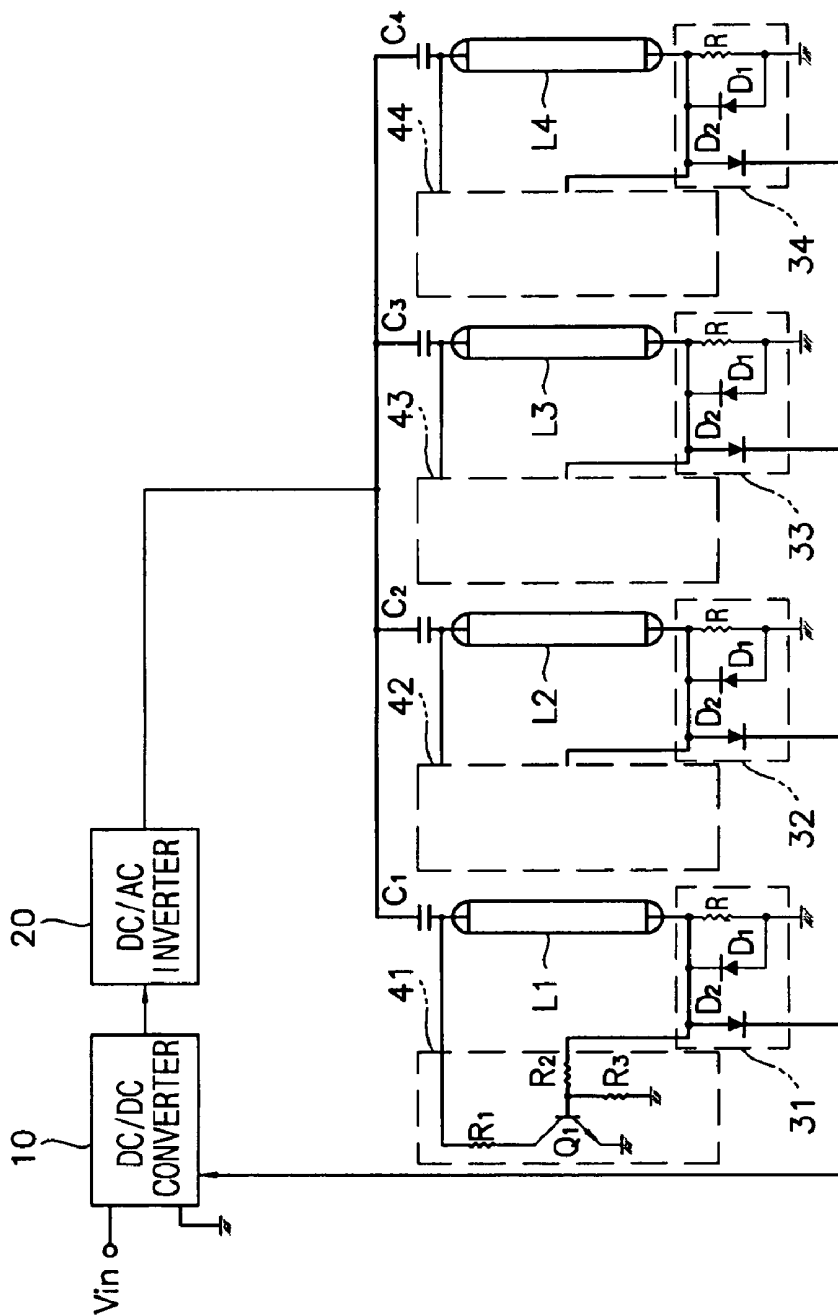


FIG. 2

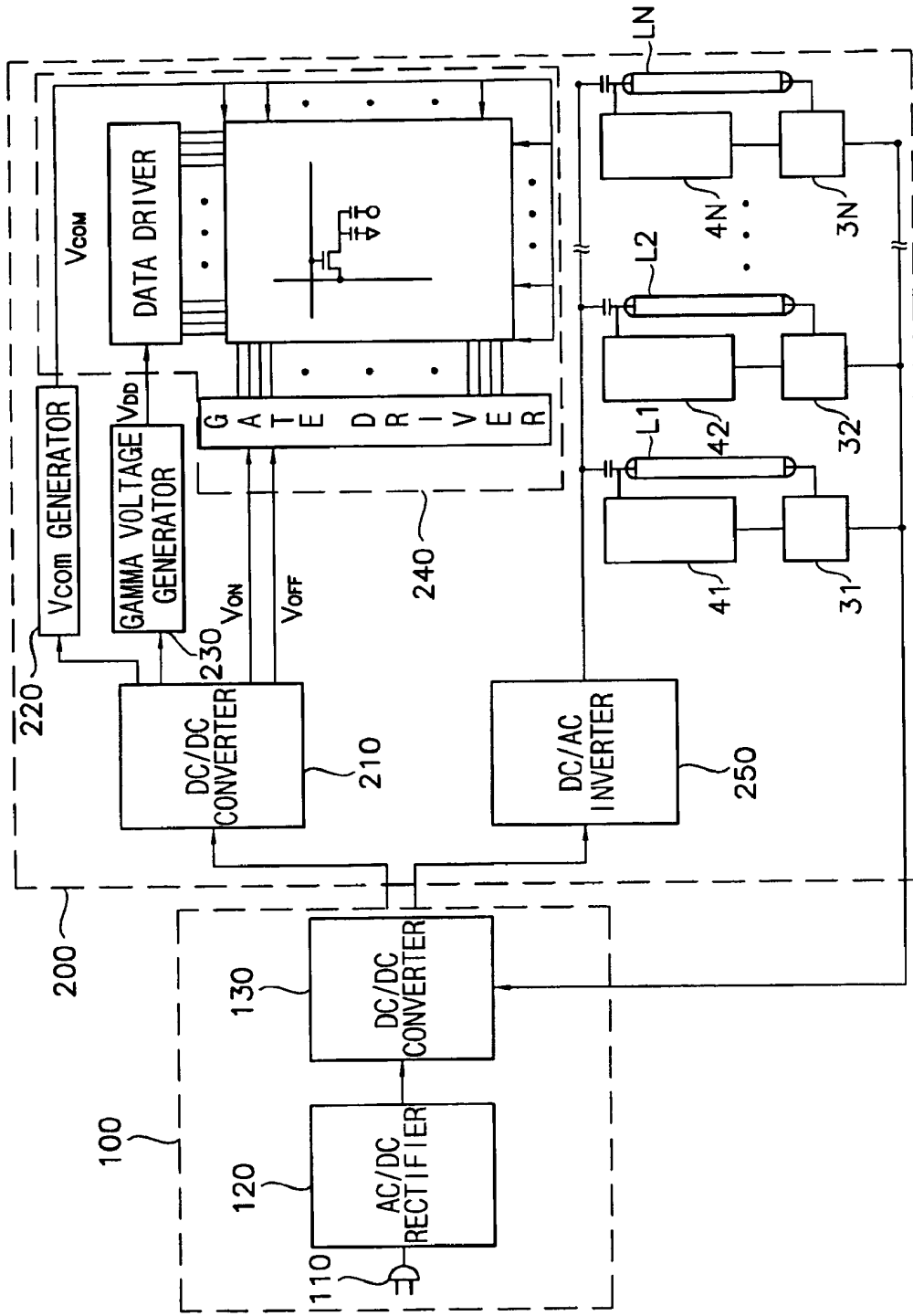


FIG. 3

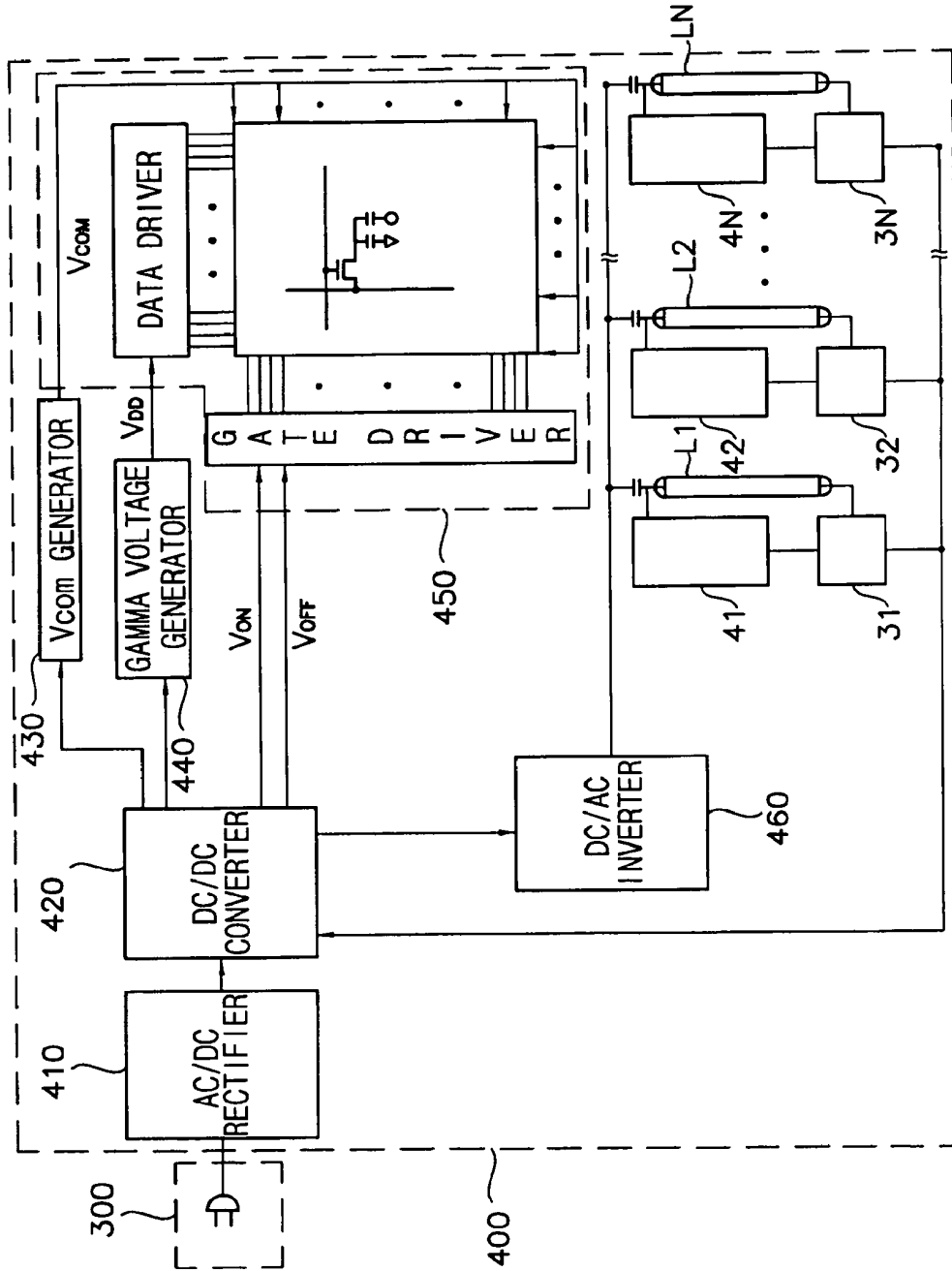


FIG. 4

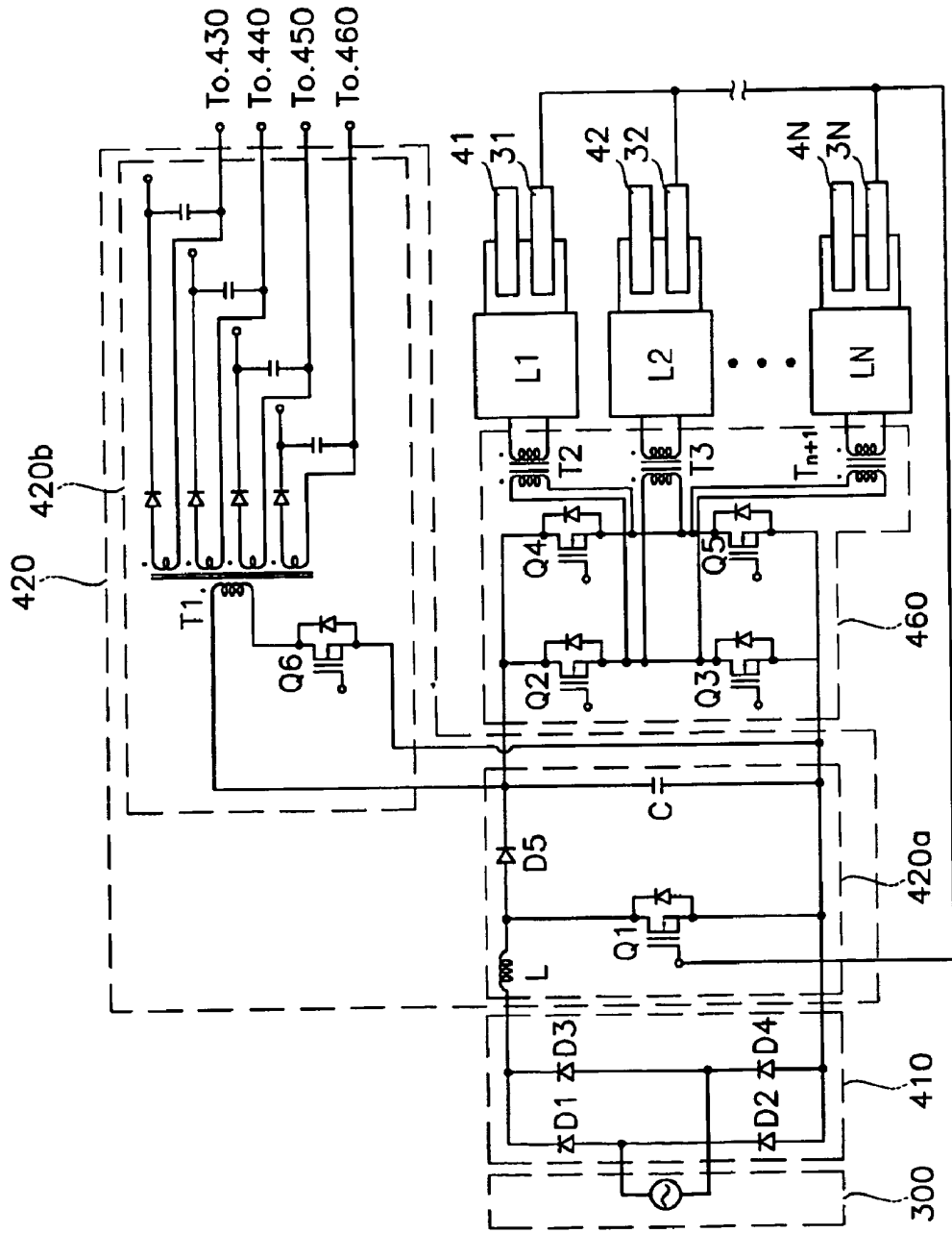
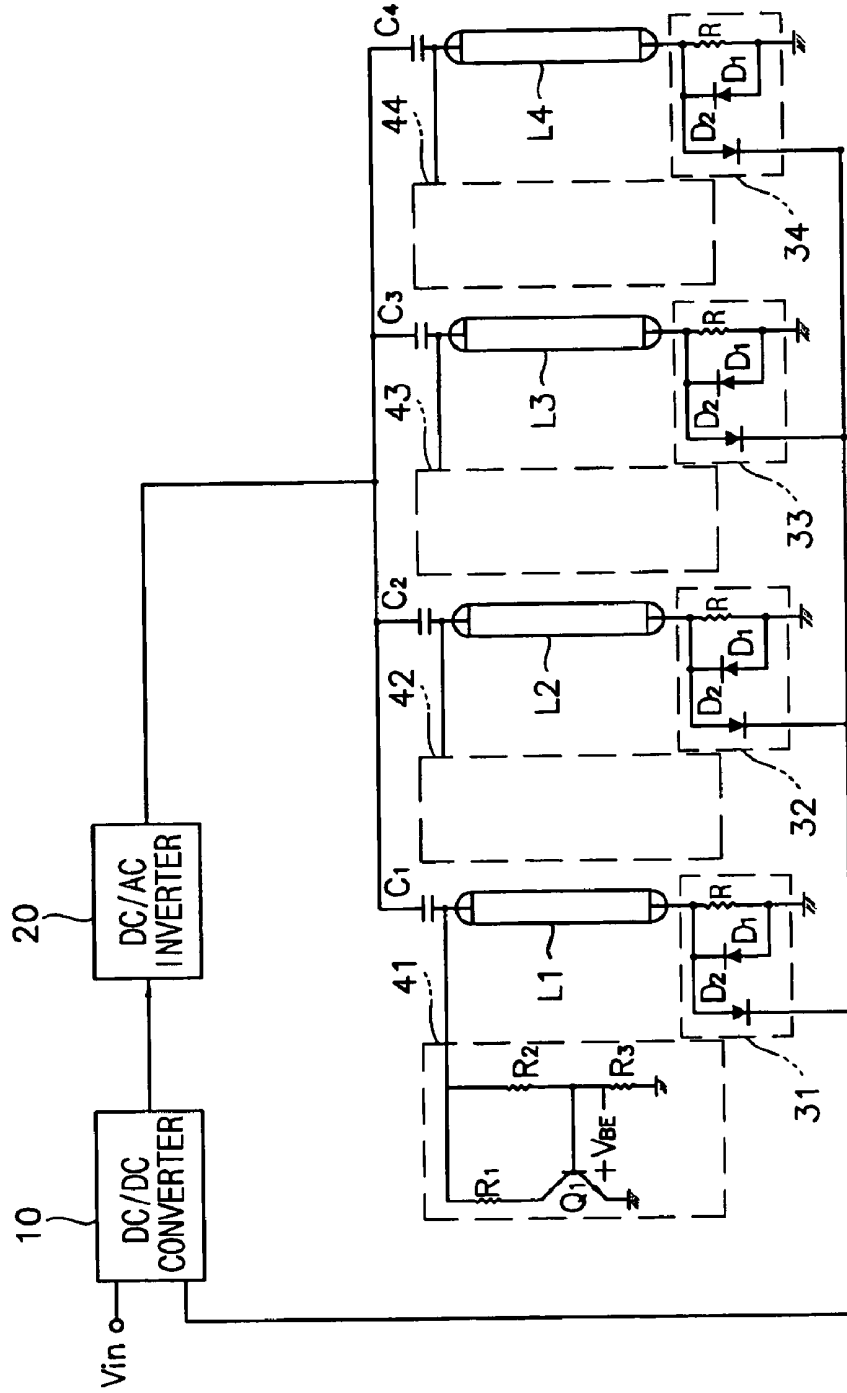


FIG. 5



**APPARATUS FOR DRIVING LAMP AND  
LIQUID CRYSTAL DISPLAY DEVICE  
HAVING THE SAME**

**CROSS REFERENCE TO RELATED  
APPLICATIONS**

This application is a continuation-in-part of application Ser. No. 10/273,837, filed Oct. 18, 2002, now U.S. Pat. No. 6,947,024 the disclosure of which is hereby incorporated herein by reference in its entirety.

**BACKGROUND OF THE INVENTION**

**1. Field of the Invention**

The present invention relates to a liquid crystal display device, and more particularly to a lamp driving apparatus for preventing damages to a lamp caused by electric current variation due to characteristics of the lamp.

**2. Description of the Related Art**

In general, the liquid crystal display (hereinafter, referred to as "LCD") is broadly classified into reflection type LCD and transmission type LCD. A reflection type LCD device displays an image by reflecting the light externally provided to an LCD panel, and a transmission type LCD device displays an image with the light generated from a backlight assembly disposed under an LCD panel.

The backlight assembly for a LCD device includes a lamp unit which emits light, a light guide plate which guides the light emitted from the lamp unit toward an LCD panel, an optical sheet such as a diffusion sheet, and prism sheet or the like which increases brightness of the light from the light guide plate.

The lamp unit includes a lamp used as a light source of the LCD device, a reflection plate that reflects the light from the lamp to increase the light efficiency of the light emitted from the lamp, and an inverter electrically connected to the lamp to apply power thereto.

Recently, LCD devices that are lighter and smaller than a CRT (cathode ray tube) type display apparatus have been developed. Such LCD devices also have functions such as full color and high resolution. Owing to such advantages, the liquid crystal display devices are widely used for computer monitors, television receivers, and other display devices.

In the LCD technology, the brightness for an LCD device is important in terms of the display quality and efficiency. Particularly, the LCD devices require multiple lamps due to enlargement of the LCD panel. In general, a large size LCD device employs a plurality of lamps disposed under a diffusion sheet, which emit the light directly illuminated onto an LCD panel.

In an edge type LCD device of which a plurality of lamps are disposed adjacent to side portions of a light guide plate, the plurality of lamps, that is, at least two lamps, are disposed at the side portions of the light guide plate in order to provide the light enough to display images on the large size LCD.

However, a plurality of lamps disposed at the side portions of a light guide plate are connected to one transformer installed in an inverter in parallel with the transformer. So, electric current variation occurs between the lamps due to characteristics of each of the lamps and a circuit part that controls only the sum of electric current flowing through the plurality of lamps.

In a case where the electric current is not uniformly applied to each of the lamps, one or more lamps receiving relatively larger amount of electric current are damaged. As a result, the

damaged lamp(s) among the plurality of lamps arranged in parallel with each other is shut down.

In order to increase the brightness of an LCD panel, each of the lamps is set and driven with electric current having a level slightly lower than that of the maximum allowable electric current. Thus, when the electric current flowing through a lamp exceeds the maximum allowable electric current, the lifetime of the lamp that receives the excessive electric current is decreased rapidly.

Also, a lamp that receives relatively larger amount of electric current becomes rapidly weakened even though the electric current does not exceed the maximum allowable electric current.

Moreover, in a case where at least three lamps are disposed at opposite side portions of the light guide plate, since the distance between each of the three lamps and a reflection plate of the lamp is different from each other, the leakage current and the electric current variations of the three lamps occur.

**BRIEF SUMMARY OF THE INVENTION**

The present invention provides a lamp driving apparatus for preventing lamps from being damaged due to variation of electric current flowing through the lamps connected in parallel with each other, and also provides a liquid crystal display having the lamp driving apparatus.

As an exemplary embodiment of the present invention, there is provided an apparatus for driving a lamp. In the apparatus, a DC/DC converter converts an externally provided DC input signal into a converted DC signal having a voltage level to. A DC/AC inverter inverts the converted DC signal into an AC signal to supply the inverted AC signal to an input terminal of a lamp. A power controller detects electric current at an output terminal of the lamp to generate a feedback signal to control the voltage level of the converted DC signal output from the DC/DC converter and bypasses a part of the inverted AC signal applied to the input terminal of the lamp when a level of the detected electric current is higher than a predetermined threshold value.

The power controller includes an electric current detecting part for detecting the electric current at the output terminal of the lamp, the electric current detecting part having a first terminal connected to the output terminal of the lamp, a second terminal outputting the feedback signal to the DC/DC converter, and a third terminal outputting a detecting signal indicating that the detected electric current level is higher than the predetermined threshold value; and a bypassing part for bypassing the part of the inverted AC signal supplied to the input terminal of the lamp in response to the detecting signal from the electric current detecting part.

The bypassing part has a first resistor connected between the input terminal of the lamp and ground; and a switching part connected between the input terminal of the lamp and the ground, for bypassing the part of the inverted AC signal supplied to the input terminal of the lamp to the ground in response to the detecting signal from the electric current detecting part.

The bypassing part further includes a second resistor of which a first terminal is connected to the electric current detecting part and a second terminal is connected to the switching part. The bypassing part may further include a third resistor of which a first terminal is connected to the second terminal of the second resistor and a second terminal is connected to the ground.

The switching part includes a transistor having an electric conduction path between the input terminal of the lamp and

the ground, which is turned on or off in response to the detecting signal from the electric current detecting part.

As another exemplary embodiment of the present invention, there is provided a liquid crystal display device in which a liquid crystal display panel has a plurality of data lines, a plurality of gate lines, switching devices respectively connected to the plurality of data and gate lines, and a liquid crystal device connected to the switching devices, for displaying an image. A plurality of lamps provide the liquid crystal display panel with light, and a lamp driving part converts a voltage level of an externally supplied input signal to provide a converted signal to the plurality of lamps, and bypasses an excessive part of the converted signal provided to the plurality of lamps to prevent the plurality of lamps from being damaged by the excessive part.

The lamp driving part includes a power converter for converting a DC signal into an AC signal to supply the converted AC signal to an input terminal of each of the plurality of lamps; and a power controller for detecting electric current at an output terminal of a lamp to control the level of the converted AC signal output from the power converter and bypassing a part of the converted AC signal applied to the input terminal of the lamp when a level of the detected electric current is higher than a predetermined threshold value.

The power controller has an electric current detecting part for detecting the electric current at the output terminal of the lamp, the electric current detecting part having a first terminal connected to the output terminal of the lamp, a second terminal outputting a feedback signal to the DC/DC converter to control the converted voltage level of the converted DC signal, and a third terminal outputting a detecting signal indicating that the detected electric current level is higher than the predetermined threshold value; and a bypassing part for bypassing the part of the inverted AC signal supplied to the input terminal of the lamp in response to the detecting signal from the electric current detecting part.

The bypassing part includes a first resistor of which one terminal is connected to the input terminal of the lamp; and a switching part for bypassing the part of the inverted AC signal supplied to the input terminal of the lamp to the ground through the first resistor in response to the detecting signal from the electric current detecting part.

The bypassing part may further include a second resistor of which a first terminal is connected to the electric current detecting part and a second terminal is connected to the switching part, and a third resistor of which a first terminal is connected to the second terminal of the second resistor and a second terminal is connected to the ground.

According to the liquid crystal display apparatus, when electric current flowing through the lamps exceeds a predetermined threshold value, a part of the electric current supplied to the lamps is bypassed to the ground, thereby decreasing the amount of the electric current supplied to the lamps and preventing the lamps from being damaged.

#### BRIEF DESCRIPTION OF THE DRAWINGS

The present invention will become more apparent by describing in detail exemplary embodiments thereof with reference to the accompanying drawings, in which:

FIG. 1 is a block diagram showing an apparatus for driving lamps of a liquid crystal display device in accordance with an embodiment of the present invention;

FIG. 2 is a block diagram showing a liquid crystal display device that adopts an external type DC power circuit according to the present invention;

FIG. 3 is a block diagram showing a liquid crystal display that adopts an internal type DC power circuit according to the present invention; and

FIG. 4 is a circuit diagram for illustrating the liquid crystal display device shown in FIG. 3.

#### DETAILED DESCRIPTION OF INVENTION

Reference will now be made in detail to the exemplary embodiments of the present invention, examples of which are illustrated in the accompanying drawings.

FIG. 1 is a block diagram showing an apparatus for driving one or more lamps of a liquid crystal display in accordance with the present invention.

Referring to FIG. 1, the lamp driving apparatus includes a DC/DC converter 10, a DC/AC inverter 20, a plurality of electric current detecting parts 31, 32, 33 and 34 and a plurality of bypassing parts 41, 42, 43 and 44, and supplies predetermined electric current to a plurality of lamps L1, L2, L3 and L4. When electric current flowing through each of the lamps L1, L2, L3 and L4 exceeds a predetermined threshold value, the electric current detecting parts 31, 32, 33 and 34 and the bypassing parts 41, 42, 43 and 44 respectively connected to the electric current detecting parts 31, 32, 33 and 34 operate as a power consumption part, so that a part of the electric current supplied to the lamps L1, L2, L3 and L4 is consumed by the electric current detecting parts 31, 32, 33 and 34 and the bypassing parts 41, 42, 43 and 44.

The DC/DC converter 10 boosts direct current (hereinafter, referred to as "DC") externally provided and supplies the boosted DC to the DC/AC inverter 20, and the DC/AC inverter 20 inverts the boosted DC into alternating current (AC) and supplies the inverted AC to the plurality of lamps.

An input terminal of each of the plurality of lamps L1, L2, L3 and L4 is connected to corresponding one of capacitors C1, C2, C3 and C4. The plurality of lamps L1, L2, L3 and L4 emit light by receiving through the respective capacitors C1, C2, C3 and C4 the AC inverted from the boosted DC by the DC/AC inverter 20. A cold cathode fluorescent lamp (hereinafter, referred to as a "CCFL") is used for each of the lamps L1, L2, L3 and L4 in this embodiment. In general, lifetime of a CCFL is longer than that of a hot cathode fluorescent lamp (hereinafter, referred to as a "HCFL") because the cathode of a CCFL is less damaged than that of an HCFL is, by heat generated in the light emitting operation of the lamps L1, L2, L3 and L4. In addition, since the cathode of a CCFL can be made in a size smaller than that of a HCFL and the amount of heat generated from the cathode of a CCFL is smaller than that from an HCFL cathode, a CCFL may have a smaller bulb diameter than that of an HCFL. Accordingly, the CCFLs are widely used for a direct lighting type liquid crystal display apparatus.

Each of the electric current detecting parts 31, 32, 33 and 34 is connected to an output terminal of corresponding one of the lamps L1, L2, L3 and L4, and detects the electric current flowing through the corresponding one of the lamps L1, L2, L3 and L4. Also, the electric current detecting parts 31, 32, 33 and 34 provide the detected electric current to the bypassing parts 41, 42, 43 and 44 and feedback the electric current to the DC/DC converter 10.

For example, a first electric current detecting part 31 includes a resistor R connected between an output terminal of a first lamp L1 and ground in series, a first diode D1 of which cathode is connected to the output terminal of the first lamp L1 and anode is connected to the ground, and a second diode



D2 of which cathode is connected to the DC/DC converter 10 and anode is connected to the output terminal of the first lamp L1.

In operation, the first electric current detecting part 31 detects the electric current output from the output terminal of the first lamp L1 and provides the DC/DC converter 10 with a signal indicating the level of the detected electric current, so that the DC/DC converter 10 controls a voltage boost range based on the detected electric current. If the level of the detected electric current exceeds a predetermined threshold value, the first electric current detecting part 31 generates an excess detecting signal to activate the first bypassing part 41. The DC/DC converter 10 controls the level of the output current in response to the signal from the first electric current detecting part 31, thereby supplying via the DC/AC inverter 20 a boosted current to the first to fourth lamps L1, L2, L3 and L4 through first to fourth capacitors C1, C2, C3 and C4, respectively.

Each of the first to fourth bypassing parts 41, 42, 43 and 44 is turned on or off in response to the excess detecting signal from corresponding one of the first to fourth electric current detecting parts 31, 32, 33 and 34, so that a part of the electric current supplied to the respective lamps L1, L2, L3 and L4 is selectively bypassed to the ground.

For example, the first bypassing part 41 includes a first resistor R1 connected to the input terminal of the first lamp L1, a second resistor R2 connected to the first electric current detecting part 31, a third resistor R3 connected between the second resistor R2 and the ground, a first transistor Q1 of which emitter is connected to the ground, base is connected to the second resistor R2 and collector is connected to the first resistor R1. When the excess detecting signal is input from the first electric current detecting part 31 to the first bypassing part 41 through the second resistor R2, the first transistor Q1 is turned on so that a part of the electric current supplied to the first lamp L1 is bypassed to the ground through the first resistor R1 and first transistor Q1. The excess detecting signal has a level corresponding to a threshold voltage for turning on the first transistor Q1.

In other word, if the first transistor Q1 of the first bypassing part 41 is maintained in a turned-off state, the electric current from the DC/AC inverter 20 is supplied to the first lamp L1. When the electric current at the output terminal of the first lamp L1 is detected exceeding a predetermined threshold value, the first transistor Q1 is turned-on in response to the excess detecting signal, so that a part of the electric current supplied to the first lamp L1 is pulled down to the ground by means of the first resistor R1. A range of the pull-down varies in association with resistance of the first resistor R1.

In general, a power supply system for an LCD device pulls up a voltage level of input current supplied to lamps for the LCD device in case that a voltage level of current flowing through lamps is lower than a predetermined level, and pulls down the voltage level of input current supplied to the lamps in case that the voltage level of current flowing through the lamps is higher than the predetermined level. Thus, it is a disadvantage of such a power supply system that the level of input current supplied to all the lamps is controlled based on the level of the electric current flowing through only one lamp.

In contrast, in this embodiment of the present invention, the first to fourth bypassing parts 41, 42, 43 and 44 are connected to the first to fourth lamps L1, L2, L3 and L4, respectively, so that the amount of the electric current supplied to each of the first to fourth lamps L1, L2, L3 and L4 is controlled by bypassing a part of the electric current to the ground. That is, the electric current supplied to the first to fourth lamps L1, L2,

L3 and L4 is respectively controlled by the first to fourth bypassing parts 41, 42, 43 and 44, thereby preventing the first to fourth lamps L1, L2, L3 and L4 from being damaged.

As described above in this embodiment, the four lamps are arranged in parallel with each other. However, multiple lamps less or more than four may also be arranged in parallel in a like manner. Also, the lamp driving apparatus of the present invention may employ a plurality of DC/DC converters and DC/AC inverters in which a pair of DC/DC converter and DC/AC inverter drives a certain number of the lamps. In this case, the lamps for an LCD device are divided into units each having a certain number of lamps, and one of the DC/DC converters and one of the DC/AC inverters are connected with corresponding one of the units. Moreover, the lamp driving apparatus of the present invention can be applied to an LCD device with a backlight assembly that adopts an edge type light guide plate in which the lamps are disposed adjacent to the side portions of the light guide plate.

FIG. 2 is a block diagram showing a liquid crystal display device according to the present invention in which an external type DC power circuit is employed.

Referring to FIG. 2, the liquid crystal display includes an external DC supply part 100 and an LCD module part 200. The external DC supply part 100 includes an input plug 110, an AC/DC rectifier 120, and a first DC/DC converter 130. The external DC supply part 100 converts AC externally supplied through the input plug 110 into DC and supplies the converted DC to the LCD module part 200.

The AC/DC rectifier 120 has a function of the power factor correction (hereinafter, referred to as "PFC"). In particular, the AC/DC rectifier 120 rectifies a general-purpose AC voltage signal having, for example, 100 to 240 volts supplied through the plug 110 into a DC voltage signal and supplies the converted DC voltage signal to the first DC/DC converter 130. For example, a diode rectifier or an active PWM (pulse width modulation) rectifier is used as the AC/DC rectifier 120.

The first DC/DC converter 130 pulls up or down the level of the converted DC voltage signal from the AC/DC rectifier 120 and supplies the converted DC voltage to the LCD module part 200. The pull-up or -down of a level of the converted DC voltage is determined based on electric current flowing through lamps of a backlight assembly disposed under the LCD panel.

The LCD module part 200 includes a second DC/DC converter 210, a common electrode voltage generator 220, a gamma voltage generator 230, an LCD panel part 240, a DC/AC inverter 250, a plurality of lamps L1-LN, a plurality of electric current detecting parts 31-3N each connected to corresponding one of the lamps L1-LN, and a plurality of bypassing parts 41-4N each connected to corresponding one of the lamps L1-LN. The LCD module part 200 receives the DC signal from the external DC supply part 100 and displays an image based on data from a graphic controller (not shown).

Particularly, the second DC/DC converter 210 converts the DC signal from the first DC/DC converter 130 into DC signals having different levels with each other and provides the DC signals to the common electrode voltage generator 220, the gamma voltage generator 230 and the LCD panel part 240, respectively. For example, a boost converter, a buck converter, a half-bridge converter, a fly-back converter, a full-bridge converter, a push-full converter, a forward converter, or the like can be used as the second DC/DC converter 210.

The common electrode voltage generator 220 generates a common electrode voltage  $V_{com}$  in response to a DC signal from the second DC/DC converter 210 and supplies the common electrode voltage  $V_{com}$  to the LCD panel part 240. The DC signal supplied from the second DC/DC converter 210 to

the common electrode voltage generator **220** serves as a power source signal for driving the common electrode voltage generator **220**.

The gamma voltage generator **230** generates a gamma voltage  $V_{DD}$  in response to a DC signal from the second DC/DC converter **210** and provides the gamma voltage  $V_{DD}$  to the LCD panel part **240**. The DC signal supplied from the second DC/DC converter **210** to the gamma voltage generator **230** serves as a reference power source of the gamma voltage generator **230**. The common electrode voltage generator **220** and the gamma voltage generator **230** may also be integrally formed in the LCD panel part **240**.

The LCD panel part **240** includes a data driver, a gate driver and an LCD panel. The LCD panel part **240** displays images based on data externally provided through a graphic controller (not shown) in response to a timing signal from a timing controller (not shown).

In the liquid crystal display that adopts the external DC supply part formed outside the LCD module part as shown in FIG. **2**, when the level of the electric current flowing through the plurality of lamps L1-LN exceeds a predetermined value (e.g., a level of a reference current), the external DC supply part controls the level of the electric current supplied to the plurality of lamps L1-LN and a part of the electric current supplied to the plurality of lamps L1-LN is bypassed to the ground through the bypassing parts **41-4N**, thereby preventing the plurality of lamps L1-LN from being damaged.

Also, the above-described lamp driving apparatus can be applied to a liquid crystal display device in which an internal type DC supply part is formed within an LCD module part.

FIG. **3** is a block diagram showing a liquid crystal display that adopts an internal type DC supply part according to the present invention.

Referring to FIG. **3**, the liquid crystal display includes an AC input part **300** and an LCD module part **400**. The AC input part **300** directly supplies the general-purpose AC voltage having, for example, 100 to 240 volts to the LCD module part **400**. The AC input part **300** can supply the general-purpose AC to the LCD module part **400** by plugging a plug into a socket.

The LCD module part **400** includes an AC/DC rectifier **410**, a DC/DC converter **420**, a common electrode voltage generator **430**, a gamma voltage generator **440**, an LCD panel part **450**, a DC/AC inverter **460**, a plurality of lamps L1-LN, a plurality of electric current detecting parts **31-3N** connected to corresponding one of the lamps L1-LN, and a plurality of bypassing parts **41-4N** connected to corresponding one of the lamps L1-LN. The LCD module part **400** receives the general-purpose AC voltage from the AC input part **300** and displays an image based on data from a graphic controller (not shown).

Particularly, the AC/DC rectifier **410** rectifies the general-purpose AC voltage having, for example, 100 to 240 volts supplied through the AC input part **300** into a DC voltage and supplies the rectified DC voltage to the DC/DC converter **420**. For example, a diode rectifier or an active PWM rectifier is used as the AC/DC rectifier **410**.

The DC/DC converter **420** converts the rectified DC voltage from the AC/DC rectifier **410** into DC signals having different levels with each other and provides the DC signals to the common electrode voltage generator **430**, the gamma voltage generator **440** and the LCD panel part **450**, respectively. For example, a boost converter, a buck converter, a half-bridge converter, a fly-back converter, a full-bridge converter, a push-full converter, a forward converter, or the like can be used as the DC/DC converter **420**.

The common electrode voltage generator **430** generates a common electrode voltage  $V_{com}$  in response to a DC signal from the DC/DC converter **420** and supplies the common electrode voltage  $V_{com}$  to the LCD panel part **450**. The DC signal supplied from the DC/DC converter **420** to the common electrode voltage generator **430** serves as a power source signal for driving the common electrode voltage generator **430**.

The gamma voltage generator **440** generates a gamma voltage  $V_{DD}$  in response to the DC signal from the DC/DC converter **420** and provides the gamma voltage  $V_{DD}$  to the LCD panel part **450**. The DC signal supplied from the DC/DC converter **420** to the gamma voltage generator **440** serves as a reference power source of the gamma voltage generator **440**.

The common electrode voltage generator **430** and gamma voltage generator **440** may also be integrally formed in the LCD panel part **450**.

The LCD panel part **450** includes a data driver, a gate driver and an LCD panel. The LCD panel part **450** displays images based on data externally provided through a graphic controller (not shown) in response to a timing signal from a timing controller (not shown).

The DC/AC inverter **460** inverts a DC signal generated from DC/DC converter **420** into an AC signal. The AC signal output from the DC/AC inverter **460** has a high level within a range of, for example, 500 to 600 volts that is suitable to the lamps L1-LN. Any inverter operating with the high voltage within the range of, for example, 500 to 600 volts can be used as the DC/AC inverter **460**. For example, a royer inverter, a push-pull inverter, a half-bridge inverter, a full-bridge inverter, or the like may be used as the DC/AC inverter **460**.

In this embodiment, the DC/AC inverter **460** which inverts the high-voltage DC signal into the AC signal is disposed within the LCD module part **400**, so that the liquid crystal display device may employ a transformer having a coil with the number of turns smaller than that of a coil in a conventional liquid crystal display device. Moreover, the liquid crystal display device according to the present invention can employ the DC/AC inverter without a transformer. Thus, the cost for the liquid crystal display device may be reduced.

The lamps L1-LN are disposed under the LCD panel or adjacent to side portions of the LCD panel and illuminates light to the LCD panel in response to the AC voltage.

The electric current detecting parts **31-3N** detect the electric current flowing through the lamps L1-LN, respectively. When the level of the detected electric current exceeds a predetermined threshold value (e.g., a level of a reference electric current), corresponding one or more of the electric current detecting parts **31-3N** each generate an excess detecting signal to the DC/DC converter **420** to control the level of the DC supplied to the DC/AC inverter **460** and activates the bypassing parts **41-4N** to reduce the level of the AC supplied to the lamps L1-LN.

FIG. **4** is a circuit diagram for illustrating the lamp driving apparatus shown in FIG. **3**.

Referring to FIGS. **3** and **4**, the AC input part **300** supplies the general-purpose voltage having, for example, 100 to 240 volts to the AC/DC rectifier **410**. The AC/DC rectifier **410** (e.g., AC/DC diode rectifier) includes, for example, two-diode parts each having two diodes connected in series. The two-diode parts are connected in parallel with each other. The AC/DC diode rectifier **410** rectifies the general-purpose voltage input from the AC input part **300** and supplies the rectified DC to a first DC/DC converter **420a**.

The first DC/DC converter **420a** is a boost DC/DC converter having the PFC function. The first DC/DC converter **420a** pulls up or down the rectified DC input from the AC/DC

diode rectifier **410** and supplies the pulled-up/down DC to a second DC/DC converter **420b** and the DC/AC inverter **460**.

In particular, the first DC/DC converter **420a** includes, for example, an inductor L, a first metal-oxide semiconductor field effect transistor (hereinafter, referred to as a “MOSFET”) **Q1**, a diode **D5** and a capacitor C. A drain of the first MOSFET **Q1** is connected to a first terminal of the AC/DC diode rectifier **410** through the inductor L, a source of the MOSFET **Q1** is connected to a second terminal of the AC/DC diode rectifier **410**, and a gate of the first MOSFET **Q1** is connected to the electric current detecting parts **31-3N**. The inductor L is connected between the first terminal of the AC/DC diode rectifier **410** and the drain of the first MOSFET **Q1**. The capacitor C is connected between the diode **D5** and the source of the MOSFET **Q1**.

When positive current having a predetermined level is provided from one or more of the electric current detecting parts **31-3N** to the gate of the first MOSFET **Q1**, the first MOSFET **Q1** is turned on, thereby pulling down the level of the voltage applied to the second DC/DC converter **420b** and/or the DC/AC inverter **460**.

The second DC/DC converter **420b** is, for example, a fly-back converter having a multiple-output function and outputs multiple voltages in response to the voltage from the first DC/DC converter **420a**. Particularly, the second DC/DC converter **420b** includes a sixth MOSFET **Q6** having a diode which is connected between the source and drain of the sixth MOSFET **Q6** and turned on in response to a reversed bias, and a first transformer **T1** having a primary coil which generates a main power, a magnetic core and secondary coils which generate multiple sub-powers. In the second DC/DC converter **420b**, the DC input from the first DC/DC converter **420a** is provided to the primary coil and to the secondary coils through the magnetic core.

A DC output through the primary coil is used for data driving operation which demands relatively high power, and the DC outputs through the secondary coils are applied to a scan driver. The DC outputs through the secondary coils are used for signals such as a gate on/off voltage  $V_{on}/V_{off}$  for controlling TFT switching devices, a reference voltage of the common electrode voltage  $V_{com}$  applied to the common electrode line, and a reference voltage for generating the gamma voltage.

The DC/AC inverter **460** includes a second to fifth MOSFETs **Q2**, **Q3**, **Q4** and **Q5** and transformers **T2**, **T3**, . . . , and **Tn+1** and outputs a voltage for CCFL backlight. The second to fifth MOSFETs **Q2**, **Q3**, **Q4** and **Q5** each have a source and a drain connected with a diode therebetween.

In particular, the DC/AC inverter **460** includes the second MOSFET **Q2** connected to the capacitor C through the drain thereof, the third MOSFET **Q3** connected to the source of the second MOSFET **Q2** through the drain thereof and connected to the capacitor C through the source thereof, the fourth MOSFET **Q4** connected to the drain of the second MOSFET **Q2**, and the fifth MOSFET **Q5** connected to the source of the fourth MOSFET **Q4** through the drain thereof and connected to the source of the third MOSFET **Q3** through the source thereof. A common node of the second and third MOSFETs **Q2**, **Q3**, i.e., the source of the second MOSFET **Q2** and the drain of the third MOSFET **Q3**, is connected to one end of each primary coil of the respective transformers **T2-Tn+1**, and a common node of the fourth and fifth MOSFETs **Q4**, **Q5**, i.e., the source of the fourth MOSFET **Q4** and the drain of the fifth MOSFET **Q5**, is connected to the other end of each primary coil of the respective transformers **T2-Tn+1**. The CCFLs are each connected to corresponding one of the secondary coils of the transformers **T2-Tn+1**. The DC/AC

inverter **460** pulls up the DC input provided to the primary coils and provides the pulled-up DC to the lamps such as the CCFLs.

The electric current flowing through the lamps is detected by means of the electric current detecting parts **31-3N**. When the level of the electric current exceeds a predetermined threshold value (e.g., the level of a reference electric current), the electric current detecting parts **31-3N** activate the bypassing parts **41-4N** to bypass a part of the electric current supplied to the lamps **L1-LN**. Also, the electric current detecting parts **31-3N** output a positive signal having a predetermined level to the gate of the first MOSFET **Q1**, thereby decreasing the DC electric current supplied to the lamps **L1**.

According to the above-mentioned lamp driving apparatus and liquid crystal display having the same of the present invention, the DC electric current flowing through the lamps is detected by the electric current detecting parts. When the level of the DC electric current flowing through the lamps exceeds a predetermined threshold value, the bypassing parts each bypass a part of the DC electric current supplied to the lamps to the ground, thereby decreasing the amount of the DC electric current supplied to the lamps and preventing the lamps from being damaged.

Further, the lamp driving apparatus according to the present invention is easily applied not only to the liquid crystal display that adopts the external type DC power circuit such as a mobile computer, but also to the liquid crystal display having the internal type DC power circuit internally adopted into a monitor.

This invention has been described above with reference to the aforementioned embodiments. It is evident, however, that many alternative modifications and variations will be apparent to those having skills in the art in light of the foregoing description. Accordingly, the present invention embraces all such alternative modifications and variations as fall within the spirit and scope of the appended claims.

What is claimed is:

1. An apparatus for driving a plurality of lamps connected to each other in parallel, the apparatus comprising:
  - a DC/DC converter for converting a DC input signal into a converted DC signal having a voltage level;
  - a DC/AC inverter for inverting the converted DC signal into an AC signal to supply the inverted AC signal to an input terminal of each of the lamps connected to each other in parallel; and
  - a power controller for detecting electric current at an output terminal of each of the lamps connected to each other in parallel to generate a feedback signal to control the voltage level of the converted DC signal output from the DC/DC converter and bypassing a part of the inverted AC signal applied to the input terminal of the lamps when a level of the detected electric current is higher than a predetermined threshold value.
2. The apparatus for driving a plurality of lamps of claim 1, wherein the power controller comprises:
  - an electric current detecting part for detecting the electric current at the output terminals of the lamps, the electric current detecting part having a first terminal connected to the output terminals of the lamps, a second terminal outputting the feedback signal to the DC/DC converter, and a third terminal outputting a detecting signal indicating that the detected electric current level is higher than the predetermined threshold value; and
  - a bypassing part for bypassing the part of the inverted AC signal supplied to the input terminals of the lamps in response to the detecting signal from the electric current detecting part.

3. The apparatus for driving a plurality of lamps of claim 2, wherein the bypassing part comprises a switching part connected between the input terminals of the lamps and ground, for bypassing the part of the inverted AC signal supplied to the input terminals of the lamps to the ground in response to the detecting signal from the electric current detecting part.

4. The apparatus for driving a plurality of lamps of claim 3, wherein the bypassing part further comprises a first resistor of which a first terminal is connected to the electric current detecting part and a second terminal is connected to the switching part.

5. The apparatus for driving a plurality of lamps of claim 4, wherein the bypassing part further comprises a second resistor of which a first terminal is connected to the second terminal of the first resistor and a second terminal is connected to the ground.

6. The apparatus for driving a plurality of lamps of claim 3, wherein the switching part includes a transistor having an electric conduction path between the input terminals of the lamps and the ground, the transistor being turned on or off in response to the detecting signal from the electric current detecting part.

7. The apparatus for driving a plurality of lamps of claim 6, wherein the switching part further includes a first resistor connected between the input terminals of the lamps and the ground to form the conduction pass, and

the bypassing part further comprises a second resistor, the second resistor having a first terminal connected with the input terminals of the lamps and a second terminal is connected to the ground.

8. The apparatus for driving a plurality of lamps of claim 2, wherein the electric current detecting part comprises:

- a resistor connected between the output terminal of the lamp and the ground;
- a first diode connected between the output terminal of the lamp and the ground in parallel with the resistor; and
- a second diode connected between the output terminal of the lamp and the third terminal of the electric current detecting part.

9. A liquid crystal display comprising:  
 a liquid crystal display panel for displaying an image;  
 a plurality of lamps connected in parallel for providing light to the liquid crystal display panel; and  
 a lamp driving part for converting a voltage level of an externally supplied input signal to provide a converted signal to the plurality of lamps, and bypassing an excessive part of the converted signal provided to the plurality of lamps to prevent the plurality of lamps from being damaged by the excessive part,

wherein the lamp driving part includes:  
 a power converter for converting a DC signal into an AC signal to supply the converted AC signal to an input terminal of each of the plurality of lamps; and  
 a power controller for detecting electric current at an output terminal of each of the plurality of lamps and bypassing a part of the converted AC signal applied to the input terminal of a lamp of the plurality of lamps

when a level of the detected electric current is higher than a predetermined threshold value,  
 wherein the power controller is provided for each of the plurality of lamps.

10. The liquid crystal display of claim 9, wherein the plurality of lamps are disposed under the liquid crystal display panel.

11. The liquid crystal display of claim 9, wherein the plurality of lamps are disposed adjacent to a side portion of the liquid crystal display panel.

12. The liquid crystal display of claim 9, wherein the power converter comprises:

- a DC/DC converter for converting the DC signal into a converted DC signal with a converted voltage level; and
- a DC/AC inverter for inverting the converted DC signal into the converted AC signal to be supplied to the input terminal of each of the lamps.

13. The liquid crystal display of claim 12, wherein the power controller comprises:

- an electric current detecting part for detecting the electric current at the output terminal of each lamp of the plurality of lamps, the electric current detecting part having a first terminal connected to the output terminal of the lamp, a second terminal outputting a feedback signal to the DC/DC converter to control the converted voltage level of the converted DC signal, and a third terminal outputting a detecting signal indicating that the detected electric current level is higher than the predetermined threshold value; and
- a bypassing part for bypassing the part of the inverted AC signal supplying to the input terminal of each lamp of the plurality of lamps in response to the detecting signal from the electric current detecting part.

14. The liquid crystal display of claim 13, wherein the bypassing part comprises a switching part connected between the input terminal of each lamp and ground, for bypassing the part of the inverted AC signal supplied to the input terminal of each lamp to the ground in response to the detecting signal from the electric current detecting part.

15. The liquid crystal display of claim 14, wherein the bypassing part further comprises a first resistor of which a first terminal is connected to the electric current detecting part and a second terminal is connected to the switching part.

16. The liquid crystal display of claim 15, wherein the bypassing part further comprises a second resistor of which a first terminal is connected to the second terminal of the first resistor and a second terminal is connected to the ground.

17. The liquid crystal display of claim 14, wherein the switching part includes a transistor having an electric conduction path between the input terminal of each lamp and the ground, the transistor being turned on or off in response to the detecting signal from the electric current detecting part.

18. The apparatus for driving lamp of claim 17, wherein the switching part further includes a first resistor connected between the input terminal of each lamp and the ground to form the conduction pass.

\* \* \* \* \*

专利名称(译)	用于驱动灯的装置和具有该装置的液晶显示装置		
公开(公告)号	<a href="#">US8390561</a>	公开(公告)日	2013-03-05
申请号	US11/217006	申请日	2005-08-31
[标]申请(专利权)人(译)	LEE INN SUNG 康MOON植 韩松伊		
申请(专利权)人(译)	李INN-SUNG 康MOON植 韩松伊		
当前申请(专利权)人(译)	三星DISPLAY CO. , LTD.		
[标]发明人	LEE INN SUNG KANG MOON SHIK HAN SONG YI		
发明人	LEE, INN-SUNG KANG, MOON-SHIK HAN, SONG-YI		
IPC分类号	G09G3/36 G02F1/13357 G02F1/133 G09G3/34 H05B41/24 H05B41/282 H05B41/285		
CPC分类号	H05B41/2858 G02F2001/133612 Y02B20/186		
代理机构(译)	康托科尔伯恩LLP		
审查员(译)	阮箐		
优先权	1020020005731 2002-01-31 KR		
其他公开文献	US20060050048A1		
外部链接	<a href="#">Espacenet</a> <a href="#">USPTO</a>		

摘要(译)

公开了一种液晶显示装置，其具有灯驱动装置，用于防止灯由于灯之间的电流变化而被损坏。DC / DC转换器将外部提供的DC电压输入转换为具有预定电压电平的转换DC电压信号。DC / AC逆变器将转换的DC电压信号反相为AC电压信号，以将反相的AC电压信号提供给灯的输入端。功率控制器检测在灯的输出端子处流过灯的电流，以控制从DC / AC逆变器输出的反相AC电压信号的电平，并且当电源控制器旁路时，旁路施加到灯的输入端子的电流的一部分。检测到的电流的电平高于预定阈值。因此，当流过灯的电流水平超过预定阈值时，功率控制器将提供给灯的电流的一部分旁路到地，从而减少提供给灯的电流量和防止灯泡损坏。

