



US006587170B2

(12) **United States Patent**
Shin et al.

(10) **Patent No.:** **US 6,587,170 B2**
(45) **Date of Patent:** **Jul. 1, 2003**

(54) **LIQUID CRYSTAL DISPLAY DEVICE
HAVING A LIGHT SHIELDING MATRIX**

5,831,701 A * 11/1998 Matsuyama et al. 349/110
5,907,379 A * 5/1999 Kim 349/141

(75) Inventors: **Hyunho Shin**, Kunpo-shi (KR); **Chae Gee Sung**, Incheon-shi (KR); **Kouji Takashina**, Yokohama (JP)

FOREIGN PATENT DOCUMENTS

EP	06-99939	3/1996
JP	6-160878	6/1994
JP	6-273803	9/1994
JP	07-301814	11/1995
JP	09-269504	10/1997

(73) Assignee: **LG. Philips LCD Co., Ltd.**, Seoul (KR)

OTHER PUBLICATIONS

(*) Notice: Subject to any disclaimer, the term of this patent is extended or adjusted under 35 U.S.C. 154(b) by 0 days.

Matsumoto, et al., LP-A: Display Characteristics of In-Plane-Switching (IPS) LCDs and a Wide-Viewing-Angle 14.5-in. IPS TFT-LCD, Euro Display 96, 10/1-3/96, pp. 445-448.

(21) Appl. No.: **09/854,504**

* cited by examiner

(22) Filed: **May 15, 2001**

(65) **Prior Publication Data**

Primary Examiner—James Dudek

US 2002/0003597 A1 Jan. 10, 2002

(74) *Attorney, Agent, or Firm*—McKenna Long & Aldridge LLP

Related U.S. Application Data

(57) **ABSTRACT**

(63) Continuation of application No. 09/012,041, filed on Jan. 22, 1998, now Pat. No. 6,271,903.

A liquid crystal display device composed of: a first substrate and a second substrates; a liquid crystal layer provided between the first and second substrates; a plurality of pixel regions provided on the surface opposing the second substrate of the first substrate, each of which pixel regions has at least one pixel electrode and a common electrode for cooperatively applying an electric field in a direction along the surface of the first substrate; and a conductive light shielding matrix provided on the surface opposing the first substrate of the second substrate which light shielding matrix has openings each corresponding to a display region of each of the pixel regions and shades non-display regions other than the pixel regions; in which the light shielding matrix and the common electrode are set to substantially the same voltage.

(30) **Foreign Application Priority Data**

Jan. 23, 1997 (JP) 9-010691

(51) **Int. Cl.**⁷ **G02F 11/1336**

(52) **U.S. Cl.** **349/110; 349/141**

(58) **Field of Search** 349/141, 110

(56) **References Cited**

U.S. PATENT DOCUMENTS

5,039,204 A	*	8/1991	Choi	359/67
5,598,285 A		1/1997	Kondo et al.	349/39
5,781,261 A	*	7/1998	Ohta et al.	349/111
5,786,876 A	*	7/1998	Ota et al.	349/42
5,805,247 A	*	9/1998	Oh-e et al.	349/42

14 Claims, 14 Drawing Sheets

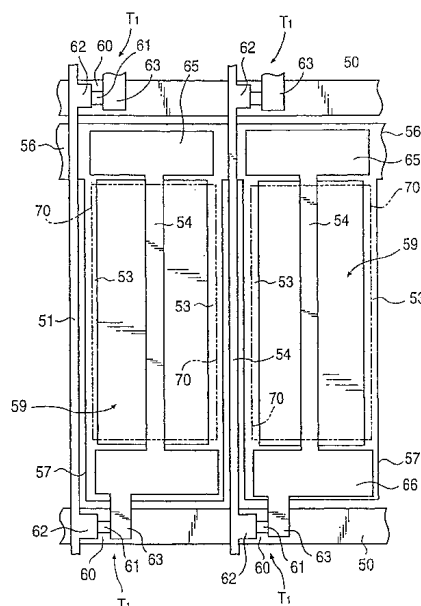


FIG. 1

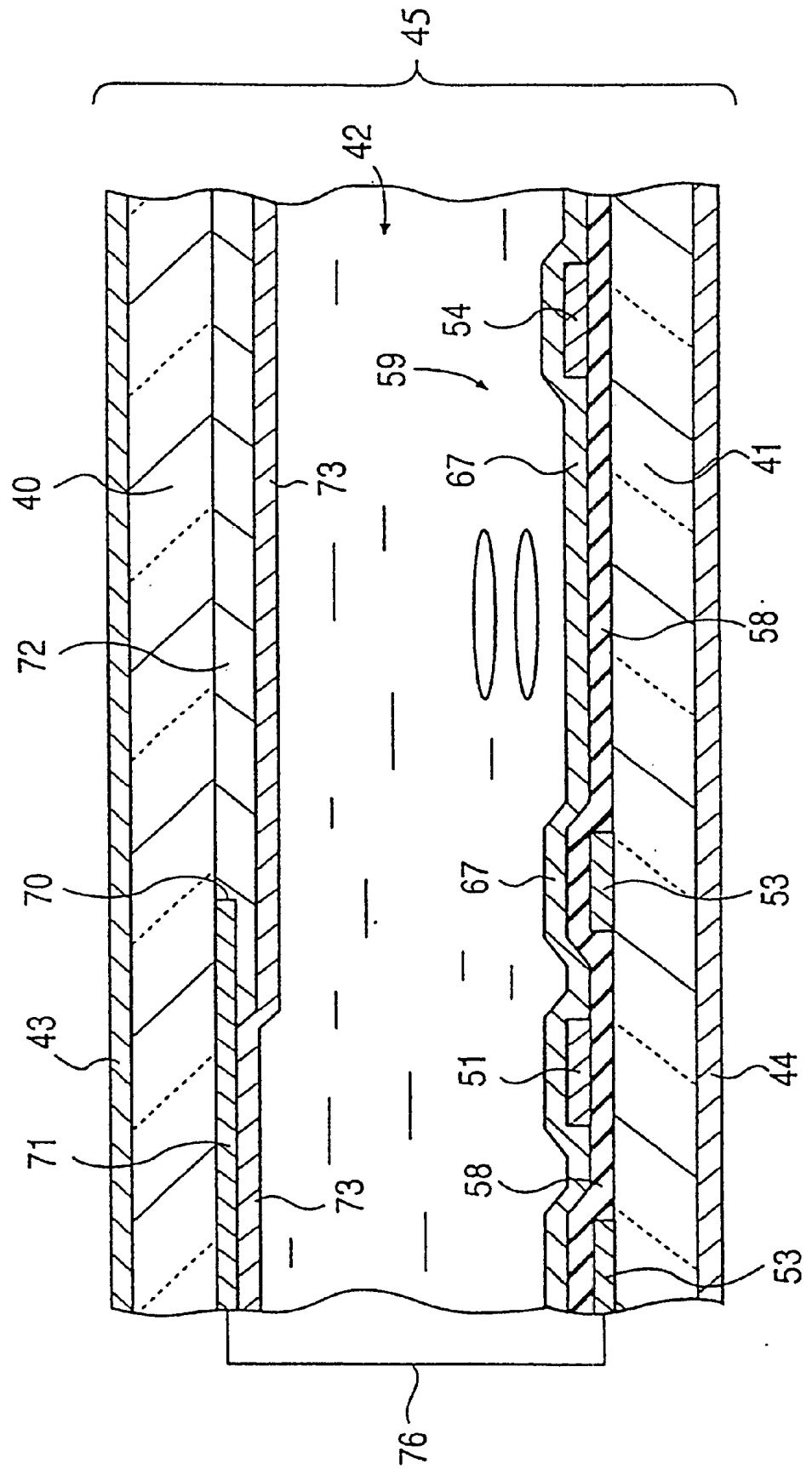


FIG. 2

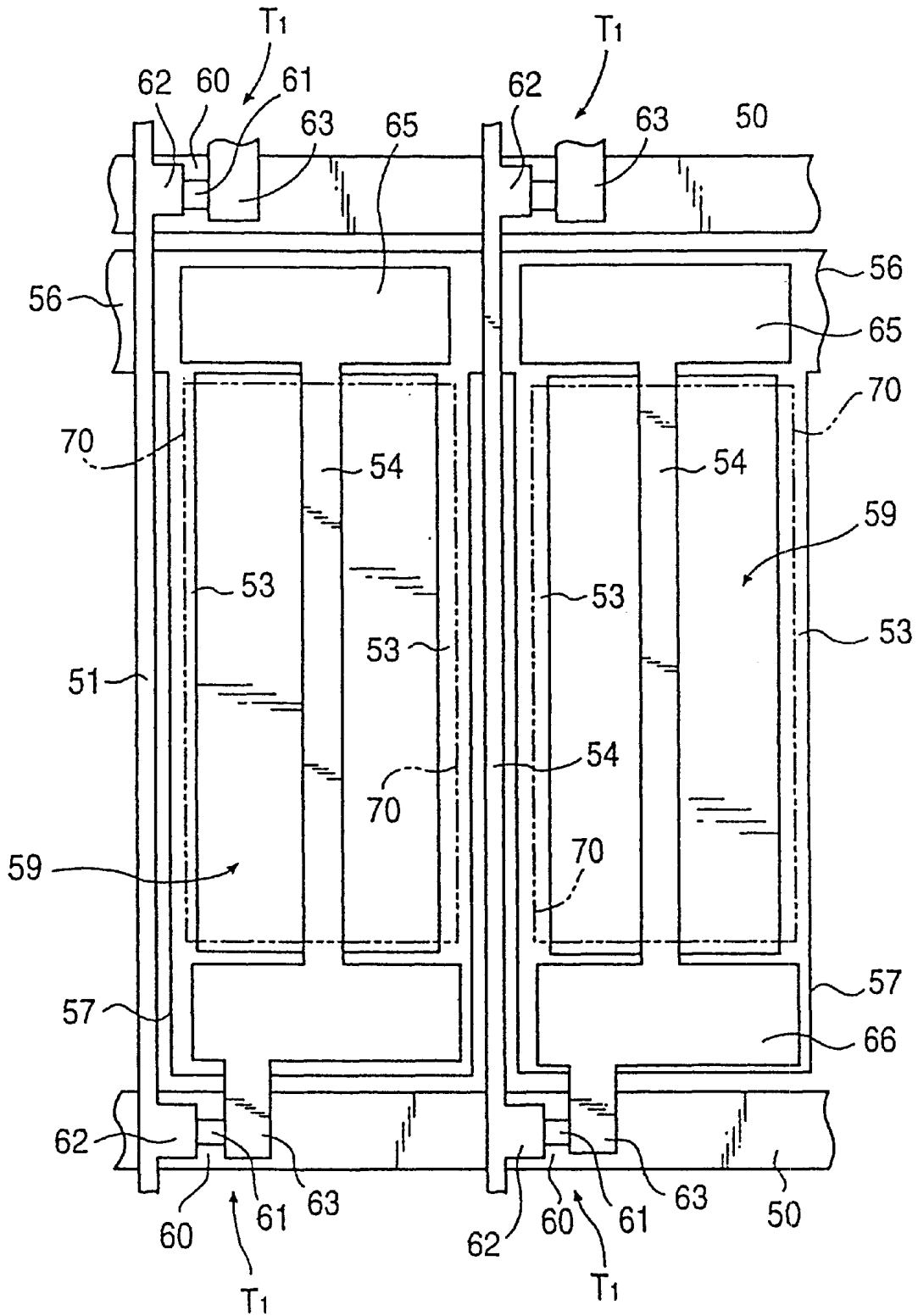


FIG. 3

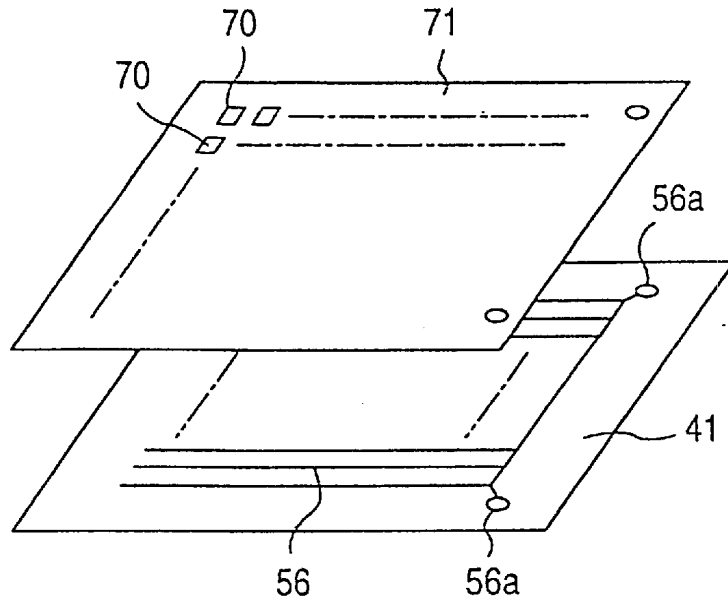


FIG. 4

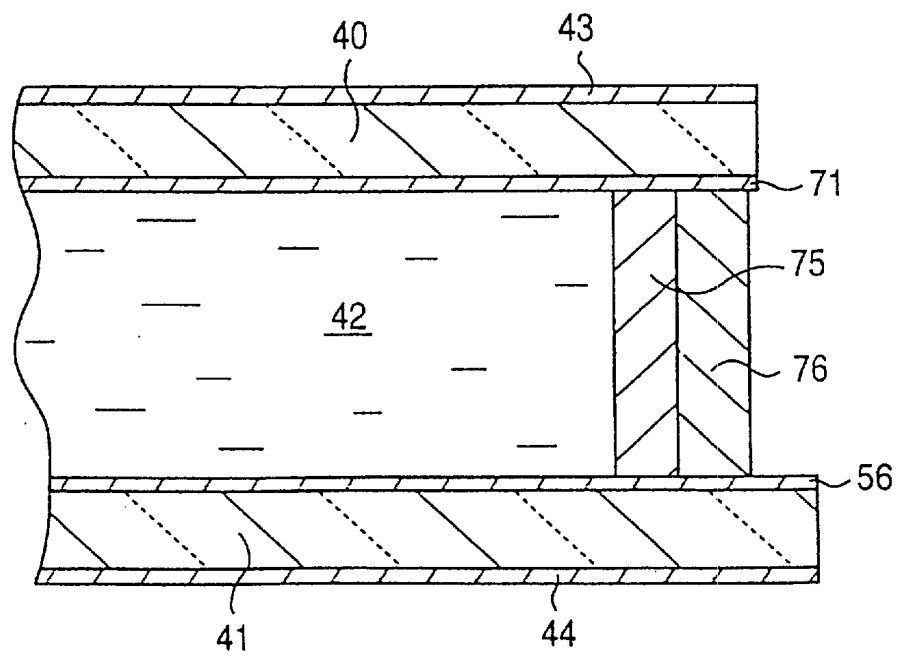


FIG. 5

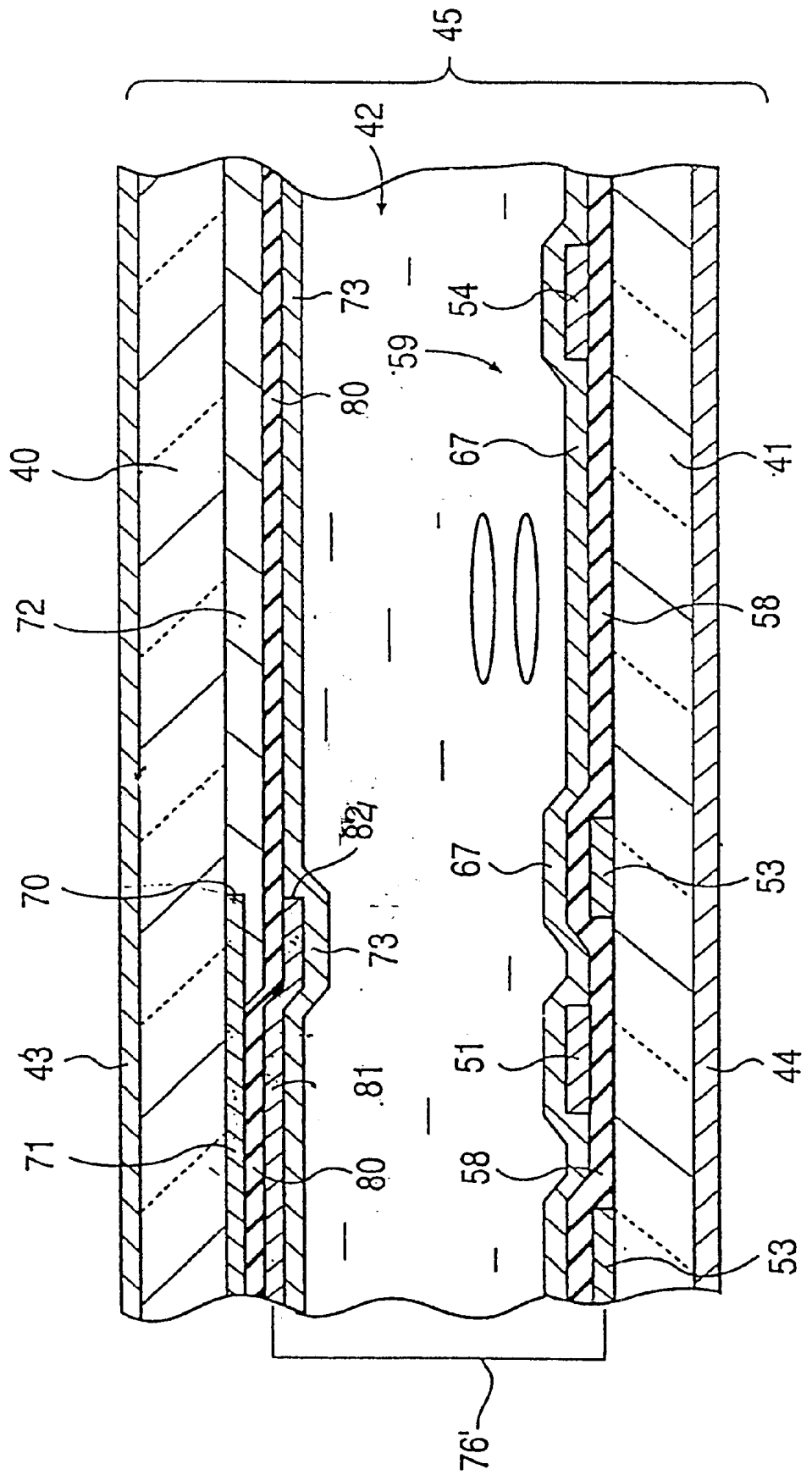


FIG. 6A

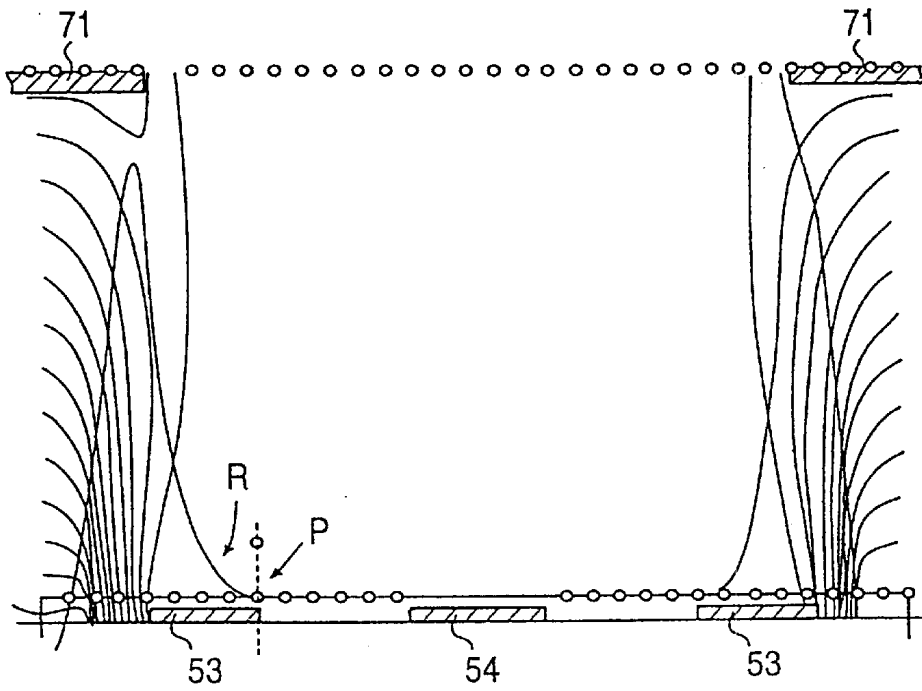


FIG. 6B

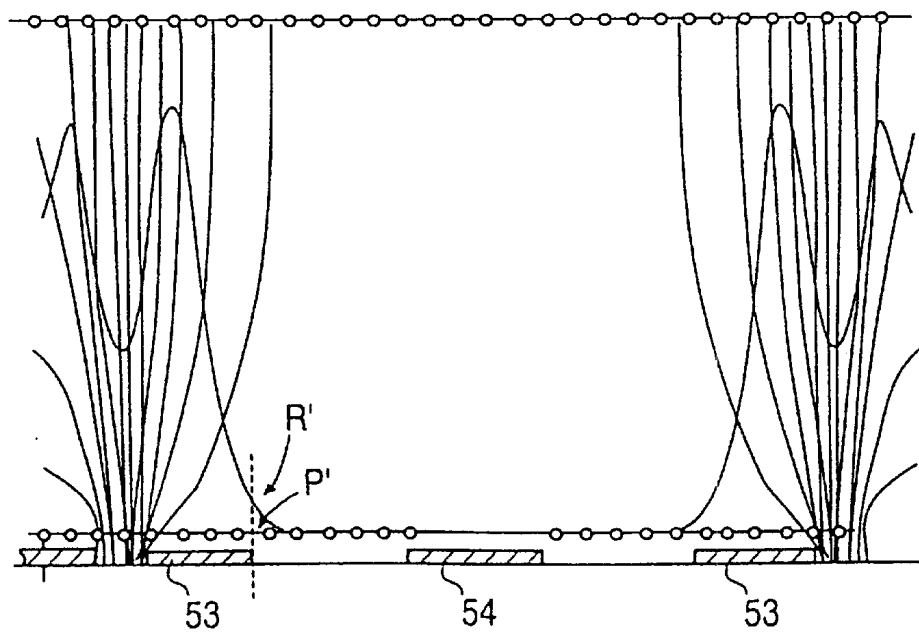


FIG. 7A

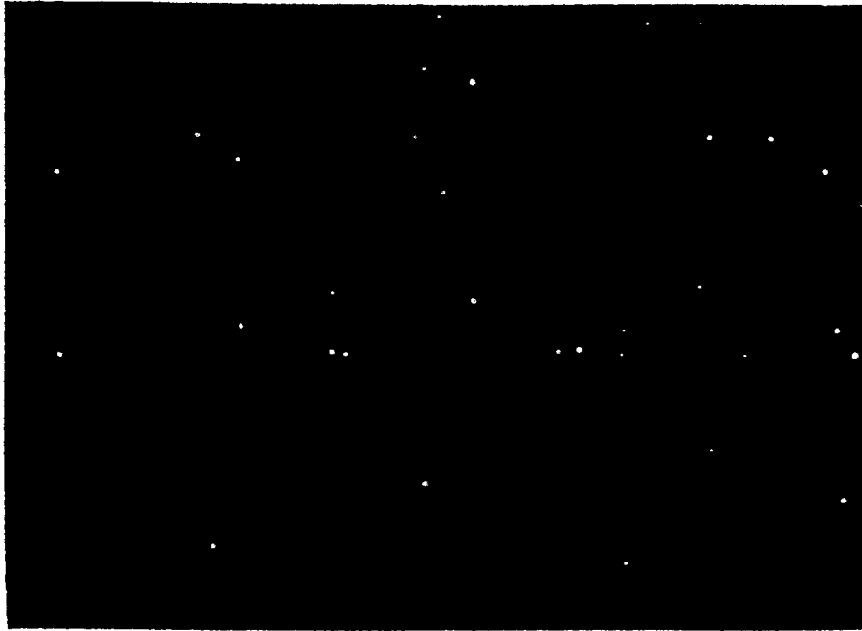


FIG. 7B

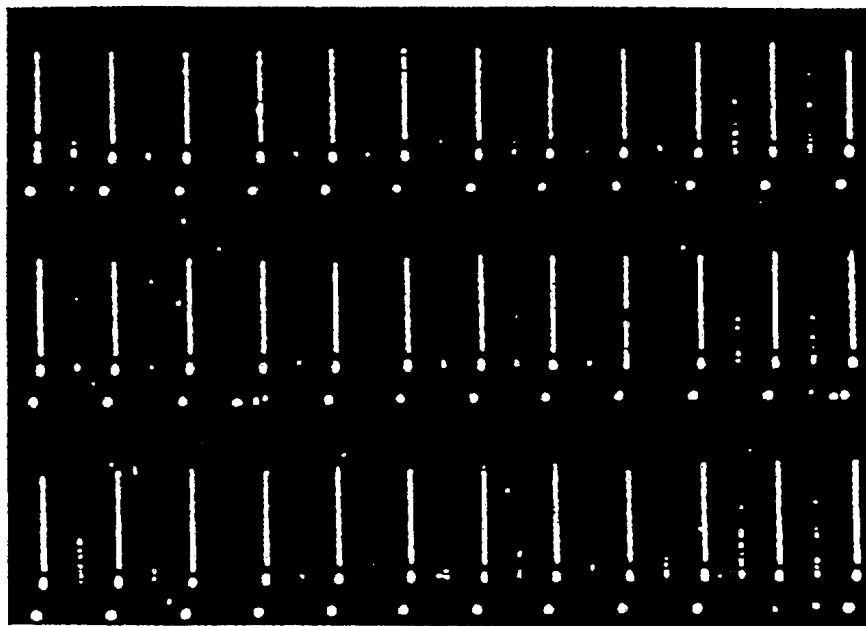


FIG. 8A

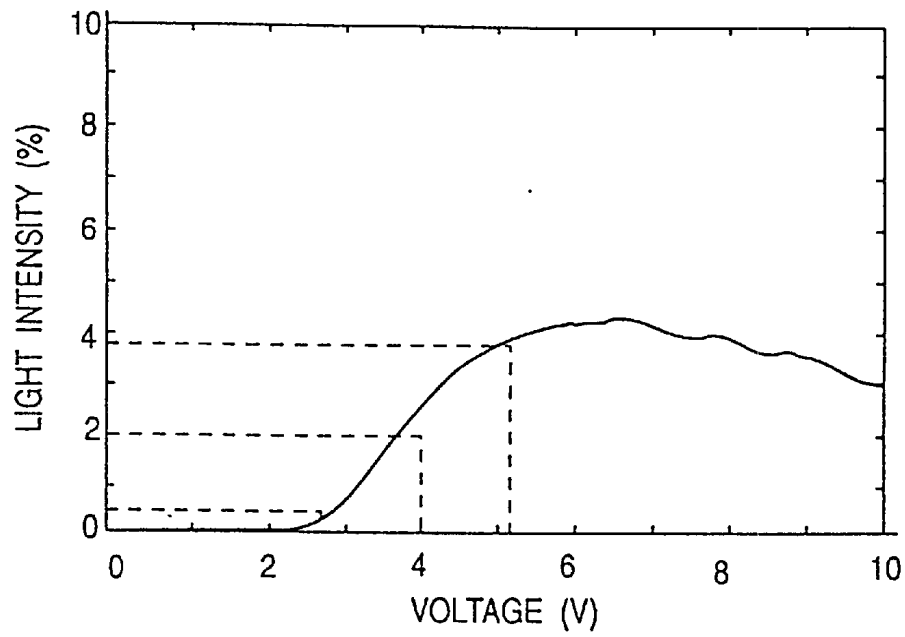


FIG. 8B

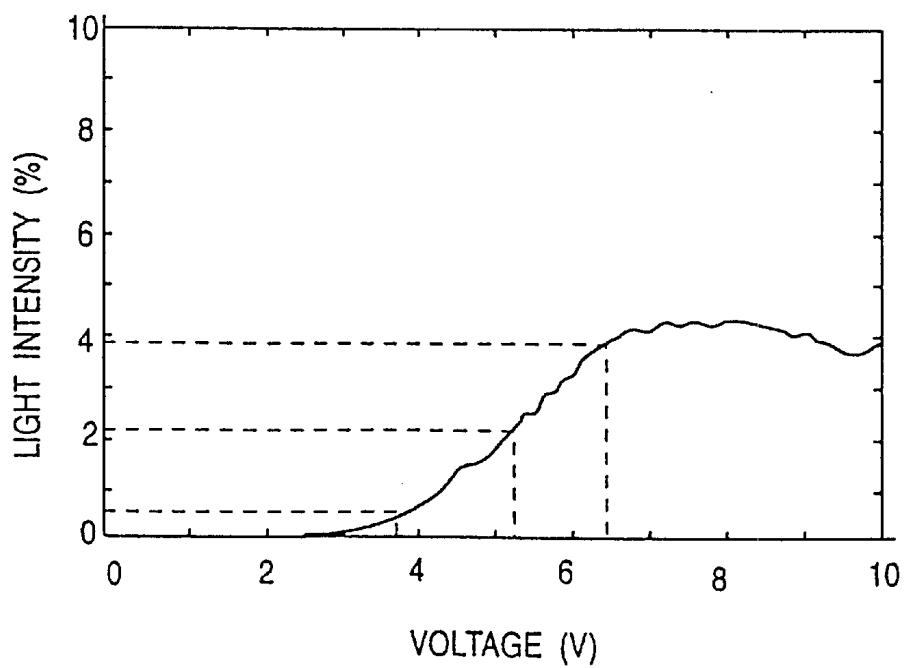


FIG. 9
PRIOR ART

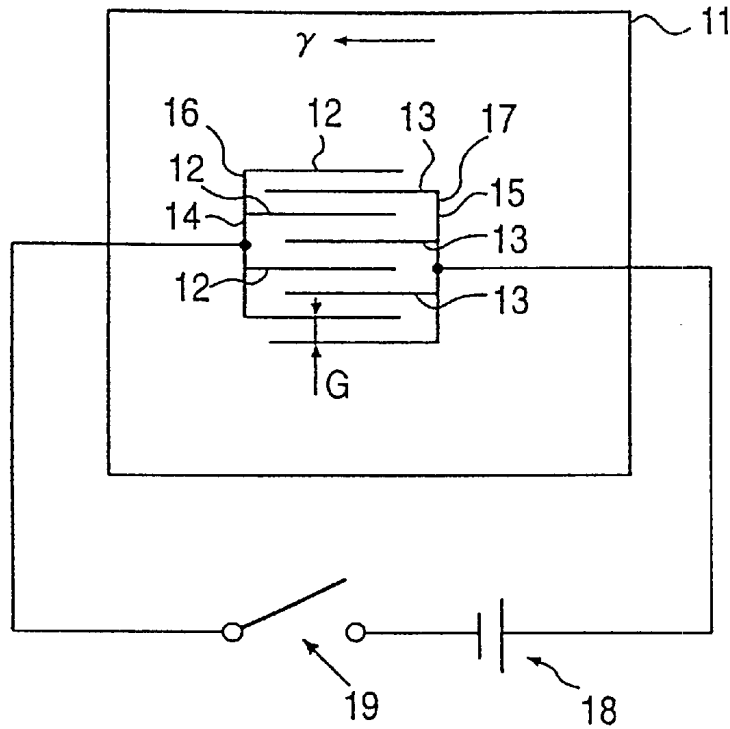


FIG. 10
PRIOR ART

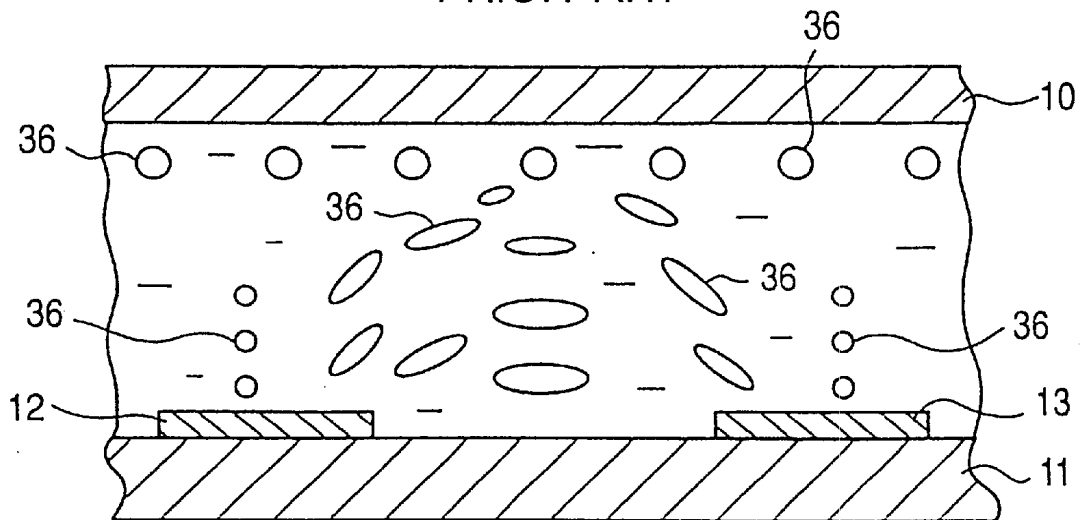
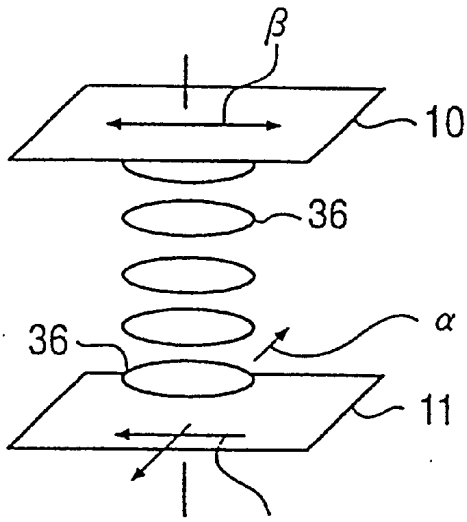


FIG. 11A
PRIOR ART



VOLTAGE OFF (DARK STATE)

FIG. 11B
PRIOR ART

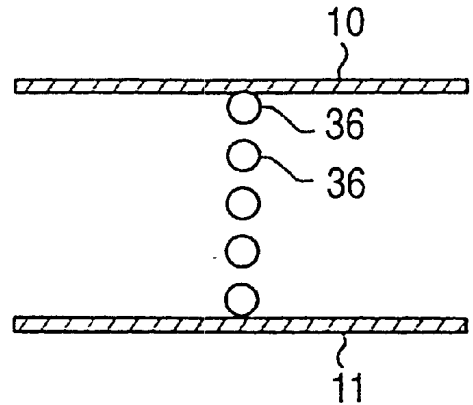
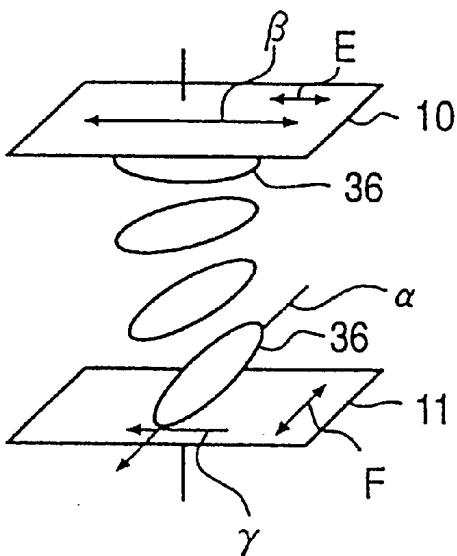


FIG. 12A
PRIOR ART



VOLTAGE ON (BRIGHT STATE)

FIG. 12B
PRIOR ART

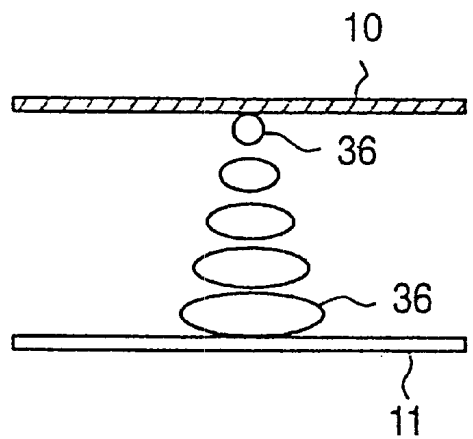


FIG.14

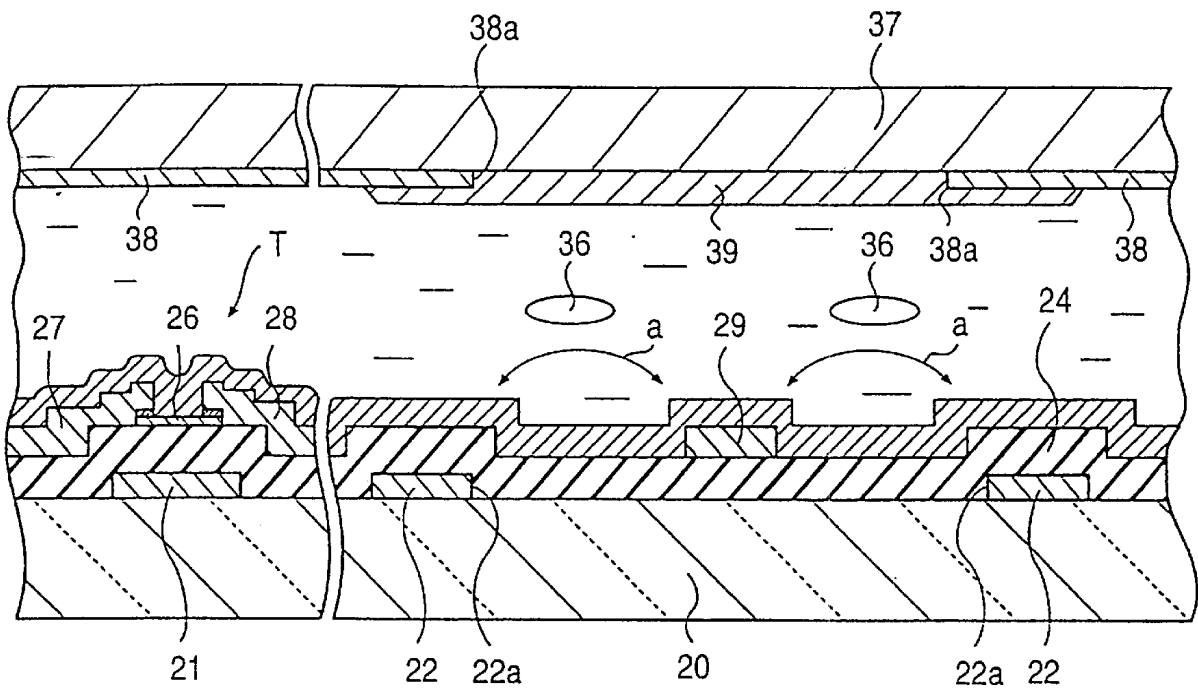


FIG.15

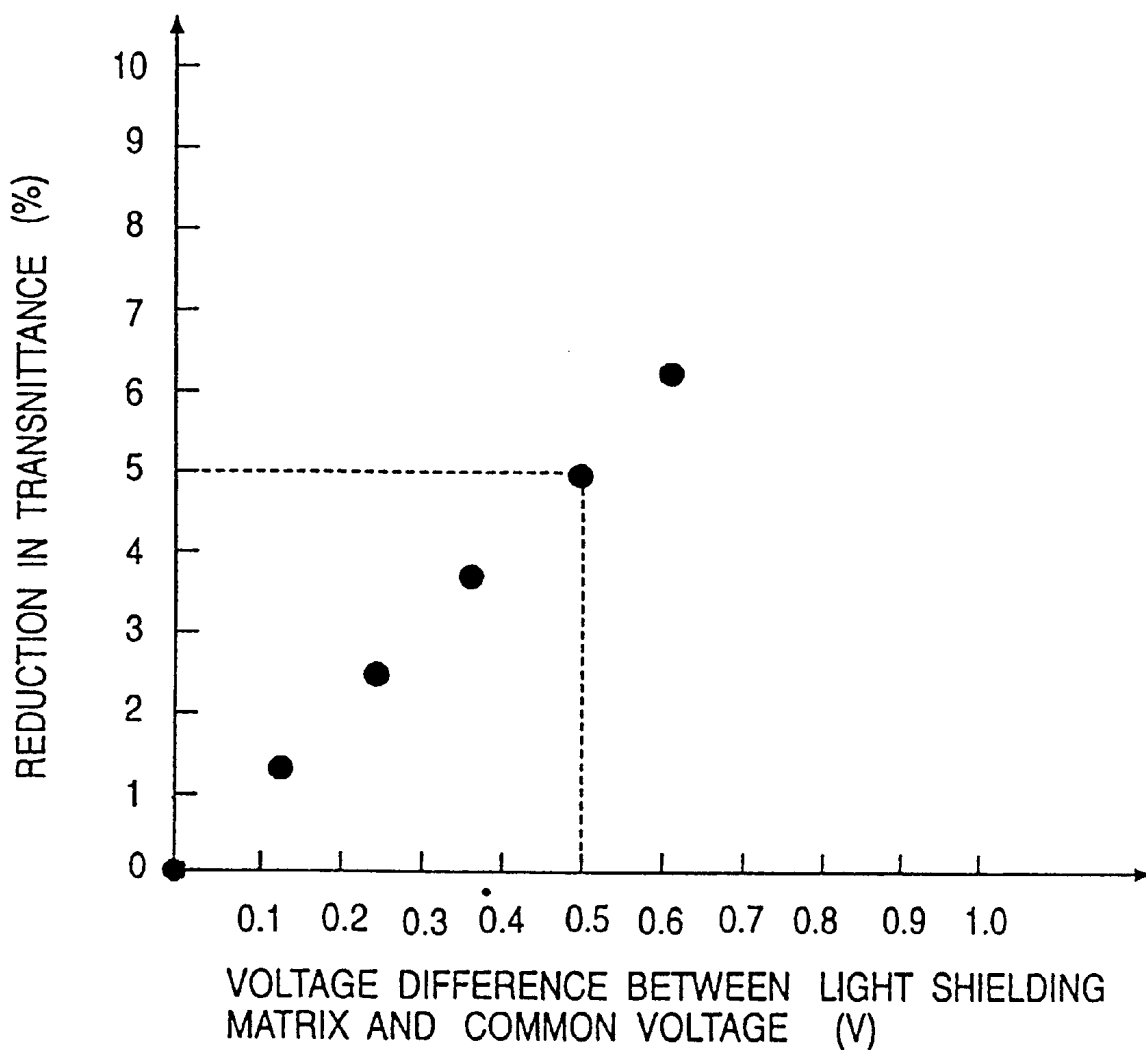


FIG.16

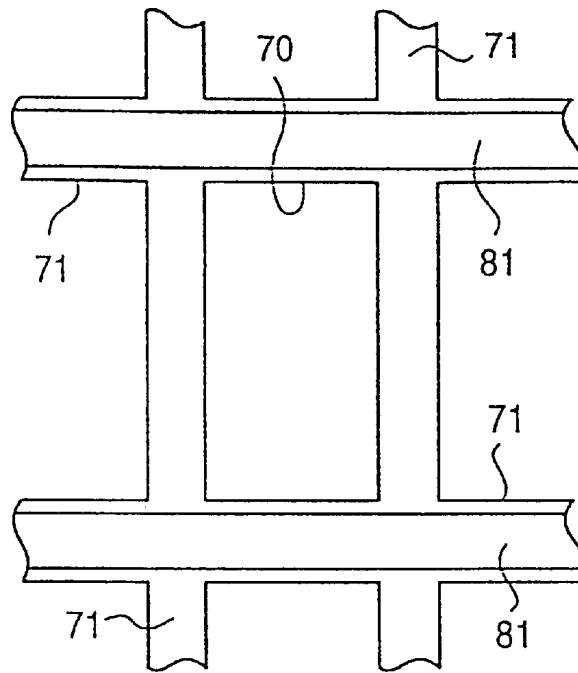


FIG.17

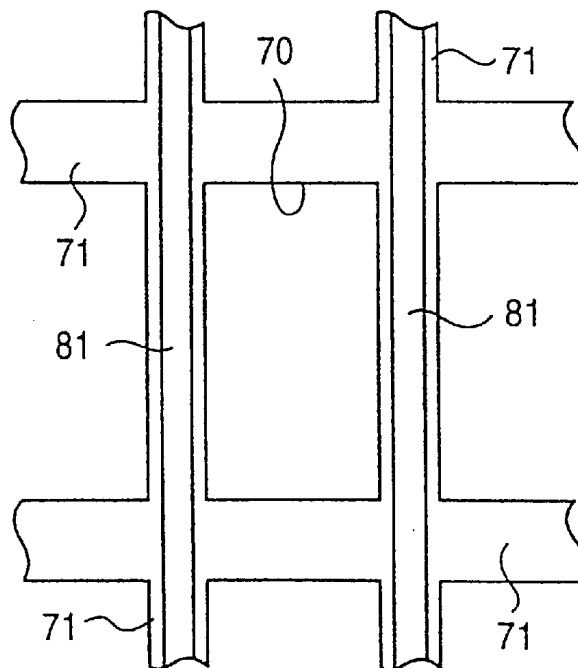
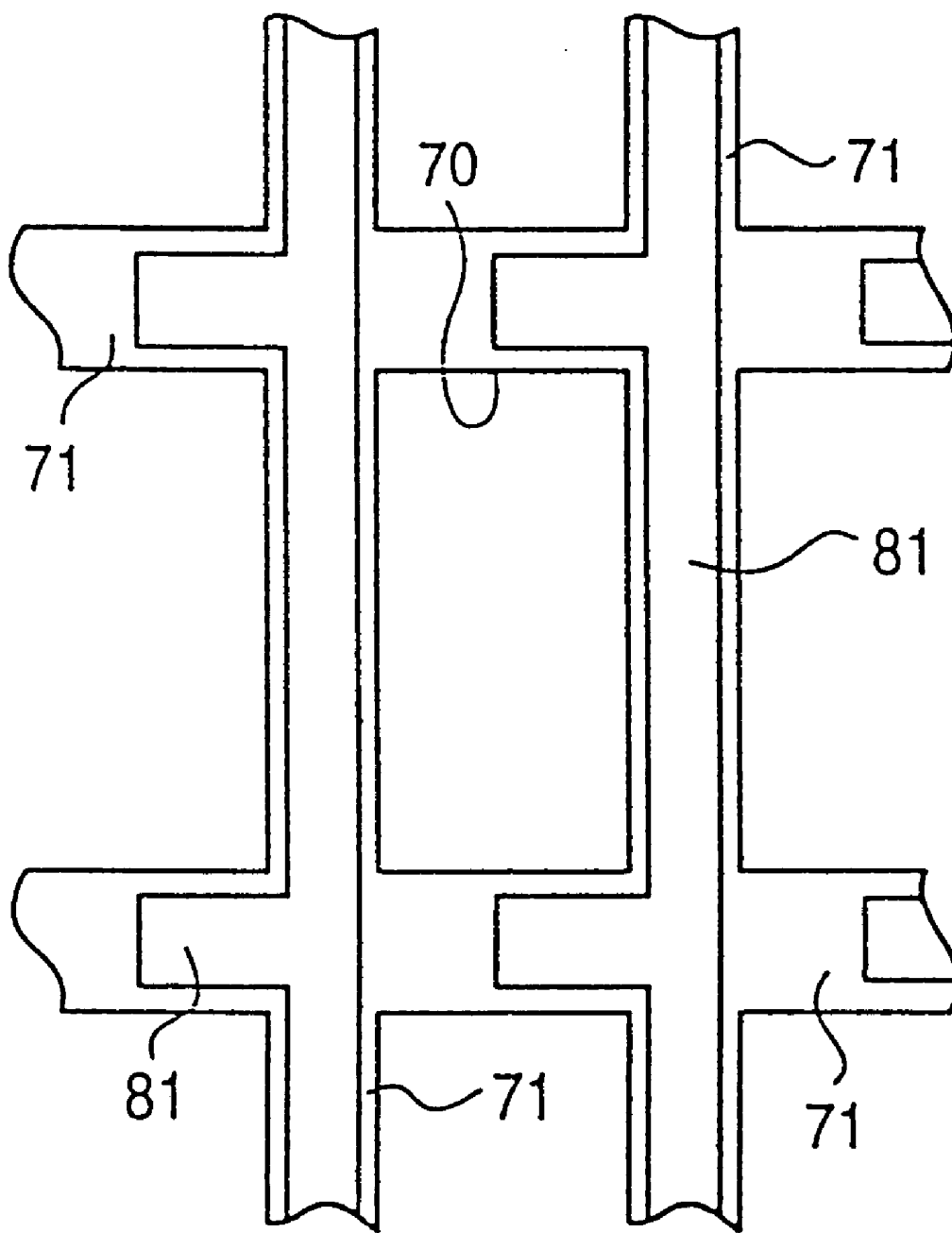


FIG. 18



LIQUID CRYSTAL DISPLAY DEVICE HAVING A LIGHT SHIELDING MATRIX

This application is a Continuation of application Ser. No. 09/012,041 Filed on Jan. 22, 1998 now U.S. Pat. No. 6,271,903.

BACKGROUND OF THE INVENTION

1. Field of the Invention

The present invention relates to a liquid crystal display device in which alignment of liquid crystal can be controlled by applying an electric field along the substrate face, and relates to a structure in which in addition to a wider angle of view, a higher aperture ratio can be achieved.

2. Description of the Prior Art

Recent TN mode liquid crystal display devices have a problem of high dependency on the angle of view, since the visibility in the vertical direction is inferior in spite of excellent visibility in the lateral direction. The applicant of this application claimed liquid crystal display devices having a structure by which the above problem can be solved in Japanese Patent Application Nos. 7-1579, 7-306276, and the like.

According to the techniques described in such Patent Applications, instead of providing liquid crystal driving electrodes for each of the upper and lower substrates sandwiching the liquid crystal layer, two types of linear electrodes **12** and **13** having different polarity from each other are provided only on the lower substrate **11** at a distance from each other, as is shown in FIG. **10**, and no electrode is formed on the upper substrate **10** shown in the upper side of FIG. **10** so that liquid crystal molecules **36** are aligned in the direction of the transverse electric field (in the substrate-face direction) which is generated between the linear electrodes **12** and **13** by applying a voltage.

In more detail, as is shown in FIG. **9**, the linear electrodes **12** are connected by a base line **14** to form a comb-shaped electrode **16**, the linear electrodes **13** are connected by a base line **15** to form a comb-shaped electrode **17**, the comb-shaped electrodes **16** and **17** are engaged with each other such that the linear electrodes **12** and **13** are alternately positioned without being in contact with each other, and a switching element **19** and a power source **18** are connected to the base lines **14** and **15**.

As is shown in FIG. **11A**, an alignment film is formed on the liquid-crystal side of the upper substrate **10** to align the liquid crystal molecules **36** in the β direction, another alignment film is formed on the liquid-crystal side of the lower substrate **11** to align the liquid crystal molecules **36** in the γ direction parallel to the β direction, and a polarizing plate polarizing light in the β direction shown in FIG. **11A** and a polarizing plate polarizing light in the α direction are provided for the substrates **10** and **11**, respectively.

According to the above structure, the liquid crystal molecules **36** are homogeneously aligned in the same direction when no voltage is applied between the linear electrodes **12** and **13**, as is shown in FIGS. **11A** and **11B**. In this state, a light beam transmitted through the lower substrate **11** is polarized in the α direction by the polarizing plate, passes through a layer of the liquid crystal molecules **36**, and then reaches the polarizing plate of the upper substrate **10**, which polarizing plate has a polarization direction α different from the direction β . The light beam is thereby shaded by the polarizing plate of the upper substrate **10** and is unable to pass through the liquid crystal display device, thereby rendering the liquid crystal display device in a dark state.

When a voltage is applied between the linear electrodes **12** and **13**, among the liquid crystal molecules **36**, those adjacent to the lower substrate **11** are aligned perpendicular to the longitudinal direction of the linear electrodes **12** and **13**. The nearer a liquid crystal molecule is located to the lower substrate **11**, the more strongly this phenomenon is observed. In other words, lines of electric force perpendicular to the longitudinal direction of the linear electrodes **12** and **13** are generated by the transverse electric field (an electric field in the substrate-face direction) produced by the linear electrodes **12** and **13**. Thus, the major axes of the liquid crystal molecules **36** aligned in the γ direction by the alignment film formed on the lower substrate **11** are altered to the α direction, i.e., perpendicular to the γ direction, by the force of the electric field which is stronger than that of the alignment film, as is shown in FIG. **12A**.

Therefore, twisted alignment is achieved in the liquid crystal molecules **36** by applying a voltage between the linear electrodes **12** and **13**, as is shown in FIGS. **12A** and **12B**. In this state, the polarization direction of the polarized light beams, which have been transmitted through the lower substrate **11** and polarized in the α direction, is converted by the twisted liquid crystal molecules **36** so that the polarized light beams are allowed to pass through the upper substrate **10** having a polarizing plate whose polarization direction β is different from the α direction. The liquid crystal display device thereby exhibits a bright state.

FIGS. **13** and **14** are an enlarged fragmentary view of the structure of an actual active-matrix liquid crystal driving circuit to which a liquid crystal display device equipped with the linear electrodes **12** and **13** is applied.

The structure shown in FIGS. **13** and **14** corresponds to only one pixel. On a transparent substrate **20** such as a glass substrate, a gate electrode **21** and linear common electrodes **22** both made of a conductive layer are separately provided parallel to each other. A gate insulating film **24** is formed to cover these electrodes. A thin-film transistor T is formed such that a source electrode **27** and a drain electrode **28** are formed on a portion of the gate insulating film **24** corresponding to the gate electrode **21**, and a semiconductor film **26** is provided on a portion of the gate insulating film **24** between the source electrode **27** and the drain electrode **28**. A linear pixel electrode **29** made of a conductive layer is formed on a portion of the gate insulating film **24** between the common electrodes **22**.

FIG. **13** is a plan view of these electrode. Gate lines **30** and signal lines **31** are formed on the transparent substrate **20** according to a matrix pattern. The gate electrode **21** which is a part of the gate line **30** is provided at a corner of each pixel region formed by the gate lines **30** and the signal lines **31**. Via a capacitor electrode **33**, the drain electrode **28** above the gate electrode **21** is connected to the pixel electrode **29** which is provided between the common electrodes **22** in parallel with the signal line **31** and the common electrodes **22**.

The ends, near the gate line **30**, of the common electrodes **22** are connected by a connecting line **34**, provided in the pixel region in parallel with the gate line **30**, and the other ends of the common electrodes **22** are connected by a common line **35**, provided in the pixel region in parallel with the gate line **30**. The common line **35** is provided over numerous pixel regions in parallel with the gate line **30** so as to apply a common voltage to the common electrodes **22** provided for each pixel region.

As is shown in FIG. **14**, on the surface, opposing the substrate **20**, of the substrate **37**, a light shielding matrix **38**

is formed with an opening **38a** corresponding to a pixel region, and a color filter **39** is also provided to cover the opening **38a**.

In the above structure shown in FIGS. **13** and **14**, lines of electric force generated by a transverse electric field can be obtained along the directions of the arrows as shown in FIG. **14**. Thus, the liquid crystal molecules **36** are aligned by the transverse electric field in a manner shown in FIG. **14**. The dark and bright states are thereby switchable by controlling the alignment of the liquid crystal molecules **36** similarly to the above description made with reference to FIGS. **11** and **12**.

However, according to liquid crystal display devices having the above structure, the aperture ratio is disadvantageously reduced in spite of a wide angle of view. In other words, although the liquid crystal molecules **36** are aligned by the transverse electric field generated between the pixel electrode **29** and the common electrodes **22** in the structure shown in FIGS. **13** and **14**, in regions above the common electrodes **22**, the direction of the electric field applied to the liquid crystal molecules **36** differs from that of the transverse electric field, and thus the alignment direction of the liquid crystal molecules **36** in the regions above the common electrodes **22** is different from that in the region between the pixel electrode **29** and the common electrodes **22**, as is shown in FIG. **10**.

Therefore, as is shown in FIG. **14**, the light shielding matrix **38** is conventionally employed for shading the regions above the common electrodes **22**, which regions may cause problems such as light leakage. Furthermore, the periphery of the opening **38a** of the light shielding matrix **38** is positioned slightly inside the inner end **22a** of each common electrode **22**, thereby increasing the region shaded by the light shielding matrix **38**. Thus, the aperture ratio of the resulting liquid crystal display device cannot be increased.

SUMMARY OF THE INVENTION

In view of the above-mentioned problems, it is an object of the present invention to provide a liquid crystal display device having a high aperture ratio while maintaining a wide angle of view, in which the liquid crystal is driven by a transverse electric field.

To solve the above object, a liquid crystal display device of the present invention is composed of: a first substrate and a second substrate; a liquid crystal layer provided between the first and second substrates; a plurality of pixel regions provided on the surface opposing the second substrate of the first substrate, each of which pixel regions has at least one pixel electrode and a common electrode cooperatively applying an electric field in a direction along the surface of the first substrate; and a conductive light shielding matrix provided on the surface opposing the first substrate of the second substrate, which light shielding matrix has openings, each opening corresponding to a display region of each of the pixel regions, and shades non-display regions other than the pixel regions; in which the light shielding matrix and the common electrode are set to substantially the same voltage.

In addition, a liquid crystal display device of the present invention may be composed of: a first substrate and a second substrate; a liquid crystal layer provided between the first and second substrates; a plurality of pixel regions provided on the surface opposing the second substrate of the first substrate, each of which pixel regions has at least one pixel electrode and a common electrode cooperatively applying an electric field in a direction along the surface of the first

substrate; and a conductive light shielding matrix provided on the surface opposing the first substrate of the second substrate, which light shielding matrix has openings, each opening corresponding to a display region of each of the pixel regions, and shades non-display regions other than the pixel regions; in which a conductive film at substantially the same voltage as the common electrode is formed at least above the light shielding matrix with an insulating film interposed therebetween, and the light shielding matrix and the common electrode are set to substantially the same voltage.

According to such structures, a transverse electric field can be applied to the liquid crystal layer by the common electrode and the pixel electrode both provided on the substrate, thereby switching a dark state and a bright state. In addition, since the common electrode and the light shielding matrix or the conductive layer are set to substantially the same voltage, the lines of electric force of the transverse electric field applied to liquid crystal molecules near the common electrode can be uniform. Thus, alignment disorder of the liquid crystal molecules in a region near the common electrode can be reduced, the liquid crystal molecules in that region can be used for displaying, and thus the region is not required to be shaded by the light shielding matrix. The light shielding matrix is thereby allowed to have larger openings as compared with those in the prior art, resulting in an improved aperture ratio.

In the above liquid crystal display device, the voltage difference is preferably set in a range of from 0.5 V to +0.5 V, both inclusive.

When the voltage difference between the common electrode and the light shielding matrix is outside the above range, the lines of electric force applied to the liquid crystal in the region corresponding to the common electrode are disturbed so that the alignment disorder of the liquid crystal molecules **36** is readily increased and causes problems such as light leakage. Thus, it becomes impossible to enlarge the opening of the light shielding matrix and to improve the aperture ratio.

Furthermore, a liquid crystal display device of the present invention may have the following structure: the common electrode formed on the first substrate is extended to a peripheral edge of the first substrate, the light shielding matrix or the conductive film formed on the second substrate is extended to a peripheral edge of the second substrate, and the common electrode and the light shielding matrix or the conductive film are electrically connected via a conductive member at the peripheral edge of the first and second substrates.

Moreover, a liquid crystal display device of the present invention may have the following structure: the liquid crystal layer is encapsulated between the first and second substrates by a sealing member, the common electrode formed on the first substrate is extended outside the sealing position of the sealing member on the first substrate, the light shielding matrix or the conductive film formed on the second substrate is extended outside the sealing position of the sealing member on the second substrate, and the common electrode and the light shielding matrix or the conductive film are electrically connected at a position outside the sealing member via a conductive member provided between the first and second substrates.

According to the above structures, the common electrode and the light shielding matrix or the conductive film can be readily connected electrically at substantially the same voltage, thereby achieving a liquid crystal cell having a wide angle of view and a high aperture ratio.

BRIEF DESCRIPTION OF THE DRAWINGS

FIG. 1 is a fragmentary cross-sectional view showing a liquid crystal display device of the first embodiment incorporated in the present invention;

FIG. 2 is a plan view showing an arrangement of electrodes in the first embodiment;

FIG. 3 is a perspective view showing a light shielding matrix and a substrate surface in the first embodiment;

FIG. 4 is a fragmentary cross-sectional view showing the structure of a connection portion at a peripheral edge of the substrates in the first embodiment;

FIG. 5 is a fragmentary cross-sectional view showing a liquid crystal display device of the second embodiment incorporated in the present invention;

FIG. 6A shows the simulation results obtained from a liquid crystal display device of Example in which a light shielding matrix and common electrodes are connected and grounded, and FIG. 6B shows the simulation results obtained from a liquid crystal display device of Comparative Example in which a light shielding matrix and common electrodes are not connected, the light shielding matrix is floating, and the common electrodes are grounded;

FIG. 7A is a photograph showing the result of a light-leakage occurrence test using a liquid crystal display device of Example in which a light shielding matrix and common electrodes are connected and grounded, and FIG. 7B is a photograph showing the result of a light-leakage occurrence test using a liquid crystal display device of Comparative Example in which the gate electrode voltage V_G is set to 15 V, a light shielding matrix is floating, and common electrodes are grounded;

FIGS. 8A and 8B show the transmittance-driving voltage characteristics of the liquid crystal display devices of Example and Comparative Example, respectively;

FIG. 9 is a plan view of a substrate, having linear electrodes thereon, of a liquid crystal display device of the prior art, in which device alignment of liquid crystal molecules is controlled by applying a transverse electric field;

FIG. 10 shows alignment of liquid crystal molecules when a voltage is applied to the linear electrodes shown in FIG. 9;

FIG. 11A shows alignment of liquid crystal molecules in a dark state of a liquid crystal display device of the prior art, in which device alignment of the liquid crystal molecules is controlled by applying a transverse electric field, and FIG. 11B is a side view of the alignment shown in FIG. 11A;

FIG. 12A shows alignment of liquid crystal molecules in a bright state of a liquid crystal display device of the prior art, in which device alignment of the liquid crystal molecules is controlled by applying a transverse electric field, and FIG. 12B is a side view of the alignment shown in FIG. 12A;

FIG. 13 is a plan view showing linear electrodes in a liquid crystal display device of the prior art, in which device alignment of liquid crystal molecules is controlled by applying a transverse electric field;

FIG. 14 shows the cross-sectional structure of the liquid crystal display device shown in FIG. 13;

FIG. 15 shows the relationship between the reduction in the transmittance and the voltage difference between the light shielding matrix and the common electrodes in a liquid crystal display device of Example, with the transmittance obtained by setting the light shielding matrix and the common electrodes to the same voltage being defined as 100% transmittance;

FIG. 16 shows a structural example incorporated in the present invention;

FIG. 17 shows another structural example incorporated in the present invention; and

FIG. 18 shows still another structural example incorporated in the present invention.

DESCRIPTION OF THE PREFERRED EMBODIMENT

The present invention will be better understood from the following description of the preferred embodiments taken in conjunction with the accompanying drawings.

FIGS. 1 to 4 show main sections of a liquid crystal display device of the first embodiment incorporated in the present invention. In FIG. 1, an upper substrate (second substrate) 40 and a lower substrate (first substrate) 41 are positioned opposing each other with a predetermined space (cell gap) therebetween, a liquid crystal layer 42 is formed between the substrates 40 and 41, and polarizing plates 43 and 44 are provided on the outer surface of the substrates 40 and 41, respectively.

These substrates 40 and 41 are made of a transparent material such as glass. For actually preparing the above structure, the periphery of the substrates 40 and 41 is sealed by a sealing member, and a space formed by the substrates 40 and 41 and the sealing member is filled with a liquid crystal to form the liquid crystal layer 42. A liquid crystal cell 45 is obtained by assembling the substrates 40 and 41 and the polarizing plates 43 and 44.

As is shown in FIG. 2, on the transparent substrate 41, a plurality of gate lines 50 and signal lines 51 are formed according to a matrix pattern, and linear electrodes (common electrodes) 53 and another linear electrode (pixel electrode) 54 are provided in parallel with each other in each pixel region 59 formed by the gate lines 50 and the signal lines 51.

In more detail, on the substrate 41, a plurality of gate lines 50 are formed in parallel with each other at predetermined intervals; common lines 56 are provided along the gate lines 50 on the same plane as that of the gate lines 50; in each region formed by the gate lines 50 and the signal lines 51, two linear common electrodes 53 are extended from the common line 56 in a perpendicular direction to the common line 56; near an adjacent gate line 50, the ends of the two common electrodes 53 are connected by a connecting line 57; and each region formed by the gate lines 50 and the signal lines 51 is used as the pixel region 59.

Although, numerous pixel regions 59 required for a liquid crystal display device are provided in the liquid crystal cell 45 as a whole, FIG. 1 shows a fragmentary cross-sectional structure of one pixel region 59 and FIG. 2 shows a plan structure corresponding to two adjacent pixel regions 59.

Each of the thin-film transistors (switching elements) T_1 shown in FIG. 2 is formed as follows: an insulating layer 58 covering the above-mentioned lines is formed on the substrate 41, as is shown in FIG. 1; the gate lines 50 and the signal lines 51 are formed on the insulating layer 58 such that each of the gate line 50 and the signal lines 51 perpendicularly cross each other to form a matrix pattern on the plan view; a portion of the gate line 50 near an intersection between the gate line 50 and a signal line 51 is used as the gate electrode 60; and a source electrode 62 and a drain electrode 63, between which a semiconductor film 61 is formed, are provided on a portion of the insulating layer 58 above the gate electrode 60. In the center of each pixel region 59, a linear pixel electrode 54 is provided in parallel

with the common electrodes **53**. A capacitance generating section **65** is formed by extending one end of the pixel electrode **54** on a portion of the insulating layer **58** above the common line **56** and another capacitance generating section **66** is formed by extending the other end of the pixel electrode **54** on a portion of the insulating layer **58** above the connecting line **57**. The capacitance generating sections **65** and **66** are provided for generating capacitance between the insulating layer **58** and the common line **56** or the connecting line **57** so as to cancel the parasitic capacitance at the time of driving the liquid crystal.

The source electrode **62** is connected to the signal line **51**, the drain electrode **63** is connected to the capacitance generating section **66** formed on the portion of the insulating layer **58** above the connecting line **57**, and they are covered with an alignment film **67**, as is shown in FIGS. **1** and **2**.

The electrodes **53** and **54** used for the above first embodiment may be formed as either a light-shading metallic electrode or a transparent electrode. However, in the case of employing the undermentioned normally black mode display, transparent electrodes made of ITO (indium tin oxide), etc. are preferable.

On the lower surface of the substrate **40**, a light shielding matrix **71** is formed with an opening **70** corresponding to the pixel region **59** formed on the substrate **41**, and a color filter **72** is also provided to cover the opening **70**. An alignment film **73** covering the light shielding matrix **71** and the color filter **72** is also formed. The light shielding matrix **71** is made of a light-shading metallic film composed of a Cr layer alone or composed of a CrO layer and a Cr layer, and is used for shading non-display portions of each pixel region **59** such that it shades the common line **56**, the connecting line **57**, the signal line **51**, and the gate line **50** in each pixel region **59** and it also shades a part of the common electrode **53** in the width direction. In other words, as is shown by the dotted chain lines of FIG. **2**, substantially the entire region between the common electrodes **53** of each pixel region **59** and almost the common electrodes **53** as a whole in the width direction are exposed by the opening **70** of the light shielding matrix **71**.

In the case of a color liquid crystal display device, color filters **72** (red, green, and blue) are provided for pixel regions **59**, as is shown in FIG. **1**. However, the color filters **72** can be omitted in monochrome liquid crystal display devices.

The periphery of the light shielding matrix **71** formed on the substrate **40** is extended outside the sealing member **75** provided on the periphery of the substrate **40** for sealing the liquid crystal, as is shown in FIG. **4**. The common lines **56** formed on the substrate **41** are extended outside the sealing member **75** provided on the periphery of the substrate **41** for sealing the liquid crystal, as is shown in FIGS. **3** and **4**. As is shown in FIG. **4**, terminals **56a** connecting to the common lines **56** are provided on the periphery of the substrate **41** and connected to the light shielding matrix **71** by a conductive member **76** such as an Ag paste provided between the substrates **40** and **41** so that the light shielding matrix **71** and the common lines **56** (common electrodes **53**) have the same voltage (ground voltage). Two terminals **56a** are employed in the first embodiment so as to ensure the connection between one terminal and the light shielding matrix **71** via the conductive member **76** even when the connection between the other terminal **56a** and the light shielding matrix **71** is damaged.

In the first embodiment, the light shielding matrix **71** and the common lines **56** (common electrodes **53**) are connected to the same voltage, however, they may be substantially at the same voltage and are not required to be at completely the same voltage.

“Substantially the same voltage” is defined as follows: the voltage difference between the light shielding matrix **71** and the common electrodes **53** is in a range of from -0.5 V to $+0.5$ V, both inclusive.

In the liquid crystal display device of the first embodiment, the alignment film **73** of the substrate **40** and the alignment film **67** of the substrate **41** are aligned in a direction substantially parallel to the longitudinal direction of the common electrodes **53**. The liquid crystal molecules in the liquid crystal layer **42** interposed between the substrates **40** and **41** are thereby homogeneously aligned such that the major axis of the liquid crystal molecules is in parallel with the longitudinal direction of the common electrodes **53** without an applied electric field.

Furthermore, in the structure of the first embodiment, the polarization axis of the polarizing plate **43** is in a direction substantially parallel to the longitudinal direction (the sheet-thickness direction of FIG. **1**) of the common electrodes **53**, and the polarization axis of the polarizing plate **44** is in a direction substantially perpendicular to the longitudinal direction (the lateral direction of FIG. **1**).

According to the above structure incorporated in the present invention, the dark state and the bright state can be switched by switching the application of a voltage between the common electrodes **53** and pixel electrode **54** that are in the desired pixel regions **59** using the thin film transistor T_1 i.e., a switching element.

In other words, when a voltage is applied between the common electrodes **53** and pixel electrodes **54** that are in the desired pixel regions **59** by operating the thin-film transistor T_1 , an electric field is generated in the transverse direction of FIG. **1** and is applied to the liquid crystal layer. The liquid crystal molecules are thereby twisted between the substrates **40** and **41**, resulting in a bright state similarly to FIG. **12**.

With no applied voltage between the common electrodes **53** and pixel electrodes **54**, the liquid crystal molecules are homogeneously orientated in the same direction as the alignment direction of the alignment films **67** and **73**, resulting in a dark state similarly to FIG. **11**.

The alignment of the liquid crystal molecules is controlled as mentioned above. Thus, the light beams, which emerge from a back light provided below the substrate **41**, are shaded or transmitted according to the alignment of the liquid crystal molecules. In this case, the display is in the so-called normally black mode such that the display is in the dark state without controlling the alignment of the liquid crystal molecules and is in the bright state when the alignment of the liquid crystal molecules is controlled. Since the liquid crystal molecules **36** are aligned homogeneously along the substrate-face direction or twisted by 90° between the substrates **40** and **41**, the resulting liquid crystal display device has a wide angle of view and a small dependency of transmittance on the angle of view.

According to the structure of the first embodiment, it is possible to set the light shielding matrix **71** and the common electrodes **53** at substantially the same voltage. Thus, the disturbance of the lines of electric force in regions corresponding to the common electrodes **53** can be reduced, and as a result, alignment disorder of the liquid crystal molecules can be decreased. In other words, in the structure shown in FIG. **14**, since the light shielding matrix **38** is electrically floating, it may be affected by a surrounding electric field and have a variable voltage. Thus, the liquid crystal alignment in the regions corresponding to the common electrodes **22** may be disturbed by the voltage generated in the light shielding matrix **38**. However, according to the structure of

the first embodiment incorporated in the present invention, the light shielding matrix **71** and the common electrodes **53** are grounded at substantially the same voltage. Thus, the disturbance of the electric field in the regions corresponding to the common electrodes **53** is reduced, and the alignment of the liquid crystal molecules in the regions corresponding to the common electrodes **53** is improved as compared with conventional structures. As a result, problems such as light leakage in the regions corresponding to the common electrodes **53** do not readily occur. Therefore, the opening **70** of the light shielding matrix **71** can also be extended to the region (the region above the common electrodes **53**) in which light leakage does not occur, resulting in a liquid crystal display device having a high aperture ratio.

Therefore, the dark state and the bright state can be switched according to the liquid crystal alignment controlled by applying a transverse electric field, thereby providing a liquid crystal display device having a high aperture ratio and small dependency on the angle of view.

In the structure of the first embodiment, "substantially the same voltage" means preferably as follows: the voltage difference between the light shielding matrix **71** and the common electrodes **53** is set in a range of from -0.5 V to $+0.5$ V, both inclusive.

When the voltage difference between the light shielding matrix **71** and the common electrodes **53** is outside the above range, the lines of electric force applied to the liquid crystal in the regions corresponding to the common electrodes **53** are disturbed so that the alignment disorder of the liquid crystal molecules is readily increased and causes problems such as light leakage. Thus, it becomes impossible to enlarge the opening **70** of the light shielding matrix **71** and to improve the aperture ratio.

Furthermore, the driving voltage for obtaining the maximum transmittance as a liquid crystal display device can be reduced in the structure of the first embodiment, because the aperture ratio is improved by the enlargement of the opening **70** of the light shielding matrix **71**, which enlargement is achieved by reducing the alignment disorder of the liquid crystal molecules **36** in the regions corresponding to the common electrodes **53**.

The parasitic capacitance generated in the liquid crystal display device can be partially canceled by a capacitance formed between the capacitance generating sections **65** and **66** and the common and connecting lines **56** and **57**, both of which oppose the capacitance generating sections **65** and **66** with the insulating layer **58** interposed therebetween.

FIG. **5** shows a main section of a liquid crystal display device of the second embodiment, the reference numerals in FIG. **5** identify substantially identical parts in the first embodiment shown in FIG. **1**, and detailed explanations thereof are omitted.

The liquid crystal display device of the second embodiment is different from that of the first embodiment in the following aspects: an insulating film **80**, such as an over-coat layer, covering the light shielding matrix **71** and the color filter **72** is formed on the lower surface (opposing surface) of the substrate **40**; on the insulating film **80**, a conductive film **81** is provided with the same pattern as that of the light shielding matrix **71**; and the alignment film **73** is formed on the conductive film **81**.

Furthermore, according to the second embodiment, the common electrodes **53** and the conductive film **81** are connected by a conductive member **76'**, and are grounded at substantially the same voltage. The conductive film **81** has an opening **82** with the same pattern as the opening **72** of the light shielding matrix **71**.

The conductive layer **81** may be either a shading metallic layer made of Cr, etc. or a transparent conductive layer made of ITO, etc.

In the liquid crystal display device having the structure shown in FIG. **5**, the dark state and the bright state are switchable by switching the application of a voltage between the common electrodes **53** and pixel electrodes **54** that are in the desired pixel regions **59** using the thin-film transistor T_1 similarly to the first embodiment.

Since the conductive film **81** and the common electrodes **53** are allowed to be at substantially the same voltage, the lines of electric force in the regions corresponding to the common electrodes **53** are less disturbed so that the alignment disorder of the liquid crystal molecules can be decreased.

Therefore, as is similar to the liquid crystal display device of the first embodiment, the opening **70** of the light shielding matrix **71** can be enlarged, and the dark state and the bright state are switchable according to the liquid crystal alignment controlled by a transverse electric field, thereby providing a liquid crystal display device having a high aperture ratio and small dependency on the angle of view.

Furthermore, in the liquid crystal display device of the second embodiment, the conductive layer **81** can be positioned nearer to the liquid crystal molecules as compared with the light shielding matrix **71**. Thus, disturbance of the lines of electric force can be further reduced as compared with the first embodiment and the alignment disorder of the liquid crystal in the regions corresponding to the common electrodes **53** is further decreased.

When a shading metallic layer is employed as the conductive film **81** in the second embodiment shown in FIG. **5**, the light shielding matrix **71** may be omitted. In such a case, the shading metallic layer is also used as the light shielding matrix **71**.

With the light shielding matrix **71** formed on the substrate **40**, the disturbance of the lines of electric force applied to the region corresponding to the common electrodes **53** can be reduced even if the conductive film **81** is formed only on the periphery of the opening **70** of the light shielding matrix **71**. Thus, the conductive film **81** is not required to have completely the same pattern as the light shielding matrix **71**. From the viewpoint of designing, it is easiest to form the conductive film **81** and the light shielding matrix **71** with the same pattern, however, the object of the present invention can be achieved as long as the shape of the conductive film **81** corresponds to the periphery of the opening **70** of the light shielding matrix **71**.

EXAMPLE AND COMPARATIVE EXAMPLE

A thin-film-transistor-type liquid crystal display device having a structure shown in FIGS. **1** and **2** was produced as Example.

Two transparent glass substrates 1 mm thick were employed. A thin-film transistor circuit having the linear electrodes was formed on one substrate (first substrate). An alignment film was formed on the thin-film transistor circuit and another alignment film was provided on the other substrate (second substrate). For aligning liquid crystal, the alignment films were rubbed by a rubbing roll in parallel with the longitudinal direction of the linear electrodes. The first and second substrates were positioned opposing each other at a predetermined distance with gap-forming beads interposed therebetween. A liquid crystal was poured into the space formed between the substrates. The first and second substrates were joined to each other using a sealing

member and assembled into a liquid crystal cell by providing polarizing plates outside the substrates.

In more detail, this device was prepared as follows: The pitch of the pixel region was $43\ \mu\text{m}$ for the horizontal direction (signal-line direction) and $129\ \mu\text{m}$ for the vertical direction (gate-line direction); the light shielding matrix was made of Cr, $0.3\ \mu\text{m}$ thick, and had $27\ \mu\text{m}$ by $111\ \mu\text{m}$ openings each for a pixel region. The width of the pixel electrode and the common electrode was set to $5\ \mu\text{m}$, and the distance between the pixel electrode and the common electrode was set to $10\ \mu\text{m}$.

Thin-film transistors, in each of which a semiconductor film made of a-Si was formed between a gate electrode and a source electrode, were provided each near an intersection between the gate line and the signal line, and covered with an insulating film and a polyimide alignment film in that order. The alignment film was rubbed to complete a thin-film transistor array on the first substrate. The first substrate and the second substrate having a light shielding matrix, color filters, and a polyimide alignment film thereon were positioned opposing each other with a $4\text{-}\mu\text{m}$ gap therebetween. A liquid crystal was encapsulated between the substrates using a sealing member. Two terminals connecting to the portion of the light shielding matrix extended to the peripheral edge of the second substrate outside the sealing member and other two terminals connecting to the common electrodes were connected by an Ag paste so as to complete a liquid crystal display device. In this structure, the light shielding matrix and the common electrodes were grounded.

As Comparative Example, another liquid crystal display device was prepared in which the terminals connecting to the light shielding matrix and those connecting to the common electrodes were not connected such that the light shielding matrix was electrically floating and the common electrodes were grounded.

FIGS. 6A and 6B show the simulation results of the lines of electric force generated by the pixel electrodes and the common electrodes in the above-mentioned liquid crystal display devices FIG.

FIG. 6A shows the simulation results obtained from the liquid crystal display device of Example in which the light shielding matrix and the common electrodes are connected and grounded, and FIG. 6B shows the simulation results obtained from the liquid crystal display device of Comparative Example in which the light shielding matrix and the common electrodes are not connected, the light shielding matrix was floating, and the common electrodes were grounded.

In the lines of electric force shown in FIG. 6A, the rising section R of the lines of electric force is located outside the ends P of the region positioned between both common electrodes 53, however, in the lines of electric force shown in FIG. 6B, the rising section R' of the lines of electric force is located inside the ends P' of the region positioned between both common electrodes 53, which fact indicates that in a structure having the lines of electric force shown in FIG. 6B, light leakage may occur in the region between both common electrodes 53, however, in a structure having the lines of electric force shown in FIG. 6A, light leakage does not readily occur in the region between both common electrodes 53.

FIG. 7A is a photograph showing the result of a light-leakage occurrence test using a liquid crystal display device having the same structure as Example in which the light shielding matrix and the common electrodes are connected and grounded. The gate electrode voltage V_G at the time of

driving the liquid crystal display device was set to 15 V, and the common voltage and the light shielding-matrix voltage were set to 0 V, i.e., they were grounded. Light leakage does not occur in this structure, as is shown in FIG. 7A.

FIG. 7B is a photograph showing the result of a light-leakage occurrence test using a liquid crystal display device of Comparative Example in which the gate electrode voltage V_G is set to 15 V, the light shielding matrix is floating, and the common electrodes are grounded. As is shown in FIG. 7B, light leakage occurs in this structure.

From the result shown in FIG. 7B, it is understood that in the liquid crystal display device of Comparative Example in which the light shielding matrix is floating and the common electrodes are grounded, light leakage occurs if the light shielding matrix has the above-described shape. Thus, it is necessary to extend the area shaded by the light shielding matrix, undesirably resulting in a reduction in the aperture ratio.

FIGS. 8A and 8B show the transmittance-driving voltage characteristics of the liquid crystal display devices of Example and Comparative Example, respectively.

As is apparent from FIGS. 8A and 8B, the maximum transmittance of the liquid crystal display device of Example and that of the liquid crystal display device of Comparative Example are almost the same. The driving voltage required for obtaining the maximum transmittance is 6.7 V for the liquid crystal display device of Example and 7.9 V for the liquid crystal display device of Comparative Example. Thus, to achieve the same transmittance, the driving voltage of the liquid crystal display device of Example is lower than that of the liquid crystal display device of Comparative Example. As a result, the driving voltage can be reduced by 1.2 V by employing the liquid crystal display device of Example.

FIG. 15 shows the relationship between the reduction in the transmittance and the voltage difference between the light shielding matrix and the common electrodes in the liquid crystal display device of Example. In FIG. 15, the transmittance obtained by setting the light shielding matrix and the common electrodes to the same voltage is defined as 100% transmittance.

As is apparent from FIG. 15, the reduction in the transmittance is more than 5% when the voltage difference between the light shielding matrix and the common electrodes exceeds 0.5 V. Therefore, to obtain a sufficient voltage difference, it is effective to set the voltage difference between the light shielding matrix and the common electrodes in a range of from +0.5 V to -0.5 V, both inclusive.

FIGS. 16 to 18 show other examples in which the conductive films 81 at substantially the same voltage as the common electrodes are partially provided above the light shielding matrix 71.

According to the structure shown in FIG. 16, the strip-shaped conductive films 81 are provided in the horizontal direction such that they sandwich the top and bottom sides of the openings 70, each opening corresponding to a pixel region. In the structure shown in FIG. 17, the strip-shaped conductive films 81 are provided in the vertical direction such that they sandwich the right and left sides of the openings 70, each opening corresponding to a pixel region. In the structure shown in FIG. 18, the strip-shaped conductive films 81 are provided in both the horizontal direction and the vertical direction such that they sandwich the entire right and left sides and approximately a half of the top and bottom sides of the openings 70, each opening corresponding to a pixel region.

In the above structures of FIGS. 16 to 18, similar effects to those obtained in the structure which is described above with reference to FIG. 5 can be obtained.

As is mentioned above, according to the present invention, a light shielding matrix and common electrodes are set to substantially the same voltage in a liquid crystal display device in which liquid crystal alignment is controlled by applying a transverse electric field in a direction parallel to the substrate using the common electrodes and pixel electrodes. Disturbance of the lines of electric force applied to the liquid crystal in regions corresponding to the common electrodes can be thereby reduced and the liquid crystal in those regions can be used for displaying. Thus, it becomes unnecessary to shade the regions corresponding to the common electrodes by the light shielding matrix, a fact which allows the light shielding matrix to have wider openings as compared with conventional cases. The resulting liquid crystal display device achieves higher aperture ratio as compared with those having conventional structures in which the light shielding matrix is electrically floating.

Therefore, a liquid crystal display device having a high aperture ratio and a wider angle of view can be provided, in which the dark and bright states are switched according to the liquid-crystal alignment which is controlled by the application of a transverse electric field.

Furthermore, since the aperture ratio can be improved by enlarging the openings of the light shielding matrix by reducing the alignment disorder of the liquid crystal in regions corresponding to the common electrodes, the driving voltage required to obtain the maximum transmittance can be decreased, which fact means that the liquid crystal display device can be driven using less electric power.

The above structure can also be applied to a structure in which a conductive film having the same shape as that of the light shielding matrix is formed on the light shielding matrix with an insulating film therebetween. In such a case, similar effects to the above structure can be obtained by connecting the conductive film and the common electrode to substantially the same voltage. "Substantially the same voltage" means that the voltage difference between the conductive film and the common electrodes is set in a range of from -0.5 V to $+0.5$ V, both inclusive. When the voltage difference is in the above range, the above effects can be ensured.

For reliably setting the common electrodes and the light shielding matrix or the conductive film to substantially the same voltage, connecting terminals of the common electrodes and the light shielding matrix or the conductive film may be extended to the peripheral edges of the substrates, on which the common electrodes and the light shielding matrix or the conductive film are formed, and be connected to each other by a conductive member such as a conductive paste.

In addition, for reliably setting the common electrodes and the light shielding matrix or the conductive film to substantially the same voltage, the common electrodes and the light shielding matrix or the conductive film may be partially extended outside the sealing member, encapsulating liquid crystal between the substrates, so as to be connected to each other by a conductive member such as a conductive paste.

What is claimed is:

1. A liquid crystal display device comprising:

a first substrate and a second substrate;

a liquid crystal layer provided between said first and second substrates;

a plurality of pixel regions provided on the surface opposing said second substrate of said first substrate, each of said pixel regions comprising at least one pixel electrode and a common electrode cooperatively applying an electric field in a direction along the surface of said first substrate; and

a conductive light shielding matrix provided on the surface opposing said first substrate of said second substrate, the entire light shielding matrix having the same conductivity, said light shielding matrix having openings, each corresponding to a display region of each of said pixel regions, and shading non-display regions other than said pixel regions;

wherein a conductive film at substantially the same voltage as said common electrode is formed at least above said light shielding matrix with an insulating film interposed therebetween.

2. The liquid crystal display device as set forth in claim 1, wherein the voltage difference between said conductive film and said common electrode is set in a range of from -0.5 V to $+0.5$ V both inclusive.

3. The liquid crystal display device according to claim 1, wherein the common electrode and the pixel electrode are on different layers.

4. The liquid crystal display device according to claim 1, wherein the light shielding matrix includes chromium.

5. The liquid crystal display device according to claim 1, wherein the light shielding matrix includes chromium and chromium oxide.

6. The liquid crystal display device according to claim 1, wherein the light shielding matrix includes chromium oxide.

7. The liquid crystal display device according to claim 1, wherein the conductive film has an opening substantially the same size as the opening in the light shielding matrix.

8. The liquid crystal display device according to claim 1, wherein the conductive film includes a transparent layer.

9. The liquid crystal display device according to claim 1, wherein the conductive film includes an opaque layer.

10. The liquid crystal display device according to claim 1, wherein the conductive film is in a horizontal direction.

11. The liquid crystal display device according to claim 1, wherein the conductive film is in a vertical direction.

12. The liquid crystal display device according to claim 1, wherein the conductive film has a first portion in a first direction and a second portion in a second direction is in a horizontal direction.

13. A liquid crystal display device, comprising:

a first substrate and a second substrate;

a liquid crystal layer provided between said first and second substrates;

a plurality of pixel regions provided on the surface opposing said second substrate of said first substrate, each of said pixel regions comprising at least one pixel electrode and a common electrode cooperatively applying an electric field in a direction along the surface of said first substrate; and

a conductive light shielding matrix provided on the surface opposing said first substrate of said second substrate, the entire light shielding matrix having the same conductivity, said light shielding matrix having openings, each corresponding to a display region of each of said pixel regions, and shading non-display regions other than said pixel regions;

wherein said light shielding matrix and said common electrode are set to substantially the same voltage and wherein the light shielding matrix includes chromium and chromium oxide.

14. A liquid crystal display device, comprising:

a first substrate and a second substrate;

a liquid crystal layer provided between said first and second substrates;

a plurality of pixel regions provided on the surface opposing said second substrate of said first substrate, each of said pixel regions comprising at least one pixel

15

electrode and a common electrode cooperatively applying an electric field in a direction along the surface of said first substrate; and

a conductive light shielding matrix provided on the surface opposing said first substrate of said second substrate, the entire light shielding matrix having the same conductivity, said light shielding matrix having openings, each corresponding to a display region of

16

each of said pixel regions, and shading non-display regions other than said pixel regions; wherein said light shielding matrix and said common electrode are set to substantially the same voltage and wherein the light shielding matrix includes chromium oxide.

* * * * *

专利名称(译)	具有遮光基质的液晶显示装置		
公开(公告)号	US6587170	公开(公告)日	2003-07-01
申请号	US09/854504	申请日	2001-05-15
[标]申请(专利权)人(译)	SHIN HYUNHO SUNG CHAE GEE TAKASHINA口技		
申请(专利权)人(译)	SHIN HYUNHO SUNG CHAE GEE TAKASHINA口技		
当前申请(专利权)人(译)	LG.飞利浦液晶CO. , LTD.		
[标]发明人	SHIN HYUNHO SUNG CHAE GEE TAKASHINA KOUJI		
发明人	SHIN, HYUNHO SUNG, CHAE GEE TAKASHINA, KOUJI		
IPC分类号	G02F1/13 G02F1/1343 G02F1/1335 G02F1/133 G09F9/30 G02F11/1336		
CPC分类号	G02F1/133512 G02F1/134363		
优先权	1997010691 1997-01-23 JP		
其他公开文献	US20020003597A1		
外部链接	Espacenet USPTO		

摘要(译)

一种液晶显示装置，包括：第一基板和第二基板；液晶层设置在第一和第二基板之间；多个像素区域设置在与第一基板的第二基板相对的表面，每个像素区域具有至少一个像素电极和公共电极，用于在沿着第一基板的表面的方向上协作地施加电场；导光遮光矩阵设置在与第二基板的第一基板相对的表面，该遮光矩阵具有开口，每个开口对应于每个像素区域的显示区域，并遮蔽除了像素区域以外的非显示区域；其中光屏蔽矩阵和公共电极设置为基本相同的电压。

